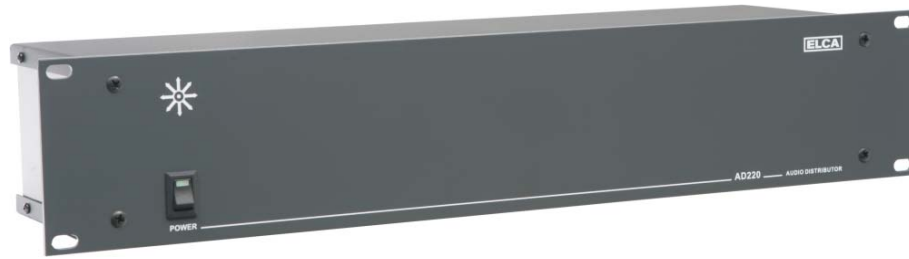


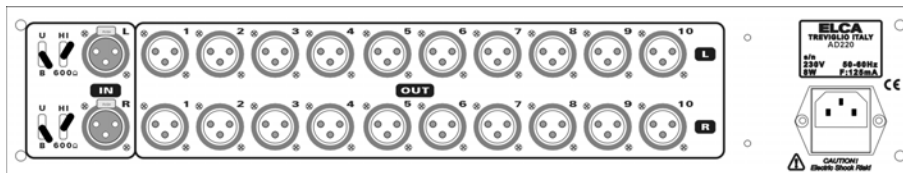
AD220 DISTRIBUTION AMPLIFIER



FRONT PANEL

1 IN - 10 OUT BALANCED STEREO AUDIO

CARATTERISTICHE GENERALI	GENERAL FEATURES
<ul style="list-style-type: none"> ▪ 1 ingresso audio stereo, bilanciato o sbilanciato ▪ 10 uscite audio stereo, bilanciate o sbilanciate 	<ul style="list-style-type: none"> ▪ 1 balanced or unbalanced, stereo audio input ▪ 10 balanced or unbalanced, stereo audio outputs



REAR PANEL

ANALOG STEREO AUDIO INPUTS	ANALOG STEREO AUDIO OUTPUTS
<ul style="list-style-type: none"> - Number of inputs: 1 (1L + 1R) - Connectors: XLR 3 pins female - Signal type: balanced (B) or unbalanced (U) selectable - Signal max. level: +18 dB - Impedance: 10 KΩ or 600 Ω selectable - CMRR: -72 dB, 10 kHz 	<ul style="list-style-type: none"> - Number of outputs: 10 (10L + 10R) - Connectors: XLR 3 pins male - Signal type: balanced (B) or unbalanced (U) - Impedance: 40 Ω - Signal max. level: +18 dB into 600 Ω - Gain: Unity - Frequency response: 120 kHz, -3 dB - Flatness: 10 Hz to 100 kHz, ± 0.5 dB - Distortion (THD): 0.008% 20 Hz – 20 kHz <li style="padding-left: 20px;">8 Vrms, 600 Ω - Signal to noise ratio: -88 dB unweighted

POWER SUPPLY	MECHANICAL SPECIFICATIONS
AC 230V 50/60 Hz – 8 W (AC 117V on request)	<ul style="list-style-type: none"> - Dimensions: 19" 2RU; W. 48,3; H. 8,8; D. 12,3 cm. - Weight: 2,4 kg. approximately

GARANZIA	WARRANTY
Tre anni, parti di ricambio e manodopera. (V. termini di "Garanzia" su Condizioni Generali di Vendita)	<i>Three years, parts and labour.</i> (See "Warranty" terms on General Conditions of Sales)

CODICE D'ORDINE	ORDERING CODE
AD220 Versione standard	Standard version

