

Panasonic

ClipCopy Application Ver 2.5

AJ-SF771A_P

Reference Manual

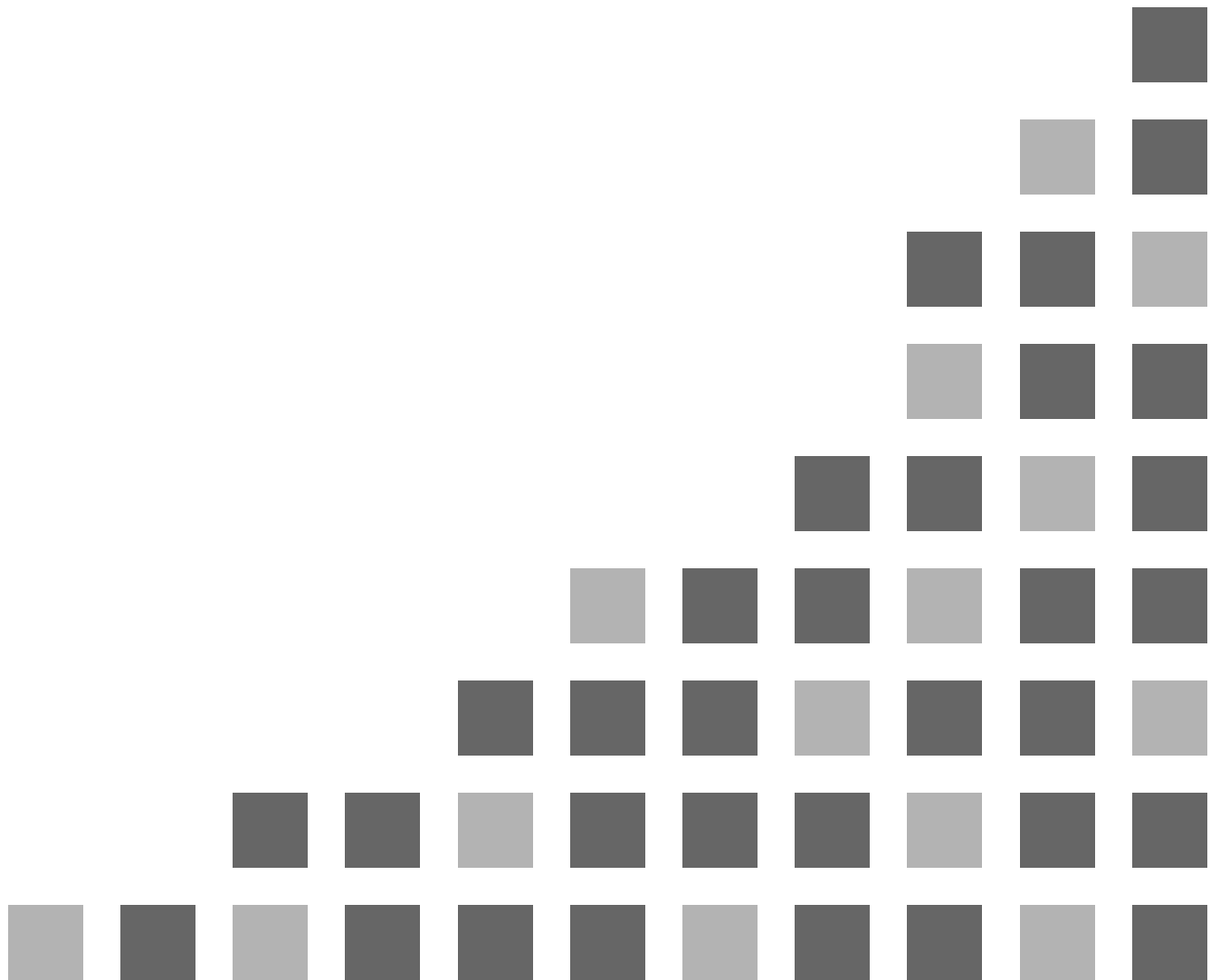


TABLE OF CONTENTS

Concerning this manual	4
1. INTRODUCTION	5
1.1 Foreword	5
1.2 ClipCopy Application	5
1.3 Restrictions on Use	5
1.4 Screen Configuration	7
2. SYSTEM CONFIGURATION	8
3. INSTALLING THE CLIPCOPY APPLICATION	9
3.1 Prior to Installation	9
3.2 Installing the ClipCopy Application	9
3.3 Installing the newsBYTE/QuickCutter application	12
3.4 Registering the user in the video servers	12
4. STARTING UP CLIPCOPY	13
5. MEDIA BROWSING	15
5.1 Clip browsing	15
5.2 File browsing	17
5.2.1 Server setting	17
5.2.2 File browsing	20

TABLE OF CONTENTS

6. EXPORTING CLIP DATA22
6.1 Exporting Clip22
6.2 Direct Exporting from newsBYTE/QuickCutter BINs23
7. IMPORTING CLIP DATA24
8. OPTION SETTING26
8.1 Server Options26
8.2 Other Options30
9. CLIPCOPY MENUS32
10. CLIPCOPY TOOLBAR34
10.1 News Automation Mode34
10.2 Other34
11. CONCERNING THE USE OF THE BACKUP SERVER35
Appendix.1 Troubleshooting36
Appendix.2 How to check the WindowsNT network software44

Windows and WindowsNT are the trademarks or the registered trademarks of Microsoft Corporation in United States and all other nations.

Concerning this manual

Thank you for purchasing Panasonic's ClipCopy. This Panasonic ClipCopy Reference Manual explains how the ClipCopy application is used.

**This reference manual only intends to give detailed information of ClipCopy Ver.2.5.
The functions and restrictions described in this manual may change without notice.**

1. INTRODUCTION

1.1 Foreword

The Panasonic newsBYTE/QuickCutter, the world's first all-in-one type of nonlinear editing system with a build-in 4X speed VTR, has received high critical praise from the broadcasting and commercial sectors for its architecture and editing functions. As digital technology continues to make rapid advances, the demand for developing the kind of systems which integrate on-air servers, archives and News Automation has escalated. It was to meet this demand that Panasonic developed this application software program to enable newsBYTE/QuickCutter system expansion.

With this software program, it is now possible to provide a solution which is ideally suited to archive systems and station automation systems based on new concepts and to which the component networks that have now become established as part of the infrastructure are applied.

1.2 ClipCopy Application

The ClipCopy application is an add-on software program which runs in Panasonic's AJ-DE77 (newsBYTE/QuickCutter) nonlinear editing system.

Use of ClipCopy opens the door to importing DVCPRO format data existing in the video servers, etc. to newsBYTE/QuickCutter to be used as AV clips for editing and, conversely, to exporting to the video servers the DVCPRO format data files that correspond to the AV clips and already edited sequence clips in newsBYTE/QuickCutter.

One special feature is that operations can be linked with a News Automation system (See Note 1 below.) when exporting clips and files.

1.3 Restrictions On Use

Restriction on transferring clips

As defined by ClipCopy, clips can be transferred in the following ways:

- Transfer from BIN to the video server (=export)
- Transfer from BIN to a local drive (=export)
- Transfer from the video server to BIN (=import)
- Transfer from a local drive to BIN (=import)

No other form of transfer (such as from one BIN to another BIN or from a video server to a local drive) is possible.

Note 1: The News Automation system must be provided separately as it is not included with this application.

1. INTRODUCTION

Restrictions on names for BINs and clips

The following restrictions apply to the naming of BINs and clips.

- The following characters can not be used in names: ¥ (yen sign), / (slash), : (colon), , (comma), ; (semicolon), * (asterisk), ? (question mark), “ ” (quotation mark), < (less than), > (greater than), ‘ ’ (space) and | (vertical bar).
- A “.” (period) can not be used at the beginning of a name.
- When full-size characters are used for a name, some name may not be displayed correctly although this depends on the character string.
- Do not use the same name for BINs at the same hierarchical level.

Restrictions on processing during transfer

As a general rule, operations involving the keyboard or mouse must not be performed while clips are being transferred by ClipCopy. Rather, they should be performed either upon completion of transfer or after transfer has been aborted.

Restrictions on deleting clips

ClipCopy can be used to delete clips (files) on the video server or local drive but it cannot delete clips on BINs. To delete such clips, use the newsBYTE/QuickCutter main unit application.

1. INTRODUCTION

1.4 Screen Configuration

As shown in Fig. 1-1, the main window of ClipCopy is composed of the Menu Bar, Tool Bar, Volume View, List View and Status Bar.

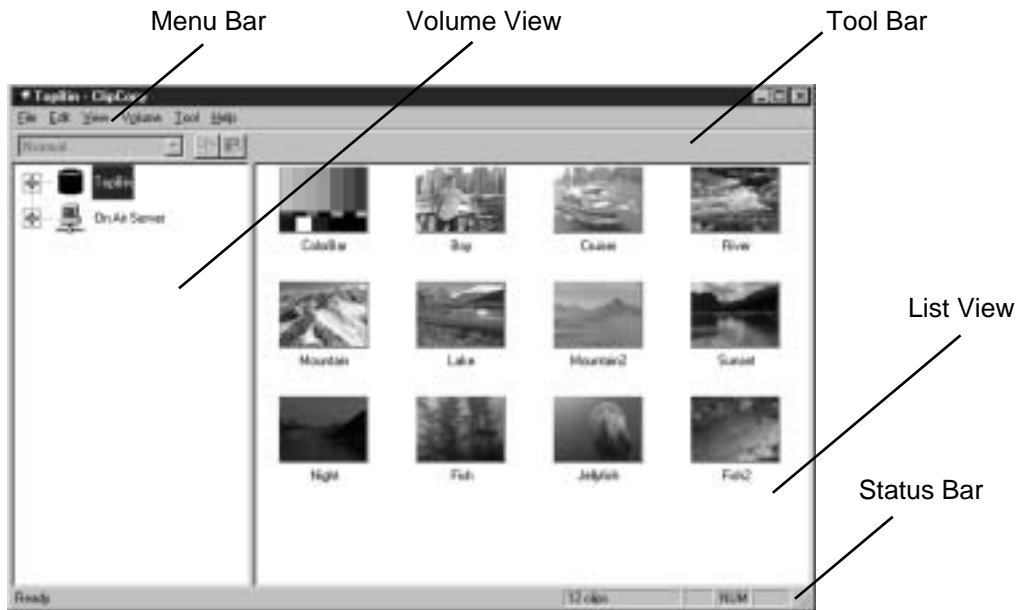


Fig. 1-1

Menu Bar

This bar contains the menus which are used by ClipCopy. It consists of the [File] menu, [Edit] menu, [View] menu, [Volume] menu, [Tools] menu and [Help] menu.

Tool Bar

This consists of the News Automation Mode which selects the News Automation usage mode and the Copy and Paste buttons for copying and pasting files and clips.

Volume View

This displays the volumes, namely, the BINs, mounted video servers and local disks.

List View

This displays the clips and files in the volume selected by Volume View.

Status Bar

This displays the ClipCopy statuses.

2. SYSTEM CONFIGURATION

Fig. 2-1 shows an example of the ClipCopy application's operating environment.

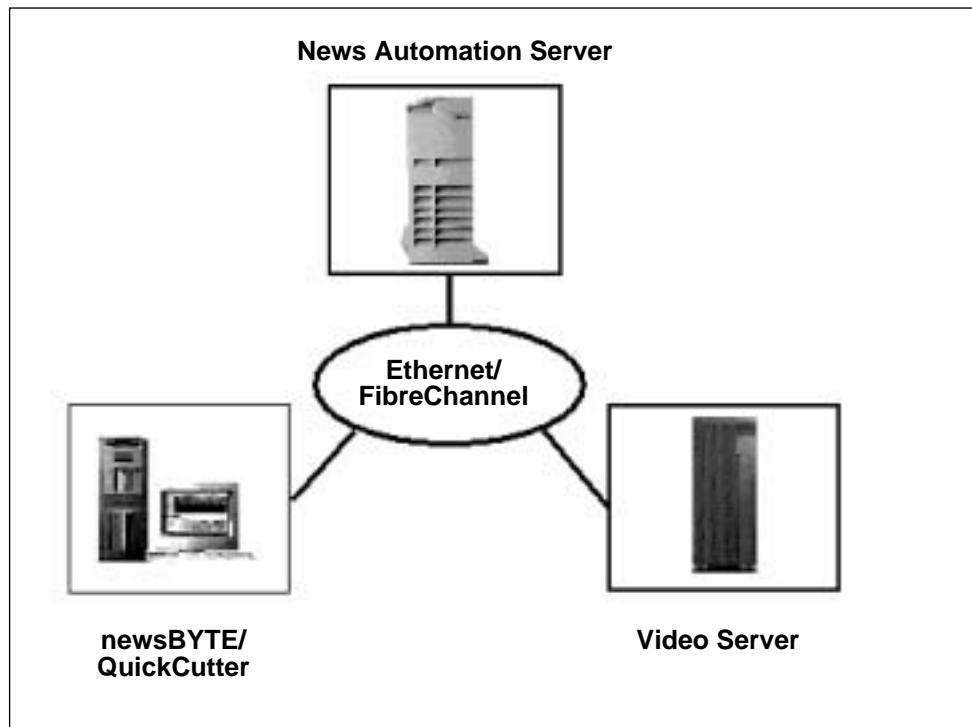


Fig. 2-1

3. INSTALLING THE CLIPCOPY APPLICATION

3.1 Prior to Installation

In order to use the ClipCopy application to transfer newsBYTE/QuickCutter AV data to and from the video server, the following conditions must be satisfied by the system environment in which the ClipCopy application is to be installed.

1. The appropriate network card and its driver software must have been installed, and they must be operating properly. (See Note 2 below.)
2. The WindowsNT network software (protocol, services) must have been installed appropriately, and they must be operating properly. (See Appendix.2 for details on how to check the WindowsNT network software.)
3. The newsBYTE/QuickCutter application must have been installed appropriately.
4. The user registration must have been completed with the video server, and it must be possible to confirm the connection from newsBYTE/QuickCutter.

3.2 Installing the ClipCopy application

After checking that the conditions which must be met as described in section 3.1 prior to installation have indeed been met, follow the steps below to install the ClipCopy application into newsBYTE/QuickCutter.

1. Exit all applications, and run "setup.exe" located on the ClipCopy setup disk. The setup shown in Fig. 3-1 is now commenced.



Fig. 3-1

Note 2: Queries concerning which network cards are recommended and other details should be addressed to your dealer.

3. INSTALLING THE CLIPCOPY APPLICATION

2. The dialog window shown in Fig. 3-2 will now appear. Click on the [Next] button.



Fig. 3-2

3. The dialog window shown in Fig. 3-3 will now appear. Select NTSC or PAL as the signal type, and click on the [Next] button.



Fig. 3-3

Note 3: The News Automation system software must be integrated separately.

3. INSTALLING THE CLIPCOPY APPLICATION

4. The dialog window shown in Fig. 3-4 will now appear. Use the [Yes] or [No] radio button to select whether operations linked with the News Automation system (See Note 3 below.) are to be supported, and click on the [Next] button.

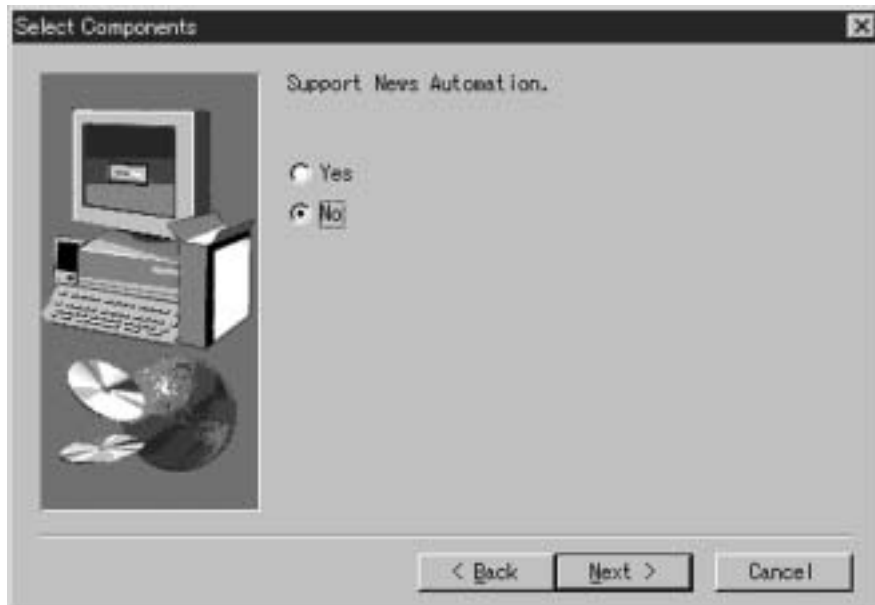


Fig. 3-4

5. The message box shown in Fig. 3-5 indicating that installation has been completed will now appear. Exit the installation procedure, and restart WindowsNT.

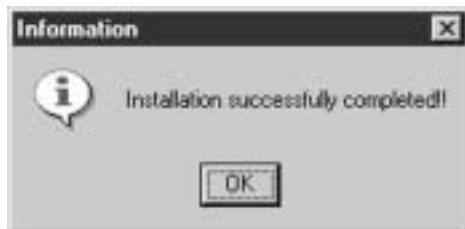


Fig. 3-5

3. INSTALLING THE CLIPCOPY APPLICATION

3.3 Installing the newsBYTE/QuickCutter application

Follow the instructions in the newsBYTE/QuickCutter manual to install the newsBYTE/QuickCutter application software program.

3.4 Registering the user in the video servers

The ClipCopy application performs FTP transfer between newsBYTE/QuickCutter and the video servers. For this reason, it is necessary for a user account (See Note 4 below.) to be established in the video servers.

Refer to the video server's manual, and proceed with user registration. When a multiple number of video servers are to be handled by the ClipCopy application, user registration is required for each video server.

Note 4: Set the user account using the same user name and password which are set on the option setting panel (Server Property tab) of the ClipCopy application.

4. STARTING UP CLIPCOPY

The ClipCopy application operates in tandem with the newsBYTE /QuickCutter application. This means that the newsBYTE/QuickCutter application must be launched before the ClipCopy application is launched. This section describes how the ClipCopy application is started by the following steps.

1. Start the newsBYTE/QuickCutter application by following the instructions in the newsBYTE/QuickCutter application manual.
2. The newsBYTE/QuickCutter application window shown in Fig. 4-1 will now appear. Double click on the Special button located in the Toolbox.



Fig. 4-1

4. STARTING UP CLIPCOPY



Fig. 4-2

3. The Setup Panel window will now appear as shown in Fig. 4-2. Double click on the ClipCopy icon. The ClipCopy application is now launched, and the window shown in Fig. 4-3 will appear.

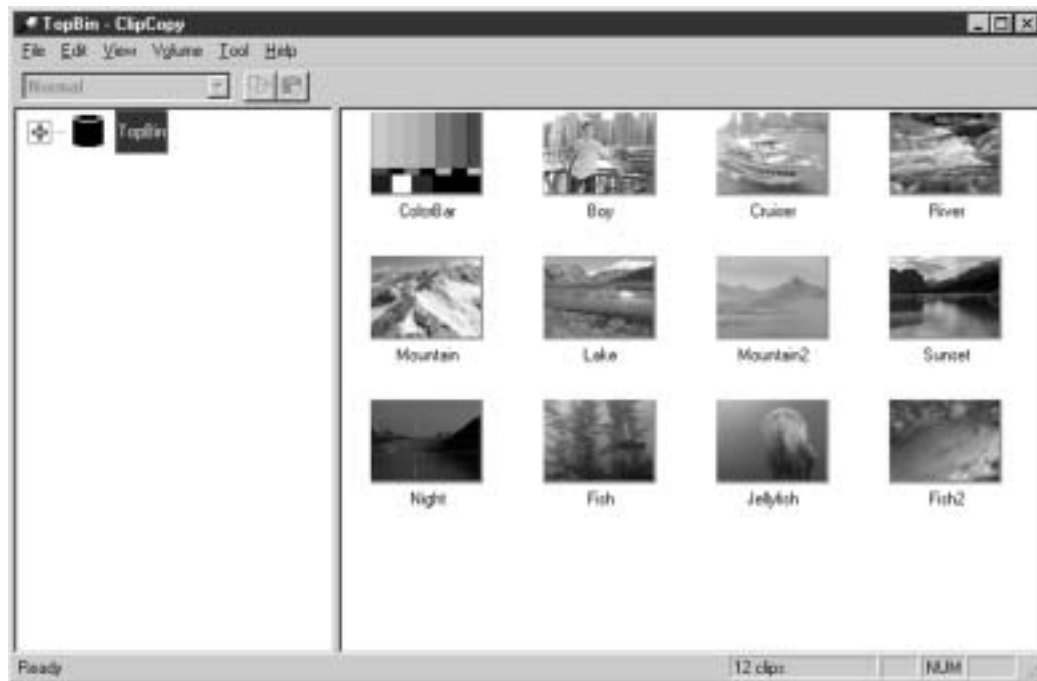


Fig. 4-3

5. MEDIA BROWSING

5.1 Clip browsing

When the clips registered in newsBYTE/QuickCutter are to be browsed, click on the TopBin icon (See Fig. 5-1.) which is displayed on volume view.



Fig. 5-1

The clips which are present in TopBin are displayed on list view of ClipCopy as (See Note 5 below.) shown in Fig. 5-2. (See Note 6 below.)

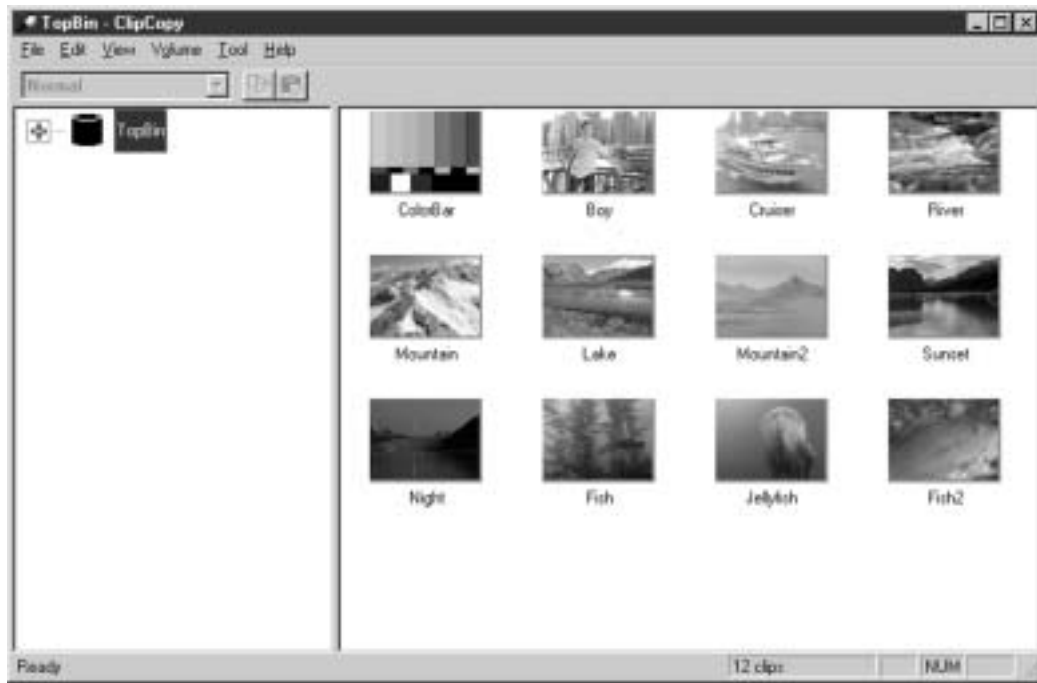


Fig. 5-2

The BIN manager of the newsBYTE/QuickCutter application makes it possible to register BINs in TopBin and other BINs in accordance with the hierarchical structure called the BINTree.

To browse through the BINs in the BINTree, click on the "+" symbol (See Fig. 5-3.) to the left of the TopBin icon displayed on volume view to display the BINs (See Fig. 5-5.) to be browsed in volume view. Then click on the BIN icon which is now displayed.

On list view, the volume view BIN changes to an icon such as the one shown in Fig. 5-6.

Note 5: Only AV clips and sequence clips are displayed. No other kinds of clips are shown.

Note 6: The TopBin clip list is displayed also when the ClipCopy application is started up.

5. MEDIA BROWSING

On volume view, by clicking on the “+” symbol to the left of the TopBin icon displayed as described above, it is possible to display the BIN hierarchically below TopBin. However, this can also be accomplished by double clicking on the TopBin icon.

At the same time as the BIN hierarchically below TopBin is displayed on volume view, its “+” symbol is changed to a “-” symbol as shown in Fig. 5-4.



Fig. 5-3



Fig. 5-4



Fig. 5-5



Fig. 5-6

An example of browsing the BIN clips is shown in Fig. 5-7.
(See Note 7 below.)



Fig. 5-7

Note 7: The “+” symbol appears for each of the BINs. However, if there are no BINs which are hierarchically lower, it is cleared by either clicking the symbol or double clicking the BIN icon.

5. MEDIA BROWSING

5.2 File browsing

5.2.1 Server setting

Files on a video server can be browsed using ClipCopy. However, when ClipCopy starts up for the first time, the server icon does not appear on Volume View since no video server has yet been mounted.

The procedure for mounting the video server is described here first. Follow the steps below to mount the server.

1. Select the [Options...] menu item on the [File] menu as shown in Fig.5-8.



Fig. 5-8

2. The dialog window shown in Fig. 5-9 will now appear. Click the [Add] button.



Fig. 5-9

<Note>

NewsAutomation Tab in Fig.5-9 is displayed only if you define "Yes" button with "Support NewsAutomation dialog" at the set up program.

5. MEDIA BROWSING

3. The dialog window shown in Fig. 5-10 will now appear. Enter the desired group name in the [Group Name] box. (See Note 8 below.)
4. Enter the name of the video server to be used in the [Server] box.
5. Enter the user ID which is valid for video server and the password in the [User ID] box and [Password] box, respectively.
6. Enter the name of the directory in which the server is to be mounted in the [DIF File Directory] box.
7. Click the [Auto Mount] check box to enable this setting.
8. Click the [Details...] button.



Fig. 5-10

Note 8: The group name is displayed as the name of the server icon on volume view.

5. MEDIA BROWSING

9. The dialog box shown in Fig. 5-11 appears. The detailed settings of the video server can be performed here.



Fig.5-11

An example of the setting was shown in Fig. 5-12 and Fig. 5-13. (See note 9 below.)



Fig. 5-12



Fig. 5-13

Note 9: For details on the settings, refer to “Optional settings” in Chapter 8. Address any questions concerning server settings to your dealer.

5. MEDIA BROWSING

10. Click on the [OK] button.

When the steps outlined above are performed, the video server icon shown in Fig. 5-14 is displayed.



Fig. 5-14

However, when the video server cannot be mounted because the wrong password was set or there is a network problem, the icon shown in Fig. 5-15 appears, and details of the error displayed. In this case, check out the settings again.



Fig. 5-15

5.2.2 File browsing

After mounting the video server, the list of files in the video server's mount directory appears on list view, as shown in Fig. 5-16, by clicking the video server icon in volume view. In this context, "mount directory" refers to the DIF File Directory which was specified by Server Setup.

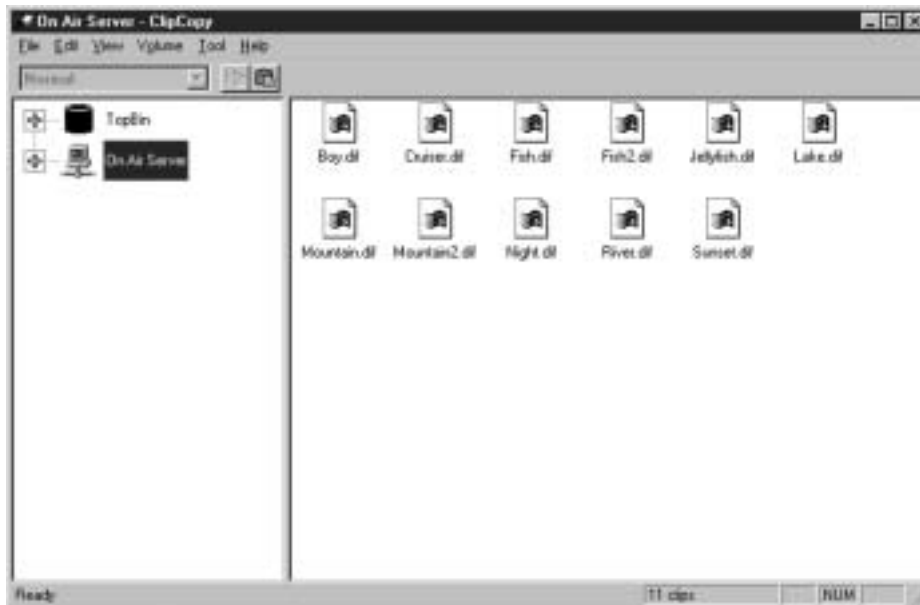


Fig. 5-16

Note 10: The list of files contained in the video server's mount directory is shown in list view by file icons.

5. MEDIA BROWSING

The video server's mount directory has a hierarchical structure, and how to browse the files in the directories which are hierarchically lower is described next.

When the mount directory does have a hierarchical structure, a "+" symbol such as the one shown in Fig. 5-17 will appear to the left of the mount directory icon on volume view. When this symbol is clicked, the directory hierarchically below the mount directory is displayed by the icon shown in Fig. 5-19 and, at the same time, its "+" symbol is changed to a "-" symbol as shown in Fig. 5-18.



Fig. 5-17



Fig. 5-18



Fig. 5-19



Fig. 5-20

When the icon of the desired directory is clicked, the clips in that directory are displayed on list view, and the icon of the directory changes to the type of icon shown in Fig. 5-20 to indicate that the directory has now been opened.

Fig. 5-21 shows an example of how the mount directory of the video server is displayed.

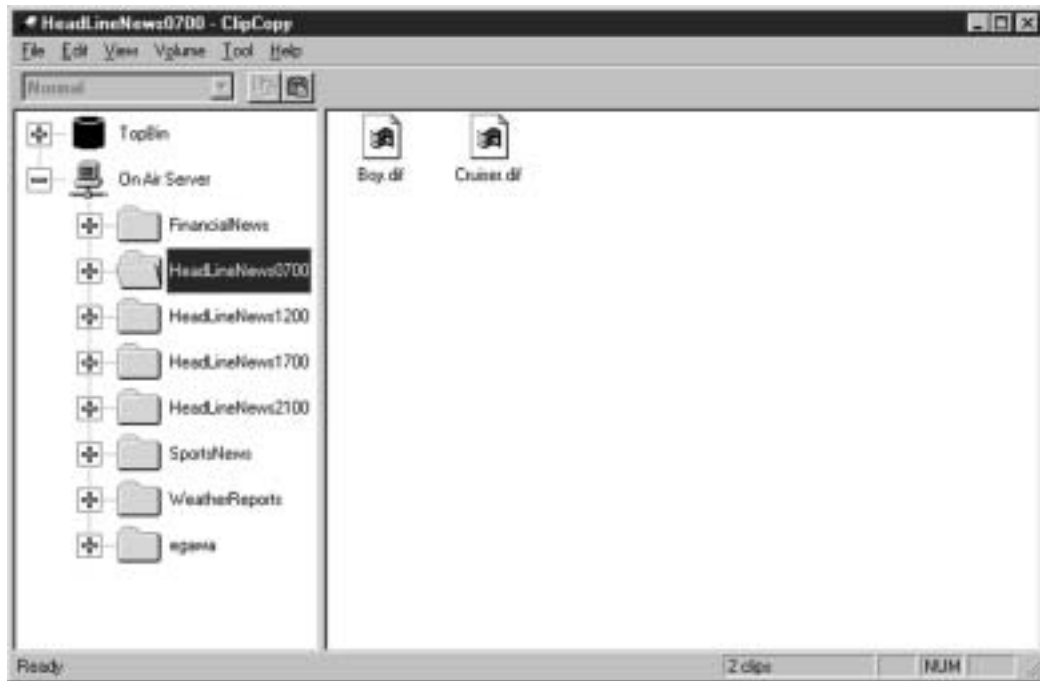


Fig. 5-21

6. EXPORTING CLIP DATA

Using ClipCopy, the clips registered in the BIN in newsBYTE/QuickCutter can be exported to the video server.

The types of clips which can be exported as defined below.

- A) AV Clip
- B) Sequence Clip

6.1 Exporting Clip

When clip is exported, Audio and Video data is formatted with SMPTE314M (DVCPRO) or SMPTE360M (GXF) format then transferred as a file and recorded on the video server.

The base name of each file (filename minus extension) is the same as the clip name.

By following the steps below, clip data can be exported.

1. Click on the TopBin icon or the icon of the BIN hierarchically below on Volume View to display the clips on List View.
2. Use the mouse to drag the desired clip on List View.
3. Drop the dragged clip onto the server icon on Volume View.

This operation is pictured in Fig. 6-1.

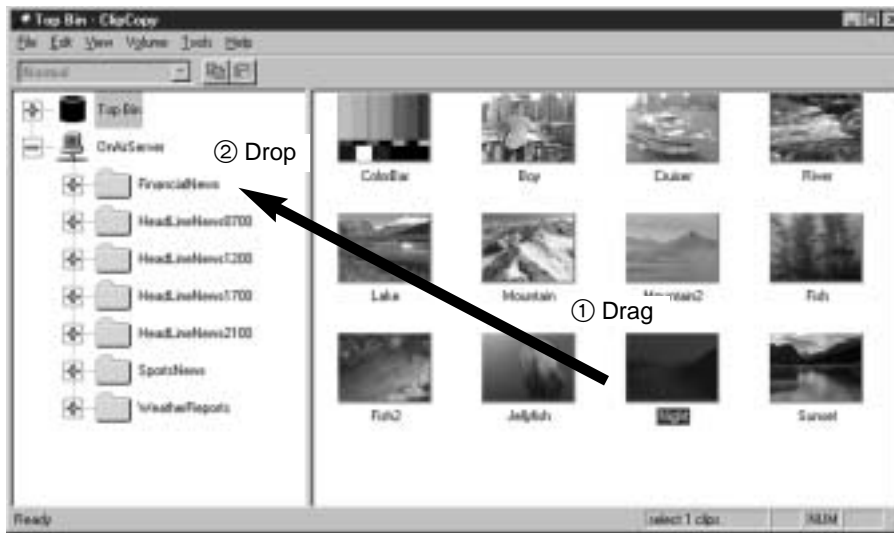


Fig. 6-1

When clip has been exported, file is created on the video server using the name of the clip in the BINs. (See note 11 below.)

Also, along with exporting sequence clip, rendering begins prior to transfer.

Note11: By installing a separate automation software program and performing the appropriate settings, operation can be linked with the automation server, and names of files created on the server can be acquired, changed, etc. For details on the integration and detailed specifications of the automation system, consult your dealer.

6. EXPORTING CLIP DATA

6.2 Direct Exporting from newsBYTE/QuickCutter BINs

To export a clip, the clip icon displayed in the BIN at the newsBYTE/QuickCutter end can be dragged onto the server icon of the ClipCopy application rather than dragging the clip icon displayed in List View. This operation is pictured in Fig. 6-2.

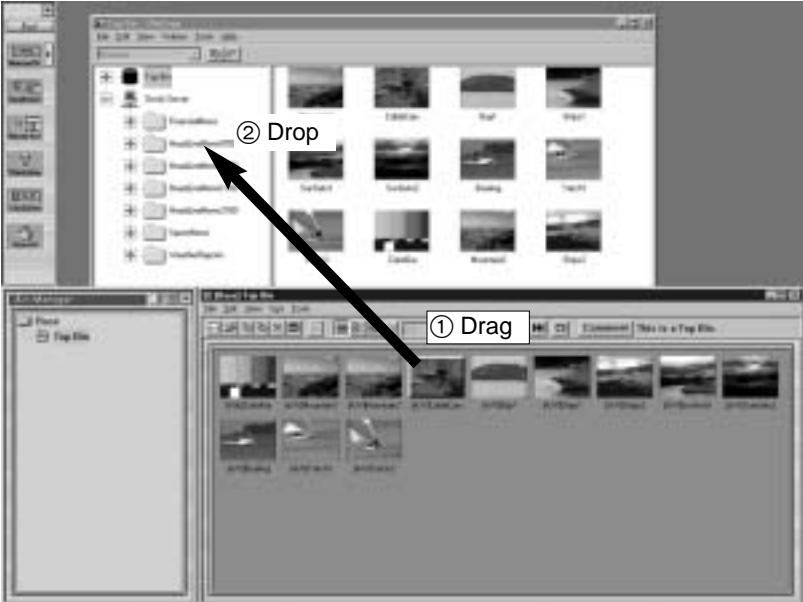


Fig. 6-2

7. IMPORTING CLIP DATA

Use of ClipCopy makes it possible to import the DVCPRO/GXF format files recorded on the video server into the desired BIN of newsBYTE/QuickCutter and record them as AV clips.

The procedure for importing files recorded on the video server is given below.

1. Click the server icon on volume view of ClipCopy or the desired directory of the server, and display the server's files in list view.
2. Select a file icon displayed in list view, and drag it.
3. Drop the dragged file icon onto the TopBIN icon or bottom level BIN icon of volume view.

This operation is pictured in Fig. 7-1.

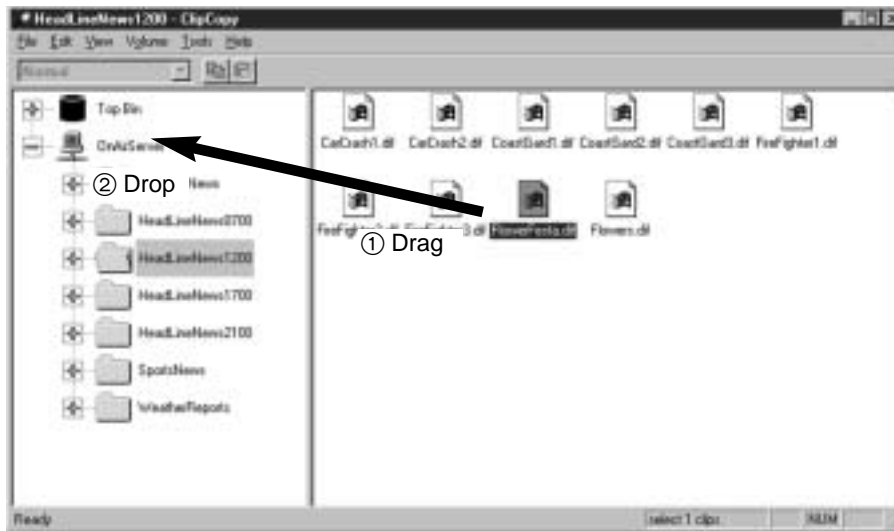


Fig. 7-1

The subclipping function for importing a part of a file recorded on the video server will now be described.

As a fundamental rule, data is imported using FTP on a file by file basis, so that when editing data using a part of an A/V file recorded continuously by the video server, it has been necessary to import (transfer) the entire file, but made it impossible to edit the data efficiently.

When "Enable Sub-Clip Mode" is selected in the Server Setup of ClipCopy, a dialog box (see Fig. 7-2) prompting the user to specify the necessary part of a file by the timecodes when the file is to be imported from the video server, thereby enabling a part of a file to be imported. (See note12 below.)

Note12: It may not be possible to use the subclipping function with some video servers. For details on the types of video servers that enable this function to be used and their detailed settings, consult your dealer.

7. IMPORTING CLIP DATA

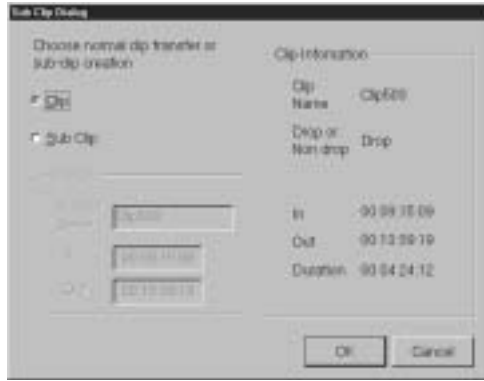


Fig. 7-2

The information concerning the file on the video server which is to be imported appears in the group box (top right of the dialog box) marked "Clip Information". The "Subclip" radio button will be selected, a part of a file can be specified by the start and end timecodes in the edit box. The edit box, which specifies the In and Out timecodes, is found in the group box (bottom left of the dialog box) marked "Subclip." If necessary, the name of the file to be imported can be changed.

Fig. 7-3 shows an example where a file is designated using the subclip dialog box.

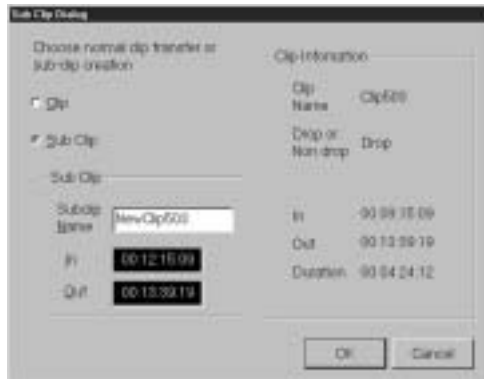


Fig. 7-3

8. OPTION SETTINGS

This section gives a detailed description of the ClipCopy options and explains how to proceed with the settings for the video server to be mounted and News Automation. (See note 13 below) The options dialog window shown in Fig.8-1 is displayed from the [Options...] menu item on the [File] menu.



Fig. 8-1

8.1 Server Options

The information on the video server to be mounted is set with server options. The "Group" refers to both the main server and backup server collectively, and one group name is given to both. To establish this setting, select the [Server Property] tab. Press the [Add] button to create a new server group. To edit an existing server group, select the server group concerned from the Server Group List, and press the [Edit] button.

To delete an existing server group, select the server group concerned from the Server Group List, and press the [Delete] button.

When a new server group is to be created or an existing server group is to be edited, the dialog window shown in Fig. 8-2 will appear.

Note13: The NewsAutomation tab appears when News Automation has been set to "Enable" when ClipCopy was installed. A separate automation software program is required to use News Automation. For details on the integration and detailed specifications of the automation system, consult your dealer.

8. OPTION SETTINGS



Fig. 8-2

[Group Name]

The group name is entered here. It represents the video server when media browsing or transfer is performed.

[Use Backup Server]

Check this to use the backup server. The individual settings as those for the main server must be performed in order for the backup server to be used.

[Main], [Backup]

Different settings can be provided for the main server and backup server by switching. However, no settings can be performed for the backup server if Use Backup Server is not checked.

[Server Name]

Enter here the video server names. Input the IP address or host name which can be recognized by name resolution.

[User ID]

Enter here the user IDs to connect the video server set. A password is always required for each user ID.

8. OPTION SETTINGS

[Password]

Enter here the passwords corresponding to User IDs. A setting without a password cannot be performed. (See note 14 below)

[DIF File Directory]

Specify here the directories serving as the base points for mounting into ClipCopy.

[Enable Sub-clip mode]

This activates the subclipping function.

[Enable removing files on server]

This makes it possible to delete files on the server. (See note 15 below)

[Remove files on Backup server]

If a backup server is used, this activates the setting to automatically delete files with the same name on the backup server when files on the main server are to be deleted.

[Auto Mount]

Check this for automatic mounting into the server of this group.

[Details...]

When this button is pressed, more detailed settings can be performed for individual video servers.

When the button is selected, the dialog box shown in Fig. 8-3 appears.



Fig. 8-3

Note14: Although some video servers do not require a password to be set, input a particular character string as the password even with these servers.

Note15: The settings differ from one video server model to another. For details, consult your dealer.

8. OPTION SETTINGS

[Transfer Format] (See note 15)

This specifies the file transfer format. (The SMPTE 314M DIF format is the default format.)

[Transfer Protocol] (See note 15)

This specifies the file transfer protocol to be used for file transfer. (FTP is the default protocol.)

[Check file attributions] (See note 15)

When clip data is to be exported, this checks file attributions (overwrite prohibition) if there are files with the same name on the video server as clips being exported to.

[Support Allocate Command] (See note 15)

Prior to the file transfer (Export) from NLE to the server via ClipCopy software, this makes it possible to inform the size of file to the server.

[Clip Name Options...]

When exporting clips, this specifies clip (file) names and limits clip name length.



[Enable Clip Name Validation]

[Enable File Name Validation]

This checks the filenames when clips are to be exported to the server. The characters which cannot be used as BIN names and clip names were specified in the Chapter 1 "Introduction," but checks on such characters as !, @, #, \$, &, -, (,), + and ¥ are performed by this.

[Clip Name length]

This specifies whether clip name length is limited or not. When Define maximum length has been selected, the number of characters of clip names can be entered.

8. OPTION SETTINGS

8.2 Other Options

General settings

In general settings, the setting to ClipCopy operation can be performed. Select the General tab on the Options dialog window shown in Fig. 8-3.



Fig. 8-4

[Show all files]

This option is for displaying all the meta data files on the video server or local drive as well. If this is not checked, the .DIF extensions of the DIF files are not displayed.

[Remove .DIF Files Extension]

This option is for not appending the .DIF extension to the DIF files which are generated when clips are exported.

[Enable Logging]

This creates the information relating to operation and error information and records it in log files.

[Mount on local drives]

This option is for mounting the newsBYTE/QuickCutter local drive (hard disk drive connected in NT). This makes it possible to import or export clips to or from the local drive as well as with the video server.

[Server connect timeout]

Communication is terminated with the video server when there is no response from the video server even after the time (in milliseconds) set here has elapsed. Set a value from 3000 to 15000.

8. OPTION SETTINGS

NewsAutomation settings

The settings relating to News Automation can be performed when the NewsAutomation tab is selected. Select this tab on the Options dialog window shown in Fig. 8-5.

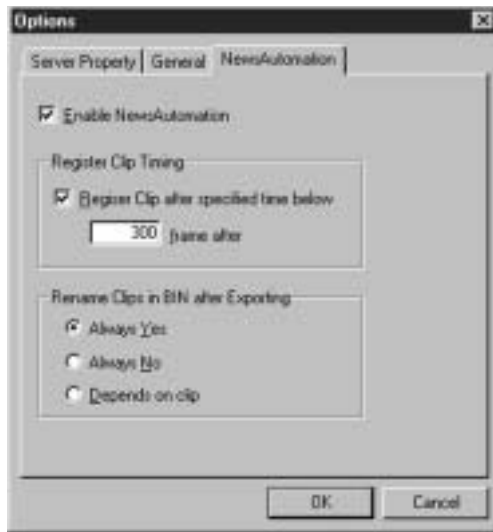


Fig. 8-5

[Enable NewsAutomation]

Checking this enables the News Automation functions.

[Register Clip Timing]

This is valid when Register Clip after specified time below has been checked. When registering a clip in the automation server, set the number of frames which are to elapse after clip transfer has commenced before the clip is registered. If the number of frames selected here is greater than the number of frames in the transferred clip, the clip is registered after it has been transferred. If Register Clip after specified time below has not been checked, the clip is registered after it has been transferred.

[Rename Clips in BIN after Exporting]

After exporting clip data, this specifies whether clip names acquired from automation server are used as clip names in BIN.

- **Always Yes**
Clip names from automation server are always used as the clip names in BIN.
- **Always No**
After exporting clip data, clip names in BIN remain unchanged.
- **Depends on clip**
After exporting each clip data, this checks whether clip names are changed or not.

9. CLIPCOPY MENUS

ClipCopy has the following menus: [File], [Edit], [View], [Volume], [Tools] and [Help].

[File] menu

This menu is for initiating the ClipCopy's overall operations as well as the file and clip operations.

[Delete] menu item

This is for deleting selected files. BIN clips cannot be deleted.

[Options...] menu item

This opens the dialog window for the settings. Refer to chapter 8 for details on the setting method.

[Exit] menu item

This is for exiting ClipCopy.

[Edit] menu

This menu is initiating the file and clip operations.

[Copy] menu item

This is for copying selected files or clips to the clipboard.

[Paste] menu item

This is for copying (transferring) a file or clip on the clipboard to the selected volume. The Copy or Paste operation can be performed by drag & drop.

[Select All] menu item

This is for selecting all the files and clips.

[View] menu

This menu is for changing the List View display format.

[Status Bar] menu item

This is for displaying the ClipCopy status bar.

[Large Icons] menu item

This is for displaying the files or clips with large icons.

[Small Icons] menu item

This is for displaying the files or clips with small icons.

[List] menu item

This is for displaying the files or clips as a list.

[Details] menu item

This is for displaying detailed information of the files or clips. (See Note 16 below)

[Refresh] menu item

This is for updating the information displayed with ClipCopy to the latest information.

Note16:It may not be possible to display some information depending on the video server model and file classification.

9. CLIPCOPY MENUS

[Volume] menu

This menu is for performing volume operations.

[Mount] menu item

This opens the video server mounting dialog box shown in the Fig. 9-1. Select the group to be mounted from the server group list displayed, and press the [OK] button.



Fig. 9-1

[Unmount] menu item

This is for unmounting the video server which was selected on Volume View.

[Tools] menu

[EDL Import...]

This opens the dialog box for importing EDL. Importing the clips described in EDL files can be transferred after importing EDL files formatted CMS3600 or CMX 3600 Discreet.

[Help] menu

This menu is for providing the information on ClipCopy.

[About ClipCopy...] menu item

This opens the information on ClipCopy dialog box. The version information on ClipCopy and on the libraries used by ClipCopy is displayed.

10. CLIPCOPY TOOLBAR

The ClipCopy toolbar consists of the News Automation Mode for selecting the News Automation usage format as well as the [Copy] and [Paste] buttons for copying and pasting files and clips as shown in Fig.10-1.



Fig. 10-1

10.1 News Automation Mode

This is for selecting the News Automation usage format. The News Automation mode is operational only when the News Automation mode is used (that is to say, when the Enable NewsAutomation option has been checked). The Normal mode is the default setting as shown in Fig.10-2.



Fig. 10-2

[Normal mode]

In this mode, the names of the clips are captured from the run-down list (See Note 17 below.), and News Automation system operates normally to register the clips under these names in the automation server.

[Register Only mode]

In this mode, the run-down list is not referenced, and the News Automation system operates solely to register the clips under their current names in the automation server.

10.2 Other

[Copy] button



Fig. 10-3

This function in the same way as the [Copy] menu item on the [Edit] menu.

[Paste] button



Fig. 10-4

This functions in the same way as the [Paste] menu item on the [Edit] menu.

Note17: This is the list of the video data which is scheduled to go on the air and which is controlled by the automation server. The News Automation system uses the names of the video data on the run-down list in order to exercise centralized control over the video data.

11. CONCERNING THE USE OF THE BACKUP SERVER

The backup server can be used by checking and enabling the Use Backup Server among the server options in Section 8-1. When the backup server is used, the clips transferred to the main server are also transferred to the backup server. Compared with regular transfer solely to the main server, it takes double the transfer time to send the target clips to the backup server after they have been transferred to the main server.

When the backup server is used, one of the following four statuses is established depending on the operating modes of the main server and backup server and the connection mode of the network. This status is displayed on Volume View.

Connection is made both the main server and backup server (normal status)



Fig. 11-1

Connection is made to the main server but not to the backup server



Fig. 11-2

Connection is made to the backup server but not to the main server



Fig. 11-3

Connection is made neither to the main server nor to the backup server



Fig. 11-4

If a status other than the normal status shown in Fig. 11-1 is established, an error in one of the connection setting for the optional main server or backup server, hardware trouble or network trouble may be to blame. Consult with the system administrator.

Appendix1. Troubleshooting

Please read through this section when you are not sure what to do.

An “X” mark appears at the server icon on Volume View and the video server cannot be connected even though the server was set up using the [Options...] menu item on ClipCopy’s [File] menu.

Check the IP address and account settings with the system administrator again. Another important point is to re-check the network settings on Control Panel of WindowsNT. The Ping command is a useful one for checking the physical network connection between the nonlinear editor and server. The Ping command can be executed from Run (See Note 18 below.) or Command Prompt.

ping IP address (example: ping 192.128.72.3)

If the physical connections (cable connections and TCP/IP protocol settings) have been performed correctly, a response will be returned from the communication destination designated using the IP address.

When the server name is used, the network must be set in such a way that the name resolution can be performed properly.

Files cannot be imported or exported even though the server icon is displayed indicating the connected status on Volume View and the server’s files are displayed on List View.

The user, who has been set as an option, may not have been granted read/write permission for the target server’s files and directories. In this case, it may not be possible to import or export files. Check with the system administrator.

When clips have been added to (or deleted from) a Bin or server, the clips added to (or delete from) ClipCopy’s List View are not (or are) displayed.

The clips and BINs which have been added (deleted or renamed) at the newsBYTE/QuickCutter side and, similarly, the files and directories which have been added (deleted or renamed) at the server side are not reflected on list view of ClipCopy. To reflect them, refresh the list view window by executing Refresh (F5) from the [View] on the menu bar of ClipCopy.

Note18: This is located on the Windows Start menu.

Appendix1. Troubleshooting

An error may result when an attempt is made to use ClipCopy to export clips captured by a digitizer or sequence clips created by a sequence editor, to the server.

Verification is performed using the A/V clips or sequence in which various A/V clips are combined. However, if an error (error code) has resulted when exporting clips, use an editing application to place and render the A/V clips in a sequence and then export them or in the sequence clips, save them as A/V clips after rendering, and then export them. Although ClipCopy does not support the importing and exporting of audio clips, they can be rendered using a sequence editor to create A/V clips which can then be imported or exported.

Format Error occurs when importing clips from the server.

newsBYTE/QuickCutter has specifications which support only the DVCPRO format and prohibits the importing of clips in the DV format or DV-compatible format. It also prohibits the importing of clips with different signal types (NTSC/PAL). As a general rule of thumb, DVCPRO format is defined as DVCPRO (25Mbps) compression, audio 16 bits/48 kHz sampling, 2 channels and only lock mode.

Appendix1. Troubleshooting

Listed below are the error codes used by ClipCopy.

Error Code	Error Message
-20001	Application error was occurred.
-20010	Transfer operation was cancelled.
-20100	There is not enough free memory.
-20101	Windows system error.
-20106	WIN32 function error.
-20109	Failed to connect with server.
-20110	The log file cannot be opened.
-20200	File already exists.
-20201	File does not exist.
-20202	File icon does not exist.
-20203	There is not enough disk space.
-20204	Remote file is write protected.
-20300	System error has occurred.
-20301	Incorrect data format.
-20302	Failed to shuffle data.
-20303	Failed to reverse shuffling data.
-20304	Failed to render.
-20306	NLE System disk space insufficient.
-20308	Cannot retrieve Clip Icon.
-20400	Invalid video format.
-20401	The file is too large for ClipCopy.
-20402	This Clip has illegal Timecode.
-20403	Specified Out point is the same point as the In point.
-20404	Specified In point is out of range.
-20405	Specified Out point is out of range.
-20406	Specified point is illegal.
-20500	Interrupted function call.
-20501	The file handle supplied is not valid.
-20502	Permission denied.
-20503	Bad address.
-20504	Invalid argument.
-20505	Too many open files.

Appendix1. Troubleshooting

Error Code	Error Message
-20506	Resource temporarily unavailable.
-20507	Operation now in progress.
-20508	Operation already in progress.
-20509	Socket operation on nonsocket.
-20510	Destination address required.
-20511	Message too long.
-20512	Protocol wrong type for socket.
-20513	Bad protocol option.
-20514	Protocol not supported.
-20515	Socket type not supported.
-20516	Operation not supported.
-20517	Protocol family not supported.
-20518	Address family not supported by protocol family.
-20519	Address already in use.
-20520	Cannot assign requested address.
-20521	Network is down.
-20522	Network is unreachable.
-20523	Network dropped connection on reset.
-20524	Software caused connection abort.
-20525	Connection reset by peer.
-20526	No buffer space available.
-20527	Socket is already connected.
-20528	Socket is not connected.
-20529	Cannot send after socket shutdown.
-20530	Too many references to some kernel object.
-20531	Connection timed out.
-20532	Connection refused.
-20533	Cannot translate name.
-20534	Name component or name was too long.
-20535	Host is down.
-20536	No route to host.
-20537	Cannot remove a directory that is not empty.
-20538	Too many processes.

Appendix1. Troubleshooting

Error Code	Error Message
-20539	Ran out of quota.
-20540	Ran out of disk quota.
-20541	File handle reference is no longer available.
-20542	Item is not available locally.
-20543	Graceful shutdown in progress.
-20544	Network subsystem is unavailable.
-20545	Winsock.dll version out of range.
-20546	Successful WSASStartup not yet performed.
-20547	Host not found.
-20548	Nonauthoritative host not found.
-20549	This is a nonrecoverable error.
-20550	Valid name, no data record of requested type.
-20551	NBFTP unknown error was occurred.
-20552	NBFTP read/write timeout was occurred.
-20553	NBFTP FTP error code.
-20554	NBFTP invalid socket.
-20600	File transfer error was occurred (Import GXF).
-20601	Specified file not found.
-20602	No disk space to record.
-20603	File transfer error was occurred (Export GXF).
-20604	File already exists or could not open.
-20700	EDL Import Readline error.
-20701	EDL Import Analyze error.
-20702	EDL Import Create&Store Information in the intermediate file.
-20703	EDL Import Read clip information from the intermediate file.
-21001	VST/MVCP Parameter Error.
-21002	VST/MVCP TC Format (DF/NDF) Error.
-21003	VST/MVCP Not Ready.
-21004	VST/MVCP Command Error.
-21005	VST/MVCP Buffer Overflow.
-21006	VST/MVCP Buffer Overrun.

Appendix1. Troubleshooting

Error Code	Error Message
-21007	VST/MVCP Buffer Underrun.
-21008	VST/MVCP Line Number Overflow.
-21009	VST/MVCP Line Number Underflow.
-21010	VST/MVCP No Data In Buffer.
-21011	VST/MVCP Data Count Exceeded.
-21012	VST/MVCP Invalid Socket.
-21013	VST/MVCP Protocol Error.
-21014	VST/MVCP Unknown Error.
-21015	VST/MVCP Socket Error.
-21016	VST/MVCP Receive Error.
-21017	VST/MVCP Send Error.
-21018	VST/MVCP WinSock Initialize Error.
-21019	VST/MVCP Telnet (Winsock) Initialize Error.
-21020	VST/MVCP Receiving Buffer Not Empty.
-30001	News Automation error has occurred.
-30002	Cannot rename clip in a BIN.
-30003	There is no such file or directory on server. Please refresh ClipCopy
-30004	The directory list could not be retrieved.
-30005	ClipCopy cannot execute duplication.
-30006	The server might not be running, or the connections to it might be down.
-30007	Clip does not exist in bin. Please refresh ClipCopy.
-30008	File permission denied.
-30009	You can not use following characters as the clipname: / : , ; * ? " < > . And, you can not use space and . as the first character of clipname.
-30010	Cannot get Clip Name.
-30011	The main server might not be running, or the connections to it might be down.
-30012	The backup server might not be running, or the connections to it might be down.

Appendix1. Troubleshooting

Error Code	Error Message
-30013	Invalid character in clipname. Please input new clip-name.
-30014	Clip Name too long.
-30015	Subclip mode is not supported on your system.
-30016	The device is not ready.
-30017	Specified Timecode Type is different from the Clip Timecode Type.
-31000	Please input Group Name.
-31001	Group Name group already exists.
-31002	Please input main server name.
-31003	Please input userID for main server.
-31004	Please input password for main server.
-31005	Please input DIF files directory for main server.
-31006	Please input Meta files directory for main server.
-31007	Please input backup server name.
-31008	Please input userID for backup server.
-31009	Please input password for backup server.
-31010	Please input DIF files directory for backup server.
-31011	Please input Meta files directory for backup server.
-32001	News Automation Error-News Automation system error has occurred.
-32002	News Automation Error-Cannot connect to News Automation server.
-32003	News Automation Error-Network error.
-32004	News Automation Error-Request time out.
-32005	News Automation Error-NBNAPI Library is not initialized.
-32006	News Automation Error-Current News Automation type is not supported.
-32007	News Automation Error-Invalid News Automation type.
-32008	News Automation Error-News Automation DLL does not exist.
-32009	News Automation Error-Transfer operation was cancelled.

Appendix1. Troubleshooting

Error Code	Error Message
-32010	News Automation Error-There is no such clip name in News Automation Database.
-32011	News Automation Error-Rundown Window cannot be opened.
-32012	News Automation Error-Illegal Clip information.
-32022	News Automation Error-News Automation server cannot be found.
-32023	News Automation Error-Specified clip is not registered.
-32024	News Automation Error-This function is not supported on this News Automation.
-32999	News Automation Error-Unknown error has occurred.
-34001	Please select EDL file.
-34002	Server Group Information is not registered.
-34003	Selected Server does not support specified format.
-34004	Selected Server does not support specified protocol.
-39000	Rendering was halted.
-39001	The account does not have Write permission on the Video Pool.
-39002	The account does not have Write permission on the Audio Pool.
-39003	Open write-only Project.
-39004	Open read-only Project.
-39005	The account does not have Read&Write permission on the Project.
-39999	Unknown error has occurred.

Appendix2. How to check the WindowsNT network software

The TCP/IP protocol in WindowsNT must be installed in order for the ClipCopy application to be run. Whether this protocol has been installed can be checked by following the steps below.

If it has not been installed, consult your dealer.

1. Exit all applications, and click the Start button on the WindowsNT task bar. (See Fig. 1 and 2.) If the task bar is not on the screen, move the cursor near the bottom of the display, and the task bar will appear below the display area.



Fig. 1

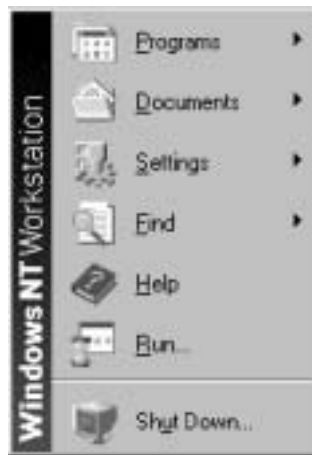


Fig. 2

2. Move the cursor to [Settings] in the Start menu. (See Fig. 3.) Click the Control Panel item from the pop-up menu.

Appendix2. How to check the WindowsNT network software



Fig. 3

3. The Control Panel window (See Fig. 4.) will now appear. Double click on the network icon.



Fig. 4

4. When the network properties sheet (See Fig. 5.) has appeared, click on the Protocols tab.

Caution: If a network card has not been installed, a message dialog window will appear prompting the user to check whether a network card is to be installed. In this case, it means that the conditions which are to be satisfied by the system environment in which the ClipCopy application is to be installed, have not been satisfied. Abort the check procedure, and consult your dealer.

Appendix2. How to check the WindowsNT network software



Fig. 5

5. Click on the Protocols tag on the network settings panel. (See Note 19 below.)



Fig. 6

6. Check that the TCP/IP protocol is displayed in the network protocol field of the protocols tab. (See Fig. 6.)

Caution: If it is not displayed, the TCP/IP protocol has not been installed. Consult your dealer.

Note19: Select a setting that will ensure consistency for the "Computer Name" throughout the network when multiple newsBYTE/QuickCutter applications are to be used in the network.

Appendix2. How to check the WindowsNT network software

7. Click on the TCP/IP protocol in the network protocol field to select it, and click on the [Properties...] button. The "TCP/IP properties" will now be displayed. Check the IP address and subnet mask settings.
Consult your system administration manager before establishing and/or checking the settings.
8. Refer to the instructions in the WindowsNT manual, and proceed with name resolution for the video server name. For details on name resolution, consult your system administration manager.
9. Upon completion of the checks, click on the [OK] button to close the properties sheets. A message box prompting you to decide whether to restart the system may appear when the network properties sheets are closed. Click on [Yes] to restart WindowsNT only when one or more of the settings have been changed; when no changes have been made, click on [No].

Panasonic

PANASONIC BROADCAST & TELEVISION SYSTEMS COMPANY
DIVISION OF MATSUSHITA ELECTRIC CORPORATION OF AMERICA

Executive Office:

3330 Cahuenga Blvd W., Los Angeles, CA 90068 (323) 436-3500

EASTERN ZONE:

One Panasonic Way 4E-7, Secaucus, NJ 07094 (201) 348-7621

Southeast Region:

1225 Northbrook Parkway, Ste 1-160, Suwanee, GA 30024 (770) 338-6835

Central Region:

1707 N Randall Road E1-C-1, Elgin, IL 60123 (847) 468-5200

WESTERN ZONE:

3330 Cahuenga Blvd W., Los Angeles, CA 90068 (323) 436-3500

Government Marketing Department:

52 West Gude Drive, Rockville, MD 20850 (301) 738-3840

Broadcast PARTS INFORMATION & ORDERING:

9:00 a.m. – 5:00 p.m. (EST) (800) 334-4881/24 Hr. Fax (800) 334-4880

Emergency after hour parts orders (800) 334-4881

TECHNICAL SUPPORT:

Emergency 24 Hour Service (800) 222-0741

Panasonic Canada Inc.

5770 Ambler Drive, Mississauga, Ontario L4W 2T3 (905) 624-5010

Panasonic de Mexico S.A. de C.V.

Av angel Urraza Num. 1209 Col. de Valle 03100 Mexico, D.F. (52) 1 951 2127

Panasonic Sales Company

Division of Matsushita Electric of Puerto Rico Inc.

San Gabriel Industrial Park, 65th Infantry Ave., Km. 9.5, Carolina, Puerto Rico 00630 (787) 750-4300

Panasonic Broadcast Europe

Panasonic Broadcast Europe Ltd

West Forest Gate, Wellington Road, Wokingham, Berkshire RG40 2AQ U.K. Tel: 0118 902 9200