

XDCAM Browser

Installation Guide

Before operating the unit, please read this manual thoroughly and retain it for future reference.

NOTICE TO USERS

Documentation © 2010, 2011, 2012 Sony Corporation
All rights reserved. This manual or the software described herein, in whole or in part, may not be reproduced, translated or reduced to any machine readable form without prior written approval from Sony Corporation.

SONY CORPORATION PROVIDES NO WARRANTY WITH REGARD TO THIS MANUAL, THE SOFTWARE OR OTHER INFORMATION CONTAINED HEREIN AND HEREBY EXPRESSLY DISCLAIMS ANY IMPLIED WARRANTIES OF MERCHANTABILITY OR FITNESS FOR ANY PARTICULAR PURPOSE WITH REGARD TO THIS MANUAL, THE SOFTWARE OR SUCH OTHER INFORMATION. IN NO EVENT SHALL SONY CORPORATION BE LIABLE FOR ANY INCIDENTAL, CONSEQUENTIAL OR SPECIAL DAMAGES, WHETHER BASED ON TORT, CONTRACT, OR OTHERWISE, ARISING OUT OF OR IN CONNECTION WITH THIS MANUAL, THE SOFTWARE OR OTHER INFORMATION CONTAINED HEREIN OR THE USE THEREOF.

Sony Corporation reserves the right to make any modification to this manual or the information contained herein at any time without notice.

The software described herein may also be governed by the terms of a separate user license agreement.

Registered Trademarks

- Microsoft, Windows, and Windows Vista are registered trademarks of Microsoft Corporation in the United States and other countries.
- Intel, Intel Core and Pentium are trademarks or registered trademarks of Intel Corporation or its subsidiaries in the United States and other countries.
- Mac OS, Safari, and Final Cut Pro are trademarks of Apple Inc., registered in the U.S. and other countries.
- MainConcept is a trademark of MainConcept GmbH or its subsidiaries.
- Blu-ray Disc and associated logos are trademarks of the Blu-ray Disc Association.
- All product names and brand names are registered trademarks or trademarks of their respective owners.

Table of Contents

Installing on Windows

Introduction	5
Purpose of this manual	5
Notes on use of XDCAM devices	5
Overview	5
Hardware and software requirements	6
Installing the Drivers	6
Installing from the CD-ROM	6
Confirming the driver version	7
Installing XDCAM Browser	7
Installing from the CD-ROM	7
Launching and Exiting the Application	8
Launching the application	8
Exiting the application.....	8
Media Operations	9
Handling Professional Disc files	9
Handling SxS memory card files.....	10

Installing on Mac OS

Introduction	11
Purpose of this manual	11
Notation for special keys	11
Notes on use of XDCAM devices	11
Overview	11
Hardware and software requirements	11
Installing the Drivers	12
Installing from the CD-ROM	12
Confirming the driver version	12
Installing XDCAM Browser	13
Installing from the CD-ROM	13
Launching and Exiting the Application	15
Launching the application	15
Exiting the application.....	15
Media Operations	15
Handling Professional Disc files	15
Handling SxS memory card files.....	16

Retail Option Functions

Introduction	17
Overview	17
Purchasing a Serial Number	18
If XDCAM Browser was supplied on CD-ROM with an XDCAM Device or downloaded from the website	18
If XDBZ-AD1 (advanced pack for XDCAM Browser) was purchased	18
Registering a Serial Number	19

Installing on Windows

Overview

The XDCAM Browser allows you to work with clips created with XDCAM EX/XDCAM devices. After installing this application on your computer, you can use its intuitive graphical user interface to organize your clips by copying, moving, and deleting them. You can also perform format conversions, preview the clips, and view their metadata.

This software supports the following clip formats.

Clip	File format	Extension
XDCAM EX format compatible clips	MP4	MP4
	DV-AVI Type2 ^{a)} ^{b)}	AVI
XDCAM format clips	MXF ^{b)}	MXF

a) Referred to in this manual as “DV-AVI clips” or “DV-AVI files”.

b) Some functions are not supported.

Note

SxS memory card that contains HQ 1440 clips or DV-AVI clips is not recognized as usable media by the PMW-EX1/EX3/EX30.

Introduction

Purpose of this manual

This section describes how to install XDCAM Browser for use in Microsoft Windows. It assumes that readers have a basic familiarity with Microsoft Windows.

For details on operating this software, refer to the online help that is installed with this software or the User’s Guide (PDF).

Notes on use of XDCAM devices

- This software cannot access an XDCAM device while another XDCAM-compatible application is accessing that device.
- While running this software, if it becomes necessary to connect/disconnect the IEEE1394 cable or power on/off the XDCAM device, always do such operations after you exit this software.

Hardware and software requirements

Install this application on a computer meeting the following hardware and software requirements.

Item	Description
OS	Microsoft Windows XP SP3 or higher (32-bit version), Microsoft Windows Vista SP2 or higher (32-bit version or 64-bit version), or Microsoft Windows 7 SP1 or higher (32-bit version or 64-bit version)
CPU	Intel Pentium 4 2.0 GHz or higher (Intel Core 2 Duo Processor 2.0 GHz or higher recommended)
Memory	1 GB or more (2 GB or more recommended)
Display	Resolution: 1024 × 768 pixels or better
Audio	Audio playback function
Other	<ul style="list-style-type: none"> • Windows Desktop Search (WDS) ^{a)} • Windows Internet Explorer 7 or higher ^{b)}

a) To use keyword searching on Windows XP, Windows Desktop Search (WDS) must be installed. Keyword searching is not available if WDS is not installed or if the installed version is not the latest version. The WDS component is preinstalled on Windows Vista and Windows 7. It does not need to be installed again. This software has been verified to operate in conjunction with WDS Version 3.10.

b) When viewing or printing exported clip information

Refer to the ReadMe file for XDCAM device versions supported by this application.

Installing the Drivers

To access files and use video material stored on a Professional Disc or SxS Memory Card with computer-installed XDCAM Browser software or nonlinear editing software, the appropriate driver for each media type must be installed.

You can install the drivers from the Utility Software for XDCAM CD-ROM, or download them from the Web site. The drivers for each media are as follows.

To use Professional Discs inserted in an IEEE1394-connected XDCAM device:

Install the FAM Driver from the CD-ROM.

To use Professional Discs inserted in an XDCAM drive:

Refer to the operating instructions for the XDCAM drive, and install the XDCAM Drive Software. The XDCAM Drive Software is not included on the XDCAM Browser CD-ROM.

To use SxS memory cards inserted in an ExpressCard slot:

Install the SxS Device Driver from the CD-ROM.

To use SxS memory cards in UDF format:

Install the SxS Device Driver and the SxS UDF Driver from the CD-ROM.

Be sure to install the SxS Device Driver first.

Installing from the CD-ROM

You can install the FAM Driver, SxS Device Driver, and SxS UDF Driver from the Utility Software for XDCAM CD-ROM.

- 1 Insert the CD-ROM into the CD-ROM drive of your computer.

The cover page appears automatically in your browser. If it does not appear, double click index.htm on the CD-ROM.

- 2 Click the driver you want to install.

The installer for the driver starts. Follow the instructions on the screen to install the driver.

For details, refer to the ReadMe file stored on the CD-ROM.

XDCAM Drive Software installation

The XDCAM Drive Software is not included on this software CD-ROM. For details on installing the XDCAM Drive Software, refer to the operating instructions for the XDCAM drive.

Confirming the driver version

If a driver is already installed on your computer, confirm that the following version of the driver or later is installed. You can find the latest versions of drivers on the XDCAM Web site.

- FAM Driver: Ver. 2.3.0 or later
- XDCAM Drive Software: Ver. 3.1.1 or later
- SxS Device Driver: Ver. 1.1.0.0 or later
- SxS UDF Driver: Ver. 1.0.2 or later

To confirm the FAM Driver, SxS Device Driver, and SxS UDF Driver versions

Confirm the driver versions as follows from the Control Panel. The drivers are displayed under the following names in the Control Panel.

- FAM Driver: ProDisc
- SxS Device Driver: SxS Device Driver
- SxS UDF Driver: Sony SxS UDF Driver

For Windows XP

Select the driver in [Add or Remove Programs] of the Control Panel, and click [Click here for support information].

For Windows Vista

- 1 Select [Programs] > [Programs and Features] in the Control Panel, right click the header area where [Name] and [Publisher] are displayed, and select [More].
- 2 Select the [Version] check box in the [Choose Details] dialog, and click [OK].

A version column appears allowing you to confirm the version.

For Windows 7

Open [Programs and Features] in the Control Panel to confirm the driver version.

Note

If your computer is equipped with a built-in ExpressCard slot, the SxS Device Driver may not appear. In such cases, obtain the latest driver using Windows Update.

To confirm the XDCAM Drive Software version

Use the XDCAM Drive Software utility software to confirm the software version.

Installing XDCAM Browser

If the MainConcept plug-in software is installed

Purchase or update to the full function version of MainConcept Conversion Pack at the MainConcept Web site. You can access the MainConcept Web site by selecting [About MainConcept Conversion Pack...] in the [Help] menu, and then clicking the URL in the dialog box that appears.

Note

If you purchased the full function version of MainConcept Conversion Pack for use with XDCAM Browser version 2.0 or earlier and then updated the XDCAM Browser version, you must download the plug-in software update that supports version 2.1 of XDCAM Browser. For details, visit the MainConcept Web site.

Installing from the CD-ROM

- 1 Insert the supplied CD-ROM into the CD-ROM drive of your computer.

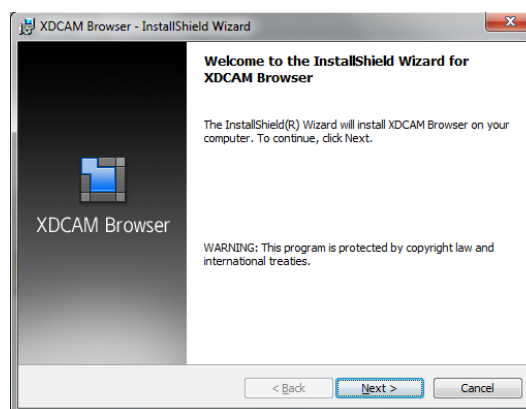
The cover page appears automatically in your browser. If it does not appear, double click index.htm on the CD-ROM.

- 2 Select and click [Windows XP/Vista/7] from the XDCAM Browser Installer.

The folder where the setup application is stored appears.

- 3 Double click XDCAMBrowser.exe.

The setup wizard appears.

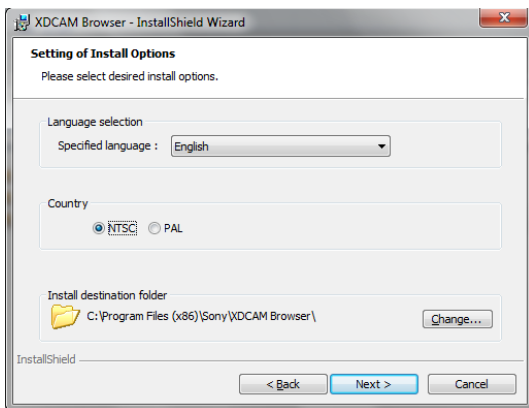


- 4 Click the [Next] button in the setup wizard.

A license agreement screen appears.

- 5 Click the [Accept] button, and then click the [Next] button.

The following screen appears.



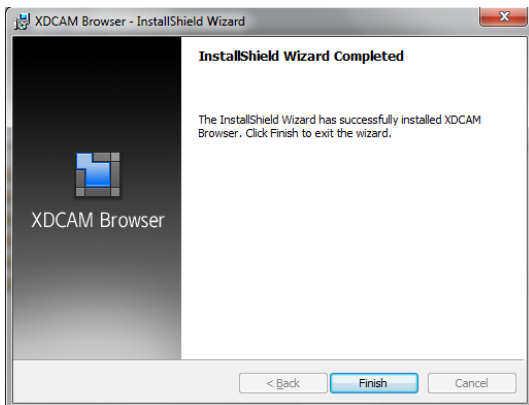
- 6 Change the settings as required, and then click the [Next] button.

To change the installation destination

Click the [Browse...] button and select the folder in the dialog that appears.

Complete the installation by following the instructions on the screen.

The following screen appears when the installation finishes.



- 7 Click the [Finish] button to close the dialog.

To uninstall the application

Select Add or Remove Programs in the Windows Control Panel, and then select and delete [XDCAM Browser] from the list of installed programs.

Note

Uninstalling the application also uninstalls the MainConcept plug-in software at the same time.

Launching and Exiting the Application

See “Installing XDCAM Browser” (page 7) for more information about how to install the application.

Launching the application

Double click the shortcut icon on the desktop.

Note

It is not possible to launch more than one instance of this application at one time.

Exiting the application

Do one of the following.

- Select [Exit] from the [File] menu.
- Click the × button in the upper right of the operating window.

Note

Do not power off the computer while a file operation is still underway. Files may be corrupted. Wait until the operation finishes, or cancel the operation, before powering off.

Media Operations

Handling Professional Disc files

When using an IEEE1394-connected device

When a Professional Disc device is connected via IEEE1394 to a computer on which the FAM Driver is installed, you can handle files using File Access Mode (FAM). You can handle the files stored on the Professional Disc device as you would files stored on a local drive or a network computer.

Notes

- This software does not support stream mode connections for IEEE1394.
For details on use other than in FAM, refer to the operating instructions for the supported device or editing software.
- For details on switching devices to FAM mode (displayed on the device as PC REMOTE) or information on device limitations, refer to the operating instructions for each device.
- When a device is connected using FAM for the first time, the [Found New Hardware Wizard] dialog appears. In such cases, select [Install the software automatically] to perform installation. Click [Finish] when the software installation finishes.

When using an XDCAM drive

When an XDCAM drive is connected via USB to a computer on which the XDCAM Drive Software is installed, you can handle files stored on the Professional Disc as you would files from a FAM-connected device.

Limitations and restrictions

- With the exception of the EJECT button, the control panel of the connected device is disabled.
- If you turn off power to a FAM-connected device or XDCAM drive while data transfer is in progress, the data will be damaged.
- Some operations may be disabled depending on the file type.

Ending Professional Disc operations

If storage media has been mounted, remove it by pressing the device's EJECT button or by selecting eject from the computer's context menu. If any files on the storage media are in use by applications, you may not be able to remove the media in this manner. In such cases, remove the disc

from the application, or terminate the application and then remove the media.

When you are finished with operations, perform the procedure for safely removing devices from your computer before removing the device. Do not disconnect the device until the removal process is complete.

To remove an IEEE1394-connected device

For Windows XP/Windows Vista:

- 1 Double click the [Safely Remove Hardware] icon on the computer's taskbar.
The [Safely Remove Hardware] dialog appears.
- 2 Select the device you want to remove, and click [Stop].
The [Stop a Hardware device] dialog appears.
- 3 Select the device you want to remove, and click [OK].

For Windows XP:

The selected device is removed from the [Hardware devices] list.

For Windows Vista:

The "This device can now be safely removed from the computer" message appears.

When the operation is complete, disconnect the IEEE1394 cable if necessary.

For Windows 7:

Click the [Safely Remove Hardware] icon on the computer's taskbar, and select [SonyXDCAM_ "device name"] > [Remove "disc name"].

If a disc name is not configured, "XDCAM" is displayed.

When the operation is complete, disconnect the IEEE1394 cable if necessary.

To remove an XDCAM drive

- 1 Click the [Safely Remove Hardware] icon on the computer's taskbar.
- 2 Select the XDCAM drive you want to remove from the menu that appears.
- 3 When a message indicating that the card can be safely removed appears, disconnect the USB cable.

Handling SxS memory card files

You can access SxS memory cards inserted in devices connected as follows from a computer on which the SxS Device Driver or the SxS UDF Driver (when using UDF format) is installed.

- Connected via the ExpressCard slot on the computer
- Card readers/writers connected to the computer via USB
- XDCAM EX/XDCAM devices connected to the computer via USB

Information recorded for materials stored on an SxS memory card may span multiple files and folders. XDCAM Browser allows you to handle this information and file directories easily, without worrying about structure. However, if you use Windows Explorer to perform operations such as copying clips from the SxS memory card, the information stored with the clip may not be retained. To prevent such occurrences, we recommend performing file operations using supported applications.

Note

For details on switching operation modes or information on device limitations, refer to the operating instructions for each device.

Limitations and restrictions

Do not perform the following operations while the computer is accessing the SxS memory card.

- Turn ON/OFF the XDCAM EX/XDCAM device or memory card reader/writer
- Remove or insert SxS memory cards
- Disconnect or connect USB cables
- Change the setting of the write protect switch on an SxS memory card

Ending SxS memory card operations

When using a card inserted in an ExpressCard slot

When you are finished with operations, perform the procedure for safely removing devices from your computer before removing the device. Do not remove the card until the removal process is complete.

- 1 Click the [Safely Remove Hardware] icon on the computer's taskbar.
- 2 Select the SxS memory card you want to remove from the menu that appears.
- 3 When a message indicating that the card can be safely removed appears, remove the card.

When using an XDCAM device or memory card reader/writer connected by USB

- 1 Click the [Safely Remove Hardware] icon in the computer's taskbar.
- 2 Select the XDCAM device or memory card reader/writer to be removed from the menu that appears.
- 3 When a message indicating that the device can be safely removed appears, unplug the USB cable.

When removing an SxS memory card, always make sure that the access lamp is out.

Installing on Mac OS

Overview

The XDCAM Browser allows you to work with clips created with XDCAM EX/XDCAM devices. After installing this application on your computer, you can use its intuitive graphical user interface to organize your clips by copying, moving, and deleting them. You can also perform format conversions, preview the clips, and view their metadata.

This software supports the following clip formats.

Clip	File format	Extension
XDCAM EX format compatible clips	MP4	MP4
	DV-AVI Type2 ^{a) b)}	AVI
XDCAM format clips	MXF ^{b)}	MXF

a) Referred to in this manual as “DV-AVI clips” or “DV-AVI files”.

b) Some functions are not supported.

Note

SxS memory card that contains HQ 1440 clips or DV-AVI clips is not recognized as usable media by the PMW-EX1/EX3/EX30.

Introduction

Purpose of this manual

This section describes how to install XDCAM Browser for use in Mac OS. It assumes that readers have a basic familiarity with Mac OS.

For details on operating this software, refer to the online help that is installed with this software or the User's Guide (PDF).

Notation for special keys

This manual uses the following notation to indicate special keys.

Symbol	Notation in this manual
⌘	Command
⇧	Shift
⌥	Option
⌘	Control
↵	Return

Notes on use of XDCAM devices

- This software cannot access an XDCAM device while another XDCAM-compatible application (XDCAM Transfer) is accessing that device.
- While running this software, if it becomes necessary to connect/disconnect the IEEE1394 cable or power on/off the XDCAM device, always do such operations after you exit this software.

Hardware and software requirements

Install this application on a computer meeting the following hardware and software requirements.

Item	Description
OS	Mac OS X 10.6.4 or higher, or Mac OS X 10.7.1 or higher
CPU	Intel Core 2 Duo Processor 2.0 GHz or higher (Intel Core 2 Duo Processor 2.4 GHz or higher recommended)
Memory	1 GB or more (2 GB or more recommended)
Other	Safari 4.0.2 or later ^{a)} ; Final Cut Pro 7 or Final Cut Pro X ^{b)}

a) To view or print exported clip information.

b) To use a function for registering clips from this software to Final Cut Pro. Select which version you are using in the environment settings. Final Cut Pro X is selected under default settings. Rewriting back to media is not supported in Final Cut Pro X.

Refer to the ReadMe file for XDCAM device versions supported by this application.

Installing the Drivers

To access files and use video material stored on a Professional Disc or SxS Memory Card with computer-installed XDCAM Browser software or nonlinear editing software, the appropriate driver for each media type must be installed.

You can install the drivers from the Utility Software for XDCAM CD-ROM, or download them from the Web site. The drivers for each media are as follows.

To use Professional Discs inserted in an IEEE1394-connected XDCAM device:

Install the FAM Driver from the CD-ROM.

To use Professional Discs inserted in an XDCAM drive:

Refer to the operating instructions for the XDCAM drive, and install the XDCAM Drive Software. The XDCAM Drive Software is not included on the XDCAM Browser CD-ROM.

To use SxS memory cards inserted in an ExpressCard slot:

Install the SxS Device Driver from the CD-ROM.

To use SxS memory cards in UDF format:

Install the SxS Device Driver and the SxS UDF Driver from the CD-ROM.

Be sure to install the SxS Device Driver first.

Note

SxS UDF Driver Ver. 1.0.1 or later must be installed to use XDCAM Browser's FAT formatting function for SxS memory cards. When using FAT-formatted SxS memory cards exclusively, the above driver must also be installed to use the operating life display function for SxS-1 memory cards.

Installing from the CD-ROM

You can install the FAM Driver, SxS Device Driver, and SxS UDF Driver from the Utility Software for XDCAM CD-ROM.

- 1 Insert the CD-ROM into the CD-ROM drive of your computer.
- 2 Double click index.htm in the root folder on the CD-ROM.
- 3 Click the driver you want to install.

The installer for the driver starts, or the included disk image file appears. If the installer package is included in the disk image file, double click the file to start the

installer. Afterward, follow the instructions on the screen to install the driver.

For details, refer to the ReadMe file stored on the CD-ROM.

XDCAM Drive Software installation

The XDCAM Drive Software is not included on this software CD-ROM. For details on installing the XDCAM Drive Software, refer to the operating instructions for the XDCAM drive.

Confirming the driver version

If a driver is already installed on your computer, confirm that the following version of the driver or later is installed. You can find the latest versions of drivers on the XDCAM Web site.

- FAM Driver: Ver. 2.3.2 or later
- XDCAM Drive Software: Ver. 3.1.1 or later
- SxS Device Driver: Ver. 1.0.52020 or later
- SxS UDF Driver: Ver. 1.0.2 or later

To confirm the FAM Driver version

Start the System Profiler under [Application] – [Utilities] while the Professional Disc device is connected to the computer via an IEEE1394 cable and a Professional Disc is inserted.

Select [Extensions] under [Software], and the version appears under [prodisc_fs].

To confirm the SxS Device Driver and SxS UDF Driver versions

Start the System Profiler under [Application] – [Utilities] while the SxS memory card is inserted.

When you select [Extensions] under [Software], the SxS Device Driver version appears in the [SxS Memory Card] item, and the SxS UDF Driver version appears in the [sxsudf_fs] item.

To confirm whether the SxS UDF Driver has been installed on the computer, insert a UDF-formatted SxS memory card, select the SxS memory card, and confirm the format for the SxS memory card in [Get Info] of the menu.

“Professional Memory File” will appear if the SxS UDF Driver is installed. If “Universal Disk Format (UDF)” appears, install the supplied SxS UDF Driver. If the SxS memory card is formatted in the FAT format, “MS-DOS (FAT)” appears.

To confirm the XDCAM Drive Software version

Use the XDCAM Drive Software utility software to confirm the software version.

Installing XDCAM Browser

If the MainConcept plug-in software is installed

Purchase or update to the full function version of MainConcept Conversion Pack at the MainConcept Web site. You can access the MainConcept Web site by selecting [About MainConcept Conversion Pack...] in the [XDCAM Browser] menu, and then clicking the URL in the dialog box that appears.

When transferring materials to Final Cut Pro

If you intend to use XDCAM Browser to transfer XDCAM EX/XDCAM materials to Final Cut Pro, Final Cut Pro and a codec supporting the latest XDCAM series must be installed before installing XDCAM Browser. Refer to the ReadMe file for Final Cut Pro versions supported by this application.

Installing from the CD-ROM

- 1 Insert the supplied CD-ROM into the CD-ROM drive of your computer.

The disc icon appears on your desktop.

- 2 Double click the disc icon.

The contents of the CD-ROM appear.

- 3 Double click index.htm.

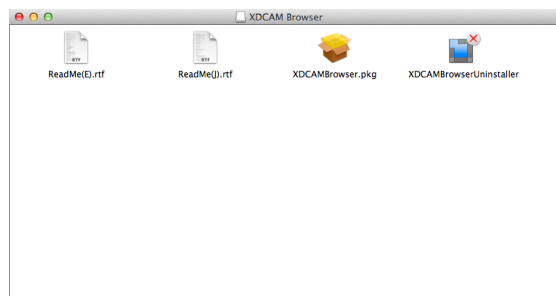
The cover page appears in your browser.

- 4 Select and click [MAC OS X] from the XDCAM Browser Installer.

Finder starts and XDCAMBrowser.dmg appears.

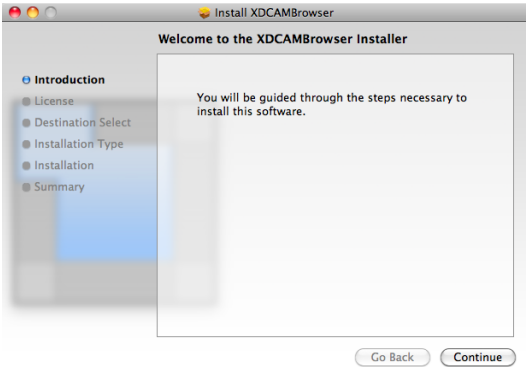
- 5 Double click XDCAMBrowser.dmg.

Finder starts and XDCAMBrowser.pkg appears.



- 6 Double click XDCAMBrowser.pkg.

The installation screen appears.

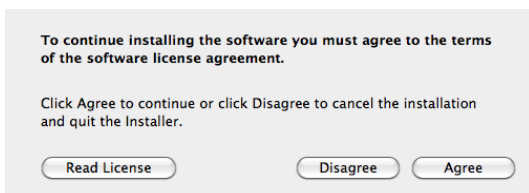


- 7** Click the [Continue] button.

A license agreement screen appears.

- 8** Click the [Continue] button.

The following message appears.



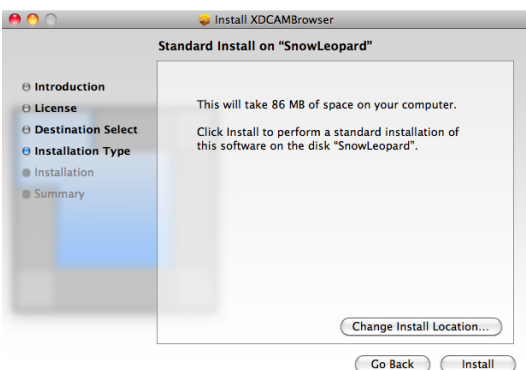
- 9** Click the [Agree] button.

A screen appears in which you can select the installation destination.

- 10** Click the installation destination volume.

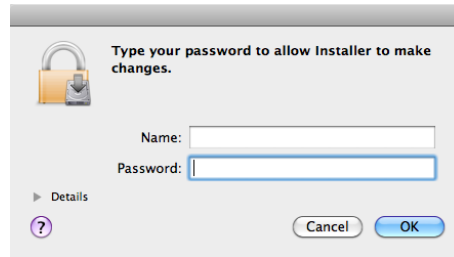
- 11** Click the [Continue] button.

The following screen appears.



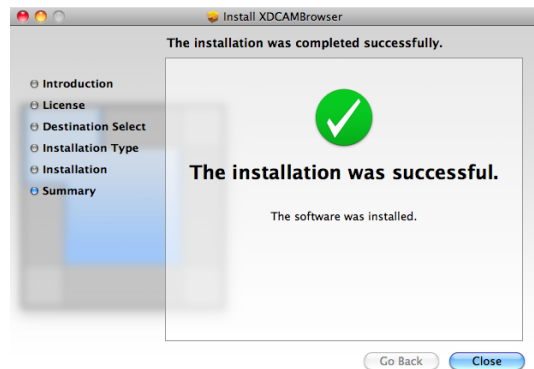
- 12** Click the [Install] button.

An authentication screen appears.



- 13** Enter your name and password, and then click the [OK] button.

The following screen appears when the installation finishes.



- 14** Click the [Close] button to close the dialog.

To uninstall the application

Perform steps 1 to 5 in “Installing from the CD-ROM” (page 13), and double-click XDCAMBrowserUninstaller. When the confirmation message appears, click [OK] to continue.

Note

When you uninstall this software, MainConcept plug-in software and Final Cut Pro plug-ins will also be uninstalled.

Launching and Exiting the Application

See “Installing XDCAM Browser” (page 13) for more information about how to install the application.

Launching the application

Use Finder to open the XDCAM Browser folder in the Applications folder, and double click XDCAM Browser. The application starts, and the operating windows appear.

Note

It is not possible to launch more than one instance of this application at one time.

Exiting the application

Select [Quit XDCAM Browser] from the [XDCAM Browser] menu.

Note

Do not power off the computer while a file operation is still underway. Files may be corrupted. Wait until the operating finishes, or cancel the operation, before powering off.

Media Operations

Handling Professional Disc files

When using an IEEE1394-connected device

When a Professional Disc device is connected via IEEE1394 to a computer on which the FAM Driver is installed, you can handle files using File Access Mode (FAM). You can handle the files stored on the Professional Disc device as you would files stored on a local drive or a network computer.

Notes

- This software does not support stream mode connections for IEEE1394.
For details on use other than in FAM, refer to the operating instructions for the supported device or editing software.
- For details on switching devices to FAM mode (displayed on the device as PC REMOTE) or information on device limitations, refer to the operating instructions for each device.

When using an XDCAM drive

When an XDCAM drive is connected via USB to a computer on which the XDCAM Drive Software is installed, you can handle files stored on the Professional Disc as you would files from a FAM-connected device.

Limitations and restrictions

- Do not use the EJECT button to eject the Professional Disc. Always perform the disc eject operation from the computer.
- Do not unplug an IEEE1394 or USB cables from FAM-connected devices or XDCAM drives without first performing the procedure for safely removing the devices. Doing so may result in unstable operations.
- Some operations may be disabled depending on the file type.

Ending Professional Disc operations

When you are finished with operations, perform the procedure for safely removing devices from your computer before removing the device. Wait until the removal process is complete and verify that the access lamp is out before disconnecting the device.

To remove an IEEE1394-connected device

Click the eject button to the right of the disc icon of the target device in the Finder, or drag the disc icon to the trash icon.

The Professional Disc is ejected, and the FAM connection is disabled.

When the operation is complete, disconnect the IEEE1394 cable if necessary.

To remove an XDCAM drive

Click the eject button to the right of the XDCAM drive icon in the Finder, or drag the disc icon to the trash icon.

When the operation is complete, disconnect the USB cable if necessary.

Handling SxS memory card files

You can access SxS memory cards inserted in devices connected as follows from a computer on which the SxS Device Driver or the SxS UDF Driver (when using UDF format) is installed.

- Connected via the ExpressCard slot on the computer
- Card readers/writers connected to the computer via USB
- XDCAM EX/XDCAM devices connected to the computer via USB

Information recorded for materials stored on an SxS memory card may span multiple files and folders. XDCAM Browser allows you to handle this information and file directories easily, without worrying about structure. However, if you use the Finder to perform operations such as copying clips from the SxS memory card, the information stored with the clip may not be retained. To prevent such occurrences, we recommend performing file operations using supported applications.

Note

For details on switching operation modes or information on device limitations, refer to the operating instructions for each device.

Limitations and restrictions

- Do not perform the following operations while the computer is accessing the SxS memory card.
 - Turn ON/OFF the XDCAM EX/XDCAM device or memory card reader/writer
 - Remove or insert SxS memory cards
 - Disconnect or connect USB cables
 - Change the setting of the write protect switch on an SxS memory card

- If the SxS memory card icon is displayed in the menu bar, do not right click the icon and select the power off option.

Ending SxS memory card operations**When using a card inserted in an ExpressCard slot**

When you are finished with operations, perform the procedure for safely removing devices from your computer before removing the device. Do not disconnect the device until the removal process is complete.

- 1 Drag the SxS memory card icon from the desktop to the trash (eject) icon, or click the eject button to the right of the SxS memory card icon in the Finder.
- 2 Confirm that the SxS memory card icon has disappeared, and remove the card.

Note

Do not select the power off option from the SxS memory card icon displayed in the menu bar.

When using an XDCAM device or memory card reader/writer connected by USB

- 1 Either drag the SxS memory card icon on the desktop to the trash icon, or click the eject button to the right of the SxS memory card icon in Finder.
- 2 Confirm that the SxS memory card icon has disappeared and that the access lamp on the SxS memory card is out, and then remove the card or unplug the USB cable.

Retail Option Functions

Introduction

This section describes the Sony retail option functions included with XDCAM Browser.

For details about the required MainConcept Conversion Pack for format conversion when copying or exporting clips, see “If the MainConcept plug-in software is installed” (page 7 or page 13).

Overview

This application provides the following functions as Sony retail options.

- Writing to BD/DVD (writing to DVD is only available on the Windows version)*
- Creating and editing planning metadata*
- Live logging function*
- Exporting list information about clips/clip lists*
- Configuring essence marks using essence mark lists*
- Displaying acquisition metadata
- Creating AAF files from clip lists (Windows version only)
- Using clip lists to compile proxy AV data and create WMV files (Windows version only)
- Displaying audio level meters
- Adding subclips using essence marks

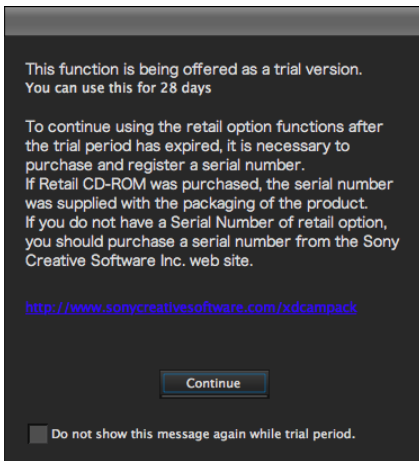
“[Trial]” is displayed after the item name for each of the retail option function menu items.

Although the retail option functions marked with asterisks (*) above can be used on a trial basis for 30 days after the initial installation, they will be disabled after the trial period expires unless you purchase and register a serial number for either the XDBZ-AD1 Professional Application Software (advanced pack for XDCAM Browser) or the retail options. However, data created during the trial period can be used without change after the trial period expires.

Notes

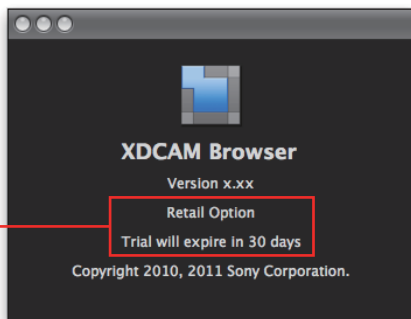
- In order to use the retail option functions after the trial period, it is necessary to register a serial number using an Internet connection. Even if the target computer for the serial number cannot connect to the Internet, you can still register by obtaining an authentication code using another computer that can connect to the Internet.
- A serial number and an authentication code are both required for each computer running this application.

During the trial period, the following dialog appears each time you use a retail option function notifying you when the trial period will expire.



To continue using the retail option functions after the trial period has expired, it is necessary to purchase and register a serial number. After registering a serial number, "[Trial]" is no longer displayed after the retail option function menu items.

You can check the status of whether the retail option functions can be used or not in the version information dialog for this application. Select [About XDCAM Browser...] from the [Help] menu on Windows, or [About XDCAM Browser] from the [XDCAM Browser] menu on Mac OS to display the following dialog. (The following dialog is for Mac OS X. The same information is also displayed for Windows.)



The dialog displays the number of days left during the trial period, and displays "Trial expired." after the trial period has expired.
The dialog displays the registered serial number after a serial number has been registered.

Purchasing a Serial Number

Note

A purchased serial number is required in order to activate the retail option functions.
Please store in a safe location.

If XDCAM Browser was supplied on CD-ROM with an XDCAM Device or downloaded from the website

Purchase a serial number from the Sony Creative Software Inc. web site below.
<http://www.sonycreativesoftware.com/>

Note

An Internet connection is required to access the Sony Creative Software Inc. website to purchase a serial number.

If XDBZ-AD1 (advanced pack for XDCAM Browser) was purchased

The serial number is provided on an accompanying sheet of paper.

Registering a Serial Number

You register the obtained serial number on the computer that will use the retail option functions.

Notes

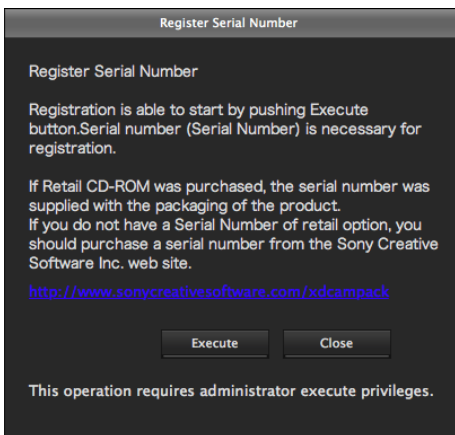
- An Internet connection is required to access the Sony Creative Software Inc. website to register a serial number. If the computer that will use the retail option functions cannot connect to the Internet, you will need another computer that can access the website.
- This operation requires administrator execute privileges.
- The following dialogs are for Mac OS X. The same information is also displayed for Windows.

- 1 Launch XDCAM Browser (this application) on the computer that will use the retail option functions.

For details, see “Launching the application” (page 8) for Windows or “Launching the application” (page 15) for Mac OS.

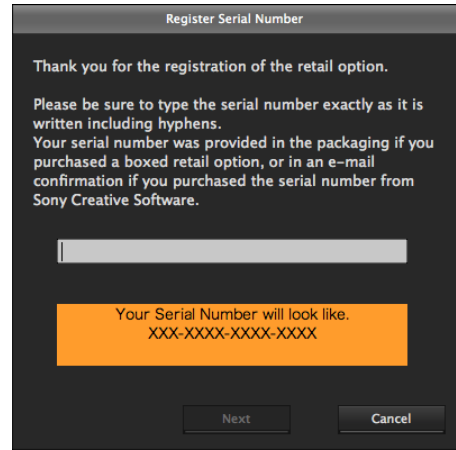
- 2 Select [Register Serial Number] from the [Help] menu on Windows or the [XDCAM Browser] menu on Mac OS.

The [Register Serial Number] dialog appears.



- 3 Click [Execute].

The following screen appears.



Note

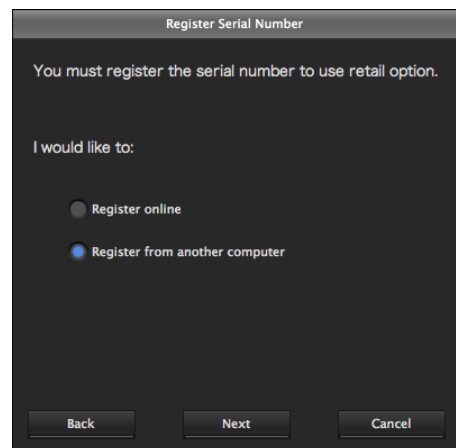
On Windows XP, an error message will appear if you execute without administrator privileges. Re-execute with administrator privileges.

On Windows Vista, Windows 7, or Mac OS, a dialog appears asking whether you want to execute with administrator privileges, then the operation continues.

- 4 Enter the serial number obtained in “Purchasing a Serial Number” (page 18) in the empty field, then click [Next].

Enter the number as is, including hyphens.

The following screen appears.



The procedure divides into two from this point.

If you can access the Sony Creative Software Inc. website from the target computer:

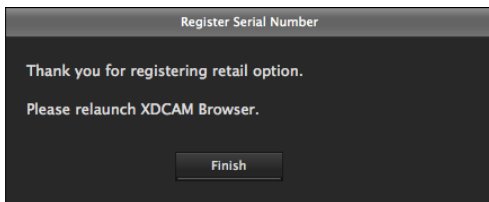
Continue the procedure from the next step.

If you cannot access the Sony Creative Software Inc. website from the target computer:

Follow the procedure described in “If you cannot access the Sony Creative Software Inc. website from the target computer:” (page 20).

- 5** Select the [Register online] option, then click [Next].

A message indicating that the serial number is being registered appears, and registration begins. If the number is registered successfully, the following screen appears.



- 6** Click [Finish].

The serial number registration finishes.

- 7** Exit XDCAM Browser, then relaunch the application.

After relaunching the application, you will be able to use the application without “[Trial]” displayed after the retail option function menu items.

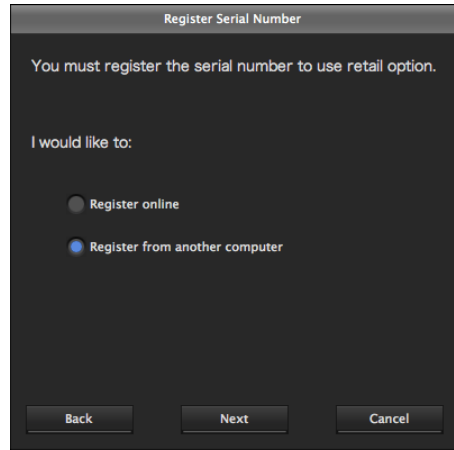
If you cannot access the Sony Creative Software Inc. website from the target computer:

It will be necessary to obtain an authentication code apart from the serial number using a computer that can access the Sony Creative Software Inc. website. Then you enter the authentication code into the computer that will use the retail option functions in order to activate them.

The process flow is as follows.

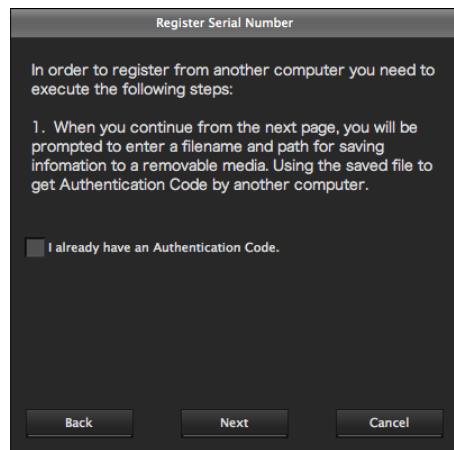
- (1) On the computer that will use the retail option functions, create a file for authentication that contains information about the computer.
- (2) Access the Sony Creative Software Inc. website from another computer, and obtain an authentication code using the file created in step (1).
- (3) Enter the authentication code into the computer that will use the retail option functions.

- 1** Execute steps **1** to **4** in “*Registering a Serial Number*” (page 19) to display the following screen.



- 2** Select the [Register from another computer] option, then click [Next].

The following screen appears.

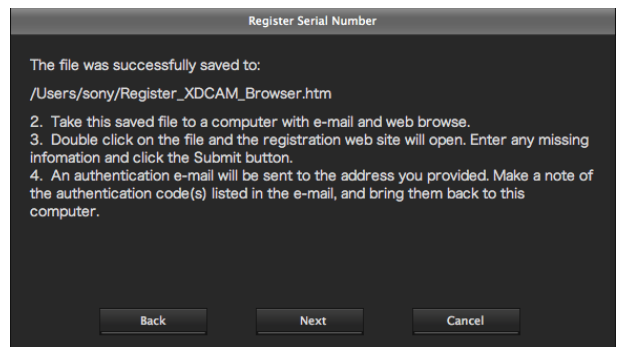


- 3** Insert USB memory or other removable media, then click [Next].

A dialog for saving the file appears.

- 4** Click [Save].

An htm file for authentication is created and saved, then the following screen appears.



- 5 Copy the htm file for authentication to the removable media and transfer it to a computer that can access the Sony Creative Software Inc. website.

You can click [Cancel] to close the [Register Serial Number] dialog once this point is reached if the following process will take time or for other reason.

- 6 On the computer that can access the Sony Creative Software Inc. website, double-click the htm file for authentication.

The computer automatically accesses the Sony Creative Software Inc. website and displays the authentication webpage.

- 7 Enter the required information on the authentication webpage, then click [Submit].

The authentication process runs on the Sony Creative Software Inc. website and then displays the authentication code on the screen.

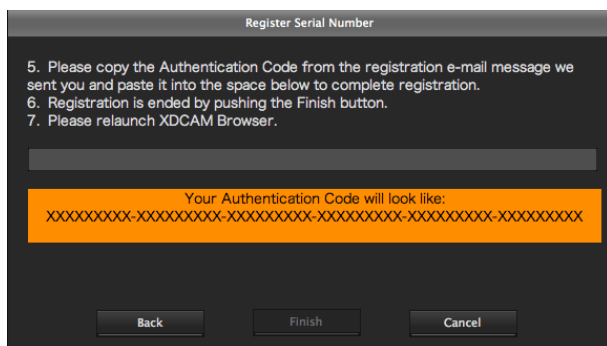
The same code is also sent to the entered email address.

- 8 Make a note of the authentication code or save it to removable media as a text file and transfer it to the computer that will use the retail option functions.

- 9 On the computer that will use the retail option functions, click [Next] in the [Register Serial Number] dialog.

If you closed the [Register Serial Number] dialog in step 5, reopen the dialog, select the [Register from another computer] option, and place a check mark in the [I already have an Authentication Code] check box, then click [Next].

The following screen appears.



- 10 Enter the obtained authentication code in the empty field or copy and paste it from a text file, then click [Finish].

Enter the number as is, including hyphens.

The serial number registration finishes.

- 11 Exit XDCAM Browser, then relaunch the application.

After relaunching the application, you will be able to use the application without “[Trial]” displayed after the retail option function menu items.

