

KENWOOD

WD-ZS10

**PROGRAMMING SOFTWARE
USER GUIDE**

JVCKENWOOD Corporation

1.1 CONTENTS

1	INTRODUCTION	1	4	USING THE APPLICATION	12
1.1	CONTENTS	1	4.1	Device Registration	12
1.2	How to Read This User Guide	2		Wireless Registration of Device	12
	Symbols Used	2		Wired Registration of Device	16
	Content of This User Guide	2	4.2	System Setup	25
1.3	Operating Environment	2		Basic Operations	25
	Compatible PCs	2		Importing and Writing System Setup	29
	Precautions	3		WD-K10PBS (Base Station Mode) Setup	32
1.4	Programming Software WD-ZS10	3		WD-K10PBS (Transceiver Mode)/ WD-K10TR Setup	40
				WD-K10BS Setup	46
2	PREPARATION	4	4.3	Log Display	52
2.1	Connection	4		Opening Log Display	52
2.2	Installation Procedures	5	4.4	Connection Status Check	53
	Installing Applications	5		Opening Connection Status Display	53
	Installing the USB Driver	9	4.5	Wireless Settings Update	56
2.3	Uninstallation Procedures	9		Writing Settings	57
3	STARTING THE APPLICATION	10	4.6	Firmware Update	62
3.1	Starting Programming Software WD-ZS10	10		Opening Firmware Update Screen	62
3.2	Launcher Dialog	11		Updating Firmware Via Wired	63
				Updating Firmware Via Wireless	66
			4.7	Turning On/Off the Device Power	70
				Turning On/Off the Power of WD-K10BS	70
				Turning On/Off the Power of WD-K10PBS/ WD-K10TR	71
5	OTHERS	72	5.1	Troubleshooting	72

1.2 How to Read This User Guide

Symbols Used



Precautions

Describes precautions concerning the operation of this product.



Note

Describes reference information, such as functions and usage restrictions of this product.

Content of This User Guide

- All rights reserved by JVC KENWOOD Corporation. Unauthorized duplication or reprinting of this user guide, in whole or in part, is strictly prohibited.
- Other product and company names included in this user guide are trademarks and/or registered trademarks of their respective companies. Marks such as ™ and ® have been omitted in this user guide.
- Illustrated designs, specifications and other contents of this user guide are subject to change for improvement without prior notice.
- For details on setup terms and setup methods, please refer to the Instructions or Design Manual for the DECT Intercom System WD-K10 series.
- Unless otherwise stated, screen shots of Windows 7 are used in the description of this user guide.

1.3 Operating Environment

The programming software WD-ZS10 has been verified to run on the following PC environments. The operating environment is accurate as at September 2016. For the latest operating environment, please check with the KENWOOD dealer.

Compatible PCs

OS:	Windows 7 Windows 8.1 Windows 10 Microsoft .NET Framework 4.5 or 4.6 *For Windows 8.1, run the software by switching from modern UI to desktop screen. *For Windows 10, use the software in desktop mode.
CPU, memory:	Environment recommended in each OS
Display:	1024 x 768 resolution or higher
HDD:	HDD capacity of 50 MB and above is required for installation of applications
Interface:	USB PC side: Type A WD-K10PBS/WD-K10TR/WD-K10BS side: Micro B



Note

- PC specifications mentioned are guidelines for optimal application usage. We do not guarantee the operation. PCs that satisfy the operating environment conditions may not operate optimally depending on your usage situation.
- Please install Microsoft .NET Framework from Microsoft's website.
- Microsoft and Windows are either registered trademarks of Microsoft Corporation in the United States and/or other countries.

Precautions

Login to OS

Set user rights to Administrator during use of applications.

Starting Up Applications

Do not switch users when starting up applications.

Using Applications

Do not use the Power Save or Resume functions in PCs in which the programming software WD-ZS10 has been installed. Communication status and communication data may become unstable. (The Power Save and Resume functions may be named differently depending on your PC.)

1.4 Programming Software WD-ZS10

The programming software WD-ZS10 is an application to configure various settings and to manage connection for the DECT Intercom System WD-K10 series.

- It allows you to import and change system settings for each device, and save these settings in a file.
- Settings for the connected device can be written.
- Other devices can be registered as a sub unit to the connected device.
- Device firmware can be updated.
- Applicable models:
 - PORTABLE BASE WD-K10PBS
 - TRANSCEIVER WD-K10TR
 - BASE STATION WD-K10BS

Note

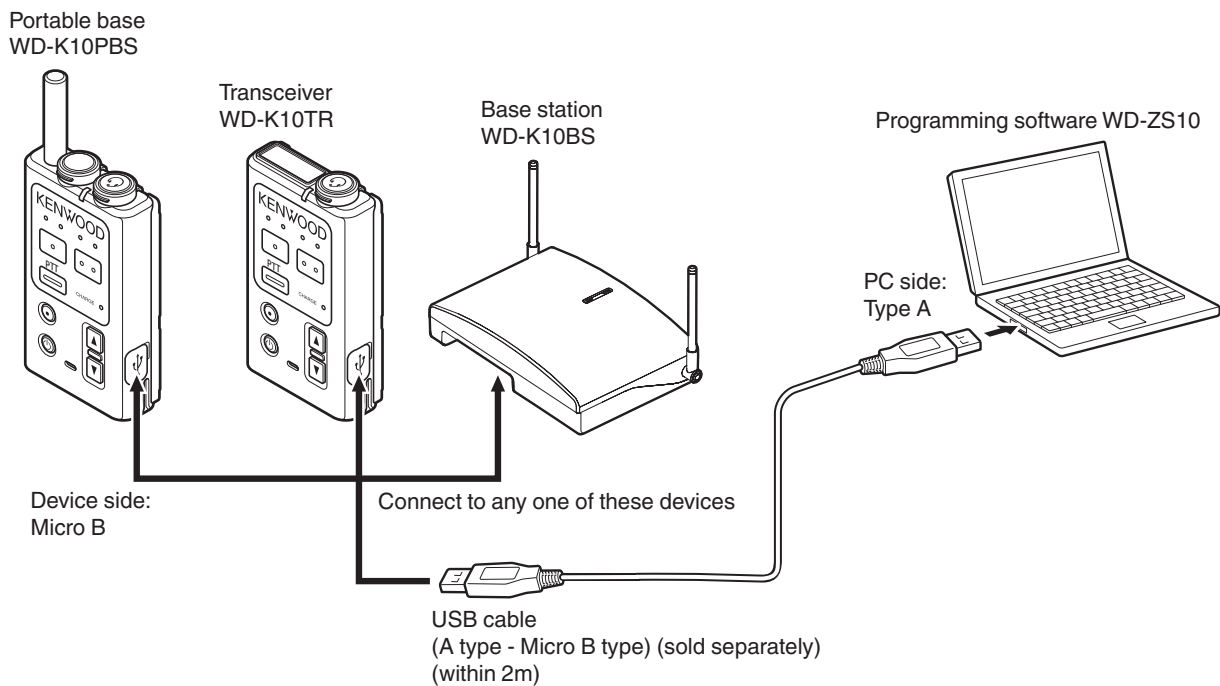
- In this user guide, WD-K10PBS, WD-K10TR, and WD-K10BS are indicated as “device”.
- Please use the latest version for the programming software WD-ZS10.

2.1 Connection

Connect the PC installed with the programming software WD-ZS10 and a device (WD-K10PBS, WD-K10TR, WD-K10BS) of the DECT Intercom System WD-K10 series.

Note

- Communication is disabled if two or more devices are connected to the PC. Connect only one device during communication.



Precautions

- Be sure to attach the device cap on WD-K10PBS and WD-K10TR after removing the USB cable from the data setup devices.
When attaching the device cap, push it in and ensure that it is not loose.
Loose caps may affect the waterproofing performance.

【OK】



【NG】



2.2 Installation Procedures

To install or uninstall the programming software WD-ZS10, log in to the PC as a user with Administrator rights. Refer to the help of your OS for setting Administrator rights and user accounts.

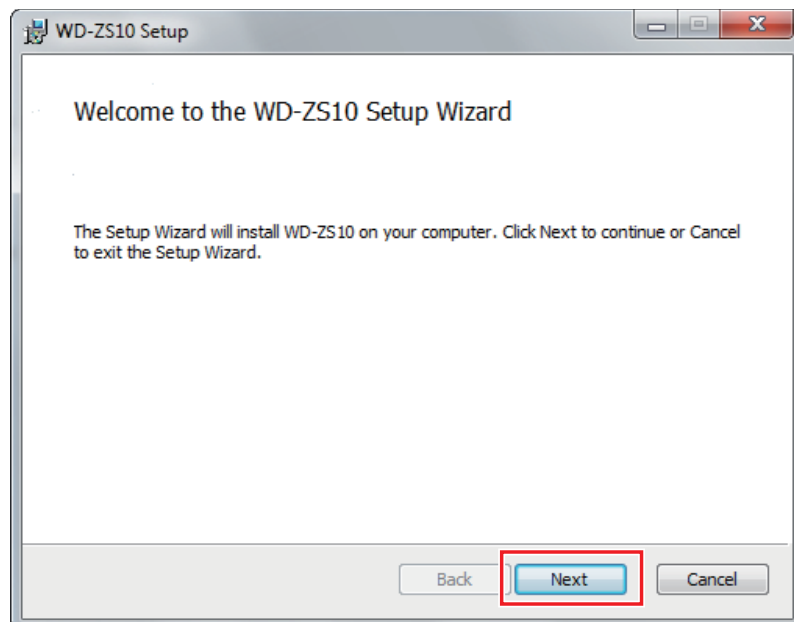
Note

- Before installing, uninstall the antivirus utility. The antivirus utility may affect the installation of WD-ZS10. A personal firewall function may be installed in Windows 7, Windows 8.1, Windows 10, and antivirus software. If this function is set to "ON", the software may not be installed properly. Set the function to "OFF".

Installing Applications

1 Start the installer and click [Next].

Double-click "Setup.msi" in the WD-ZS10 folder from the downloaded "WD-ZS10" file set to start the installer.



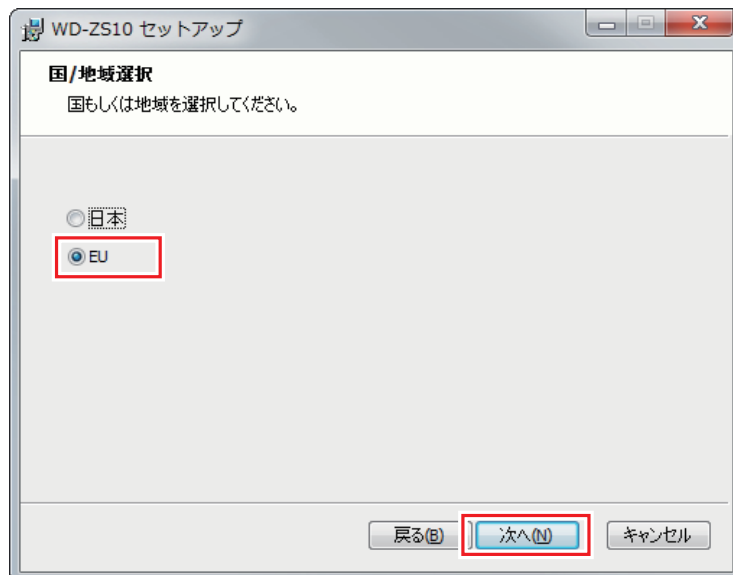
2 Select a country/region.

Select a country/region where WD-ZS10 is to be used.

The available options are “EU” and “Japan”.

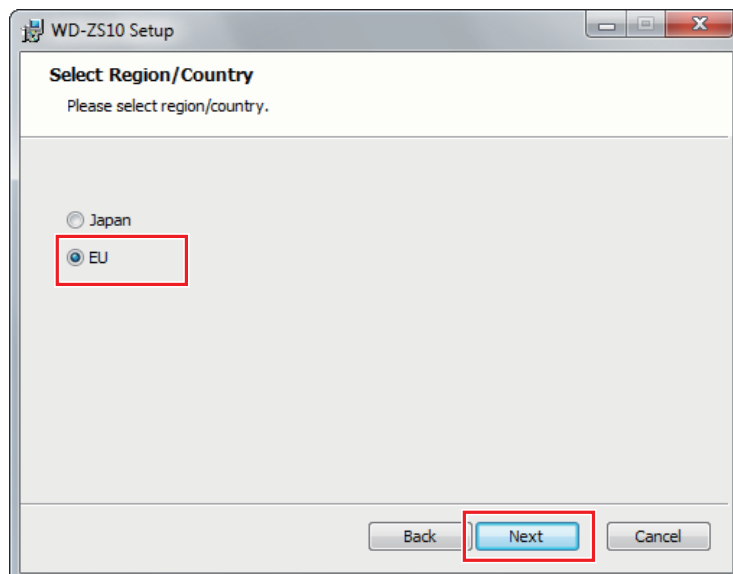
If the OS language is Japanese, the Region/Country selection screen is displayed in Japanese. Otherwise, the screen will be displayed in English.

[When OS language is Japanese]



Select “EU” from “Region/Country” and click [Next].

[When OS language is not Japanese]



Select “EU” from “Region/Country” and click [Next].

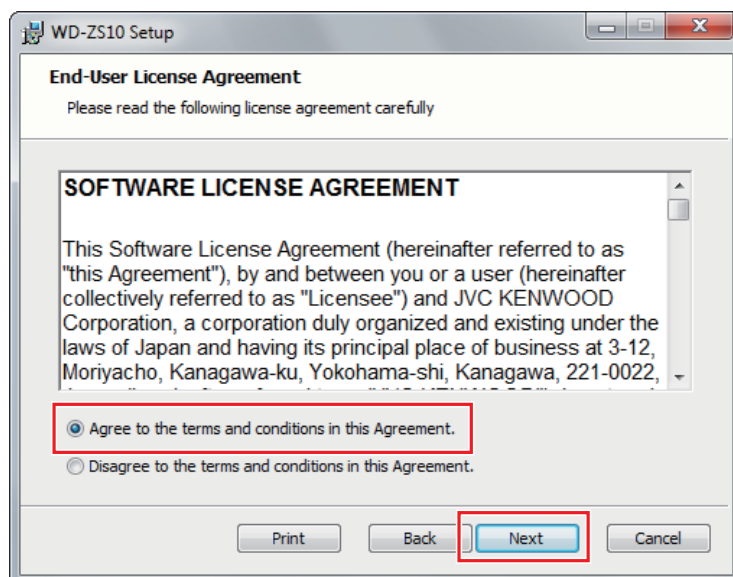
Precautions

- If “Japan” is selected in the Region/Country selection screen, Japanese-denoted applications used in Japan will be installed.
- You are not allowed to switch the display language after installation.
Reinstall the application if you wish to switch the display language.
- You cannot install both Japanese and English versions of WD-ZS10 on one PC.

3 Check the “SOFTWARE LICENSE AGREEMENT”.

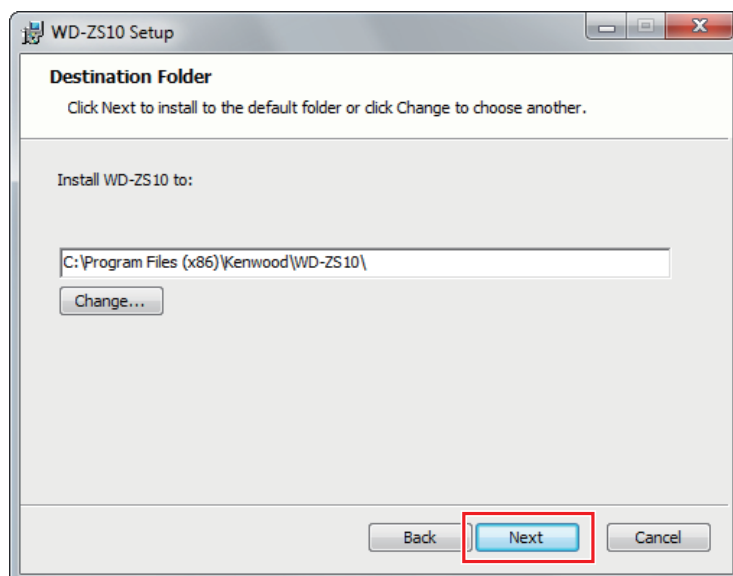
To agree, select [Agree to the terms and conditions in this Agreement.] and click “Next”.

To disagree, select [Disagree to the terms and conditions in this Agreement.] and click “Cancel” to cancel installation.



4 Select the folder for installation and click [Next].

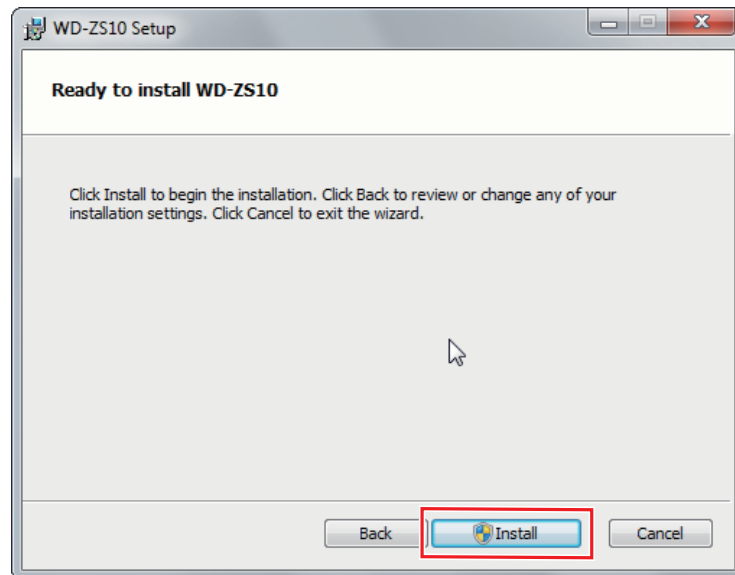
To change a folder, click [Change] and specify the folder.



5 Click [Install].

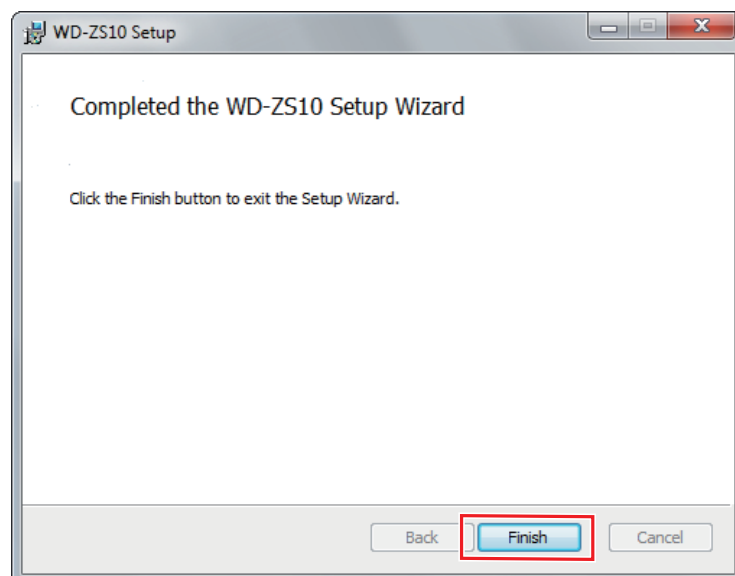
Installation begins.

To change the entered contents, click [Back] and change the settings.



6 Click [Finish].

Installation is complete.



Installing the USB Driver

When a device of the DECT Intercom System WD-K10 series is connected to a PC that is turned on, the required driver will be automatically installed.

Connect properly according to the device to be used.

[on page 5](#)

2.3 Uninstallation Procedures

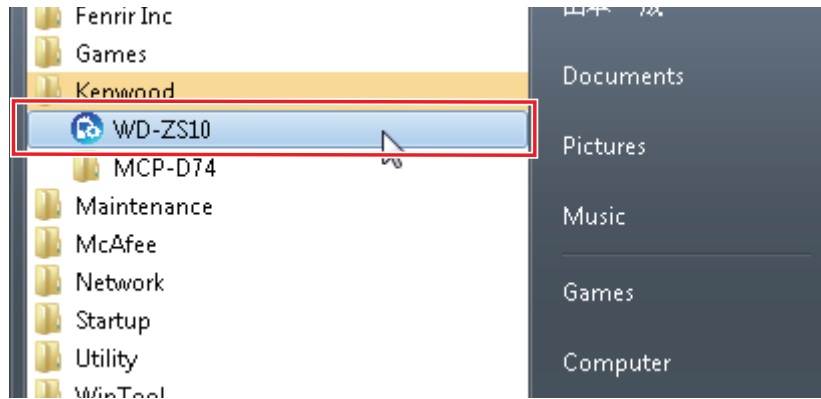
Follow the procedures below to uninstall the programming software WD-ZS10.

- 1** Select “Programs and Features” from the Windows control panel.
- 2** Select “WD-ZS10” from the list of currently installed programs to uninstall.
- 3** Check the uninstallation message and click [OK].

3.1 Starting Programming Software WD-ZS10

1 Click in the following order at the Start Menu: “Start”-”All Programs”-”Kenwood”.

2 Click “WD-ZS10”.



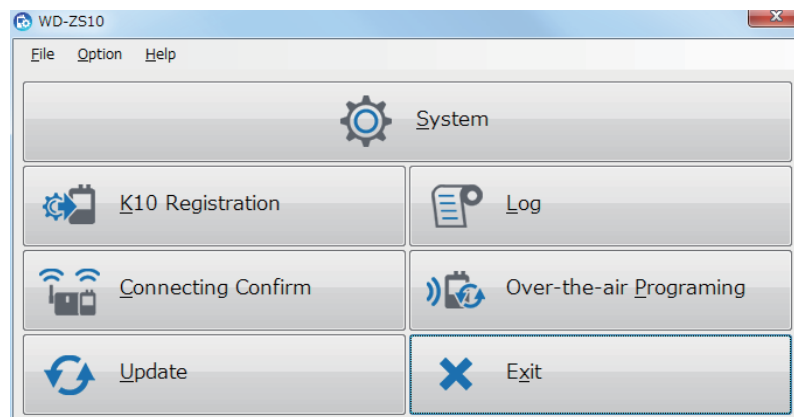
*Screen shots are from Windows 7.

A KENWOOD logo display screen appears and the launcher dialog will start up.

[KENWOOD logo display screen]

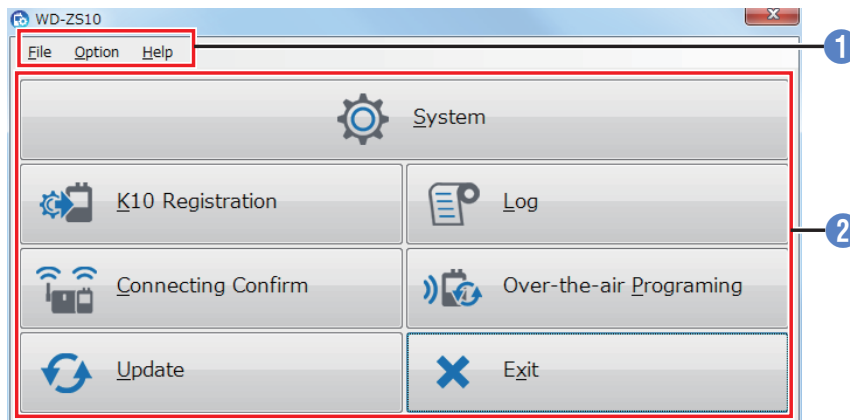


[Launcher dialog]



3.2 Launcher Dialog

Launcher Dialog Screen



1 Menu

The following functions are available in the menu bar at the top of the launcher dialog.

Menu		Content
File	Exit	Exits the application.
Option	Service Mode	This is a service menu. It is not used normally.
Help	Help	Displays the user guide (this manual) of the application.
	About WD-ZS10	Displays the version information of the application.

2 Tab

Click a key in the launcher dialog to activate various functions and setup screens of WD-ZS10.

Tab	Function	Reference Page
System	Starts System setup.	on page 25
K10 Registration	Performs wired or wireless registration of devices.	on page 12
Log	For checking the event or error logs.	on page 52
Connecting Confirm	For checking information of the currently connected base unit and sub unit connected to each slot.	on page 53
Over-the-air Programming	Updates settings of a sub unit in wireless communication.	on page 56
Update	Updates the firmware of the device.	on page 62
Exit	Exits WD-ZS10.	—

4.1 Device Registration

To operate the DECT Intercom System WD-K10 series, you must register the information of the other party in communication with the respective devices (for a base unit, other party refers to the sub unit; for a sub unit, other party refers to the base unit).

There are two types of registration methods: “Wireless Registration” and “Wired Registration”.

When constructing the system, perform “sub unit registration to base unit” first, followed by “base unit registration to sub unit”.

This section describes the registration method of devices that use WD-ZS10.

Note

- You can register a device by using only the device and not WD-ZS10. For details, please refer to the instruction manual of each device.
- Perform device registration for each device one at a time.

Wireless Registration of Device

Use wireless communication to register the information of a sub unit to a base unit (WD-K10PBS (Base Station Mode) or WD-K10BS) that is connected to a PC.

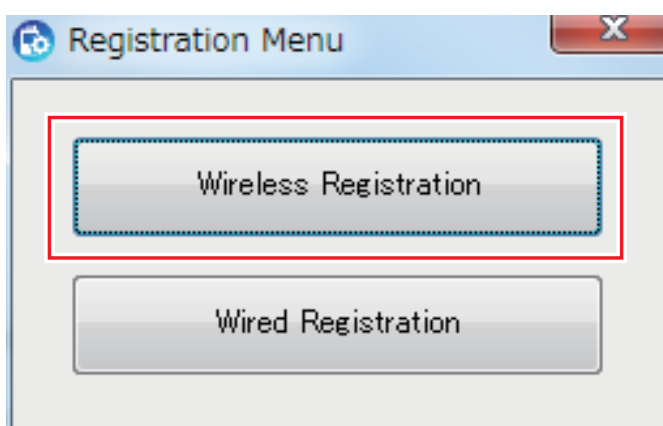
Note

- A base unit cannot be registered to a sub unit via Wireless Registration in WD-ZS10. To register a base unit to a sub unit, use Wired Registration ([on page 16](#)) or perform sub unit registration using a device.
- If a device is in All Call mode, sub unit registration via wireless communication is not allowed.

1 Click “K10 Registration” in the launcher dialog.

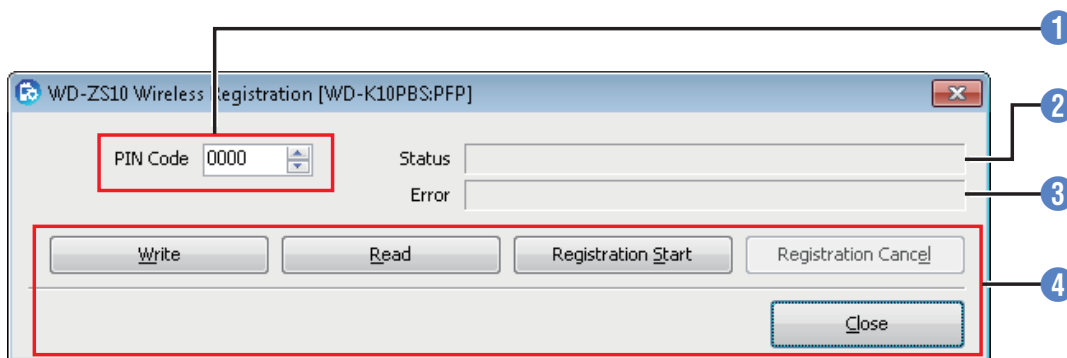
The Registration Menu opens.

2 Click [Wireless Registration].



The Wireless Registration screen opens.

Wireless Registration Screen



1 PIN Code

This is a password to prevent unauthorized third-party usage of a device. The PIN code of the device connected to the PC will be imported automatically and displayed. You can edit and write the PIN code to the device.

Note

- Enter any 4-digit number for the PIN code.
- Click [Write] to write the settings to the device.

2 Status

The status during the registration of a device is displayed.

3 Error

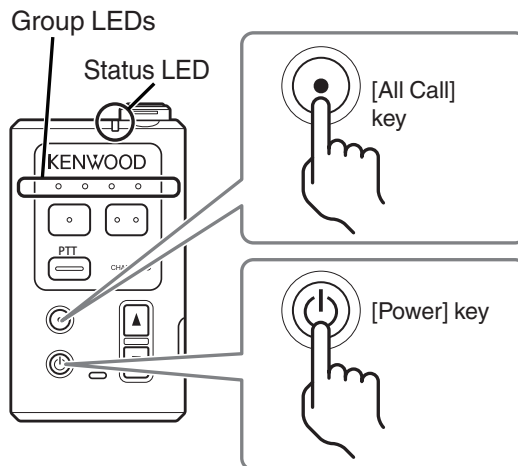
When an error has occurred during the registration of a device, an error message is displayed.

4 Operation Keys

Key	Content
Write	Writes the edited PIN code to the connected device.
Read	Imports the PIN code of the connected device.
Registration Start	Starts device registration for the connected device.
Registration Cancel	Stops device registration.
Close	Closes the Wireless Registration screen.

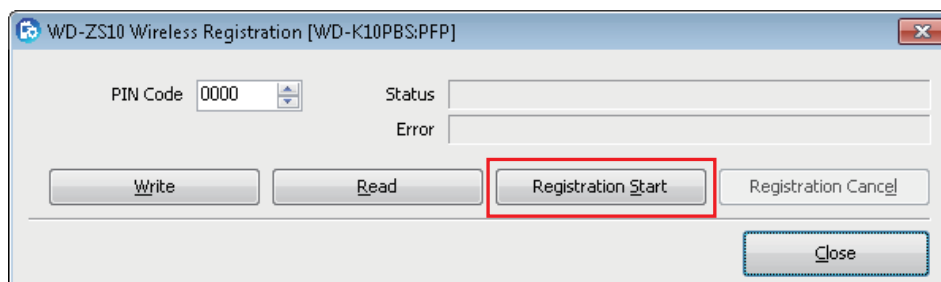
3 Activate the registration mode of the sub unit to be registered.

While pressing the [All Call] key of the sub unit, press and hold the [Power] key. The Status LED lights up in green. Continue to press and hold until all the Group LEDs blink. This activates the registration mode.



4 Click [Registration Start] at the Wireless Registration screen.

The base unit automatically switches to wireless registration mode. Device registration begins.



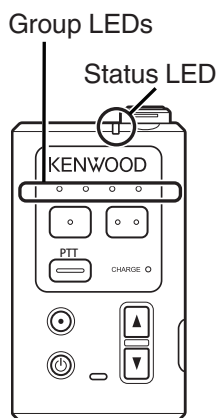
When registration is successful:

The Status LED of the sub unit lights up in green and all Group LEDs light up.

When registration has failed:

The Status LED of the sub unit lights up in green but all Group LEDs do not light up.

Turn off the power of the device. Return to step 3 and register again in registration mode.

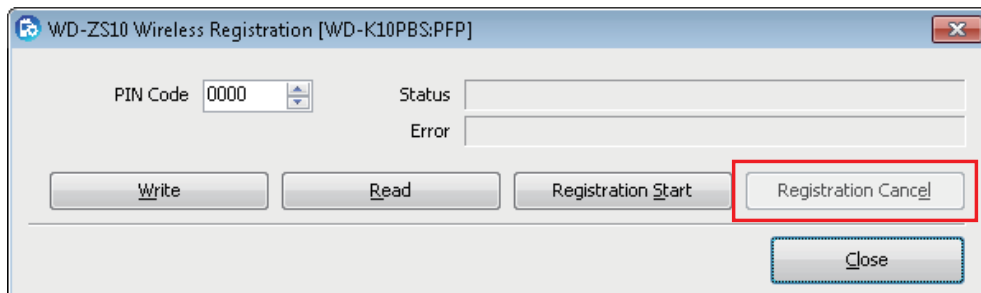


Note

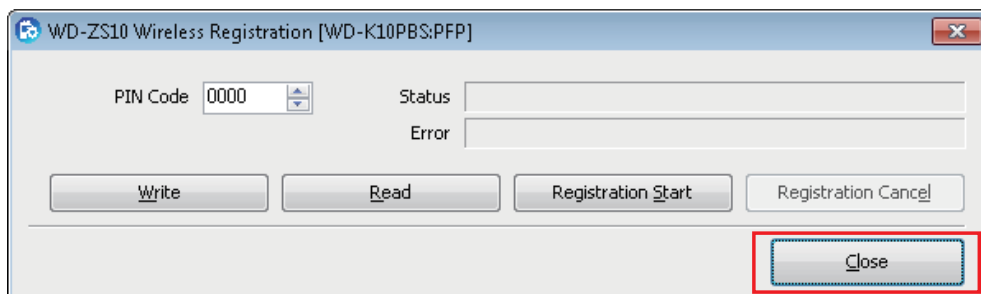
- To stop registration midway, click [Registration Cancel].

5 If registration of all devices is successful, click [Registration Cancel] at the Wireless Registration screen.

This stops the registration.

**6** Click [Close].

Registration is complete.



Wired Registration of Device

From the list of devices that has been imported in WD-ZS10 and where base unit and sub unit are connected to a PC, register a sub unit to a base unit and vice versa. You can also delete devices from the list.

Note

- Wired registration is useful when radio signals are poor or when they are not available.
- Up to 6 base units can be registered to a sub unit. When constructing a system to run multiple base units, you can connect a sub unit to a designated base unit every time, by matching the number sequence displayed in the Terminal List of “K10 Registration” with the numbers in “Base Station Select” of System.
- A sub unit cannot be registered to a sub base unit of a base link system. Register the sub unit to a main base unit.
- A base unit cannot be registered to another base unit, and a sub unit to another sub unit.

1 Connect a sub unit to a PC.

2 Click “K10 Registration” in the launcher dialog.

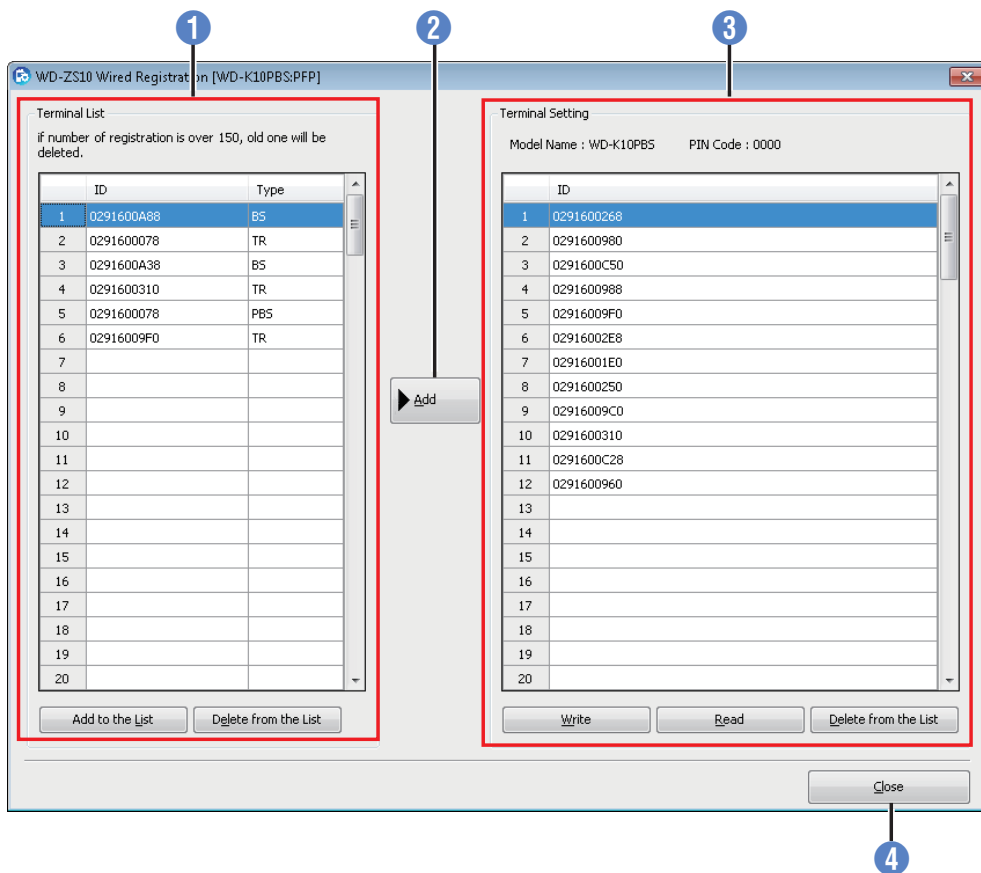
The Registration Menu opens.

3 Click [Wired Registration].



The Wired Registration screen opens.

Wired Registration Screen



1 Terminal List

Information for up to 150 devices that were previously connected to the PC and imported in WD-ZS10 is displayed. You can add a selected device to the “Terminal Setting” list.

Item	Content
ID	The device ID is displayed. Click on title cell “ID” in the Terminal List to sort the list in the order of the IDs.
Type	The type of device is displayed. PP (sub unit)/FP (base unit (base station))/PFP (base unit)
Add to the List	Registers a device connected to the PC in the “List of Devices”.
Delete from the List	Select the ID of a displayed device and delete from the list. (Can make multiple selections.) A confirmation screen appears before deletion.

2 [Add] key

The selected device in the “Terminal List” will be added to the “Terminal Setting” list.

3 Terminal Setting

The information of the base unit or sub unit that is registered in the device connected to a PC is displayed.

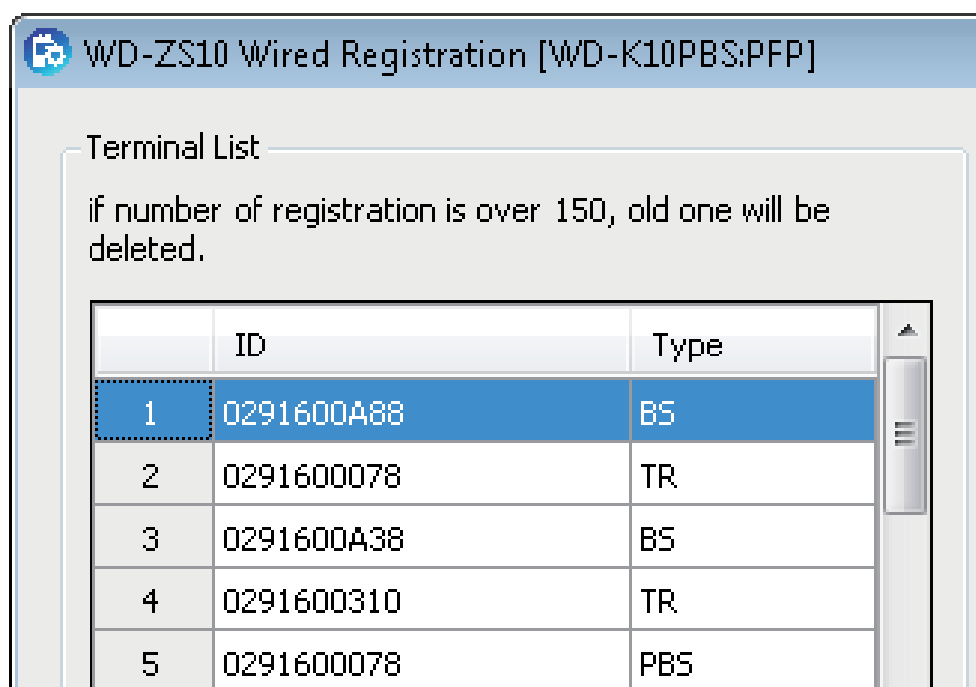
Item	Content
Model Name	The model name of the device connected to a PC is displayed.
PIN Code	The PIN code of the device connected to a PC is displayed.
ID	The device ID is displayed.
	When a base unit is connected: The IDs of up to 108 registered sub units are displayed.
	When a sub unit is connected: The IDs of up to 6 registered base units are displayed.
	Device IDs are displayed in the order of registration. Click on the title cell "ID" to sort the IDs in ascending, descending or ID registration order.
Write	This writes the content of the edited "Terminal Setting" list to the device that is connected to a PC.
Read	This imports settings from the device connected to a PC. The model name, PIN code and "Terminal Setting" list contents will be updated.
Delete from the List	This deletes a selected device from the list.

4 [Close] key

This closes the Wired Registration screen.

4 Check that the sub unit ID is registered in the "Terminal List" in the Wired Registration screen.

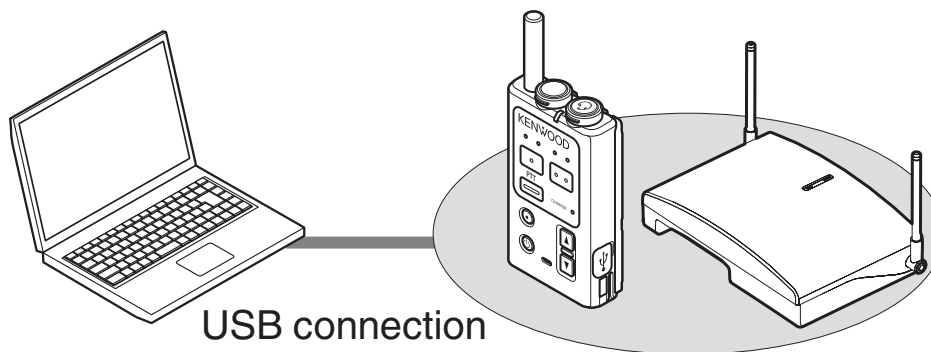
The sub unit ID is type PP.



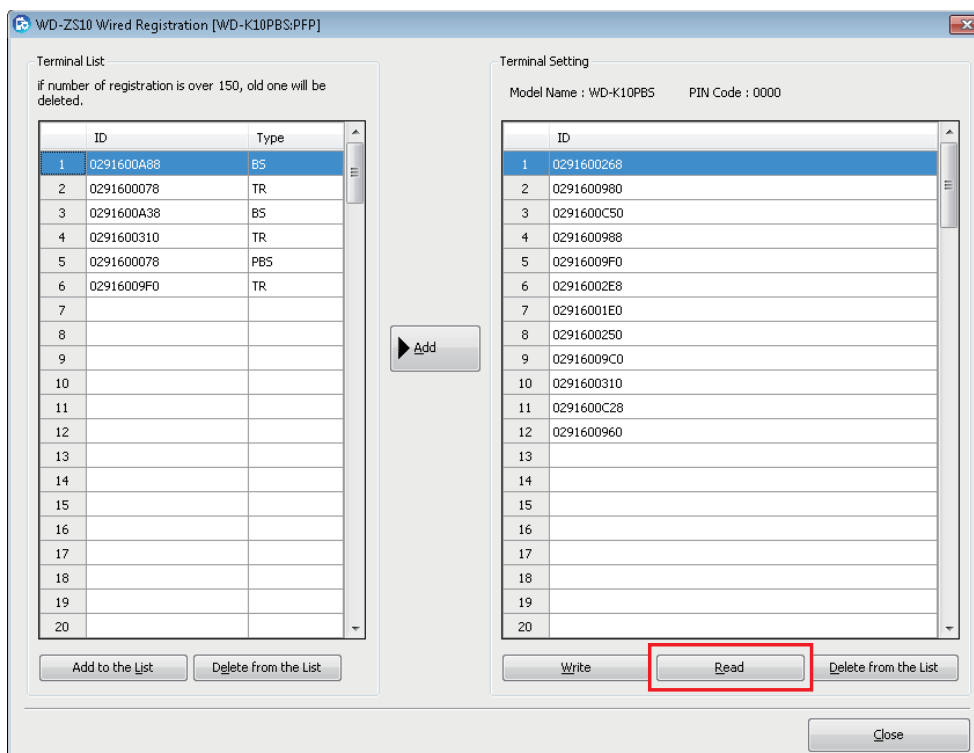
Note

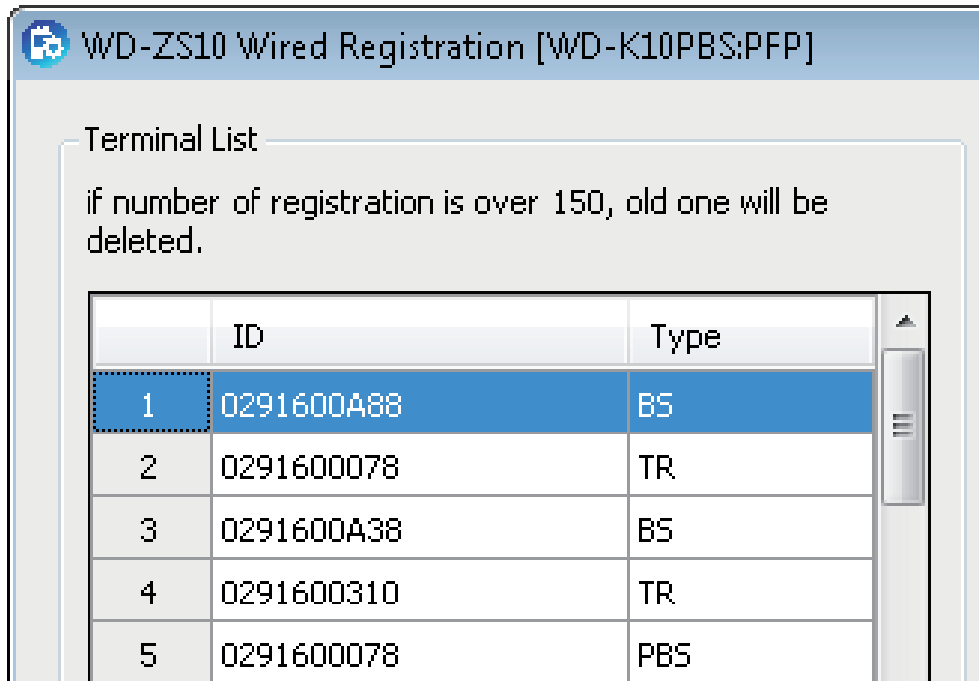
- Registration of a sub unit ID to WD-ZS10 needs to be performed only once.

5 Connect a base unit to the PC.



6 Click [Read] in the Wired Registration screen.



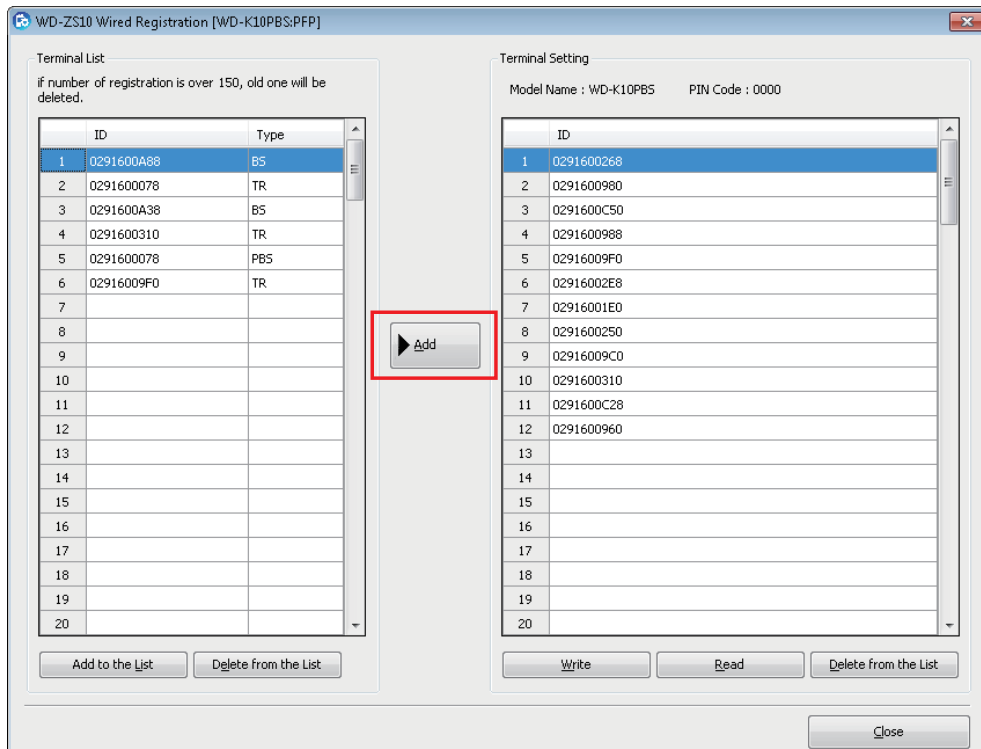
7 Select the ID of the sub unit to be registered from the “Terminal List” in the Wired Registration screen.

The screenshot shows a software interface for "WVD-ZS10 Wired Registration [WVD-K10PBS:PFP]". Below the title bar, there is a section titled "Terminal List" with a warning message: "if number of registration is over 150, old one will be deleted." Below this message is a table with three columns: an index, "ID", and "Type". The first row of the table is highlighted in blue, indicating it is selected. The table contains five rows of data.

	ID	Type
1	0291600A88	BS
2	0291600078	TR
3	0291600A38	BS
4	0291600310	TR
5	0291600078	PBS

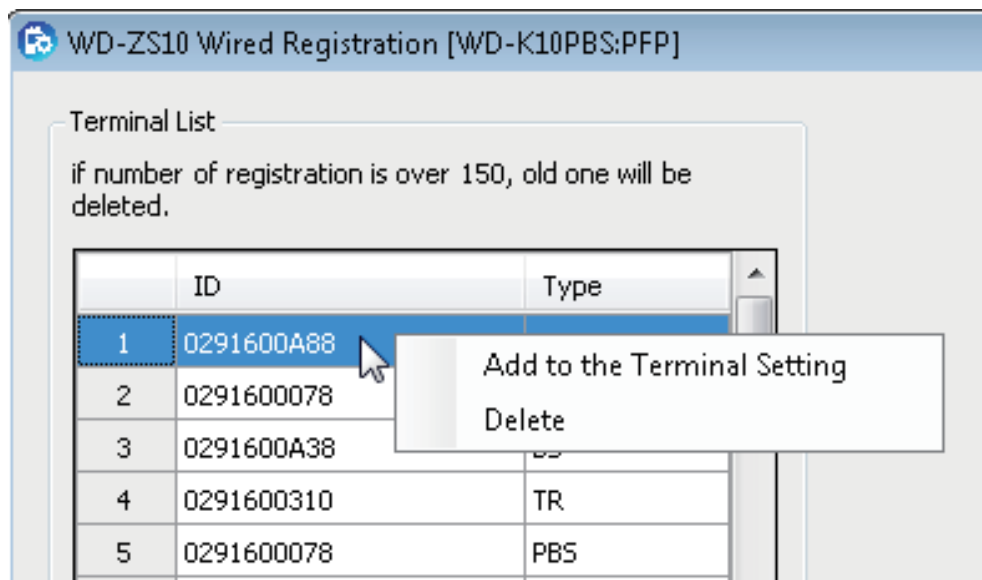
8 Click [Add] to add the device to the “Terminal Setting” list.

The ID of the selected sub unit is added to the “Terminal Setting” list. To add more devices that have been registered, press the [Add to the List] key in the “Terminal List”, and repeat steps 5 to 6.



Note

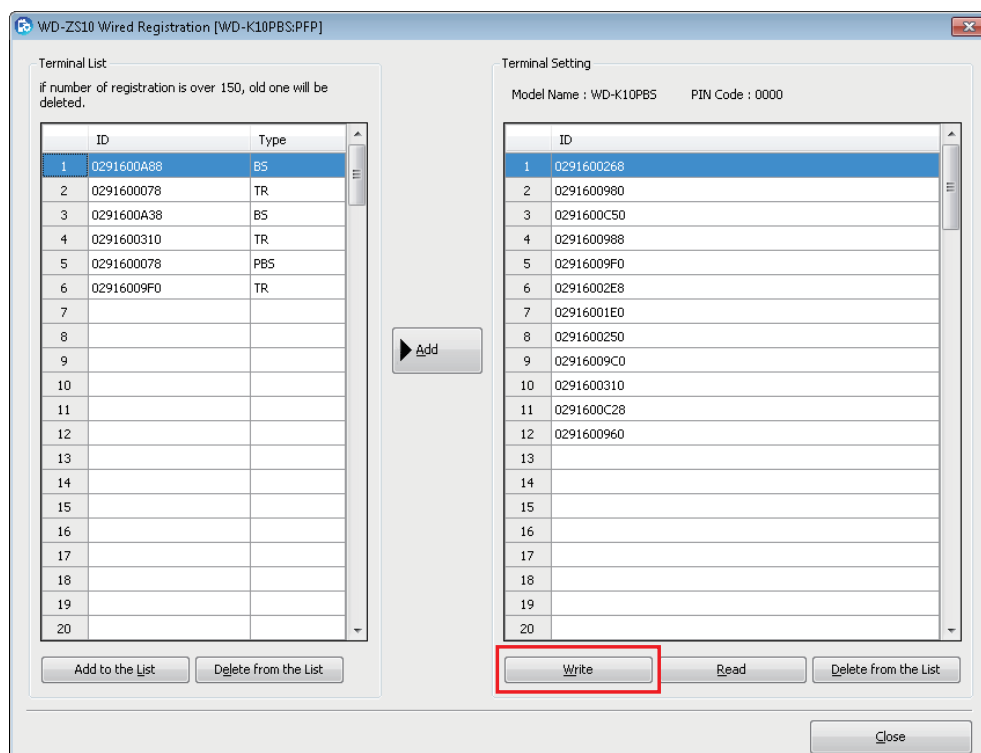
- Drag-and-drop the ID of the selected device, or right-click on the ID of the selected device and click “Add to the Terminal Setting” to add the device to the “Terminal Setting” list.



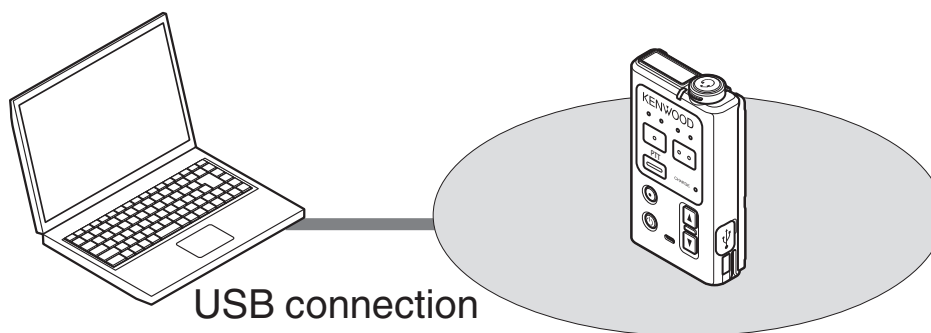
- IDs of sub units that have been registered to the “Terminal Setting” list cannot be added.

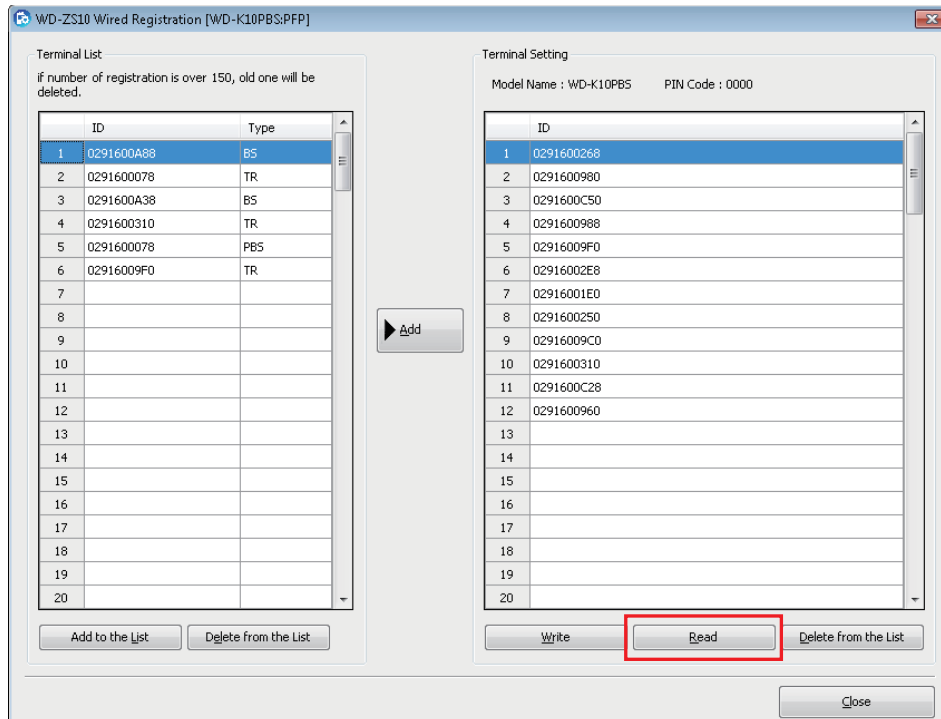
9 Click [Write].

The edited information of the sub unit will be written to the connected base unit.



10 Connect a sub unit to a PC.

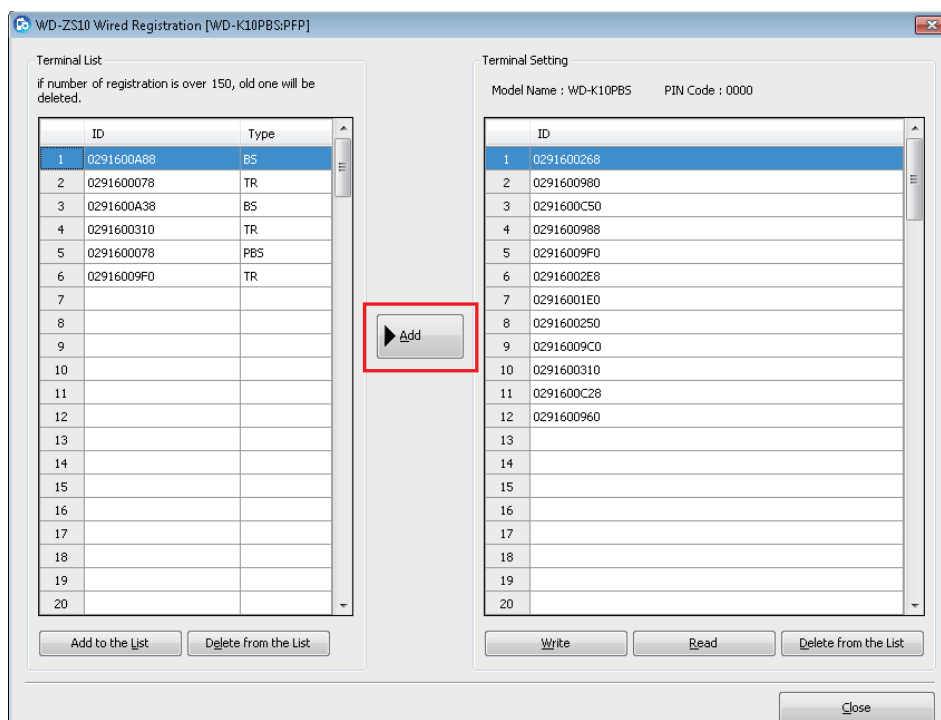


11 Click [Read].**12** Select the ID of the base unit to be registered from the “Terminal List” in the Wired Registration screen.

The base unit ID is type PFP or FP (base station).

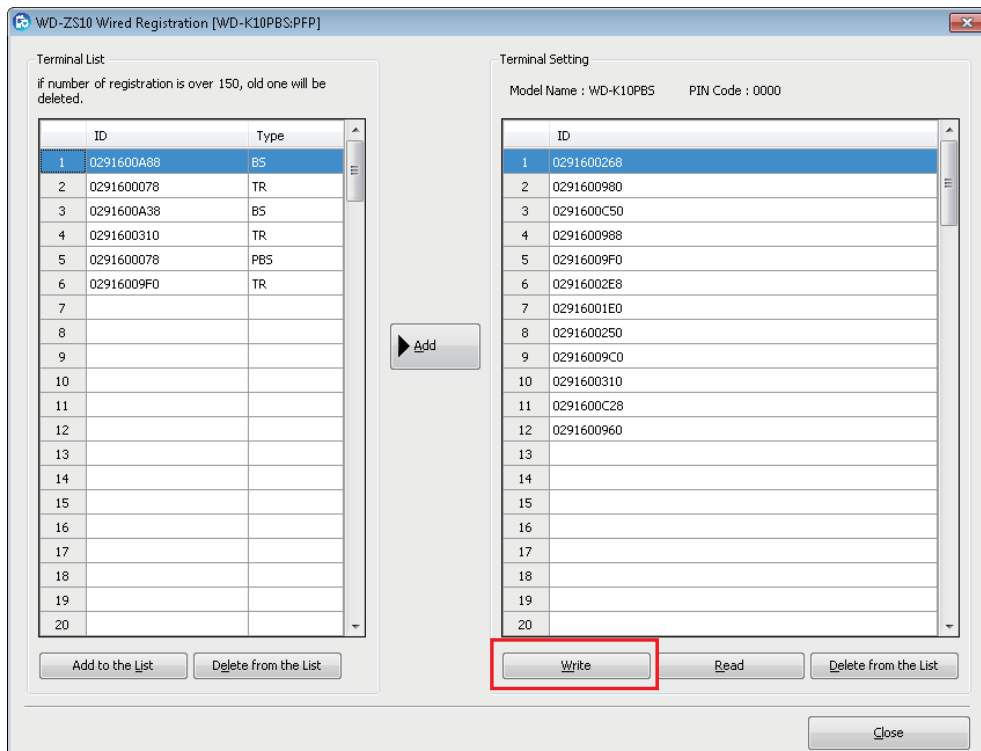
13 Click [Add] to add the device to the “Terminal Setting” list.

The ID of the selected base unit is added to the “Terminal Setting” list.

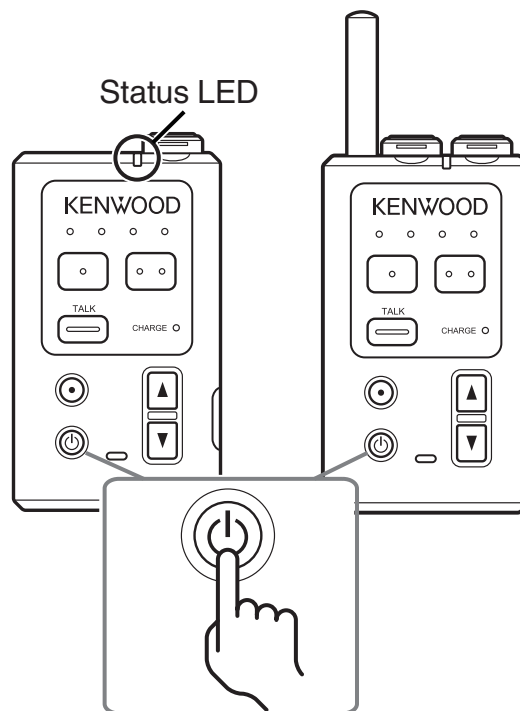


14 Click [Write].

The edited information of the sub unit will be written to the connected base unit.

**15** Turn on the power of the registered base unit and sub unit.

Once the power is turned on, the base unit and sub unit automatically communicate with one another. Communication is complete once the Status LED of the sub unit blinks in green.



4.2 System Setup

You can perform system setup for the DECT Intercom System WD-K10 series. You can import or write settings between connected devices.

Note

- Settings may differ depending on the model of the connected device.
- Setup data can be saved and printed even when the device is not connected.

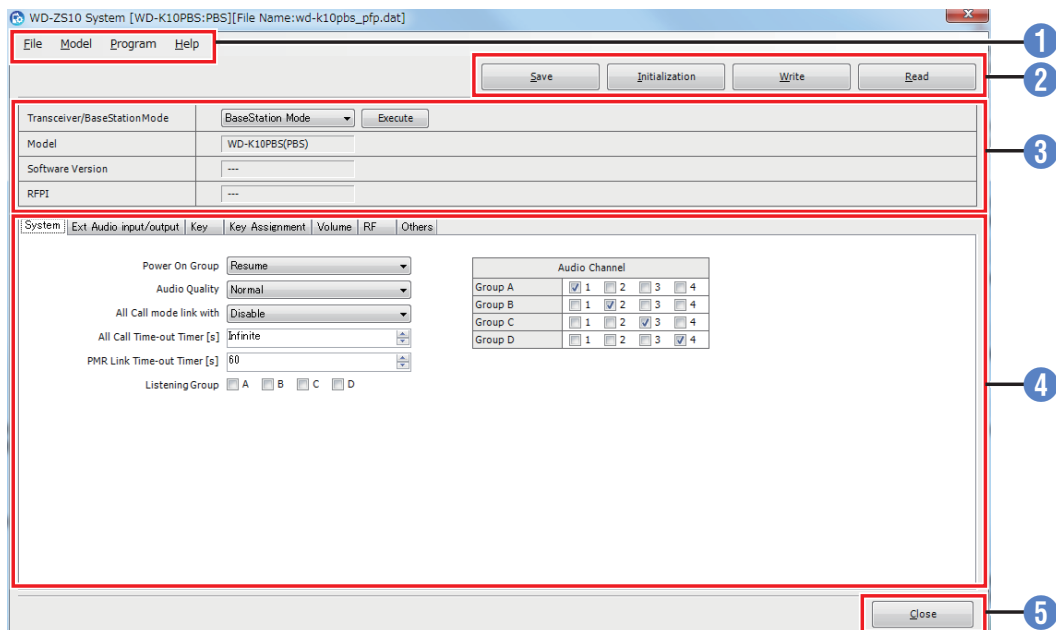
1 Click “System” in the launcher dialog.

System setup data of the connected device will be automatically imported. The System Setup screen appears.

Basic Operations

This section describes the common screens and operating procedures for each model (WD-K10PBS/WD-K10TR/WD-K10BS) of the device.

System Setup Screen



1 Menu Bar

	Menu	Content
File	New	Creates a new setup data file.
	Open	Imports a saved setup file.
	Save	Saves the edited setup data.
	Save As	Saves the edited setup data as a new file.
	Print	Prints the setup data.
	Print Preview	Displays the print preview of the setup data.
	Exit	Exits System setup.
Model	Model Select	Allows user to change the model type for setup.
	Product Information	Displays the serial number of the connected device.
Program	Write	Writes the edited settings to the connected device.
	Read	Imports the settings of the connected device.
	Initialization	Restores the settings of the connected device to default.
Help	Help	Displays the instruction manual of the application.
	About WD-ZS10	Displays the version of the application.

2 Operation Keys

Key	Content
Save	Saves the edited settings as a data file. Saves to the folder specified in "Save As" from File in the menu bar.
Initialization	Restores the settings of the connected device to default.
Write	Writes the edited settings to the connected device.
Read	Imports the settings of the connected device.

3 Device Information Display Area

Item	Content
Transceiver/Base Station Mode	Switches the Transceiver/Base Station Mode in WD-K10PBS. (on page 28)
Model	Displays the model name of the connected device.
Software Version	Displays the software version of the connected device.
RFPI	Displays the RFPI of the connected device.

4 Setup Column

You can enter text or numbers, select items from the pull-down menu and edit the settings. Tabs and setup items displayed differ depending on the model to be configured.

5 [Close] key

This closes the System setup screen.

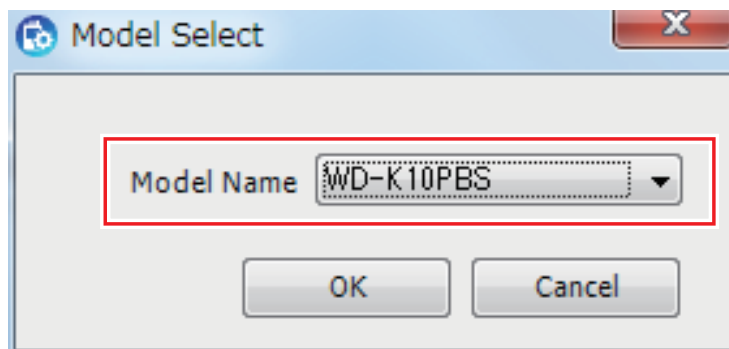
Selecting a Model to be Configured

Select a model to be configured if a device is not connected to a PC.

1 Click “Model” - “Model Select” from the menu bar.

2 Select a model to be configured from the pull-down menu.

“WD-K10PBS”, “WD-K10TR” and “WD-K10BS” are available.



3 Click [OK].

“All data will be initialized.” will be displayed.

4 Click [OK].

The default settings of the selected model are displayed.

Note

- When a device is connected, the model type of the device will be automatically imported. Setup data of a different model from the connected device cannot be written to that device.

Switching between Base Unit and Sub Unit (only for WD-K10PBS)

WD-K10PBS can be used as a base unit (base station) or sub unit (transceiver). During system setup, select either Base Station Mode or Transceiver Mode.

- 1 Select a mode from the “Transceiver/Base Station Mode” pull-down menu in the device information display area.

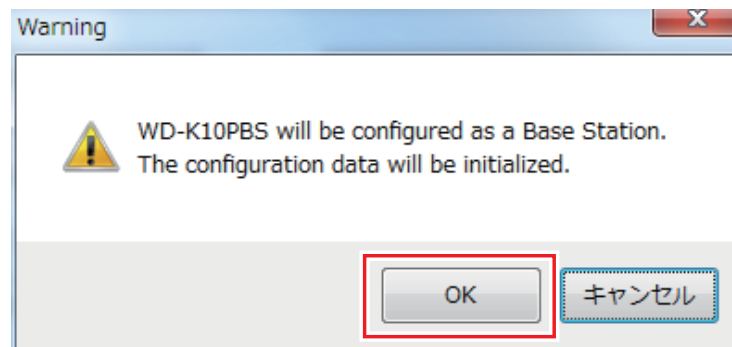
Transceiver/BaseStationMode	BaseStation Mode	Execute
Model	BaseStation Mode Transceiver Mode	
Software Version	---	
RFPI	---	

- 2 Click [Execute].

A confirmation screen appears.

- 3 Click [OK].

The connected device will restart in the selected mode and device settings will be automatically imported.



Note

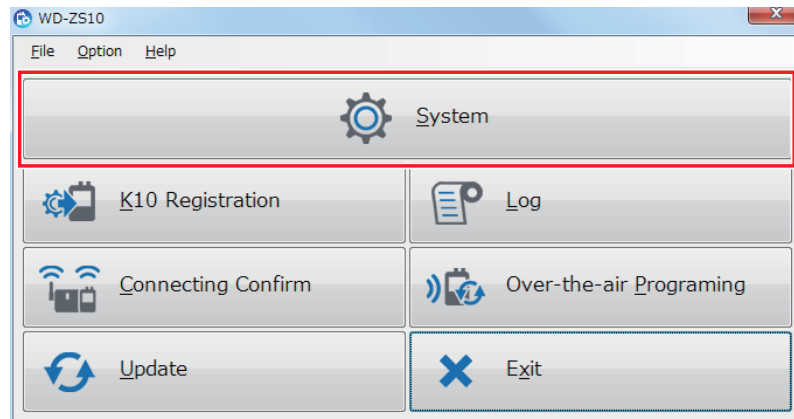
- When the device is not connected and the Transceiver/Base Station Mode is switched, the default settings of the selected mode will be displayed.

Importing and Writing System Setup

Importing System Setup

System setup data of the connected device is imported while the System setup screen is being displayed.

1 Click “System” in the launcher dialog.



System setup data of the connected device will be automatically imported and displayed.

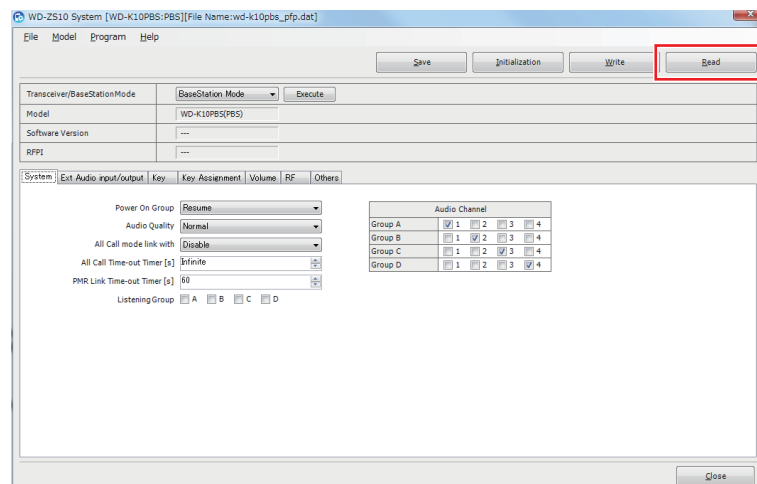
Note

- When the device is not connected, the default settings of the previously configured model will be displayed. When the device is first started up, the default settings of WD-K10PBS (Base Station Mode) will be displayed. To continue setup without connecting the device, select the model to be configured. [on page 27](#)

2 Connect the device.

3 Click [Read].

System setup data of the connected device is displayed.

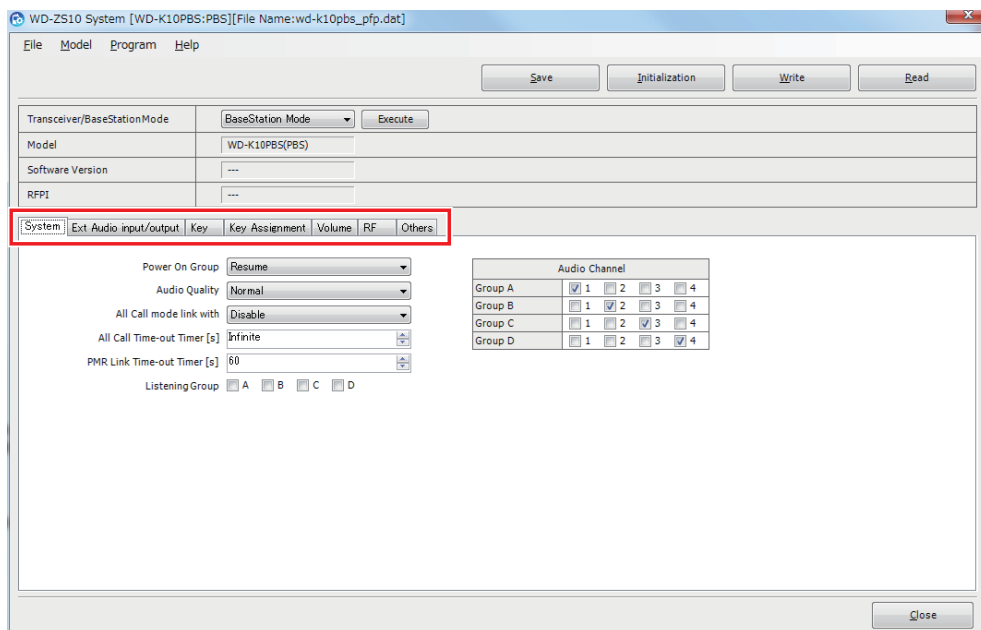


Writing System Setup

You can change the system setup of the connected device and write settings to the device. You may also save the settings on a PC without writing it to the device.

1 Click “System” in the launcher dialog. The System setup screen opens.

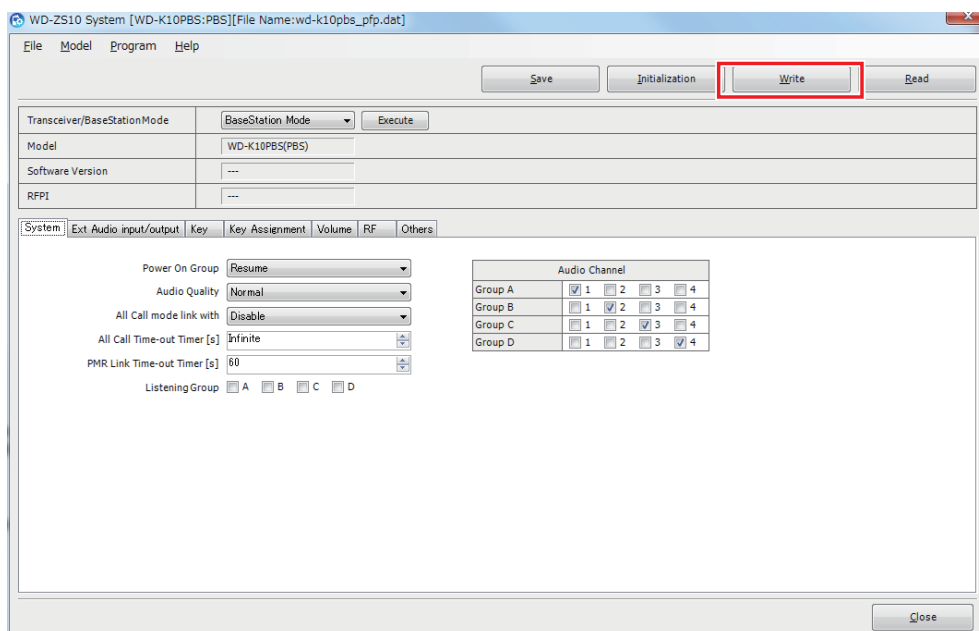
2 Click on the tab of the item to be configured to change the settings.



Tabs and setup items displayed differ depending on the model to be configured.

- WD-K10PBS (Base Station Mode): [on page 32](#)
- WD-K10PBS (Transceiver Mode), WD-K10TR: [on page 40](#)
- WD-K10BS: [on page 46](#)

3 Click [Write].



Note

- To save the settings on a PC without writing, click [Save].

4 Click [OK].

The changed settings will be written to the connected device. The setup contents at this point will be reflected to WD-K10PBS and WD-K10TR.

5 Reflect the setup contents to WD-K10BS.

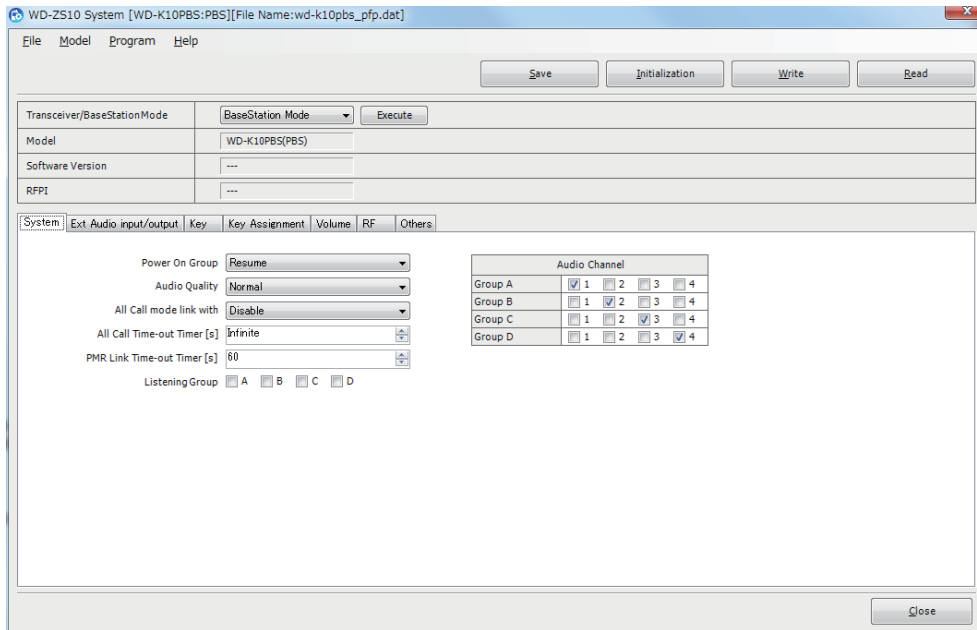
The setup contents at this point will not be reflected to WD-K10BS. Perform either of the following to reflect the setup contents.

- Turn off the power of all connected devices.
- Turn on the power of WD-K10BS.

WD-K10PBS (Base Station Mode) Setup

System

This allows you to perform system setup.



*: Default setting

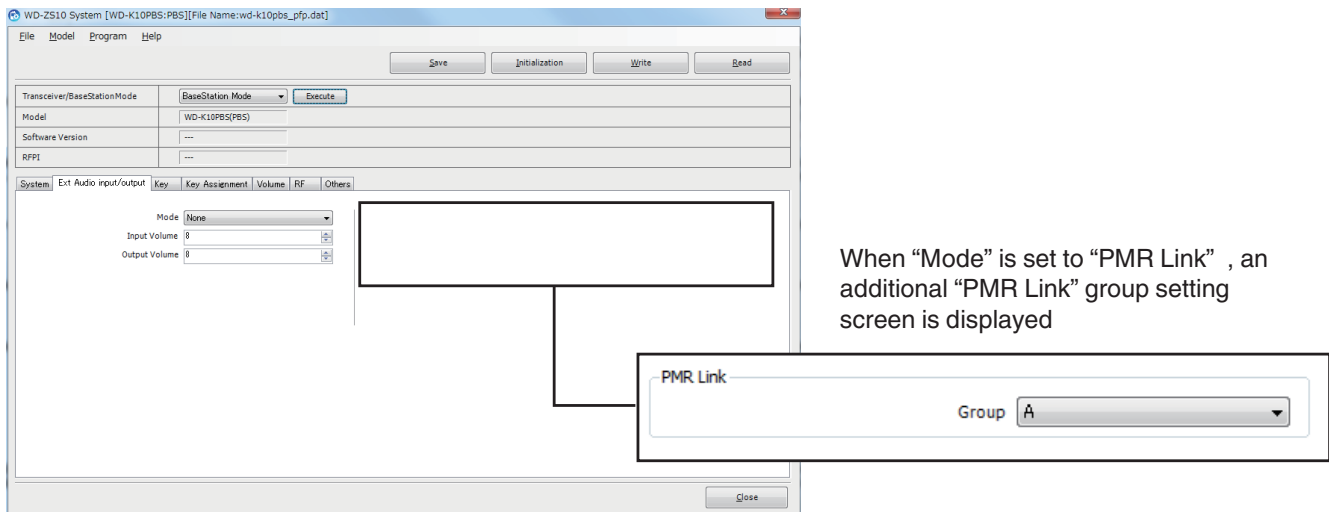
Item	Settings	Content	
Power On Group	Resume*/ Group A/ Group B/ Group C/ Group D	Set the group to which the unit belongs to. If "Resume" is selected, the unit will connect to the group it belongs to previously before the power is turned off.	
Audio Quality	Normal */ High Quality	Set the audio quality.	
All Call mode link with	Disable*/ PMR Link	Set whether to link to an external wireless communication function during All Call.	
All Call Time-out Timer	Infinite*, 10 - 1800 s	Set the time to forcibly cancel the All Call state.	
PMR Link Time-out Timer	Infinite, 10 - 1800 s (60 s*)	Set the time to forcibly cancel the external wireless communication state.	
Listening Group	A	Check/ Uncheck* Set whether to transmit radio waves during listening mode. Insert a check to the group to transmit radio waves.	
	B		
	C		
	D		
Audio Channel	Group A	Audio Channel 1*/ 2/ 3/ 4	Assign audio channel 1 - 4 to Group A - D You can set multiple audio channels for one group.
	Group B	Audio Channel 1/ 2*/ 3/ 4	
	Group C	Audio Channel 1/ 2/ 3*/ 4	
	Group D	Audio Channel 1/ 2/ 3/ 4*	

Note

- When "High Quality" is selected for "Audio Quality" in System setup, high-frequency audio can also be transmitted by bundling multiple communication for "Normal" and expanding the communication bandwidth. It is possible to make a call in High Audio Quality that is clearer and easier to pick up than in "Normal".
- As communication channels are used in "Listening Group", an increase in the number of groups may affect the maximum number of sub units that can be connected. For Normal Audio Quality, if two or more groups are checked, reduce the maximum number of connected units by one unit each. For High Audio Quality, if one or more groups are checked, reduce the maximum number of connected units by one unit each.
- In High Audio Quality, Groups C and D cannot be used for "Listening Group" and "Audio Channel".

External Audio Input/Output

This allows you to perform settings related to the input/output of external audio signals.



*: Default setting

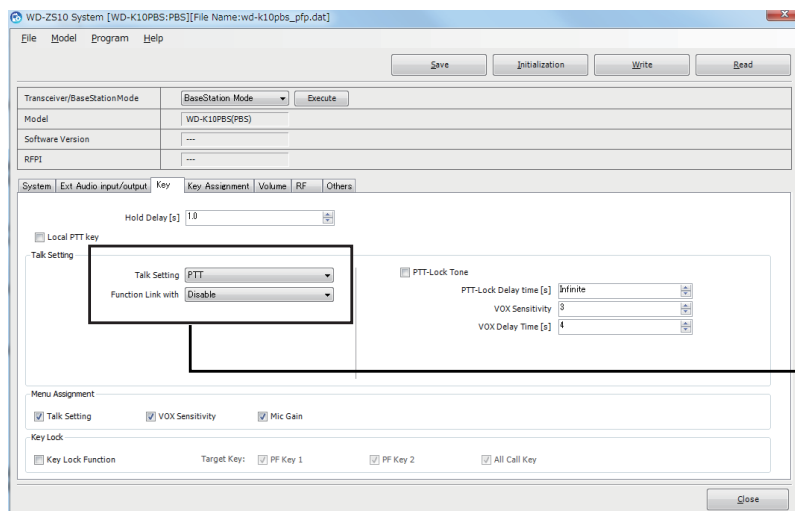
Item		Settings	Content
Mode		None*/ PMR Link	Select the mode for external audio input/output. PMR Link: Inputs and outputs audio signal between connected external wireless devices.
Input Volume		1 - 15 (8*)	Set the volume of the input audio signals from external devices.
Output Volume		1 - 15 (8*)	Set the volume of the output audio signals to external devices.
PMR Link	Group	A*/ B/ C/ D	Set the group to transmit audio signals from external wireless devices and other group call audio signals.

Note

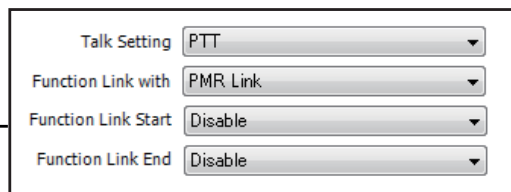
- The group setting of “PMR Link” is displayed only when “Mode” is set to “PMR Link”.
- When “Audio Quality” is set to “High Quality” in System setup (on page 32), groups C and D of “PMR Link” cannot be used.

Key

This allows you to perform settings related to key operations.



Example of additional setting screen displayed when “Function Link with” of “Talk Setting” is set to “PMR Link”



*: Default setting

Item	Settings	Content
Hold Delay	0.5 - 5.0 s (1.0 s*)	Set the duration to determine the holding down of a key.
Local PTT key	Check/ Uncheck*	Set whether to use the Talk key on the unit when connecting to a control microphone. Insert checks to use both Talk keys on the control microphone and on the unit.
Talk Setting	Talk Setting	PTT*/ PTT Lock/ VOX Set the operation when the Talk key is pressed. PTT: Make a call while the Talk key is being pressed. PTT Lock: Press the Talk key to enter call state. Press it again to end the call. VOX: The microphone automatically turns ON in response to audio signals. It is possible to make a hands-free call without having to press the Talk key.
	Function Link with	Disable*/ PMR Link This is displayed when “Talk Setting” is set to “PTT” or “PTT Lock”. Set whether to link the Talk key operation to the start or end of external wireless communication.
	Function Link Start	Disable*/ Enable This is displayed when “Function Link with” is set to “PMR Link”. Set whether to link to the start of external wireless communication when Talk key is ON.
	Function Link End	Disable*/ Enable This is displayed when “Function Link with” is set to “PMR Link”. Set whether to link to the end of external wireless communication when Talk key is OFF.
	PTT-Lock Tone	Check/ Uncheck* Set whether to emit a switching tone when enabling or disabling a call when “Talking Setting” is set to “PTT Lock”.
	PTT-Lock Delay	Infinite*, 10 - 1800 s Set the period of time from when the Talk key is pressed to enter call state until the call ends automatically when “Talk Setting” is set to “PTT Lock”.
	VOX Sensitivity	1 - 5 (3*) Set the detection sensitivity of the voice call when “Talk Setting” is set to “VOX”.
	VOX Delay Time	0 - 10 s (4 s*) Set the silence detection time at the end of the call when “Talk Setting” is set to “VOX”.

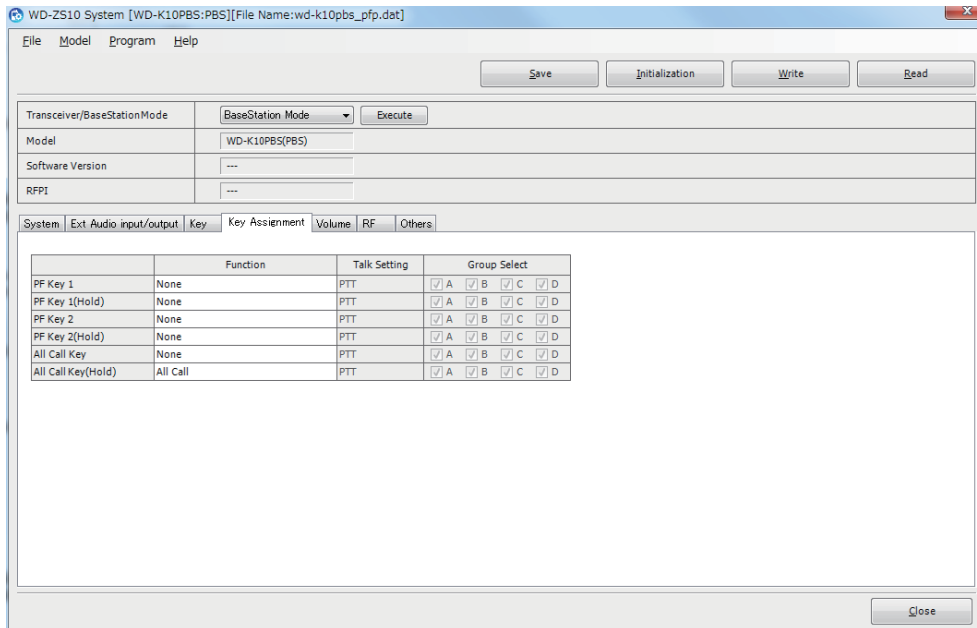
Item		Settings	Content
Menu Assignment	Talk Setting	Check*/ Uncheck	Set items to be used in the setup menu mode of WD-K10PBS.
	VOX Sensitivity		
	Microphone Gain		
Key Lock	Key Lock Function	Check/ Uncheck*	Set whether to use the Key Lock function.
	Target Key	Check*/ Uncheck	Set key lock on/off for PF Key 1, PF Key 2 and All Call Key.

 **Note**

- It is not possible to make a call using “VOX” when “Mode” is set to “Listening Mode” in System setup ([on page 40](#)).

Key Assignment

This allows you to set functions to be assigned to the PF keys of the unit.



*: Default setting

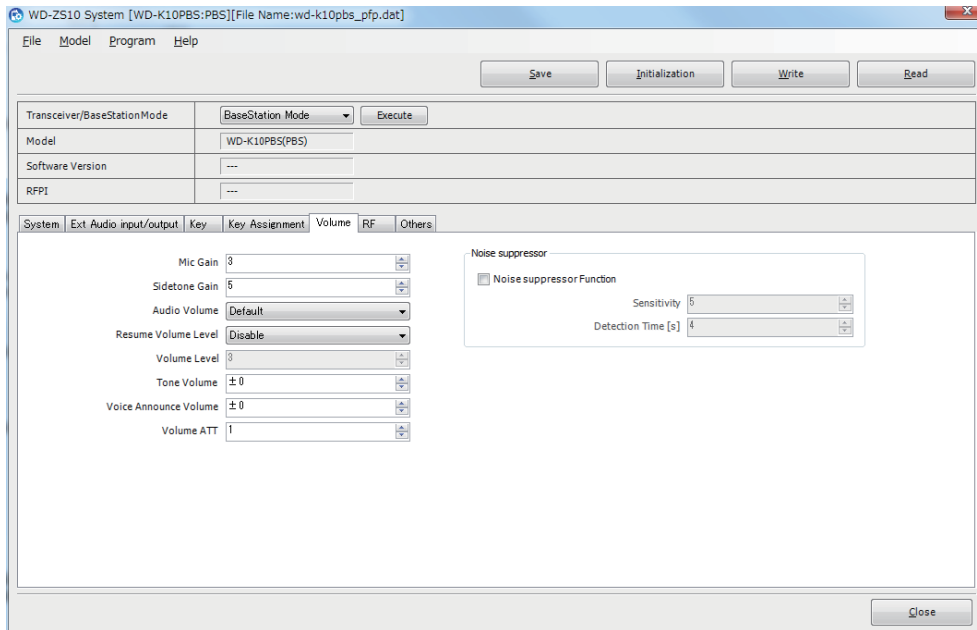
Item		Settings	Content
Function	PF Key 1	None*/ PMR Link/ Switch Talk Function/ Group Select	Set the functions to be assigned to PF Key 1 and PF Key 2 of the unit. Functions can be assigned to press and hold respectively.
	PF Key 2		
	PF Key 1 (Hold)		
	PF Key 2 (Hold)		
	All Call Key	None*/ PMR Link/ Switch Talk Function/ Group Select	
All Call Key (Hold)	None/ PMR Link/ Switch Talk Function/ Group Select/ All Call*		
Talk Setting		PTT*/ PTT Lock/ VOX	This is available when "Function" is set to "Switch Talk Function". Set the Talk key operation to be switched temporarily when the assigned key is pressed.
Group Select	A	Check*/ Uncheck	This is available when "Function" is set to "Group Select". Set the target group to be switched.
	B		
	C		
	D		

Note

- When "Audio Quality" is set to "High Quality" in System setup (on page 32), groups C and D of "Group Select" cannot be used.

Volume

This allows you to perform settings related to volume.

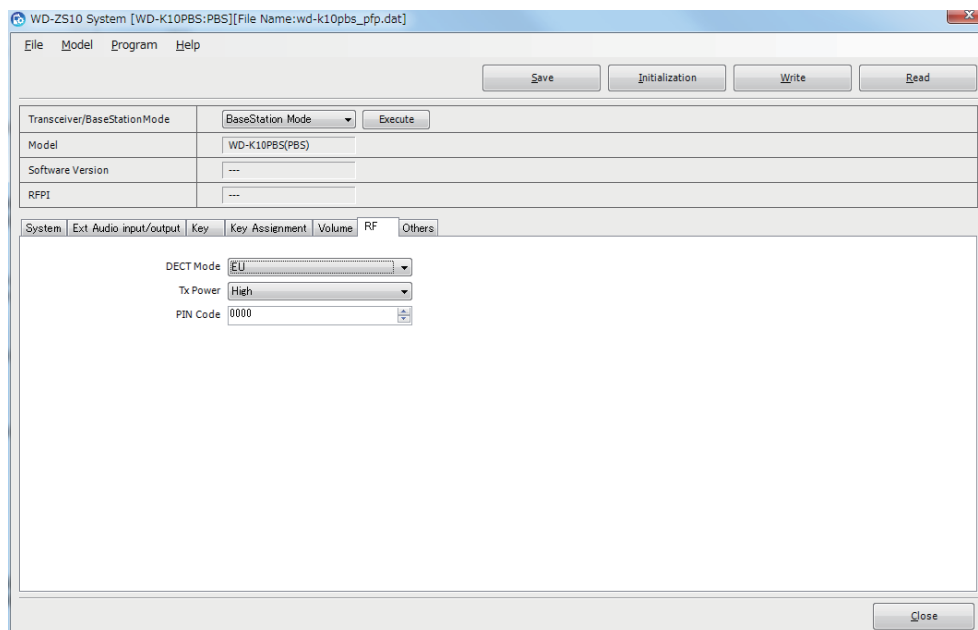


*: Default setting

Item		Settings	Content
Mic Gain		1 - 5 (3*)	Set the input volume of the microphone.
Sidetone Gain		Off, 1 - 5*	Set the volume of the sidetone (your own voice heard from the earphone).
Audio Volume		High/ Default*	Set the receiver volume.
Resume Volume Level		Enable/ Disable*	Set whether to resume the receiver volume that was configured at the time power was turned off, upon turning on the power of the device.
Volume Level		1 - 15 (3*)	Set the volume level.
Tone Volume		-2 - +2 (±0*)	Set the volume of the playback tone.
Voice Announce Volume		-2 - +2 (±0*)	Set the volume of the playback announcement.
Volume ATT		1* - 15	Set the volume level to be lowered temporarily when the [▼] key of WD-K10PBS or WD-K10TR is held down.
Noise suppressor	Noise suppressor Function	Check/ Uncheck*	Set to turn on or off the Noise suppressor function.
	Sensitivity	1 - 5 (5*)	Set the detection sensitivity of the Noise suppressor function. If the receiving call is below the set level, it will be muted.
	Detection Time	1 - 10 s (4 s*)	Set the background noise cut silence detection time for the Noise suppressor function.

RF

This allows you to perform settings related to system mode.

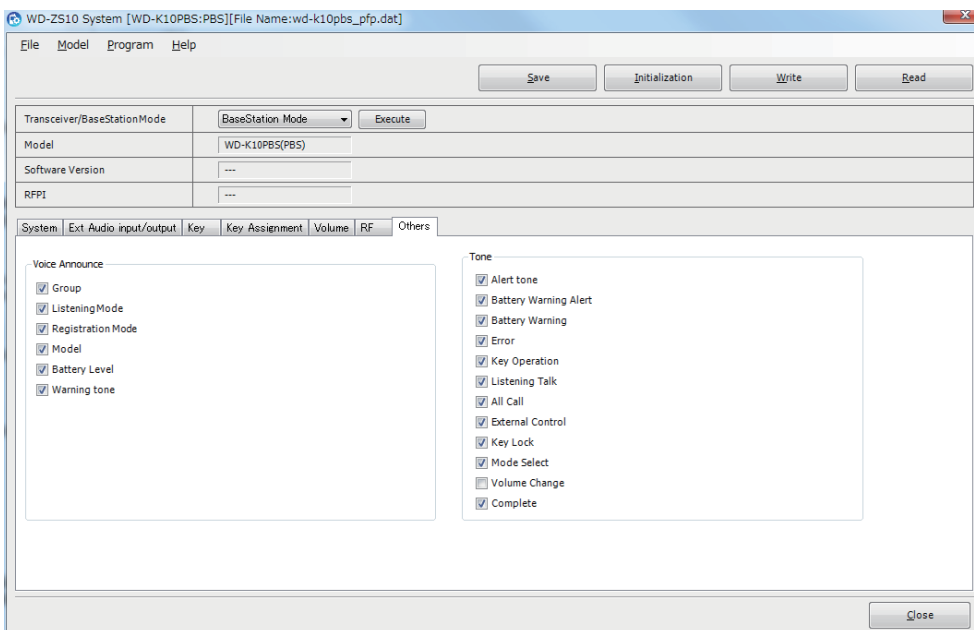


*: Default setting

Item	Settings	Content
DECT Mode	EU*	Set the DECT mode.
Tx Power	High*/ Low	Set the transmission output.
PIN Code	0000* - 9999	Set the PIN code.

Others

This allows you to perform settings for voice announcement, tone emit, and so forth.



*: Default setting

	Item	Settings	Content
Voice Announce	Group	Check*/ Uncheck	Set to turn on/off the voice announcement.
	Listening Mode		
	Registration Mode		
	Model		
	Battery Level		
	Warning Tone		
Tone	Alert tone	Check*/ Uncheck	Set to turn on/off tone emit.
	Battery Warning Alert		
	Battery Warning		
	Error		
	Key Operation		
	Listening Talk		
	All Call		
	External Control		
	Key Lock		
	Mode Select		
	Complete		
	Volume Change	Check/ Uncheck*	

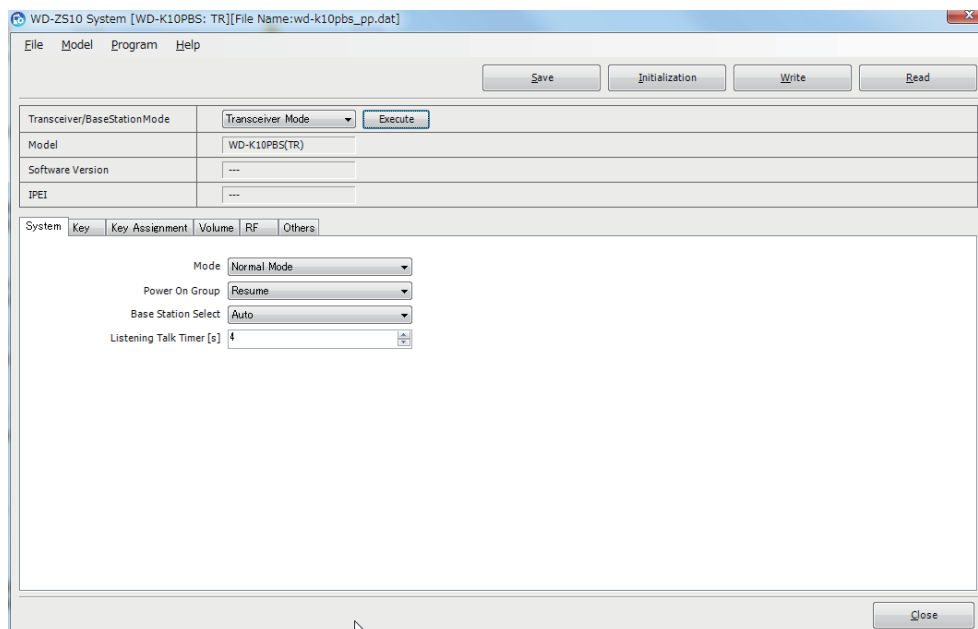
Note

- When the “Mode” of Ext Audio input/output setting (on page 33) is set to “PMR Link”, “Device Operation During Charging” in Others setup will be set to “Auto Power Off”.

WD-K10PBS (Transceiver Mode)/ WD-K10TR Setup

System

This allows you to perform settings related to system.



*: Default setting

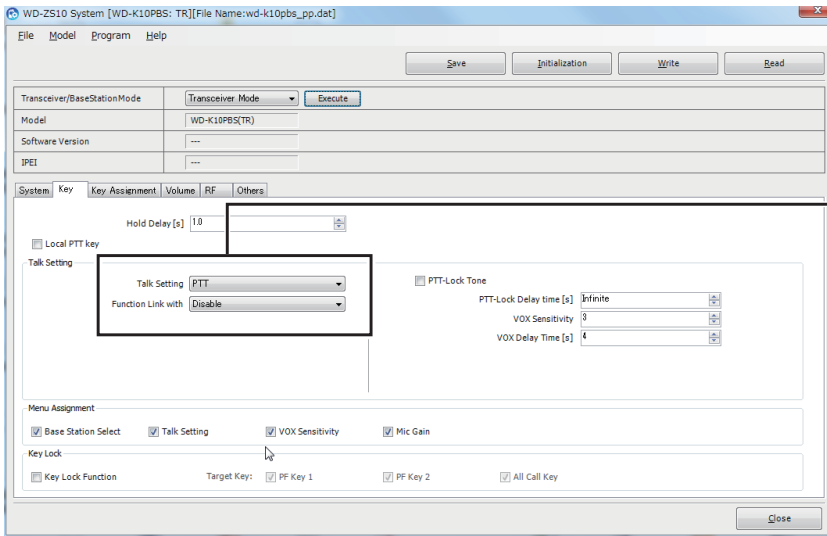
Item	Settings	Content
Mode	Normal Mode*/ Listening Mode	Set the operation mode when the power of the unit is turned on.
Power On Group	Resume*/ Group A/ Group B/ Group C/ Group D	Set the group to which the unit belongs to immediately after power on. If "Resume" is selected, the unit will connect to the group it belongs to previously before the power is turned off.
Base Station Select	Auto*/ Base 1 - Base 6	Select the base station (base unit) to connect. For a system with multiple base units operating, you can connect a sub unit to a designated base unit every time, by matching the number sequence displayed in the Terminal List of "K10 Registration" with the numbers in "Base Station Select".
Listening Talk Timer	0 - 10 s (4 s*)	Set the period of time from when the Talk key is released until the call is cut off during Listening Talk.

Note

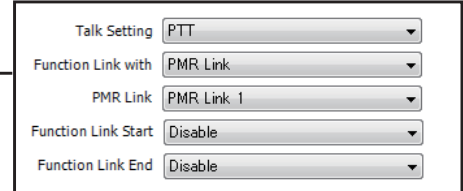
- It is not possible to make a call using "VOX" when "Mode" is set to "Listening Mode".

Key

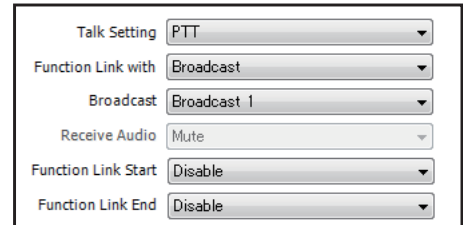
This allows you to perform settings related to key operations.



Example of additional setting screen displayed when “Function Link with” of “Talk Setting” is set to “PMR Link”



Example of additional setting screen displayed when “Function Link with” of “Talk Setting” is set to “Broadcast”



*: Default setting

Item	Settings	Content		
Hold Delay	0.5 - 5.0 s (1.0 s*)	Set the duration to determine the holding down of a key.		
Local PTT key	Check/ Uncheck*	Set whether to use the Talk key of the unit. Check to use both Talk keys on the control microphone and on the unit.		
Talk Setting	Talk Setting	PTT*/ PTT Lock/ VOX	Set the operation when the Talk key is pressed. PTT: Make a call while the Talk key is being pressed. Hold: Press the Talk key to enter call state. Press it again to end the call. VOX: The microphone automatically turns ON in response to audio signals. It is possible to make a hands-free call without having to press the Talk key.	
		Function Link with	Disable*/ PMR Link/ Broadcast	This is displayed when “Talk Setting” is set to “PTT” or “PTT Lock”. Set whether to link the Talk key operation to the start or end of external wireless communication and broadcast.
		PMR Link	PMR Link 1*/ PMR Link 2	This is displayed when “Function Link with” is set to “PMR Link”. Set the destination of the external wireless communication when the Talk key is pressed.
	Function Link Start	Disable*/ Enable	This is displayed when “Function Link with” is set to “PMR Link”. Set whether to connect to the start of external wireless communication when Talk key is ON.	
	Function Link End	Disable*/ Enable	This is displayed when “Function Link with” is set to “PMR Link”. Set whether to connect to the end of external wireless communication when Talk key is OFF.	
	Broadcast	Broadcast 1 + Broadcast 2/ Broadcast 1*/ Broadcast 2	This is displayed when “Function Link with” is set to “Broadcast”. Set the broadcast destination when the Talk key is pressed.	
	Receive Audio	Mute*	This is displayed when “Function Link with” is set to “Broadcast”. Set whether to receive calls in intercom group during broadcast in Function Link with of Talk key.	
	Function Link Start	Disable*/ Enable	This is displayed when “Function Link with” is set to “Broadcast”. Set whether to connect to the start of broadcast when Talk key is ON.	
	Function Link End	Disable*/ Enable	This is displayed when “Function Link with” is set to “Broadcast”. Set whether to connect to the end of broadcast when Talk key is OFF.	

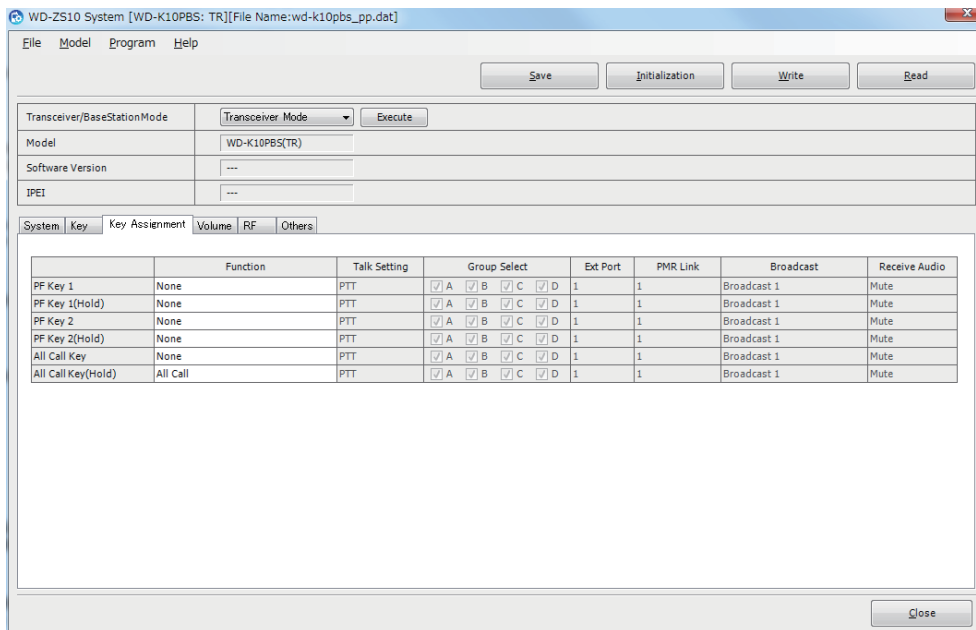
Item		Settings	Content
Talk Setting	PTT-Lock Tone	Check/ Uncheck*	Set whether to emit a switching tone when enabling or disabling a call when "Talk Setting" is set to "PTT Lock".
	PTT-Lock Delay	Infinite*, 10 - 1800 s	Set the period of time from when the Talk key is pressed to enter call state until the call ends automatically when "Talk Setting" is set to "PTT Lock".
	VOX Sensitivity	1 - 5 (3*)	Set the detection sensitivity of the voice call when "Talk Setting" is set to "VOX".
	VOX Delay Time	0 - 10 s (4 s*)	Set the silence detection time at the end of the call when "Talk Setting" is set to "VOX".
Menu Assignment	Base Station Select	Check*/ Uncheck	Set items to be used in the setup menu mode of WD-K10PBS and WD-K10TR.
	Talk Setting		
	VOX Sensitivity		
	Mic Gain		
Key Lock	Key Lock Function	Check/ Uncheck*	Set whether to use the Key Lock function.
	Target Key	Check*/ Uncheck	Set key lock on/off for PF Key 1, PF Key 2 and All Call Key.

 Note

- When "Function Link with" of "Talk Setting" is set to "Broadcast", settings in "Receive Audio" are unavailable.

Key Assignment

This allows you to set functions to be assigned to the PF keys of the unit.



*: Default setting

Item	Settings	Content	
Function	PF Key 1	Set the functions to be assigned to PF Key 1 and PF Key 2 of the unit. Functions can be assigned to press and hold respectively.	
	PF Key 2		
	PF Key 1 (Hold)		
	PF Key 2 (Hold)		
	All Call		Set the functions to be assigned to the All Call key of the unit. Functions can be assigned to press and hold respectively. All call is possible when "All Call" is set.
	All Call (Hold)		

Item		Settings	Content
Talk Setting		PTT*/ PTT Lock/ VOX	This is available when “Function” is set to “Switch Talk Function”. Set the Talk key operation to be switched temporarily when the assigned key is pressed.
Group Select	A	Check*/ Uncheck	This is available when “Function” is set to “Group Select”. Set the target group to be switched.
	B		
	C		
	D		
Ext Port		1*/ 2	This is available when “Function” is set to “External Control”. Select a terminal as the control target.
PMR Link		1*/ 2	This is available when “Function” is set to “PMR Link”. Select a connection terminal for external wireless communication.
Broadcast		Broadcast 1 + Broadcast 2/ Broadcast 1*/ Broadcast 2	This is available when “Function” is set to “Broadcast”. Select the broadcast group for the broadcast destination.
Receive Audio		Unmute/ Mute*	This is available when “Function” is set to “Broadcast”. Set whether to receive group call audio signals during broadcast.

Volume

This allows you to perform settings related to volume.

Setting details are the same as in [Volume on page 37](#) of “WD-K10PBS (Base Station Mode) Setup”.

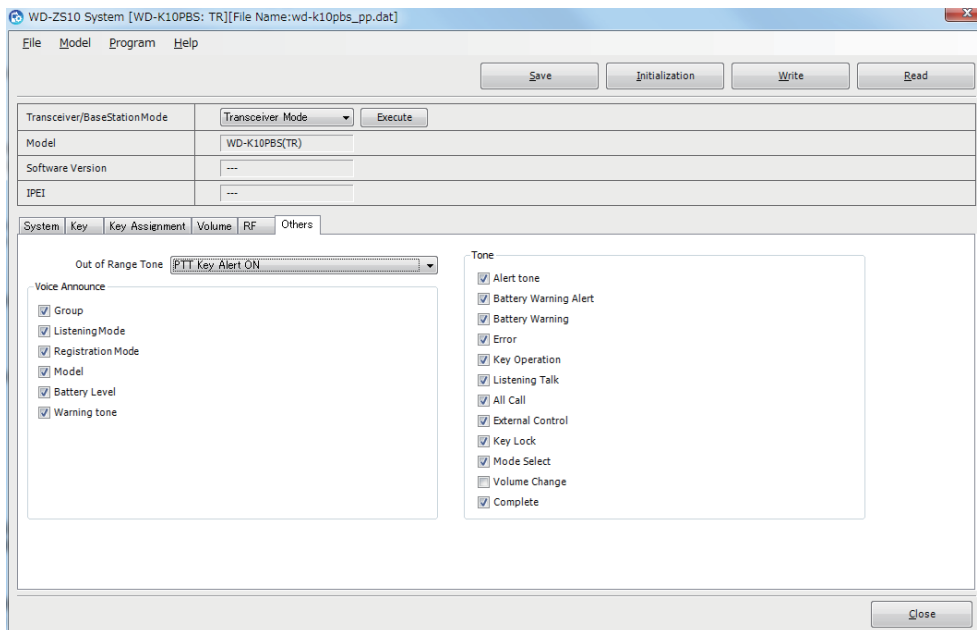
RF

This allows you to perform settings related to system mode.

Setting details are the same as in [RF on page 38](#) of “WD-K10PBS (Base Station Mode) Setup”.

Others

This allows you to perform settings for voice announcement, tone emit, and so forth.

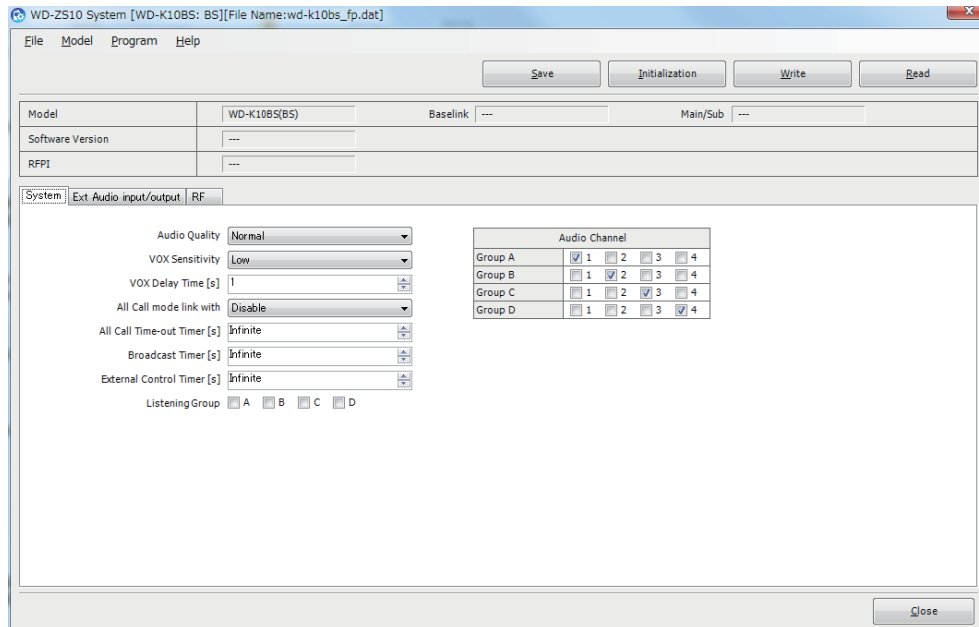


Item		Settings	Content
Out of Range Tone		Out of Range Tone OFF/ Out of Range Tone ON/ PTT key Alert ON*	Set whether to emit an out-of-range tone when out of range.
Voice Announce	Group	Check*/ Uncheck	Set to turn on/off the voice announcement.
	Listening Mode		
	Registration Mode		
	Model		
	Battery Level		
	Warning Tone		
Tone	Alert tone	Check*/ Uncheck	Set to turn on/off tone emit.
	Battery Warning Alert		
	Battery Warning		
	Error		
	Key Operation		
	Listening Talk		
	All Call		
	External Control		
	Key Lock		
	Mode Select		
	Complete		
	Volume Change	Check/ Uncheck*	

WD-K10BS Setup

System

This allows you to perform settings related to system.



*: Default setting

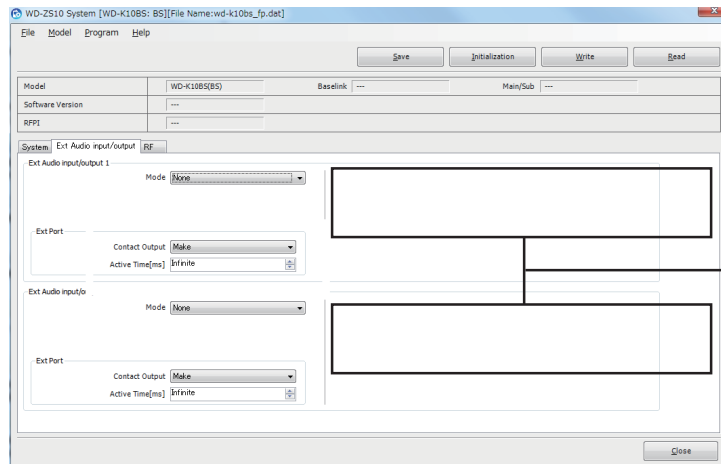
Item	Settings	Content
Audio Quality	Normal*/ High Quality	Set the audio quality.
VOX Sensitivity	Low*/ Middle/ High	Set the detection sensitivity of audio signals when transmitting via audio input from external devices.
VOX Delay Time	1 - 5 (1*)	Set the silence detection time of audio signals when transmission is completed via audio input from external devices.
All Call mode link with	Disable*/ External Control 1/ External Control 2/ PMR Link 1/ PMR Link 2	Set whether to link to the external device control function and external wireless communication function during All Call.
All Call Time-out Timer	Infinite*, 10 - 1800 s	Set the time to forcibly cancel the All Call state.
External Wireless Communication Cancel Time	Infinite, 10 - 1800 s (60 s*)	Set the time to forcibly cancel the external wireless communication state.
Broadcast Timer	Infinite, 10 - 1800 s (60 s*)	Set the time to forcibly cancel the broadcast state.
Listening Group	A	Check/ Uncheck*
	B	
	C	
	D	
Audio Channel	Group A	Audio Channel 1*/ 2/ 3/ 4
	Group B	Audio Channel 1/ 2*/ 3/ 4
	Group C	Audio Channel 1/ 2/ 3*/ 4
	Group D	Audio Channel 1/ 2/ 3/ 4*
		Assign audio channel 1 - 4 to Group A - D You can set multiple audio channels for one group.

 Note

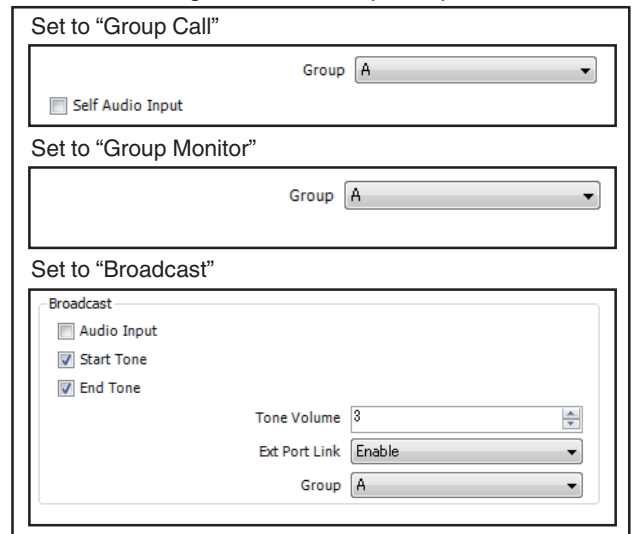
- When “Audio Quality” is set to “High Quality” in System setup, high-frequency audio can also be transmitted by bundling multiple communication for “Normal” and expanding the communication bandwidth. It is possible to make a call in High Audio Quality that is clearer and easier to pick up than in “Normal”.
- As communication channels are used in “Listening Group”, an increase in the number of groups may affect the maximum number of sub units that can be connected. For Normal Audio Quality, if two or more groups are checked, reduce the maximum number of connected units by one unit each. For High Audio Quality, if one or more groups are checked, reduce the maximum number of connected units by one unit each.
- For High Audio Quality, groups that can be used in “Listening Group” and “Audio Channel” differ depending on the modes selected in “External Audio Signal Input 1” and “External Audio Signal Input 2” of External Audio Signal Input/Output Setup ([on page 48](#)). For details, refer to [Group Setup According to Audio Quality and External Audio Input/Output Mode Combinations on page 50](#).

External Audio Input/Output

This allows you to perform settings related to the input/output of external audio signals.



Example of displayed setting screen displayed according to "Mode" settings in "Ext Audio input/output 1/2"



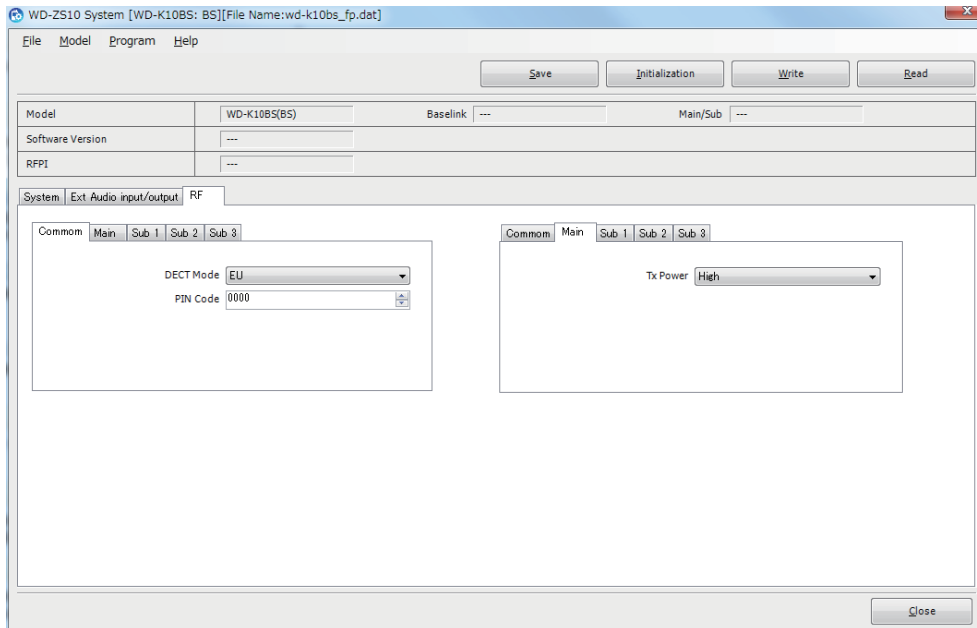
*: Default setting

Item		Settings	Content	
Mode		None*/ Group Call/ Group Monitor/ Broadcast	Select the mode for external audio signal input/output. Group Call: Inputs the audio signals from external devices to the configured group, and outputs group call audio signals to external devices. Group Monitor: Outputs the group call audio signals to external devices. Broadcast: Outputs the group call audio signals to connected broadcast devices.	
	Ext Port	Contact Output	Make*/ Break	Select the polarity when the control terminal is turned on.
		Active Time	Infinite* - 10000 ms	Set the control time of external devices that are connected to the external device control terminals.
	Group	A*/ B/ C/ D	Set the group in which audio signals are input from or output to external devices.	
	Self Audio Input	Check/ Uncheck*	Set whether to emit audio signals from external audio input to external audio signal output.	
Broadcast	Audio Input	Check/ Uncheck*	Set whether to transmit audio signals input from external audio input terminals during broadcast as group call.	
	Start Tone	Check/ Uncheck*	Set whether to emit a start tone at the start of broadcast.	
	End Tone	Check/ Uncheck*	Set whether to emit an end tone at the end of broadcast.	
	Tone Volume	1 - 5 (3*)	Set the tone volume.	
	Ext Port Link	Disable/ Enable*	Set whether to connect to a control terminal at the start and end of broadcast.	
Group	A*/ B/ C	Set the group to transmit audio signals from external audio input terminals when "Audio Input" is selected.		

Note

- “Group” is only displayed when “Mode” is set to “Group Call” or “Group Monitor”.
- “Self Audio Input” is only displayed when “Mode” is set to “Group Call”.
- “Broadcast” is only displayed when “Mode” is set to “Broadcast”.
- When “Audio Quality” is set to “High Quality” in System setup (on page 46), groups that can be used in “Group” differ depending on the modes selected in “External Audio Signal Input 1” and “External Audio Signal Input 2” of External Audio Signal Input/Output Setup. For details, refer to [Group Setup According to Audio Quality and External Audio Input/Output Mode Combinations on page 50](#).

RF



This allows you to perform settings related to system mode.

*: Default setting

Item		Settings	Content
Common	DECT mode	EU*	Set the DECT mode.
	PIN Code	0000* - 9999	Set the PIN code.
Main/ Sub 1/ Sub 2/ Sub 3	Tx Power	Low/ High*/ Off	Set the transmission output.

Note

- When Tx Power is set to Off, the wireless function of the base unit is disabled and radio waves are not output. As such, connection with sub units cannot be established. Select Low or High.

Group Setup According to Audio Quality and External Audio Input/Output Mode Combinations

Groups that can be used in “Listening Group” and “Audio Channel” of System setup ([on page 46](#)) and in “Group” of Ext Audio input/output setup ([on page 48](#)) differ in the following manner, according to the “Audio Quality” and external audio signal input “Mode” combinations in System setup.

- When “Audio Quality” is set to “Normal” in System setup

“Mode” in Ext Audio input/output		Available Groups			
Ext Audio input/output 1	Ext Audio input/output 2	Group A	Group B	Group C	Group D
None	None	○	○	○	○
None	Group Call	○	○	○	○
None	Group Monitor	○	○	○	○
None	Broadcast/ PMR Link	○	○	○	—
Group Call	None	○	○	○	○
Group Call	Group Call	○	○	○	○
Group Call	Group Monitor	○	○	○	○
Group Call	Broadcast/ PMR Link	○	○	○	—
Group Monitor	None	○	○	○	○
Group Monitor	Group Call	○	○	○	○
Group Monitor	Group Monitor	○	○	○	○
Group Monitor	Broadcast/ PMR Link	○	○	○	—
Broadcast/ PMR Link	None	○	○	○	—
Broadcast/ PMR Link	Group Call	○	○	○	—
Broadcast/ PMR Link	Group Monitor	○	○	○	—
Broadcast/ PMR Link	Broadcast/ PMR Link	○	○	—	—

○: Available

-: Unavailable

- When “Audio Quality” is set to “High Quality” in System setup

“Mode” in Ext Audio input/output		Available Groups			
Ext Audio input/output 1	Ext Audio input/output 2	Group A	Group B	Group C	Group D
None	None	○	○	—	—
None	Group Call	○	○	—	—
None	Group Monitor	○	○	—	—
None	Broadcast/ PMR Link	○	—	—	—
Group Call	None	○	○	—	—
Group Call	Group Call	○	○	—	—
Group Call	Group Monitor	○	○	—	—
Group Call	Broadcast/ PMR Link	○	—	—	—
Group Monitor	None	○	○	—	—
Group Monitor	Group Call	○	○	—	—
Group Monitor	Group Monitor	○	○	—	—
Group Monitor	Broadcast/ PMR Link	○	—	—	—
Broadcast/ PMR Link	None	○	—	—	—
Broadcast/ PMR Link	Group Call	○	—	—	—
Broadcast/ PMR Link	Group Monitor	○	—	—	—
Broadcast/ PMR Link	Broadcast/ PMR Link	*	*	*	*

○: Available

—: Unavailable

*: When “Audio Quality” is set to “High Quality” in System setup, both modes in External Audio Signal 1 and 2 cannot be set to “Broadcast” or “PMR Link”.

4.3 Log Display

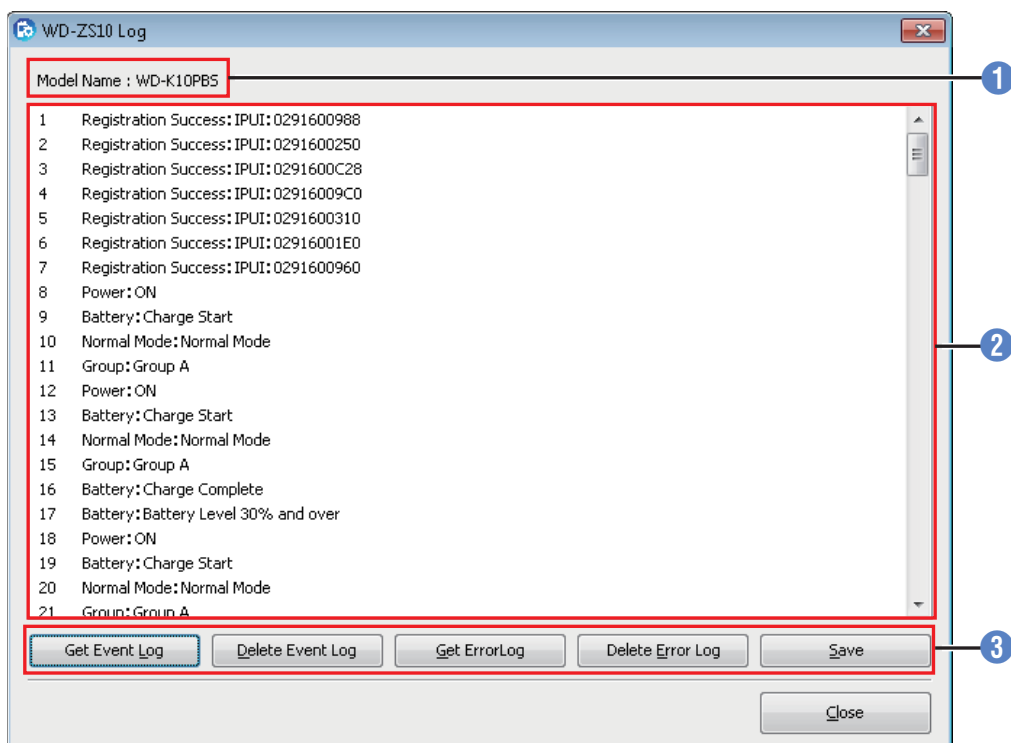
You can retrieve and display all event or error logs from devices connected to the PC. The retrieved logs can be output to files in the CSV format.

Opening Log Display

1 Click “Log” in the launcher dialog.

The Log display screen appears.

Log Display Screen



1 Model Name

The model name of the device that is connected to a PC is displayed.

2 Log Display Area

It displays the event or error logs in chronological order.

3 Operation Keys

Key	Content
Get Event Log	Retrieves and displays event logs.
Delete Event Log	Deletes the event logs of connected devices.
Get Error Log	Retrieves and displays error logs.
Delete Error Log	Deletes the error logs of connected devices.
Save	Saves the retrieved log information as a CSV file.
Close	Closes the Log display screen.

Note

- Retrieve or delete the logs after connecting a device to a PC.

4.4 Connection Status Check

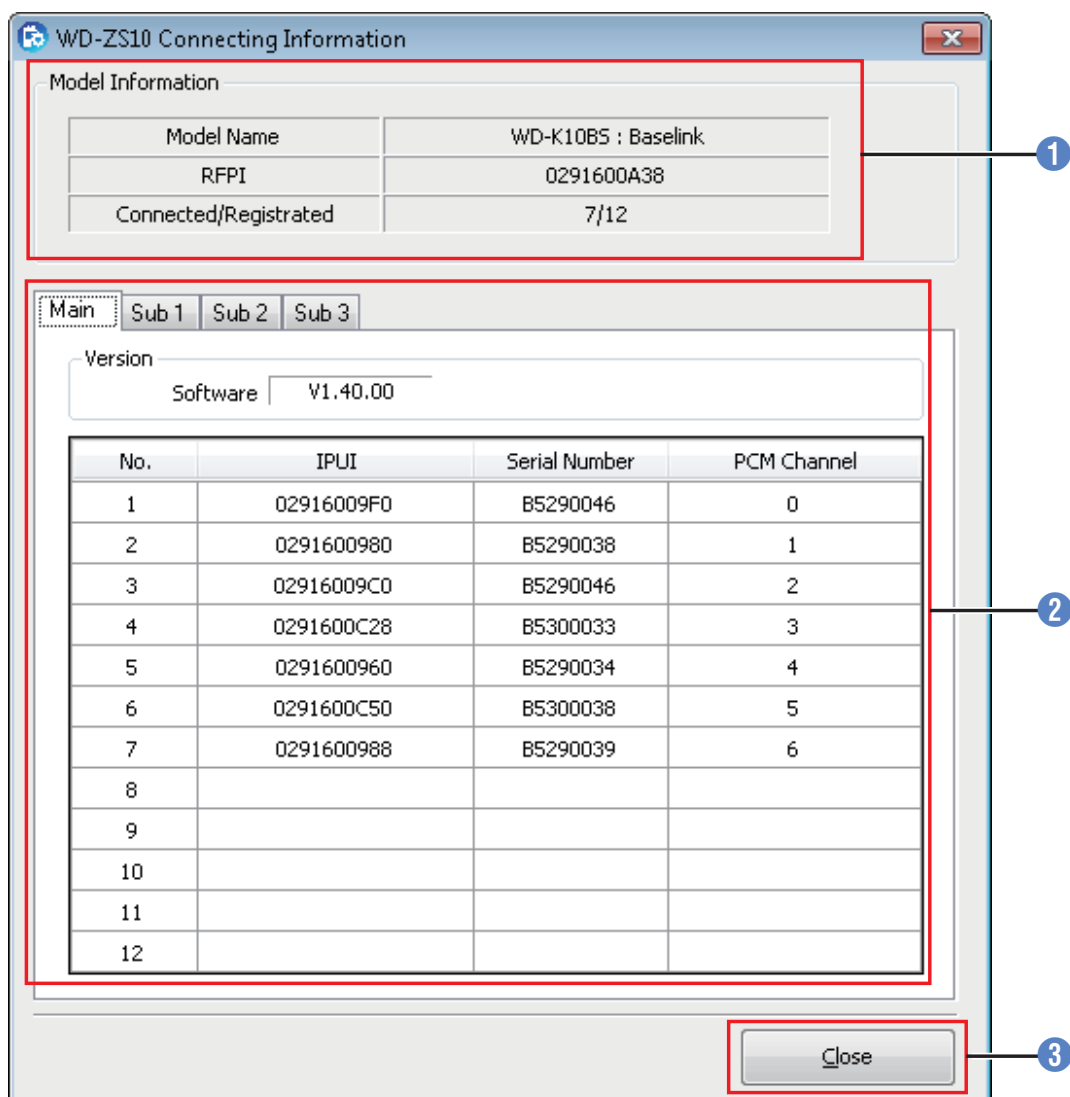
This checks the connection status of a device to a PC.

Opening Connection Status Display

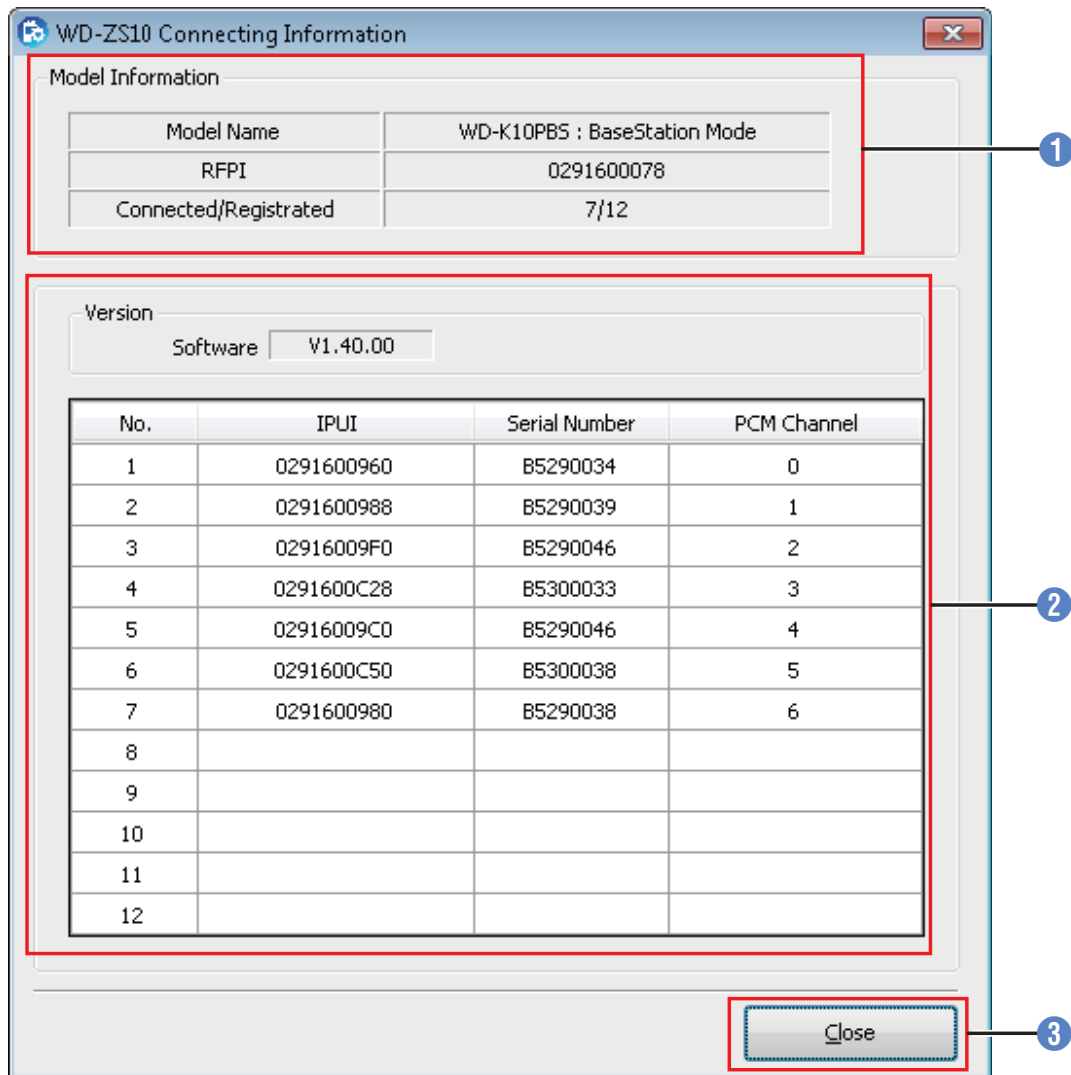
1 Connect a device to a PC and click “Connecting Confirm” in the launcher dialog.

The Connecting Information display screen appears.

Connecting Information Display Screen (WD-K10BS Base Station Mode)



Connecting Information Display Screen (WD-K10PBS Base Station Mode)



1 Model Information Display Area

Item	Content
Model Name	The model name of the base unit that is connected to a PC is displayed.
RFPI	The device ID of the base unit that is connected to a PC is displayed.
Connected/Registered	The number of sub units (left side) connected to a base unit and the number of sub units (right side) registered to a base unit are displayed.

2 Connection Status Display Area

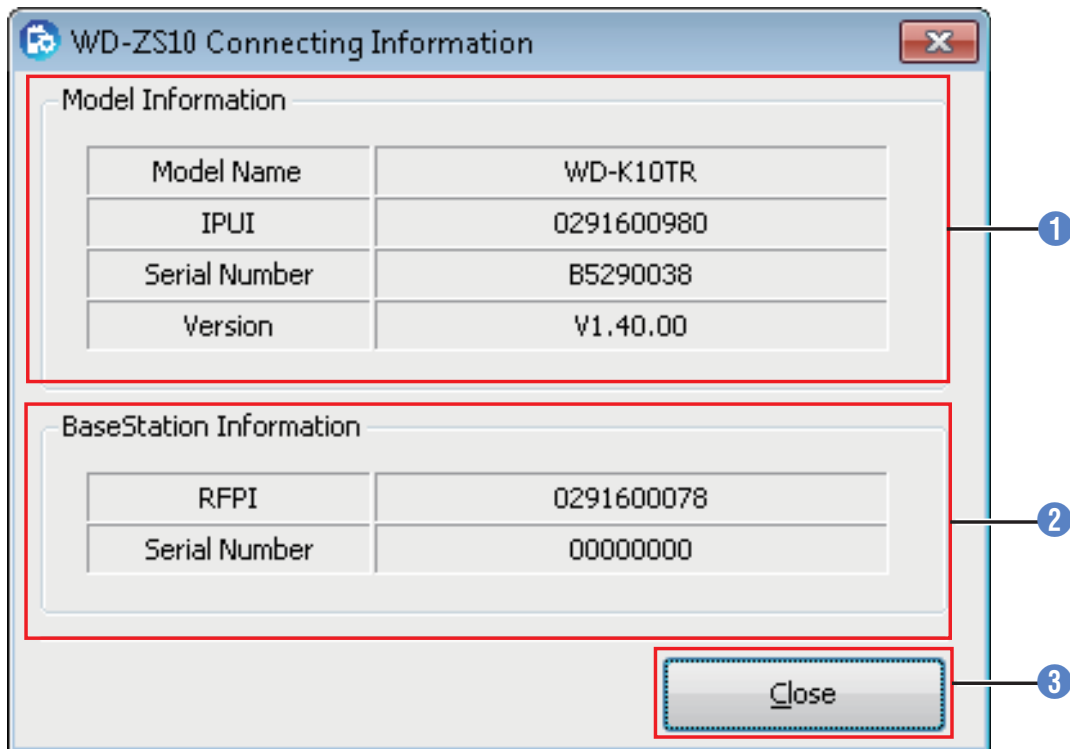
When base link connection with WD-K10BS is established, information for main and sub 1-3 is displayed.

Item	Content
No.	Slot 1 - 12 are displayed.
IPUI	IDs of sub units that are connected to each slot are displayed.
Serial Number	Serial numbers of sub units that are connected to each slot are displayed.
PCM Channel	Frequency channels of sub units that are connected to each slot are displayed.

3 [Close] key

This closes the Connecting Information screen.

Connecting Information Display Screen (WD-K10PBS Transceiver Mode/ WD-K10TR)



1 Model Information Display Area

Item	Content
Model Name	The model name of the sub unit that is connected to a PC is displayed.
IPUI	The ID of the sub unit that is connected to a PC is displayed.
Serial Number	The serial number of the sub unit that is connected to a PC is displayed.
Version	The current software version is displayed.

2 Base Unit Information Display Area

Item	Content
RFPI	The device ID of the base unit is displayed.
Serial Number	The serial number of the base unit is displayed.

3 [Close] key

This closes the Connecting Information screen.

 Precautions

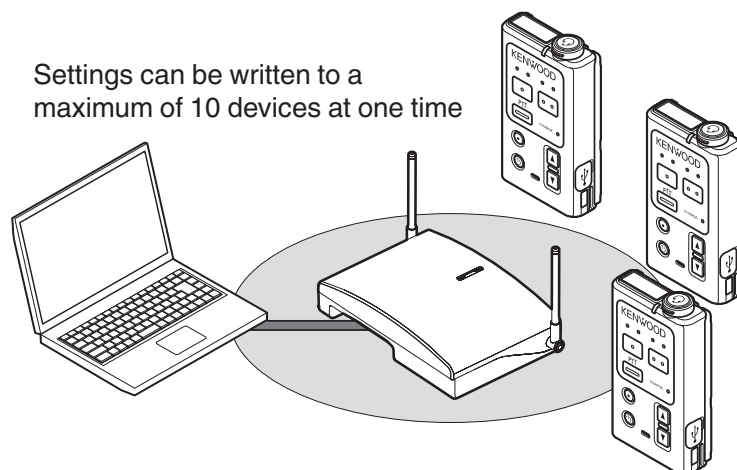
- The connection status cannot be checked when the device is in Listening Mode.

4.5 Wireless Settings Update

Use files created in System setup and write file settings to sub units via wireless communication.

Settings can only be updated if the firmware versions of the base unit and sub unit are 1.10 or later. Update to the latest firmware version before use.

For firmware updates, refer to [Firmware Update on page 62](#).



Note

- Settings can be written to a maximum of 10 sub units at one time in Normal Audio Quality, or to a maximum of 5 sub units in High Audio Quality. To write to more sub units beyond the restricted numbers, perform writing in batches. (Turn off the power of the completed devices.)
- To prevent communication failure due to radio frequency interference when updating settings via wireless, turn off the power of other non-target devices.
- For the PC and WD-K10BS connection in a base link system using WD-K10BS, connect the main base unit to the PC.
- For a base link system, settings can only be updated for a sub unit that is connected to the main base unit via wireless. As such, move the sub unit to within the range of the main base unit during update.
- For WD-K10PBS (Base Station Mode), wireless settings update cannot be performed during All Call and PMR Link.
- Other than the above, restrictions for WD-K10BS are similar for cases during broadcast and external device control.
- Settings cannot be updated via wireless for devices that are being configured in Listening Mode.
- We recommend backing up your setup data beforehand.

Precautions

- Do not connect a sub unit to a PC when updating settings via wireless.

Writing Settings

1 Connect a base unit (WD-K10PBS or BS) to a PC.

Connect the base unit to a PC using a USB cable (A type - Micro B type) (sold separately).

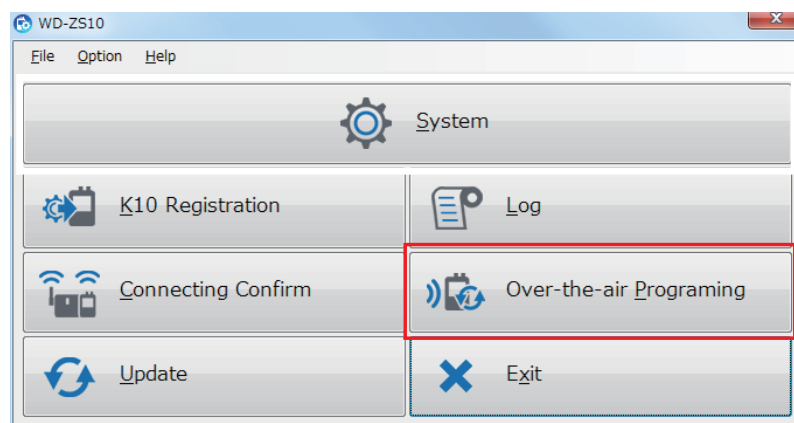
2 When using WD-K10BS for the base unit, turn on the power here.

For turning on the power, refer to [Turning On/Off the Device Power on page 70](#).

3 Register the sub unit where you wish to write the settings to.

Register the device to WD-K10PBS or BS. [on page 12](#)

4 Click “Over-the-air Programming” in the launcher dialog.



The Over-the-air Programming screen appears.

When using WD-K10PBS for the base unit, turn on the power here.

Over-the-air Programming Screen

WD-ZS10 Over-the-air Programming

List

RFPI : 0291600A38 Serial Number : B5500000 Connected : 6 / Registrated : 12

No.	IPUI	Serial Number	Version	Update	Status
01	0291600250	FE030011	V1.40.00	<input type="checkbox"/>	Enable
02	0291600960	B5290034	V1.40.00	<input type="checkbox"/>	Enable
03	0291600988	B5290039	V1.40.00	<input type="checkbox"/>	Enable
04	02916009C0	B5290046	V1.40.00	<input type="checkbox"/>	Enable
05	0291600C28	B5300033	V1.40.00	<input type="checkbox"/>	Enable
06	0291600C50	B5300038	V1.40.00	<input type="checkbox"/>	Enable
07				<input type="checkbox"/>	
08				<input type="checkbox"/>	
09				<input type="checkbox"/>	
10				<input type="checkbox"/>	
11				<input type="checkbox"/>	
12				<input type="checkbox"/>	

Select All

Refresh Write

File

Open

Close

1 List (Base Unit Information Display Area)

Item	Content
RFPI	The device ID of the base unit that is connected to a PC is displayed.
Serial Number	The serial number of the base unit that is connected to a PC is displayed.
Connected/Registered	The number of sub units (left side) connected to a base unit and the number of sub units (right side) registered to a base unit are displayed.

2 List (Sub Unit Information Display Area)

Item	Content
No.	Slot 1 - 12 are displayed.
IPII	IDs of sub units that are connected to each slot are displayed.
Serial Number	Serial numbers of sub units that are connected to each slot are displayed.
Version	The current software version is displayed.
Update	Select to write settings to a sub unit.
Status	The status of sub units that are connected to each slot are displayed.

Note

- You can check the status of the sub unit at the Over-the-air Programming screen.

Indication	Content
Enable	Devices that are rewritable
Disable	Devices that are not rewritable
In Preparation	Write instructions have been issued but writing has not begun
Writing data....	Writing in progress
Complete	Writing is complete
Failed	Writing could not be performed due to some reasons

3 Operation Keys

Item	Content
Select All	Select to check all the "Update" check boxes of rewritable sub units that are connected to each slot.
Refresh	Updates the information of sub units that are connected to each slot.
Write	Starts the updating of settings to sub units that have been checked using the "Update" check box.

4 [Open] key

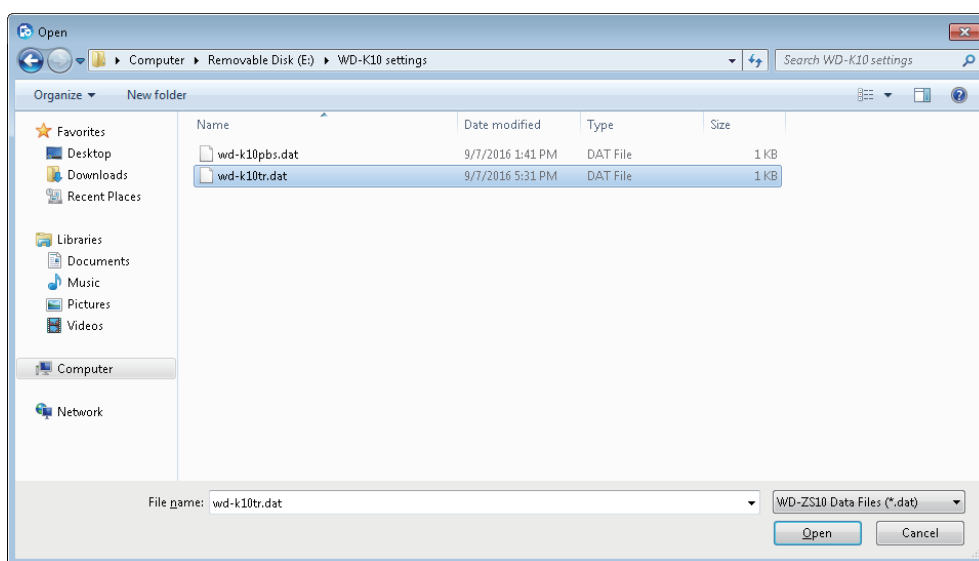
This opens a file created in System Setup.

5 [Close] key

This closes the Over-the-air Programming screen.

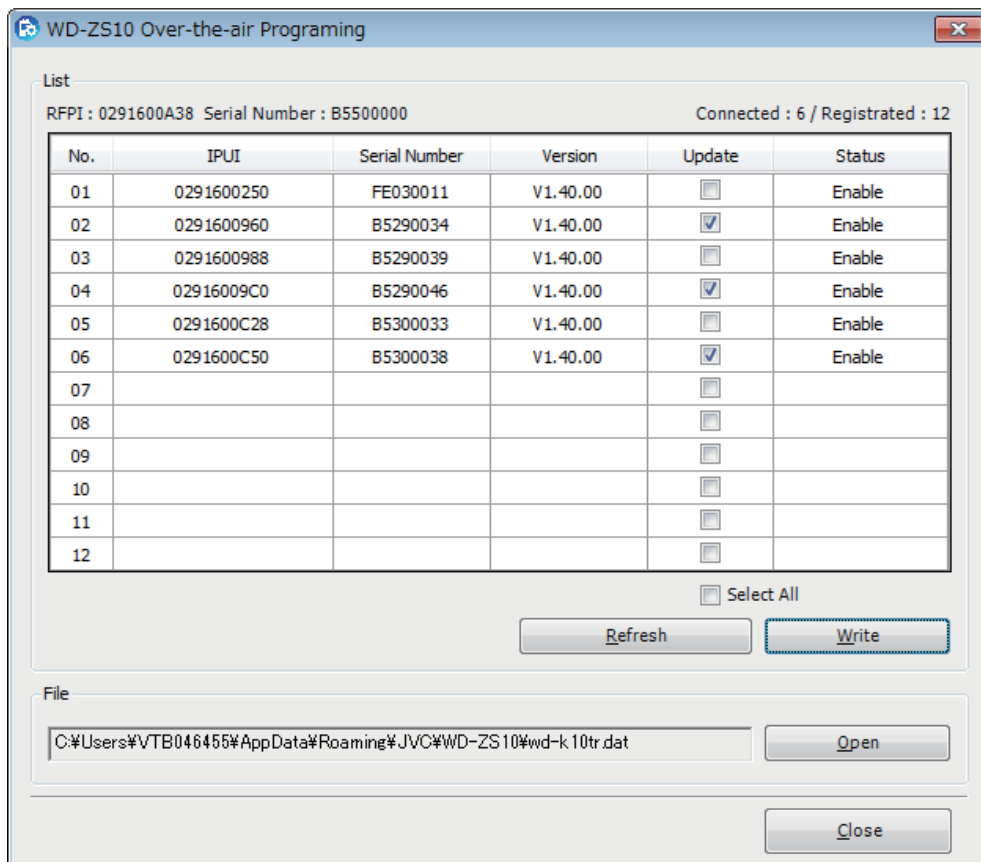
5 Turn on the power of the sub unit.

For turning on the power, refer to [Turning On/Off the Device Power](#) on page 70.

6 Click [Refresh] and check the device status.**7 Click [Open] in the Over-the-air Programming screen and select a setup file.****8 Select the setup file, and then click [Open].**

The selected file is displayed in the Over-the-air Programming screen.

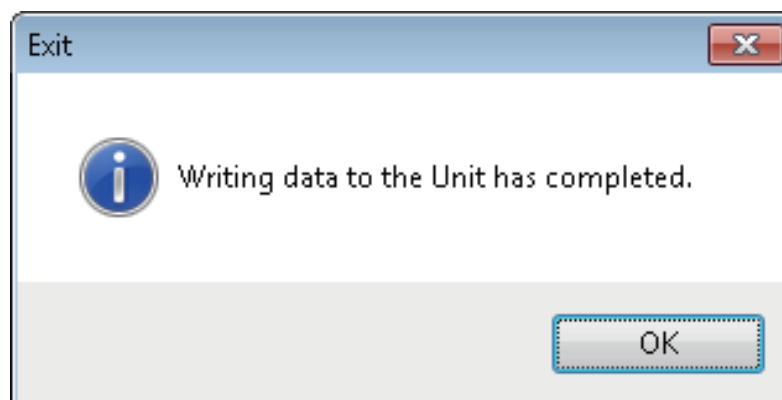
- 9** Select a device to be updated using the “Update” check box in the Over-the-air Programming screen. Click [Write].



Updating of settings begins.

- 10** Check the update complete message and click [OK].

Updating of settings is complete.



4.6 Firmware Update

This updates the firmware of the device.

Before the update, download the firmware for the device to your PC.

Firmware update via wireless communication is only available when the firmware versions of the base unit and sub unit are 1.10 or later.

Update to the latest version via wired communication.

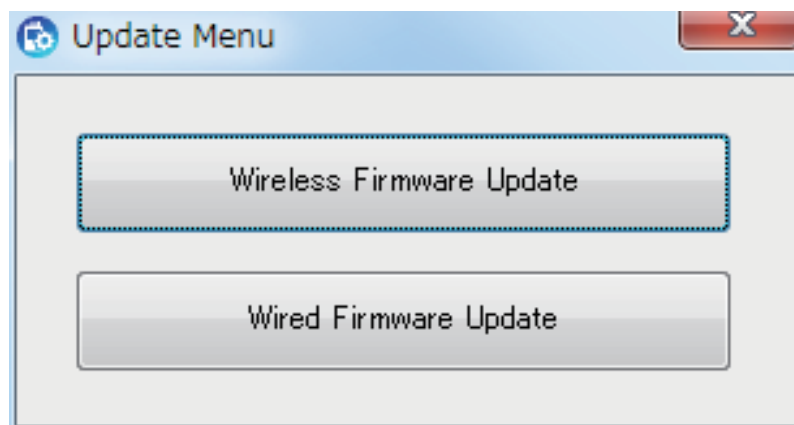
Precautions

- It is your responsibility to update the correct firmware versions for your devices.
- The software applicable in the firmware update is dedicated for the target product. Do not use it on other devices.
- Fully charge the battery in WD-K10PBS or WD-K10TR before updating the firmware.

Opening Firmware Update Screen

1 Click “Update” in the launcher dialog.

The Update menu screen appears.

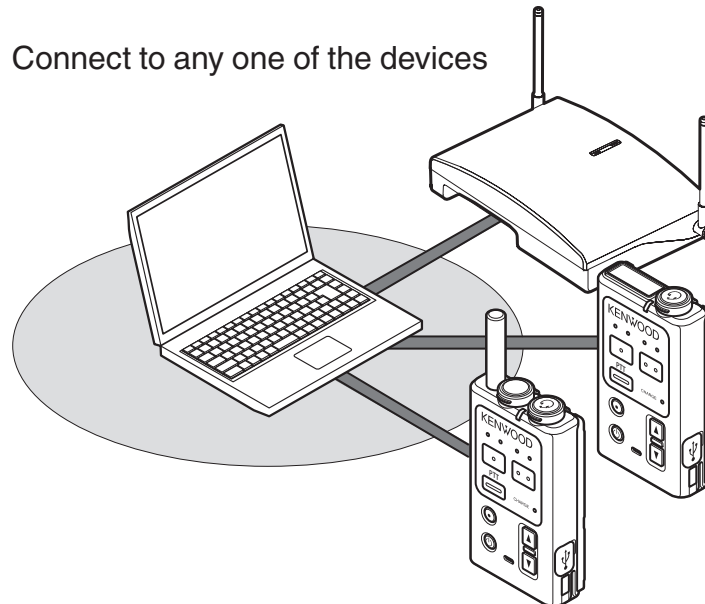


Updating Firmware Via Wired

Connect one device to the PC and update the device firmware.

1 Connect a device to a PC.

Connect one device to a PC using a USB cable (A type - Micro B type) (sold separately).



Note

- Two or more devices cannot be connected to the PC at the same time. Connect only one device for firmware update.

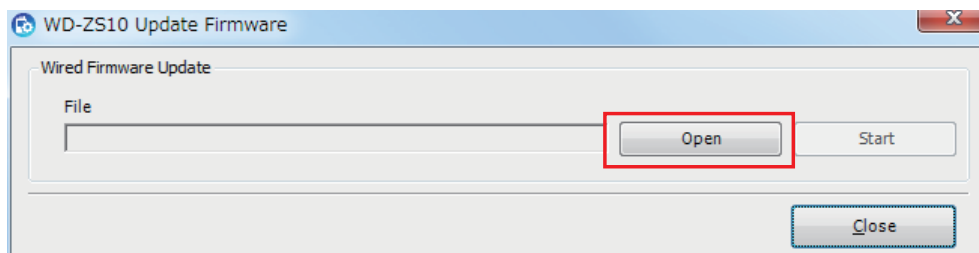
2 Click “Wired Firmware Update” on the Update menu screen.

The Wired Firmware Update screen appears.

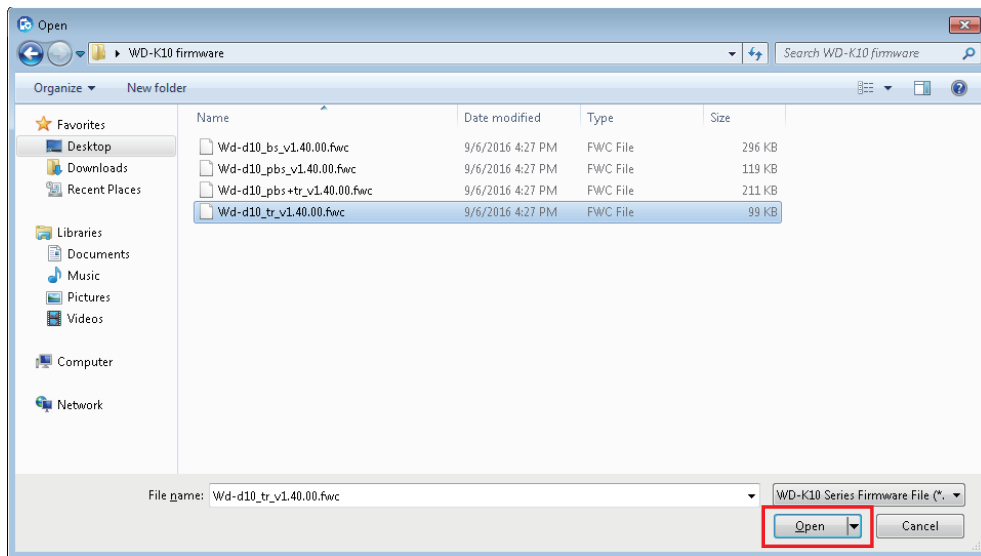
3 For WD-K10BS, turn on the power here.

For turning on the power, refer to [Turning On/Off the Device Power on page 70](#).

4 Click [Open] in the “Wired Firmware Update” screen and select a firmware file.



5 Select the firmware file, and then click [Open].

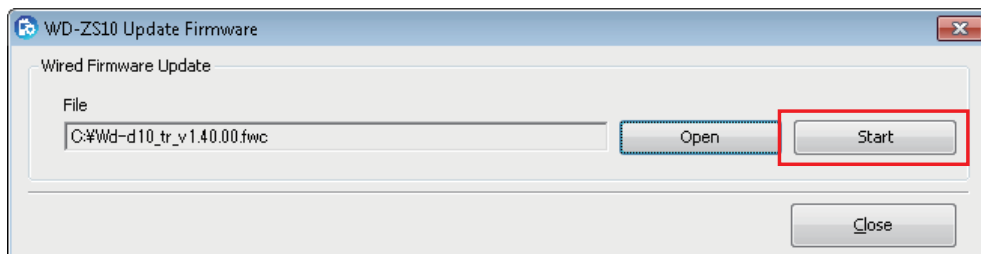


The selected file name is displayed in the firmware Update screen.

Note

- Select a firmware file that supports the connected device.

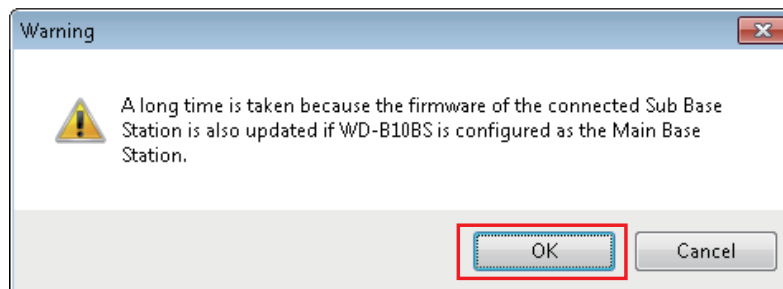
6 Click [Start].



Firmware update begins.

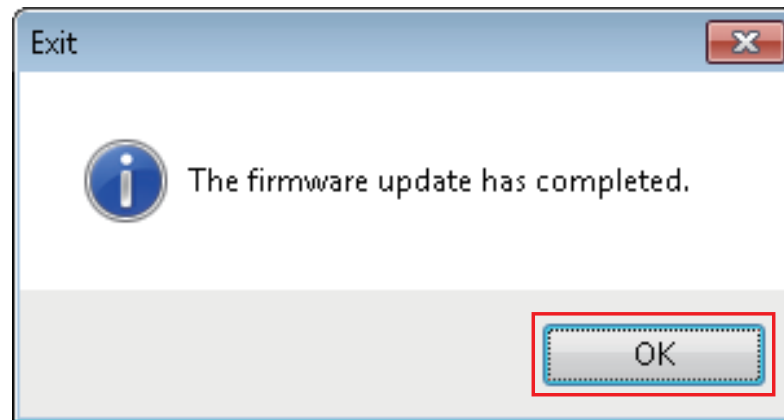
Note

- When updating firmware for WD-K10BS, the following warning message will appear. To continue firmware update, click [OK].



7 Check the update complete message and click [OK].

Firmware update is complete.



Updating Firmware Via Wireless

Connect a base unit (WD-K10PBS or BS) to the PC and update the device firmware via wireless communication.

Note

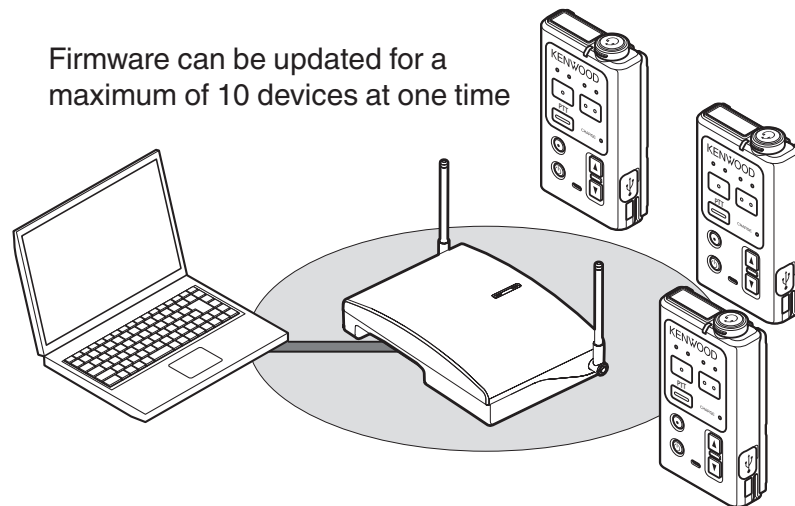
- Firmware can be updated for a maximum of 10 sub units at one time in Normal Audio Quality, or for a maximum of 5 sub units in High Audio Quality.
To update to more sub units beyond the restricted numbers, perform updating in batches. (Turn off the power of the completed devices.)
- To prevent communication failure due to radio frequency interference when updating firmware via wireless, turn off the power of other non-target devices.
- For the PC and WD-K10BS connection in a base link system using WD-K10BS, connect the main base unit to the PC.
- For a base link system, firmware can only be updated for a sub unit that is connected to the main base unit via wireless. As such, move the sub unit to within the range of the main base unit during update.
- Standardize the firmware version of the base units to be connected to a base link system.
- For WD-K10PBS (Base Station Mode), firmware update cannot be performed during All Call and PMR Link.
- Other than the above, restrictions for WD-K10BS are similar for cases during broadcast and external device control.
- Firmware cannot be updated via wireless for devices that are being configured in Listening Mode.

Precautions

- Do not connect a sub unit to a PC during firmware update.

1 Connect a base unit (WD-K10PBS or BS) to a PC.

Connect the base unit (WD-K10PBS or BS) to a PC using a USB cable (A type - Micro B type) (sold separately).



2 When using WD-K10BS for the base unit, turn on the power here.

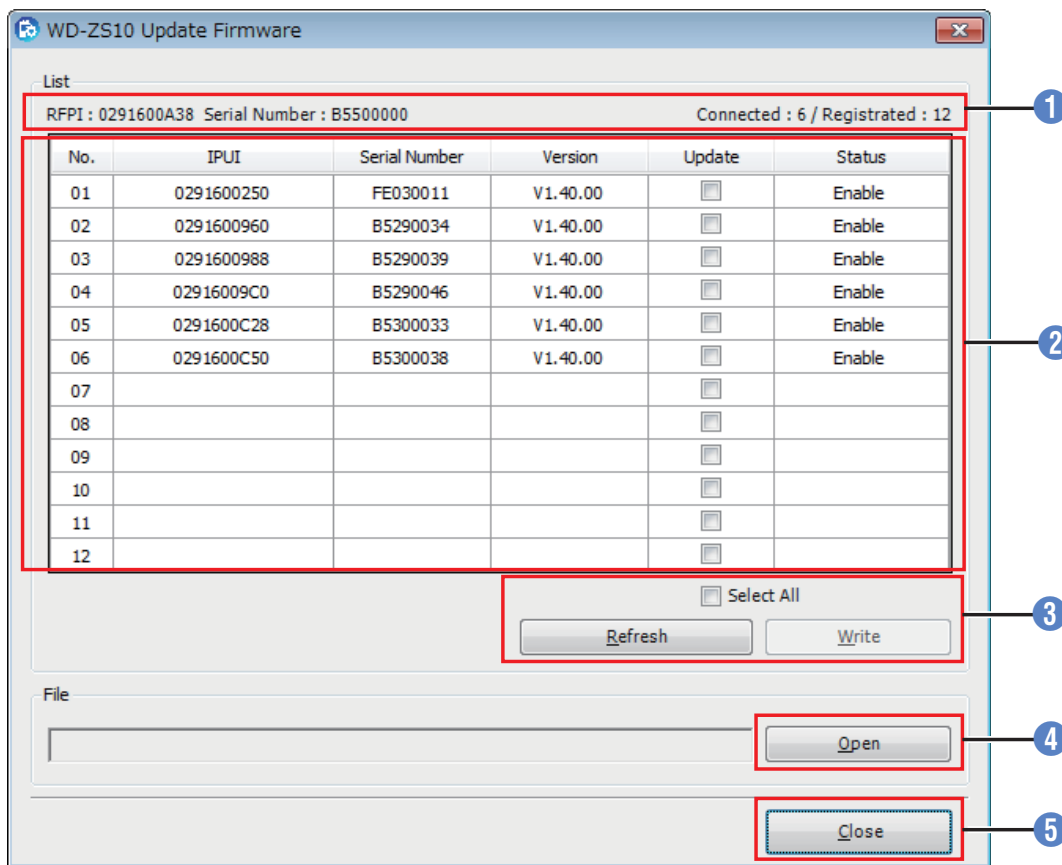
For turning on the power, refer to [Turning On/Off the Device Power on page 70](#).

3 Click “Wireless Firmware Update” on the Update menu screen.

The Firmware Update screen appears.

When using WD-K10PBS for the base unit, turn on the power here.

Firmware Update Screen



1 List (Base Unit Information Display Area)

Item	Content
RFPI	The device ID of the base unit that is connected to a PC is displayed.
Serial Number	The serial number of the base unit that is connected to a PC is displayed.
Connected/Registered	The number of sub units (left side) connected to a base unit and the number of sub units (right side) registered to a base unit are displayed.

2 List (Sub Unit Information Display Area)

Item	Content
No.	Slot 1 - 12 are displayed.
IPUI	IDs of sub units that are connected to each slot are displayed.
Serial Number	Serial numbers of sub units that are connected to each slot are displayed.
Version	The current software version is displayed.
Update	Select to write settings to a sub unit.
Status	The status of sub units that are connected to each slot are displayed.

Note

- You can check the status of the sub unit at the firmware Update screen.

Indication	Content
Enable	Devices that are rewritable
Disable	Devices that are not rewritable
In Preparation	Write instructions have been issued but writing has not begun
Writing data....	Writing in progress
Complete	Writing is complete
Failed	Writing could not be performed due to some reasons

3 Operation Keys

Item	Content
Select All	Select to check all the "Update" check boxes of rewritable sub units that are connected to each slot.
Refresh	Updates the information of sub units that are connected to each slot.
Write	Starts the updating of settings to sub units that have been checked using the "Update" check box.

4 [Open] key

This opens the firmware file.

5 [Close] key

This closes the firmware Update screen.

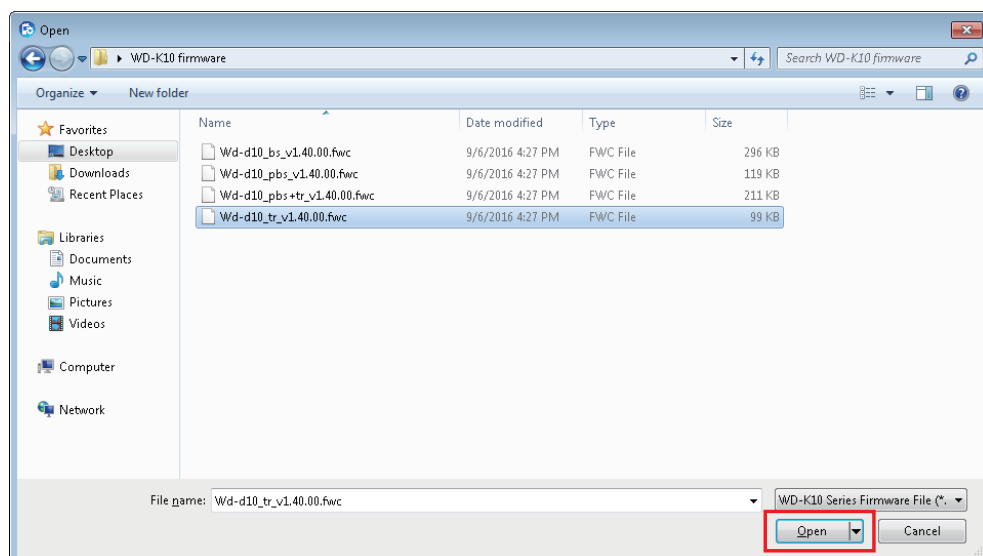
4 Turn on the power of the sub unit.

For turning on the power, refer to [Turning On/Off the Device Power on page 70](#).

5 Click [Refresh] and check the device status.

6 Click [Open] on the Firmware Update screen.

7 Select the firmware file, and then click [Open].

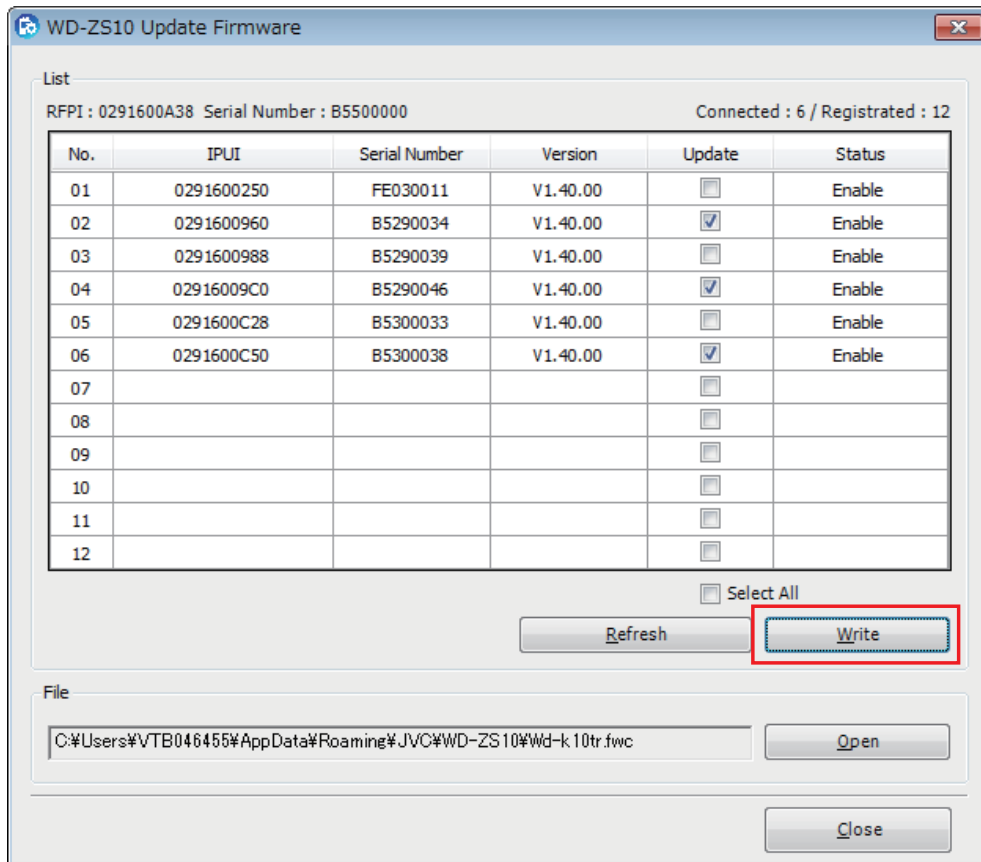


The selected file name is displayed in the firmware Update screen.

Note

- Select a firmware file for the sub unit.

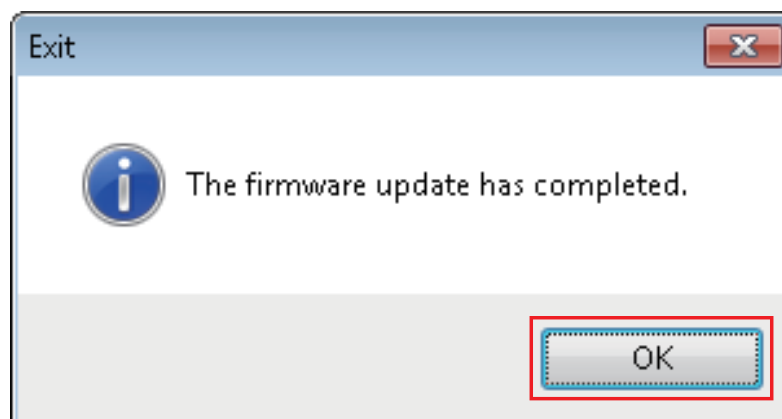
- 8** Select a device to be updated using the “Update” check box in the firmware Update screen. Click [Write].



Firmware update begins.

- 9** After update for all devices has been completed, check the update complete message and click [OK].

Firmware update is complete.

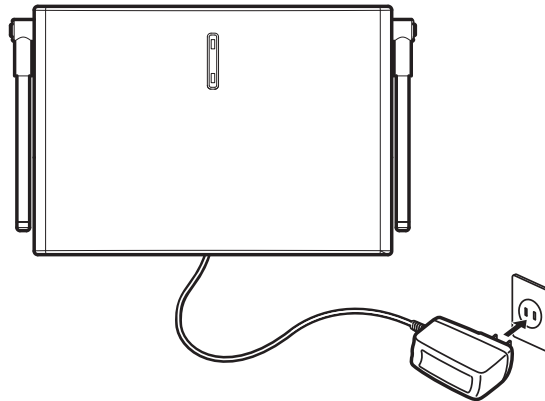


4.7 Turning On/Off the Device Power

Turning On/Off the Power of WD-K10BS

Turning On the Power

Insert the AC adapter of WD-K10BS to the AC outlet to turn on the power.



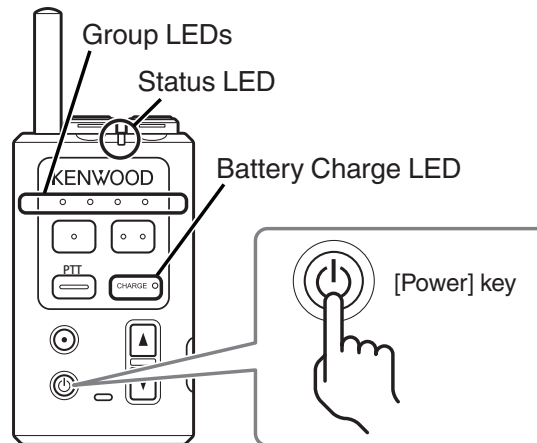
Turning Off the Power

Unplug the AC adapter of WD-K10BS from the AC outlet to turn off the power.

Turning On/Off the Power of WD-K10PBS/ WD-K10TR

Turning On the Power

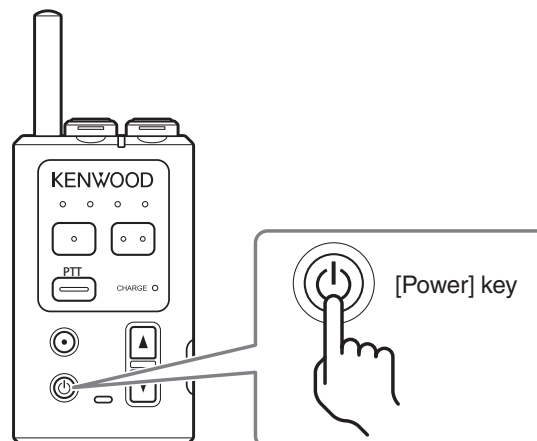
- 1 Hold down the [Power] key. Release after the Status LED (red), Group LEDs, and Battery Charge LED light up and then light off.



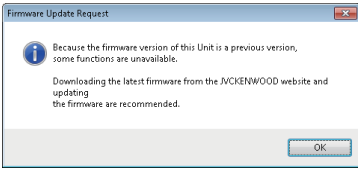
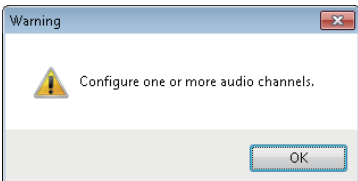
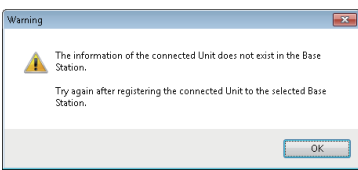
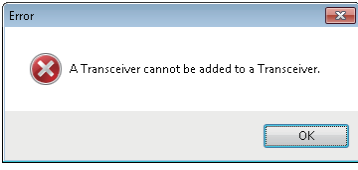
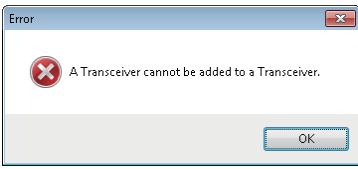
Turning Off the Power

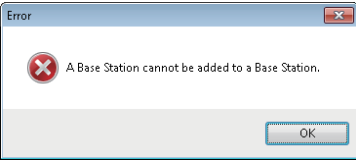
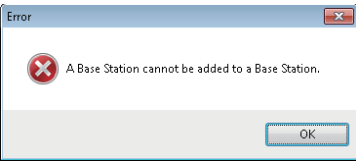
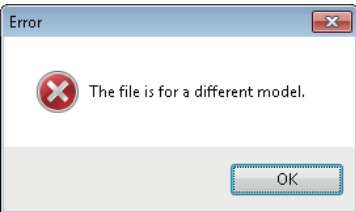
- 1 Hold down the [Power] key until the Status LED lights off.

Check that the LED lights off and is not blinking.



5.1 Troubleshooting

Problem	Cause	Solution	Reference Page
<p>The following message appears upon importing from device.</p>  <p>The dialog box titled "Firmware Update Request" contains an information icon and text: "Because the firmware version of this Unit is a previous version, some functions are unavailable. Downloading the latest firmware from the JVCケンウッド website and updating the firmware are recommended." There is an "OK" button at the bottom.</p>	The device firmware is old.	As the device firmware is old, some functions in WD-ZS10 or in the device cannot be used. Update the device to the latest firmware.	on page 62
<p>The status of the sub unit is "OTAP Disable" or "Failed" and update is not possible in Over-the-air Programming or Wireless Firmware Update.</p>	The device firmware is old.	As the device firmware is old, updating is not possible. Obtain the latest firmware and update the firmware via wired communication.	on page 63
<p>The following message appears in Group Setup.</p>  <p>The dialog box titled "Warning" contains a warning icon and text: "Configure one or more audio channels." There is an "OK" button at the bottom.</p>	An attempt has been made to save the settings without selecting a group.	Settings cannot be configured if a group is not selected. Be sure to select one or more groups.	on page 32 on page 40
<p>The following message appears and a base unit cannot be registered to a sub unit.</p>  <p>The dialog box titled "Warning" contains a warning icon and text: "The information of the connected Unit does not exist in the Base Station. Try again after registering the connected Unit to the selected Base Station." There is an "OK" button at the bottom.</p>	Information of the sub unit is not registered to the base unit.	Register the information of the sub unit to the base unit to be registered, then register the base unit to the sub unit.	on page 12
<p>The following message appears and a base unit cannot be registered to a sub unit.</p>  <p>The dialog box titled "Error" contains an error icon and text: "A Transceiver cannot be added to a Transceiver." There is an "OK" button at the bottom.</p>	A sub unit has been connected to the PC.	Check the device connected to the PC.	on page 12
<p>The following message appears and a base unit cannot be registered to a sub unit.</p>  <p>The dialog box titled "Error" contains an error icon and text: "A Transceiver cannot be added to a Transceiver." There is an "OK" button at the bottom.</p>	The device connected to the PC has been set to Transceiver Mode. (Only for WD-K10PBS)	Set it to Base Station Mode.	on page 28

<p>The following message appears and a sub unit cannot be registered to a base unit.</p> 	<p>A base unit has been connected to the PC.</p>	<p>Check the device connected to the PC.</p>	<p>on page 12</p>
<p>The following message appears and a sub unit cannot be registered to a base unit.</p> 	<p>The device connected to the PC has been set to Base Station Mode. (Only for WD-K10PBS)</p>	<p>Set it to Transceiver Mode.</p>	<p>on page 28</p>
<p>The following message appears during firmware update and update is not possible.</p> 	<p>The device connected to the PC and the model information of the firmware to be written does not match.</p>	<p>Check the device connected to the PC and the model of the firmware. For WD-K10PBS, the firmware differs depending on the Base Station Mode or Transceiver Mode. Check the mode in WD-K10PBS and the model information of the firmware.</p>	<p>on page 62</p>

KENWOOD

© 2016 JVCKENWOOD Corporation