

CBK-WA100/CBK-WA101

Wireless Adapters

SONY
make.believe

In response to the rapidly growing demand for faster and cost efficient IT and network operation, Sony is proud to introduce the CBK-WA100/CBK-WA101 to enhance the field operation and workflow. Both wireless adapters support Wi-Fi, 3G/4G, and LTE transmission to meet the needs of most shooting environments, promptly transmitting both proxy data and high-resolution*¹ data. Compatible by design, it connects with mobile devices such as smartphones and tablets*². As well as supporting TV program production in the field, these adapters are an ideal choice for ENG professionals when the speed of news gathering is critical.

*1 Requires a USB connection. Some models are not supported.

*2 Supports Android OS (Version 4.1 and later) and iOS (Version 7).



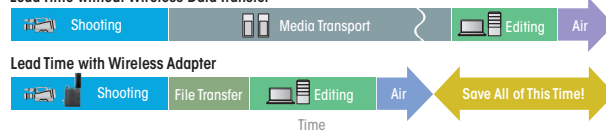
Features

Save Time and Cost

Users can transmit proxy files via Wi-Fi/3G/4G/LTE from field locations immediately after shooting. This saves considerable time and cost of content delivery, especially when the task is time critical. Also, if the camcorder is not able to create proxy data - the wireless adapter can create a proxy file which is compatible with most general viewer applications. In addition, high-resolution files can be transferred using the USB connection*³.

*³ Some models are not supported.

Lead Time without Wireless Data Transfer



Simple Installation

It's easy to install the adapter to Sony's existing camcorders and decks using BNC and DC power cables. For even simpler connection, the CBK-WA101 is designed especially for the PMW-400, requiring no cable connections of BNC and DC power cables at all, just an easy attach/detach mechanism.

When the wireless adapter is connected to camcorders/decks using a USB cable, users can enjoy the full features of the adapter such as high resolution file transmission, basic remote camera control, wireless adapter status indication on the viewfinder and more.

The wireless adapter can be used with the following models:

PMW-500/400/300/200/160/50 (with USB connection)

PMW-320, PDW-F800/700 (with HD-SDI connection)



PMW-400 Series



PMW-300K1



PMW-500/HD02



PDW-700



PMW-50

Specifications

| | CBK-WA100 (Planned availability Dec. 2013) | CBK-WA101 (Planned availability Jan. 2014) |
|------------------------|--|---|
| Weight | Approx. .48lbs (220 g) | Approx. .48lbs (220 g) |
| Dimensions (W x H x D) | 3 x 3-1/2 x 1 inches (84 x 95 x 30 mm) without projection | 3 x 3-1/2 x 2-5/32 inches (84 x 95 x 55 mm) without projection |
| Power Requirements | DC 12 V | DC 12 V |
| Power Consumption | 4.5W (exclusive of external USB devices) | 4.5W (exclusive of external USB devices) |
| Operating Temperature | +32°F to +104°F (0°C to +40°C) | +32°F to +104°F (0°C to +40°C) |
| Proxy Format (Video) | AVC/H.264 Main Profile, 4:2:0 Long GOP - 1280x720, 9M (VBR) - 640x360, 3M (VBR) - 480x270, 1M (VBR) | AVC/H.264 Main Profile, 4:2:0 Long GOP - 1280x720, 9M (VBR) - 640x360, 3M (VBR) - 480x270, 1M (VBR) |
| Proxy Format (Audio) | AAC-LC, 2ch, 128kbps for Stereo | AAC-LC, 2ch, 128kbps for Stereo |
| DC Input | 4-pin (male) | - |
| HD-SDI Input | BNC (x1) | - |
| USB | USB device mini B Type (x1), for Camcorder host A Type (x2), for Wireless LAN USB Device and 3G/4G/LTE modem | USB device mini B Type (x1), for Camcorder host A Type (x2), for Wireless LAN USB Device and 3G/4G/LTE modem |
| Recording Media* | SD Card Slot (x1) | SD Card Slot (x1) |
| Supplied Accessories | Bracket (2) Guard Bracket (1) Guard Cushion (2) IFU-WLM3 Wi-Fi Module DC Cable (1) BNC Cable (1) USB Cable (1) Fixing Screw (5) CD-ROM (incl. Operation Manual) (1) Installation Manual (1) Before Using This Unit (1) | Bracket (2) Guard Bracket (2) Guard Cushion (2) IFU-WLM3 Wi-Fi Module - USB Cable (1) - CD-ROM (incl. Operation Manual) (1) Installation Manual (1) Before Using This Unit (1) |

* Support SDHC Class4 and higher (SDXC should not be used, i.e. the maximum capacity is 32GB.)

Items not supplied in the package of Wireless Adapter

| | |
|---|---|
| USB dongle* | If you use wireless connection, you need a Wireless LAN USB Device (IEEE 802.11 b/g/n compliant) or a 3G/4G/LTE Modem. |
| Smartphone or Tablet | To view a streaming content, a terminal (a Smartphone or a Tablet) and an application software (Content Browser Mobile) are required. Recommended models : Xperia Z, Xperia Tablet Z and later Xperia models |
| Application Software (Content Browser Mobile) | Supported OS : Android 4.1 and later |
| SD media | Need a media compatible with* ¹ |
| Others | Other than the mentioned above, need a system to connect to an On-Premises Server or a Sony's recommended Cloud Service if transferring the file over WAN. |

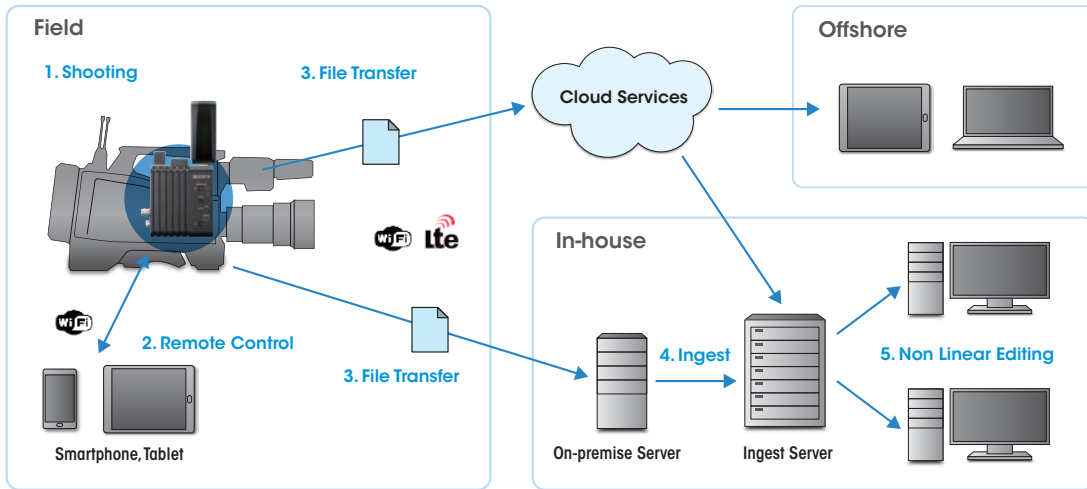
* Requires a third-party contract to transfer files via Wireless LAN/3G/4G/LTE (carrier availability varies in different countries/areas). The file transfer function does not allow simultaneous use of Wi-Fi and 3G/4G/LTE devices. A Wireless LAN USB Device and a 3G/4G/LTE Modem cannot be used simultaneously for File Transfer function.

Accessories



BP-U60T
Li-Ion Battery Pack with DC power output

CBK-WA100 / CBK-WA101 Workflow



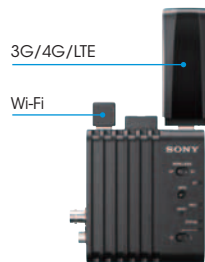
1. Install and shoot in the field

The wireless adapter can be attached to the camcorder with the Wi-Fi*4 module and/or 3G/4G/LTE*5 dongle according to the shooting needs. The adapter creates the proxy data and stores on an SD media for subsequent transmission*6.

*4 The IFU-WLM3 Wi-Fi USB device is included.

*5 Requires a third-party contract to transfer files (carrier availability varies in different countries/areas).

*6 The file transfer function does not allow simultaneous use of Wi-Fi and 3G/4G/LTE devices.



3. Select file and upload

Recorded clips can be previewed on a mobile device. User can select proxy or the high-resolution*11 file from the list and upload it to an on-premise server or to a cloud service via a mobile Wi-Fi router or 3G/4G/LTE device.

*11 A USB connection is required for high-resolution file transmission.



2. Connect to mobile devices using Wi-Fi

Users can connect the wireless adapter to a mobile device*7 using Wi-Fi. With the Content Browser Mobile*8 application, users can enjoy all of the features of the wireless adapter. For example, video streaming*9, browse file list, preview content, register metadata, change setting, select device, control camera*10, and trigger file transfer. Also, the wireless adapter itself has a web browser function for basic settings.

*7 Supports Android (Version 4.1 and later). Some features are unavailable for iOS.

*8 Content Browser Mobile is available in GooglePlay or iTunes.

*9 Not available for iOS.

*10 The camcorder and wireless adapter must be connected by USB.



(Simulated Images)

4. & 5. Ingest files uploaded from the field and edit

The file uploaded from the field can then be ingested into the NLE for editing. When multiple groups are working at the same time, it may be easier to share the content and edit via the cloud services.