



A **SHURE** Company

CU 5905 Central Unit

- Control of 250 discussion units
- Support for 2 interpretation channels
- Scrambled audio
- Web browser interface for mic control & configuration
- TCP/IP control interface
- Emergency connection (EEM)
- 4 configurable analog audio out



Description

The CU 5905 is the controller in the DDS 5900 Digital Discussion System.

It controls and supplies power to the chairman/delegate discussion units and interpreter units and operates up to 250 discussion units and 32 interpreter units in a single bus cable structure known as the DCS-LAN; a proprietary high-speed digital audio, data and power bus. All units are connected to the DCS-LAN in daisy chains using standard CAT 5e (or higher) F/UTP or U/FTP cables.

The CU 5905 features fully digital audio transmission of the floor channel, two interpretation channels and up to eight discussion microphones at the same time. The units can be combined into four groups using a built-in group matrix.

The CU 5905 features one analog audio input and four analog audio outputs, the four analog audio outputs are used for distribution of audio from the four groups, the floor channel or one of the two interpreter channels. This is used either for connection to external PA systems, for recording purposes or for connection to a language distribution system, like the DIS digital wireless infrared system.

The sound for the built-in loudspeakers in the discussion units is taken from Group A and/or from the Analog Audio In 1 XLR sockets.

Connection for Emergency Input (EEM) is available as well, using Analog Audio In 2 and the contact closure switch. When activated the signal on Analog Audio In 2 is available in the loudspeakers and in the headphones.

The OLED display on the front enables the user to setup basic system configurations in terms of the maximum number of speakers/requests, microphone operation mode etc.

All system settings are available in a web browser interface. The CU 5905 provides TCP/IP communication for external control over Ethernet.

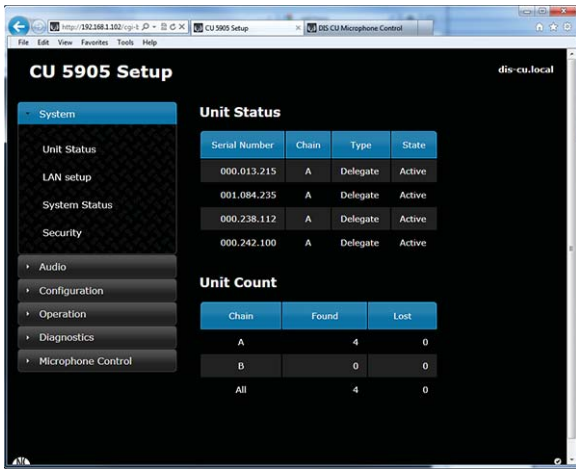
The DCS-LAN chain can be branched using repeater RP 6004 or extension unit EX 6010. Additional units can be powered using power supplies PS 6000 or extension unit EX 6010

Inserting JB 6104 junction boxes in the DCS-LAN chain enables hot plugging of single units. Each JB 6104 junction box features the connection of a single unit to each of the four outputs on the junction box.

Features

The CU 5905 has the following features:

- Fully digital audio transmission
- Support for four microphone operation modes; Automatic, FIFO Manual and VOX (Voice activated On/Off of the microphone)
- Support for delegate interrupt mode
- Auto Off of the microphones
- Scrambled audio to prevent eavesdropping
- Powers up to 60 units without the use of an additional power supply
- Control of up to 250 discussion units
- Connection of up to 32 interpreter units
- Up to eight simultaneous open microphones
- Floor + two interpretation channels
- Four analog audio outputs, configurable as a 'group out' or 'interpretation channels out'
- DCS-LAN daisy chain topology with loop-through connections or hot plug connection, when using JB 6104 junction boxes
- DCS-LAN connection using shielded CAT 5e (or higher) F/UTP or U/FTP cabling
- TCP/IP Ethernet connection for external control
- Web browser interface for easy setup of the system
- Web browser interface for microphone control, request list control and basic operational parameters
- Built-in seat table for attaching seat numbers to units
- Assigning names to the seats using the web browser



Specifications

Electrical

Power consumption	max. 150W/48V
Supply voltage for DC 5980 units	125W/48V
Sound quality	24 bit audio, 32 kHz sampling frequency
Frequency response	65 Hz-16 kHz
THD	< 0.1 %
Signal-to-noise ratio	> 85 dBA

Audio inputs

Analog audio input	One 3-pin female XLR socket (electronically balanced)
Analog audio in 2 (Emergency input - EEM)	One 3-pin female XLR socket (electronically balanced)

Audio outputs

Analog audio out	Four 3-pin male XLR sockets (electronically balanced)
Maximum load	> 1 k ohm

Interconnections

DCS-LAN	Two RJ45 female sockets
EEM	One contact closure input

System Performance

Max. number of discussion units	250
Max. number of IS units	32
Max. number of languages	2
Max. number of open "floor" microphones	8

Mechanical

Mounting	Tabletop or mounted in a 19", one-unit rack
Color	Black
Dimensions without feet (H x W x D)	44.4 x 426 x 186 mm
Weight	2800 g
Storage temperature	-20° to 60° C, 10-80% humidity
Optimal operating temperature	5° to 40° C, 35-80% humidity

PS CU External Power Supply

Main voltage	100-240 V, 50-60 Hz
Max. consumption	175 W
Total supply power	150 W
Standby consumption	<0.5 W
Supply voltage for CU 6110	48V/3A



Certifications

The DDS 5900 system in general conforms to the IEC 60914 standard, however some functionalities, when the unit is configured as interpreter unit, does not fulfill all requirements in the standard.

PS CU approvals CE, KC, CCC, cULus, TÜV

How To Order

CU 5905 Central Unit 15 09 58001

Included accessories

- PS CU External Power Supply
- Power cable, 1 piece
- 19" brackets, 1 set
- Tool for fixing GM to XLR
- Chairman overlay, 2 pieces
- Interpreter overlay, 3 pieces
- Delegate overlay, 1 piece, "Speak" button (no "Mute" button)

CU Front / Back



SHURE®

LEGENDARY
PERFORMANCE™

Shure Incorporated

5800 West Touhy Avenue
Niles, IL 60714-4608
USA
Tel. +1 847 600 2000
Fax +1 847 600 1212 (USA)
Fax +1 847 600 6446
info@shure.com

Danish Interpretation Systems A/S

Vestre Teglgade 12
DK-2450 Copenhagen SV
Denmark
Tel. +45 33 85 40 40
Fax +45 33 85 40 41
salessupport@dis.cc

DIS Middle East

LOB 15; Office 221
Jebel-Ali Free Zone
P.O. Box 17343
UAE
Tel. +971 4 88 71 915
Fax +971 4 88 71 897
dubai@dis.cc

DIS Asia Pacific

1497 Soi Latphrao 94
(Town in town 3/2)
Latphrao Rd., Plubpla
Wongtonglang
Bangkok 10310
Thailand
Tel. +662 559 3420
Fax +662 559 3424
bangkok@dis.cc