

Converter Catalog

Spring 2019



AJA CONVERTER CATALOG CONTENTS

Introduction

- 4 **AJA Mini-Matrix**
Converter Information Software
- 4 **Mini-Config Support**
Visual Configuration and Control Software

HDMI

- 5 **Hi5-12G**
12G-SDI to HDMI 2.0 Mini-Converter, Models Available with Included Fiber SFPs
- 5 **Hi5-12G-TR**
12G-SDI to HDMI 2.0 Conversion with Fiber Transceiver
- 5 **Hi5-12G-R**
12G-SDI to HDMI 2.0 Conversion with Fiber Receiver
- 5 **Hi5-4K-Plus**
4K/UltraHD-SDI to Full HDMI 2.0 Mini-Converter
- 6 **HA5-12G**
HDMI 2.0 to 12G-SDI Mini-Converter, Models Available with Included Fiber SFPs
- 6 **HA5-4K**
4K/UltraHD HDMI to 4K/Ultra HD SDI Mini-Converter
- 6 **HA5-12G -T**
HDMI 2.0 to 12G-SDI Mini-Converter, Models Available with Included Fiber SFPs
- 7 **Hi5-Plus**
3G-SDI to HDMI Mini-Converter with Embedded Audio
- 7 **Hi5-3G**
3G-SDI/Dual link SDI to HDMI 1.3a Video and Audio Mini-Converter
- 7 **HA5-Plus**
HDMI to 3G-SDI Mini-Converter with Embedded Audio
- 7 **Hi5-3D**
Dual HD-SDI Multiplexer to HDMI 1.4a and SDI Video and Audio Mini-Converter
- 8 **Hi5-Fiber**
3G-SDI over Fiber to HDMI Video and Audio Mini-Converter
- 8 **Hi5**
HD/SD-SDI to HDMI Mini-Converter with Embedded Audio
- 8 **HA5-Fiber**
HDMI to 3G-SDI over Fiber Video and Audio Mini-Converter
- 8 **HA5**
HDMI to HD-SDI/SD-SDI Mini-Converter with Embedded Audio

HDBaseT

- 9 **HB-T-HDMI**
HDMI to HDBaseT Mini-Converter
- 9 **HB-R-HDMI**
HDBaseT to HDMI Mini-Converter
- 9 **HB-T-SDI**
SDI to HDBaseT Converter
- 9 **HB-R-SDI**
HDBaseT to SDI Converter
- 10 **RovoRx-SDI**
HDBaseT to 6G/3G-SDI and HDMI Converter with POH, Genlock
- 10 **RovoRx-HDMI**
HDBaseT to HDMI Converter with PoH
- 11 **LUT-Box**
In-Line Color Transform
- 11 **Mini-Connect**
In-Line Color Transform

SCALING

- 12 **HDP3**
3G-SDI to DVI-D and Audio Converter
- 12 **4K2HD**
4K/UltraHD to HD Down-Converter
- 12 **UDC**
Up, Down, Cross-Converter
- 12 **HD10MD4**
HD/SD-SDI to SDI/Analog Down-Converter

INFRASTRUCTURE

- 13 **12GDA**
12G/HD/SD-SDI Reclocking Distribution Amplifier
- 13 **3G-AM**
3G-SDI 8-channel AES Embedder/Disembedder
- 13 **12GM**
12G-SDI to/from SDI Muxer/Demuxer
- 13 **3G-AMA**
3G-SDI Analog Audio Embedder/Disembedder
- 14 **3GDA**
1x6 3G/HD/SD Reclocking Distribution Amplifier
- 14 **ADA4**
4-channel Bidirectional Audio A/D and D/A Converter
- 14 **3GM**
3G/1.5G HD-SDI Multiplexer
- 14 **C10DA**
Analog Video 1x6 Distribution Amplifier

- 15 **GEN10**
HD/SD Sync Generator
- 15 **HD5DA**
1x4 HD/SD-SDI Distribution Amplifier/Repeater

ANALOG

- 16 **HD10A-Plus**
HD Analog to HD-SDI Converter
- 16 **HD10CEA**
HD/SD-SDI to Analog Audio/Video
- 16 **HD10AVA**
HD/SD Analog Composite or Component Video and 4-channel Analog Audio to HD/SD-SDI with Embedded Audio
- 17 **V2Digital**
Analog Video to HD/SD-SDI Converter
- 17 **V2Analog**
HD/SD-SDI to Analog Video Converter

IP

- 18 **IPT-10G2-HDMI**
HDMI to SMPTE ST 2110 IP Video and Audio Converter
- 18 **IPR-10G2-HDMI**
SMPTE ST 2110 IP Video and Audio to HDMI Converter
- 18 **IPT-10G2-SDI**
3G-SDI to SMPTE ST 2110 IP Video and Audio Converter
- 18 **IPR-10G2-SDI**
SMPTE ST 2110 IP Video and Audio to SDI Converter
- 19 **IPT-1G-SDI**
3G-SDI Video and Audio to JPEG 2000 IP Converter
- 19 **IPR-1G-SDI**
JPEG 2000 IP Video and Audio to 3G-SDI Converter
- 19 **IPT-1G-HDMI**
HDMI Video and Audio to JPEG 2000 IP Converter
- 19 **IPR-1G-HDMI**
JPEG 2000 IP Video and Audio to HDMI Converter

SCAN

- 20 **ROI-DVI**
DVI to 3G-SDI Scan Converter with Region of Interest
- 20 **ROI-DP**
Display Port to 3G-SDI Scan Converter with Region of Interest
- 20 **ROI-HDMI**
HDMI to 3G-SDI Scan Converter with Region of Interest
- 20 **ROI-SDI**
3G-SDI to HDMI/3G-SDI Scan Converter with Region of Interest

AJA CONVERTER CATALOG CONTENTS

OPTICAL FIBER

- 21 **Single, Dual, and Quad channel SDI/Fiber Converters**
- 22 **FiDO SFP Options**
- 22 **Multi-Mode SFP Modules**
Single and Dual channel LC Fiber; Transmitters, Receivers and Transceivers
- 22 **CWDM SFP Modules**
Dual channel LC Fiber Transmitters
- 23 **FiDO-T-12G**
1-Channel 12G-SDI/LC Single Mode LC Fiber Transmitter
- 23 **FiDO-2T-12G**
2-Channel 12G-SDI to Single Mode LC Fiber Transmitter
- 23 **FiDO-TR-12G**
1-Channel 12G-SDI/LC Single Mode LC Fiber Transceiver
- 23 **FiDO-R-12G**
1-Channel Single Mode LC Fiber to 12G-SDI Receiver
- 23 **FiDO-2R-12G**
2-Channel Single Mode LC Fiber to 12G-SDI Receiver
- 24 **FiDO-TR**
1-Channel 3G-SDI/LC Single Mode LC Fiber Transceiver
- 24 **FiDO-T**
1-Channel 3G-SDI to Single Mode LC Fiber Transmitter
- 24 **FiDO-R**
1-Channel Single Mode LC Fiber to 3G-SDI Receiver
- 24 **FiDO-TR-MM**
1-Channel 3G-SDI/LC Multi-Mode LC Fiber Transceiver
- 24 **FiDO-T-MM**
1-Channel 3G-SDI to Multi-Mode LC Fiber Transmitter
- 24 **FiDO-R-MM**
1-Channel Multi-Mode LC Fiber to 3G-SDI Receiver
- 25 **FiDO-2T**
2-Channel 3G-SDI to Single Mode LC Fiber Transmitter
- 25 **FiDO-2R**
2-Channel Single Mode LC Fiber to 3G-SDI Receiver
- 25 **FiDO-2T-X**
2-Channel 3G-SDI to Single Mode LC Fiber Transmitter for CWDM SFPs
- 25 **FiDO-2T-MM**
2-Channel 3G-SDI to Multi-Mode LC Fiber Transmitter
- 25 **FiDO-2R-MM**
2-Channel Multi-Mode LC Fiber to 3G-SDI Receiver
- 26 **FiDO-4T**
4-Channel 3G-SDI to Single Mode LC Fiber Transmitter
- 26 **FiDO-4R**
4-Channel Single Mode LC Fiber to 3G-SDI Receiver
- 26 **FiDO-4T-X**
4-Channel 3G-SDI to Single Mode LC Fiber Transmitter for CWDM SFPs

- 26 **FiDO-4T-MM**
4-Channel 3G-SDI to Multi-Mode LC Fiber Transmitter
- 26 **FiDO-4R-MM**
4-Channel Multi-Mode LC Fiber to 3G-SDI Receiver
- 27 **FiDO-T-SC**
1-Channel 3G-SDI to Single Mode SC Fiber Transmitter, with SDI Loop Out
- 27 **FiDO-T-ST**
1-Channel 3G-SDI to Single Mode ST Fiber Transmitter, with SDI Loop Out
- 27 **FiDO-4T-ST**
4-Channel 3G-SDI to Single Mode ST Fiber Transmitter
- 27 **FiDO-R-SC**
1-Channel Single Mode SC Fiber to 3G-SDI Receiver, with Dual SDI Output
- 27 **FiDO-R-ST**
1-Channel Single Mode ST Fiber to 3G-SDI Receiver, with Dual SDI Outputs
- 27 **FiDO-4R-ST**
4-Channel Single Mode ST Fiber to 3G-SDI Receiver

Mini-Converter Accessories

- 28 **DWP-U-R1**
- 28 **Universal Power Supply**
- 28 **DRM**
Mini-Converter Rackmount Frame
- 28 **PWR-CABLE**
P-TAP to 2x AJA Mini-Converter Power Connectors

The Following AJA Mini-Converter Types can be Installed in the DRM:

- 29 **P-TAP-CBL**
P-Tap to AJA Mini-Converter Power Cable
- 29 **RMB**
Rackmount Bracket
- 29 **CMP**
Converter Mounting Plate
- 29 **AJA Mini-Config**
- openGEAR**
- 30 **OG-Hi5-4K-Plus**
openGear 4K/UltraHD (4x 3G-SDI) to full HDMI 2.0 Converter
- 30 **OG-4K2HD**
openGear 4K/UltraHD to 3G-SDI and HDMI Down-Converter
- 30 **OG-HA5-4K**
openGear 4K/UltraHD HDMI to 4K/UltraHD (4x 3G-SDI) Converter
- 30 **OG-UDC**
openGear HD/SD Up, Down, Cross-Converter

- 31 **OG-3G-AMD**
openGear 3G-SDI 8-Channel 24-bit AES Embedder/Disembedder
- 31 **OG-3GDA-1x9**
openGear 1x9 3G-SDI Reclocking DA
- 31 **OG-3G-AMA**
openGear 3G-SDI Analog Audio Embed/Disembed
- 31 **OG-3GDA-2x4**
openGear 2x4 3G-SDI Reclocking DA
- 32 **OG-FiDO-T**
openGear 1-channel 3G-SDI to Single Mode LC Fiber Transmitter
- 32 **OG-FiDO-TR**
openGear 1-channel 3G-SDI/LC Single Mode LC Fiber Transceiver
- 32 **OG-FiDO-R**
openGear 1-channel Single Mode LC Fiber Receiver
- 33 **OG-FiDO-2T**
openGear 2-channel 3G-SDI to Single Mode LC Fiber Transmitter
- 33 **OG-FiDO-2T-X**
openGear 2-channel 3G-SDI to Single Mode LC Fiber Transmitter for CWDM
- 33 **OG-FiDO-2R**
openGear 2-channel 3G-SDI to Single Mode LC Fiber Receiver
- 33 **OG-FiDO-TR-MM**
openGear 1-channel 3G-SDI/LC Multi-Mode LC Fiber Transceiver
- 34 **OG-FiDO-T-MM**
openGear 1-channel 3G-SDI to Multi-Mode LC Fiber Transmitter
- 34 **OG-FiDO-2T-MM**
openGear 2-channel 3G-SDI to Multi-Mode LC Fiber Transmitter
- 34 **OG-FiDO-R-MM**
openGear 1-channel Multi-Mode LC Fiber to 3G-SDI Receiver
- 34 **OG-FiDO-2R-MM**
openGear 2-channel Multi-Mode LC Fiber to 3G-SDI Receiver

AJA Mini-Converters

Complete Range of Stand-Alone Converters

From production to post and live events, AJA Mini-Converters offer the most complete range of compact, standalone conversion and infrastructure solutions, designed to the highest standards in reliability and quality. Our converters cover a full range of 4K, HD and SD capabilities to meet your needs.

AJA Quality – Guaranteed

AJA Converters have earned a reputation for the highest quality and best levels of reliability. Built to the exacting standards of all AJA hardware, AJA Converters are backed by our world class support network, Five year international warranty and AJA's advanced replacement policy.

Universal Power Supply

All AJA Mini-Converters ship with a universal power supply that includes international plug connections for use around the world.

5 LEGENDARY
YEAR
WARRANTY



AJA Mini-Matrix

Find the Right AJA Converter for Any Situation

Information on the complete line of AJA Converters is now available as a mobile app on iOS. The AJA Converter product line is extensive, and this app helps you find the right Converter for any situation, wherever you are.

Individual products have links back to the main AJA website for more details, and you can email product information directly from the app. The free AJA Mini-Matrix app for iPad and iPhone is available now in the Apple App Store.

[Download App](#)

[View Online](#)



USB and Mini-Config Support

Visual Configuration and Control

AJA's free Mini-Config software can be used with any USB enabled AJA Mini-Converter and provides an easy to use graphic interface with detailed information about the current input and output formats. Control all the parameters of any supported AJA Mini-Converter as well as loading firmware updates from AJA that add new features and functionality.

[View Online](#)

HDMI | Mini-Converters

AJA Hi5 and HA5 Mini-Converters for SDI to HDMI or HDMI to SDI conversion are amongst the most popular AJA converters in AJA's lineup. AJA HDMI Mini-Converters offer support for raster sizes all the way from SD and HD to 4K/ UltraHD, as well as connections for the latest 12G-SDI and HDMI 2.x standards.

AJA Mini-Matrix: Converter Search Software

www.aja.com/software/mini-matrix



4K | HDR

[View Online](#)

Hi5-12G \$795

12G-SDI to HDMI 2.0 Mini-Converter, Models Available with Included Fiber SFPs

- Convert 12G-SDI single link input to HDMI 2.0b 4K 60p
- Fully supports HDMI v2.0b to the maximum 18 Gbps for 4K/UltraHD 50/59.94/60 4:2:2/4:4:4
- Supports Two Sample Interleave (2SI) 4K/UltraHD/HD mapping
- Lock LEDs shows type of input source, SD-SDI (Green), HD-SDI (Red), 3G-SDI (Amber), 6G-SDI (Purple) or 12G-SDI (Blue).
- Embedded audio support 8-channel 24-bit
- Analog audio output (2x RCA Style Connector)
- HDR support with HDR10 and HLG
- Configure via USB port and supplied Mini-Config software



4K | HDR

[View Online](#)

Hi5-12G-R \$995

12G-SDI to HDMI 2.0 Conversion with Fiber Receiver

- Pristine image fidelity and HFR support up to 60p for 4K/UltraHD 12G-SDI to HDMI 2.0 conversion with a single cable
- Generates HDR10 metadata in accordance with HDMI v2.0b/CTA-861-G and supports HLG over HDMI
- Provides a monitoring connection from professional 4K devices using 12G-SDI over coaxial or Fiber LC outputs to new displays with HDMI 2.0 inputs, for cost effective monitoring
- 12G-SDI single link input with a reclocked SDI loop out for simpler SDI confidence monitoring or pass on for SDI pipelines
- Ships with a Fiber LC single channel SFP receiver for extending 4K signals over long distances
- Configure via USB port and supplied Mini-Config software



4K | HDR

[View Online](#)

Hi5-12G-TR \$1,195

12G-SDI to HDMI 2.0 Conversion with Fiber Transceiver

- Pristine image fidelity and HFR support up to 60p for 4K/UltraHD 12G-SDI to HDMI 2.0 conversion with a single cable
- Generates HDR10 metadata in accordance with HDMI v2.0b/CTA-861-G and supports HLG over HDMI
- Simple monitoring connection from professional 4K devices using 12G-SDI outputs to new displays with HDMI 2.0 inputs, for cost effective monitoring
- Features a 12G-SDI single link input with a reclocked SDI loop out and includes a Fiber LC single channel SFP transceiver which delivers a 4K/UltraHD SDI or Fiber source signal to an HDMI destination with pass on of the source through SDI or Fiber to a secondary destination
- Ships with a Fiber LC single channel SFP transceiver for extending 4K signals over long distances
- Configure via USB port and supplied Mini-Config software



4K | HDR

[View Online](#)

Hi5-4K-Plus \$595

4K/UltraHD-SDI to Full HDMI 2.0 Mini-Converter

- Fully supports HDMI v2.0 to the maximum 18 Gbps for 4K/UltraHD 50/59.94/60 4:2:2/4:4:4 and HDR 10
- Supports Quad 3G & 1.5G/Dual Link 3G/3G-SDI
- Supports both quadrant (square division) and 2SI (two sample interleave) 4K mapping
- Embedded audio support 8-channel 24-bit
- Configure via USB port and supplied Mini-Config software

HDMI | Mini-Converters

AJA Hi5 and HA5 Mini-Converters for SDI to HDMI or HDMI to SDI conversion are amongst the most popular AJA converters in AJA's lineup. AJA HDMI Mini-Converters offer support for raster sizes all the way from SD and HD to 4K/ UltraHD, as well as connections for the latest 12G-SDI and HDMI 2.x standards.

AJA Mini-Matrix: Converter Search Software

www.aja.com/software/mini-matrix



4K | HDR

[View Online](#)

HA5-12G \$795

HDMI 2.0 to 12G-SDI Mini-Converter, Models Available with Included Fiber SFPs

- Convert HDMI 2.0b up to 4K/UltraHD 60p to 12G-SDI with a second mirrored output
- Supports up to 60p input at 4:4:4/4:2:2/4:2:0
- HDMI EDID Emulation
- Two Sample Interleave (2SI) 4K/UltraHD source mapping
- Analyzes HDR Infoframe data coming in over HDMI in accordance with HDMI v2.0b/CTA-861-G
- HDR Infoframe decoder as defined in CTA-861-G and HDMI v2.0b
- Embedded audio can be selected from the HDMI or Analog audio inputs
- The Lock LED adjacent to the HDMI input connector indicates by color the detected signal type. Off is no signal, Green is SD-SDI, Red is HD-SDI, Amber is 3G-SDI, Purple is 6G-SDI, and Blue is 12G-SDI.
- Configure via USB port and supplied Mini-Config software



4K | HDR

[View Online](#)

HA5-12G -T \$995

HDMI 2.0 to 12G-SDI Mini-Converter, Models Available with Included Fiber SFPs

- Convert HDMI 2.0b up to 4K 60p to 12G-SDI with a second mirrored output
- Includes a single channel Fiber 12G LC transmitter, which extends 12G-SDI signals over long distances (10 km Single Mode)
- HA5-12G-T ships with FiberLC-1T-12G SFP installed
- Support for up to 60p input at 4:4:4/4:2:2/4:2:0
- HDMI EDID Emulation
- Two Sample Interleave (2SI) 4K/UltraHD source mapping
- Analyzes HDR Infoframe data coming in over HDMI in accordance with HDMI v2.0b/CTA-861-G
- HDR Infoframe decoder as defined in CTA-861-G and HDMI v2.0b
- Embedded audio can be selected from the HDMI or Analog audio inputs
- The Lock LED adjacent to the HDMI input connector indicates by color the detected signal type. Off is no signal, Green is SD-SDI, Red is HD-SDI, Amber is 3G-SDI, Purple is 6G-SDI, and Blue is 12G-SDI.
- Configure via USB port and supplied Mini-Config software



4K | HDR

[View Online](#)

HA5-4K \$595

4K/UltraHD HDMI to 4K/UltraHD SDI Mini-Converter

- Supports HDMI 2.0 up to 2160p 60
- 4K/UltraHD conversion to quad or dual 3G SDI out
- 3G or HD conversion to single 3G SDI out
- Supports quadrant (square division) and 2SI (two sample interleave) 4K mapping
- 2-channel embedded audio
- Lock LED shows type of input source, SD (green), HD (red), or 4K/UltraHD (orange)
- Configure via USB port and supplied Mini-Config software

HDMI | Mini-Converters



Hi5-Plus \$395

3G-SDI to HDMI Mini-Converter with Embedded Audio

- Supports HDMI v1.4
- Easily integrate HDMI devices into SDI workflows
- 3G capability for high data rate signals
- Compact size fits easily in small spaces
- 16-channel embedded SDI and 8-channel HDMI audio
- 2-channel RCA analog audio output
- Configure via USB port and supplied Mini-Config software

[View Online](#)



HA5-Plus \$395

HDMI to 3G-SDI Mini-Converter with Embedded Audio

- HDMI to 3G/HD/SD-SDI
- Full HDMI support including embedded audio
- Equalized HDMI input supports long HDMI cables up to 30m, 24 gauge
- PLL clock filtering for low jitter SDI outputs
- Lock LED shows type of input source, SD (green) or HD (red)
- HDMI v1.2 standard
- 1m HDMI cable included
- Configure via USB port and supplied Mini-Config software

[View Online](#)



Hi5-3G \$595

3G-SDI/Dual Link SDI to HDMI 1.3a Video and Audio Mini-Converter

- 3G/Dual Link/HD/SD-SDI to HDMI
- Additional 2-channel RCA analog audio output (User assignable channels)
- Full HDMI 1.3a support including:
 - Deep color 30 and 36-bit video per pixel (24-bit also supported)
 - 2 or 8-Channels of embedded audio
- 1m HDMI cable supplied
- Configure via USB port and supplied Mini-Config software

[View Online](#)



Hi5-3D \$495

Dual HD-SDI Multiplexer to HDMI 1.4a and SDI Video and Audio Mini-Converter

- HD-SDI to HDMI 1.4a with additional SDI output
- Non 3D HD/SD-SDI pass through to HDMI
- 10-bit HDMI 1.4a support including 3D and embedded audio
- Additional 2-channel RCA jack audio output
- Configure via USB port and supplied Mini-Config software

[View Online](#)

HDMI | Mini-Converters



Hi5-Fiber \$695

3G-SDI over Fiber to HDMI Video and Audio Mini-Converter

- Fiber optic HD/SD-SDI to HDMI up to 10 km (32,808 ft)
- Supports single mode 1310 nm fiber optic cable with ST receiver
- Full HDMI support including embedded audio
- Additional 2-channel RCA jack audio output
- No configuration necessary
- HDMI v1.2 standard
- 1m HDMI cable included

[View Online](#)



HA5-Fiber \$695

HDMI to 3G-SDI over Fiber Video and Audio Mini-Converter

- HDMI to 3G-SDI over fiber up to 10 km (32,808 ft)
- Supports single mode 1310 nm fiber optic cable with ST transmitter
- Full HDMI input support including embedded audio
- Additional 2-channel RCA style analog audio (-10dBu nominal) input
- No configuration necessary
- 1m HDMI cable included

[View Online](#)



Hi5 \$345

HD/SD-SDI to HDMI Mini-Converter with Embedded Audio

- HD/SD-SDI to HDMI
- Full HDMI support including embedded audio
- Additional 2-channel RCA jack audio output
- Equalized looping HD/SD-SDI output
- No configuration necessary
- HDMI v1.2 standard
- 1m HDMI cable included

[View Online](#)



HA5 \$345

HDMI to HD-SDI/SD-SDI Mini-Converter with Embedded Audio

- HDMI to HD/SD-SDI
- Full HDMI support including embedded audio
- Equalized HDMI input supports long HDMI cables up to 30m, 24 gauge
- PLL clock filtering for low jitter HD/SD-SDI outputs
- Lock LED shows type of input source, SD (green) or HD (red)
- HDMI v1.2 standard
- 1m HDMI cable included

[View Online](#)

HDBaseT | Mini-Converters

AJA's HDBaseT line of Mini-Converters offer an easy solution for extending video signals up to 100 meters over Cat 5 (or better) cable, utilizing the industry standard HDBaseT protocol. Bidirectional IR and RS-232 for device control is also supported, making these Mini-Converters ideal in a variety of scenarios including: fixed installation AV, digital signage, live events, postproduction/network/studio environments and on-set.

AJA Mini-Matrix: Converter Search Software

www.aja.com/software/mini-matrix



HB-T-HDMI \$395

HDMI to HDBaseT Mini-Converter

- HDBaseT 4K/UltraHD Signal Extender
- Converts UltraHD, 4K or HD HDMI to HDBaseT
- Extend uncompressed 4K or HD HDMI signal up to 100m over Cat 5 (or better)
- Wide support for VESA (Computer) formats and DVI compatibility (with adapter)
- IR IN and OUT
- RS-232 device control connection

[View Online](#)



HB-T-SDI \$595

SDI to HDBaseT Converter

- HDBaseT HD/SD Signal Extender
- Converts SDI to HDBaseT
- Extend HD/SD-SDI signal up to 100m over Cat 5 (or better)
- Wide support for VESA (Computer) formats and DVI compatibility (with adapter)
- IR IN and OUT
- RS-232 device control connection

[View Online](#)



HB-R-HDMI \$395

HDBaseT to HDMI Mini-Converter

- HDBaseT 4K/UltraHD Signal Extender
- Converts HDBaseT to HDMI
- Extend uncompressed 4K or HD HDMI signal up to 100m over Cat 5 (or better)
- Wide support for VESA (Computer) formats and DVI compatibility (with adapter)
- IR IN and OUT
- RS-232 device control connection

[View Online](#)



HB-R-SDI \$595

HDBaseT to SDI Converter

- HDBaseT HD/SD Signal Extender
- Converts HDBaseT to SDI
- Extend HD/SD-SDI signal up to 100m over Cat 5 (or better)
- Wide support for VESA (Computer) formats and DVI compatibility (with adapter)
- IR IN and OUT
- RS-232 device control connection

[View Online](#)

HDBaseT | Mini-Converters



[View Online](#)

RovoRx-SDI \$995

HDBaseT to 6G/3G-SDI and HDMI Converter with POH, Genlock

- HDBaseT 4K/UltraHD Signal Extender
- Converts HDBaseT to HDMI
- Extend uncompressed 4K or HD HDMI signal up to 100m over Cat 5 (or better)
- Wide support for VESA (Computer) formats and DVI compatibility (with adapter)
- IR IN and OUT
- RS-232 device control connection
- Designed for the AJA RovoCam



[View Online](#)

RovoRx-HDMI \$495

HDBaseT to HDMI Converter with PoH

- HDBaseT 4K/UltraHD Signal Extender
- Converts UltraHD, 4K or HD HDMI to HDBaseT
- Extend uncompressed 4K or HD HDMI signal up to 100m over Cat 5 (or better)
- Wide support for VESA (Computer) formats and DVI compatibility (with adapter)
- IR IN and OUT
- RS-232 device control connection
- Designed for the AJA RovoCam

LUT-box | Mini-Converter

Load 3D LUTs into LUT-box to adjust the color look for any source signal with simultaneous outputs to HD HDMI and SDI monitors from a single LUT-box.

AJA Mini-Matrix: Converter Search Software
www.aja.com/software/mini-matrix



LUT-box \$695

In-Line Color Transform

- Ensure proper image monitoring on-set or in the studio
- Simultaneous SDI and HDMI outputs
- 3D LUT support at 17x17x17
- +5 to 20V DC regulated, 8 watts max
- 12-bit processing
- 16-channel embedded SDI and 8-channel HDMI audio
- 2-channel RCA analog audio output
- Configure via USB port and supplied Mini-Config software

[View Online](#)

Mini-Connect | Mini-Converter

The AJA Mini-Connect device enables control of up to 4 USB-enabled AJA ROI Mini-Converters over a single Ethernet connection. Mini-Connect integrates with your existing Ethernet network to provide access using any web browser for easy configuration and control of ROI Mini-Converters anywhere in your facility.



Mini-Connect \$345

In-Line Color Transform

- Remote control of AJA ROI Devices via Ethernet
- Connect up to 4 USB enabled AJA ROI Mini-Converters
- Integrated web server
- Web based interface, accessible from any connected web browser on any platform

[View Online](#)

SCALING | Mini-Converters

AJA Scaling converters provide high quality conversion for an entire source image for a range of needs, whether from 4K to HD, up, down or cross-conversion between SD and HD formats or even HD to DVI conversion for driving DVI monitors from video sources.

AJA Mini-Matrix: Converter Search Software

www.aja.com/software/mini-matrix



HDP3 \$695

3G-SDI to DVI-D and Audio Converter

- 3G-SDI to DVI-D supports up to 1080p60
- Automatically adapts to popular LCD/DLP/Plasma monitors (and projectors) up to 1920 x 1200 and 1080p
- High quality scaling engine for proper display of 4:3 or 16:9 content
- 1:1 scaling for suitable monitor configurations
- 1:1 pixel mapping when selected
- 2-channel RCA analog audio output (user assignable channels)
- HD-SDI/SDI looping output
- Configure via USB port and supplied Mini-Config software

[View Online](#)



UDC \$695

Up, Down, Cross-Converter

- Converts between 3G, HD, and SD formats
- Supports 1080p50, 60
- Very high quality conversions
- Built-in frame synchronizer
- 8-channel embedded audio
- HDMI output with 8-channel audio
- 2-channel RCA analog audio output
- Reference input
- Configure via USB port and supplied Mini-Config software

[View Online](#)



4K

4K2HD \$795

4K/UltraHD to HD Down-Converter

- Down-conversion to support 4K on HD-SDI and HDMI devices
- Supports HDMI v1.4 up to 1080p 59.94, 60 4:2:0
- 4K/UltraHD inputs using quad or dual 3G SDI
- Supports 3G/Dual Link/HD/SD-SDI
- Simultaneous SDI and HDMI outputs
- True 4K downscaled and cropped for HD output
- Center cut of original 4K frame supported for focus checks
- Supports quadrant (square division) and two sample interleave 4K mapping
- Configure via USB port and supplied Mini-Config software

[View Online](#)



HD10MD4 \$995

HD/SD-SDI to SDI/Analog Down-Converter

- Low cost broadcast quality 10-bit HD to SD down-converter
- Multi-standard HD-SDI or SDI Input
- Equalized loop through HD/SD-SDI output
- SDI and component/composite analog outputs
- 3:2 pulldown for 1080p 23.98 and 1080psf 23.98 inputs
- Full 10-bit data path, multipoint interpolation
- Configurable for 16:9 or 4:3 monitors
- Letterbox and crop modes
- 4:3 safe area graphic
- Passes 8-channel embedded audio, 4-channel on down-convert
- External DIP switch configuration
- Configure via USB port and supplied Mini-Config software

[View Online](#)

INFRASTRUCTURE | Mini-Converters

AJA's Infrastructure Mini-Converters provide a wide range of options for common infrastructure and point of use needs. Explore your options for Distribution Amplification, Audio Embedding/Disembedding, Audio Digital to Analog and Analog to Digital conversion, Multiplexing and Sync Generation with support for blackburst, bi-level, tri-level and equalization.

AJA Mini-Matrix: Converter Search Software

www.aja.com/software/mini-matrix



12GDA \$495

12G/HD/SD-SDI Reclocking Distribution Amplifier

- Compact 12G-SDI distribution
- Six separately reclocked outputs
- Support for HDR – High Dynamic Range video
 - 12 Gbps, 70m
 - 6 Gbps, 100m
 - 3 Gbps, 140m
 - 1.5 Gbps, 200m
 - 270 Mbps, 300m
- 12G/6G/3G/HD/SD-SDI input, autosensing
- Passes all ancillary data

4K | HDR

[View Online](#)



12GM \$895

12G-SDI to/from SDI Muxer/Demuxer

- Compact 12G-SDI to/from quad-link 3G-SDI conversion and 6G-SDI to/from quad-link 1.5G-SDI
- SMPTE 2082 inputs and outputs configurable to SMPTE 425 inputs and outputs
- Two Sample Interleave (2SI) to Square Division (Quadrant) pixel mapping
- Square Division (Quadrant) to Two Sample Interleave (2SI) pixel mapping
- Input signal diagnostics
- Input timing analyzer for quad-link signals
- Configurable as a 1x4 DA for 12G, 6G, 3G and 1.5G bit rates
- Automatic input equalization and output reclocking

4K | HDR

[View Online](#)



3G-AM \$795

3G-SDI 8-Channel AES Embedder/Disembedder

- 3G-SDI embedder/disembedder
- 8-channel AES I/O
- Supplied breakout cables for balanced AES - XLR connectors
- Configure via USB port and supplied Mini-Config software

[View Online](#)



3G-AMA \$795

3G-SDI Analog Audio Embedder/Disembedder

- 3G-SDI embedder/disembedder
- 4-channel balanced analog audio I/O
- Supplied XLR breakout cable
- Configure via USB port and supplied Mini-Config software

[View Online](#)

INFRASTRUCTURE | Mini-Converters



3GDA \$395

1x6 3G/HD/SD Reclocking Distribution Amplifier

- Compact SD/HD distribution
- Six separately buffered outputs
- Support for SDR – Standard Dynamic Range video
- 3G cable equalization (1694 coax)
- SD: 270mb, 350m, HD: 1.5Gb, 200m
- 3G/HD/SD-SDI input, autosensing
- Passes all ancillary data

[View Online](#)



3GM \$495

3G/1.5G HD-SDI Multiplexer

- Compact 3G to/from 1.5G conversion
- SMPTE 425M-AB inputs, 3G outputs configurable to A or B
- Converts SMPTE 425M A to/from SMPTE 425M B
- Provides SMPTE 292 monitor output for dual 1.5G or 3G inputs
- Fully equalizing and reclocking with jitter attenuation
- If SMPTE 292M is input, all outputs are 1.5G SMPTE 292M

[View Online](#)



ADA4 \$390

4-Channel Bidirectional Audio A/D and D/A Converter

- 4 Simultaneous A/D and D/A, or AES Synchronizer
- Full time AES11 low jitter reference output
- Up to 4-channels of balanced analog to AES/EBU audio
- Up to 4-channels of AES/EBU to balanced analog audio
- Supplied XLR breakout cable AES11/wordclock/tri-level sync
- Color black reference loop
- Adjustable audio levels
- Sample rate conversion between 96 kHz and 48 kHz DIP switch configuration

[View Online](#)

NOTE: Breakout Cable Included



C10DA \$175

Analog Video 1x6 Distribution Amplifier

- Compact 1x6 analog DA
 - NTSC
 - PAL
- May be used to distribute tri-level sync when sync is fed into the Video Input for HD workflows
- 1 Analog, differential, 1x BNC Input
- 6 analog, 6x BNC outputs
- Gain: 3dB, -2dB, -1dB, 0dB, +1dB, +2dB, or +3dB, +/- 0.3dB

[View Online](#)

INFRASTRUCTURE | Mini-Converters



GEN10 \$345

HD/SD Sync Generator

- HD bi-level/tri-level sync generation
- SD Color Black or Color Bars
- Two groups of independently switchable outputs allow simultaneous HD and SD sync generation
- AES-11 output switchable between silence and tone
- Multiple outputs can synchronize entire systems without requiring a sync DA

[View Online](#)



HD5DA \$195

1x4 HD/SD-SDI Distribution Amplifier/Repeater

- Compact HD-SDI/SDI Distribution
- Four separately buffered HD-SDI/SDI outputs
- Auto equalization
- Beldon 1694 cable, HD 125m, SD 300m
- Acts as low cost repeater
- Automatic multi-standard 143/177/270 Mb, 1.5 Gb
- Miniature size

[View Online](#)

ANALOG | Mini-Converters

AJA's Analog Mini-Converters provide simple convenient solutions for Analog to Digital and Digital to Analog conversion for both Video and Audio, including support for composite, component and HD Analog to HD Digital conversion.

AJA Mini-Matrix: Converter Search Software

www.aja.com/software/mini-matrix



HD10A-Plus \$695

HD Analog to HD-SDI Converter

- High quality 10-bit HDTV A/D Conversion
- Full bandwidth component HD RGB or YPbPr input
- 3 HD-SDI Outputs
- Multi-standard
- SD mode support
- Internal or external sync
- External DIP switch configuration

[View Online](#)



HD10AVA \$695

HD/SD Analog Composite or Component Video and 4-Channel Analog Audio to HD/SD-SDI with Embedded Audio

- Converts HD or SD analog video to SDI
- Converts and embeds analog audio
- Compact size fits easily in small spaces

NOTE: Breakout Cable Included

[View Online](#)



HD10CEA \$695

HD/SD-SDI to Analog Audio/Video

- Digital to analog audio and video converter
- SD/HD-SDI with embedded audio input
- SD component or composite video outputs (SD Input) HD
- Component video outputs (HD Input)
- 4-channel balanced audio output
- Two equalized, loop through SD/HD-SDI outputs
- Selectable audio channel pair/group

Note: The HD10CEA does not up or down-convert between HD and SD

Breakout Cable Included

[View Online](#)

ANALOG | Mini-Converters



[View Online](#)

V2Digital \$345

Analog Video to HD/SD-SDI Converter

- 10-bit AJA quality analog to digital conversion
- Low power, compact size
- YPbPr/RGB component or composite input
- HD/SD-SDI output
- Configure via USB port and supplied Mini-Config software

Note: V2Digital does not up or down-convert between SD and HD resolutions. Only analog to digital signal conversion is supported.



[View Online](#)

V2Analog \$345

HD/SD-SDI to Analog Video Converter

- 10-bit AJA digital to analog conversion
- Low power, compact size
- HD/SD-SDI input
- YPbPr/RGB component or composite output
- Configure via USB port and supplied Mini-Config software

Note: V2Analog does NOT up-convert or down-convert between SD and HD resolutions. Only digital to analog signal conversion is supported.

IP | Mini-Converters

AJA IP Mini-Converters are designed for the transport, reception and decoding of IP video. Models are available for either SMPTE ST 2110 uncompressed video and audio over IP with 10 GigE connectivity, or JPEG 2000 TR-01 video and audio over 1 GigE.

Rugged, quiet and compact, these practical Mini-Converters provide the bridge between baseband and IP video for a range of applications.

AJA Mini-Matrix: Converter Search Software
www.aja.com/software/mini-matrix



[View Online](#)

IPT-10G2-HDMI \$1295

HDMI to SMPTE ST 2110 IP Video and Audio Converter

- SMPTE ST 2110 audio, video transmitter
- 1x full size (standard type A) HDMI 1.4b input
- Supports up to 1080 60p, 4:2:2, 10-bit, YCbCr
- 2x 10 GigE SFP+ cages for media LAN (providing support for ST 2022-7 "Hitless Switching") with status light
- 1x 1 GigE RJ45 socket for control LAN with status light
- NMOS and Ember+ support
- 2x RCA analog audio input
- 1x mini-USB port for initial network configuration with AJA eMini-Setup software
- Complete setup and control interface on any web browser from a built-in webserver



[View Online](#)

IPT-10G2-SDI \$1295

3G-SDI to SMPTE ST 2110 IP Video and Audio Converter

- SMPTE ST 2110 audio, video transmitter
- 1x 3G-SDI input, 1x 3G-SDI loop through out
- Supports up to 1080 60p, 4:2:2, 10-bit, YCbCr
- 2x 10 GigE SFP+ cages for media LAN (providing support for ST 2022-7 "Hitless Switching") with status light
- 1x 1 GigE RJ45 socket for control LAN with status light
- NMOS and Ember+ support
- 2x RCA analog audio input
- 1x mini-USB port for initial network configuration with AJA eMini-Setup software
- Complete setup and control interface on any web browser from a built-in webserver



[View Online](#)

IPR-10G2-HDMI \$1295

SMPTE ST 2110 IP Video and Audio to HDMI Converter

- SMPTE 2110 audio, video receiver
- HDMI Output with full size HDMI 1.4b video port
- Supports up to 1080 60p, 4:2:2, 10-bit, YCbCr
- 2x 10 GigE SFP+ cages for media LAN (providing support for ST 2022-7 "Hitless Switching") with status light
- 1x 1 GigE RJ-45 socket for control LAN with status light
- NMOS and Ember+ support
- Embedded HDMI audio output (up to eight channels)
- 2x RCA analog audio output
- 1x mini-USB port for initial network configuration with AJA eMini-Setup software
- Complete setup and control interface on any web browser from a built-in webserver



[View Online](#)

IPR-10G2-SDI \$1295

SMPTE ST 2110 IP Video and Audio to SDI Converter

- SMPTE ST 2110 audio, video receiver
- 2x 3G-SDI Outputs (Mirrored)
- Supports up to 1080 60p, 4:2:2, 10-bit, YCbCr
- 2x 10 GigE SFP+ cages for media LAN (providing support for ST 2022-7 "Hitless Switching") with status light
- 1x 1 GigE RJ-45 socket for control LAN with status light
- NMOS and Ember+ support
- Embedded SDI audio output (up to eight channels)
- 2x RCA analog audio output
- 1x mini-USB port for initial network configuration with AJA eMini-Setup software
- Complete setup and control interface on any web browser from a built-in webserver

IP | Mini-Converters



[View Online](#)

IPT-1G-SDI \$995

3G-SDI Video and Audio to JPEG 2000 IP Converter

- 1x 3G-SDI BNC input with 4:2:2 10-bits/pixel
- 1x 3G-SDI BNC loop through out with 4:2:2 10-bits/pixel
- Essence support: VSF TR-01 JPEG 2000 MPEG-2 TS workflows
- Rugged, quiet and compact
- Audio input via embedded 3G-SDI or analog RCA (selectable)
- Full 10-bit pixel processing pipeline
- Network (LAN) control and status
- Quick network setup with AJA eMini-Setup software



[View Online](#)

IPT-1G-HDMI \$995

HDMI Video and Audio to JPEG 2000 IP Converter

- 1x Full size HDMI 1.4b input 4:2:2, 10-bits/pixel
- Essence support: VSF TR-01 JPEG 2000 MPEG-2 TS workflows
- Rugged, quiet and compact
- Audio input via embedded HDMI or analog RCA (selectable)
- Full 10-bit pixel processing pipeline
- Network (LAN) control and status
- Quick network setup with AJA eMini-Setup software



[View Online](#)

IPR-1G-SDI \$795

JPEG 2000 IP Video and Audio to 3G-SDI Converter

- 1x RJ-45 (IEC 60603-7) for 1 GigE Ethernet media input
- Essence support: VSF TR-01 JPEG 2000 MPEG-2 TS workflows
- Rugged, quiet and compact
- 2x 3G-SDI BNC output with 4:2:2 10-bits/pixel
- Embedded and analog audio outputs
- Full 10-bit pixel processing pipeline
- Network (LAN) control and status
- Quick network setup with AJA eMini-Setup software



[View Online](#)

IPR-1G-HDMI \$795

JPEG 2000 IP Video and Audio to HDMI Converter

- 1x RJ-45 (IEC 60603-7) for 1 GigE Ethernet media input
- Essence support: VSF TR-01 JPEG 2000 MPEG-2 TS workflows
- Rugged, quiet and compact
- Full size HDMI 1.4 video output
- Embedded and analog audio outputs
- Full 10-bit pixel processing pipeline
- Network (LAN) control and status
- Quick network setup with AJA eMini-Setup software

SCAN | Mini-Converters

The ROI family of scan converters allow exceptionally high quality conversion of computer and video signals, including Region of Interest extraction from DVI, DP, HDMI and 3G-SDI sources for scaling and conversion to 3G-SDI and/or HDMI baseband video. With incredible image scaling and rotation, aspect ratio and frame rate conversion, ROI fulfills the need to scale sources to a desired resolution, all in real time.

AJA Mini-Matrix: Converter Search Software – www.aja.com/software/mini-matrix



ROI-DVI \$995

DVI to 3G-SDI Scan Converter with Region of Interest

- Convert computer signals to professional SDI video, with Region of Interest scaling
- User adjustable Region of Interest with interactive on-screen controls via supplied software
- Frame rate conversion
- Automatic input detection and configuration
- 3G/HD/SD-SDI output support for common SD and HD formats
- 4:3/16:9 conversion modes supported
- Embedded SDI audio output
- Reference input
- 3.5mm analog audio input embedded into SDI output
- Easy user control via USB
- Loop through DVI-D connector
- Configure via USB port and supplied Mini-Config software

[View Online](#)



ROI-HDMI \$995

HDMI to 3G-SDI Scan Converter with Region of Interest

- Convert computer signals to professional video, with Region of Interest scaling
- User adjustable Region of Interest with interactive on-screen controls via supplied software
- Frame rate conversion
- Automatic input detection and configuration
- 3G/HD/SD-SDI output support for common SD and HD formats
- 4:3/16:9 conversion modes supported
- Embedded SDI audio output
- Reference input
- 3.5mm analog audio input embedded into SDI output
- Easy user control via USB
- Loop through HDMI connector
- Configure via USB port and supplied Mini-Config software

[View Online](#)



ROI-DP \$995

Display Port to 3G-SDI Scan Converter with Region of Interest

- Convert computer signals to professional video, with Region of Interest scaling
- User adjustable Region of Interest with interactive on-screen controls via supplied software
- Frame rate conversion
- Automatic input detection and configuration
- 3G/HD/SD-SDI output support for common SD and HD formats
- 4:3/16:9 conversion modes supported
- Embedded SDI audio output
- Reference input
- 3.5mm analog audio input embedded into SDI output
- Easy user control via USB
- Loop through DisplayPort connector
- Configure via USB port and supplied Mini-Config software

[View Online](#)



ROI-SDI \$995

3G-SDI to HDMI/3G-SDI Scan Converter with Region of Interest

- Convert 3G-SDI to 3G-SDI and HDMI conversion, with Region of Interest scaling
- User adjustable Region of Interest
- Frame rate conversion
- Automatic input detection and configuration
- Scan converter with dual independent scalers
- Rotation, Horizontal and Vertical flip controls
- 4:3/16:9 conversion modes supported
- Reference input
- 2-channel RCA analog audio output
- Easy user control via USB
- 3G-SDI loop through with Audio embedding connector
- Configure via USB port and supplied Mini-Config software

[View Online](#)

OPTICAL FIBER | Mini-Converters

Single, Dual, and Quad Channel SDI/Fiber Converters

FiDO is a family of SDI/Optical Fiber extenders. FiDO allows the transport of 12G/3G/HD/SD-SDI over distances up to 10km when using standard Single Mode fiber optic cable with Single Mode models.

Choose LC, ST, or SC connectors, depending on the converter model. CWDM SFP options are available for FiDO-2T-X and FiDO-4T-X models. Configure as appropriate with the SFP configurator.

FiDO converters meet all relevant SMPTE specifications and are rugged, versatile, and suitable for a variety of applications.

5 LEGENDARY
YEAR
WARRANTY



Models:

- **FiDO-TR-12G:** 12G-SDI/LC Fiber transceiver
- **FiDO-T-12G:** Single channel 12G-SDI to LC Fiber converter, with looping SDI output
- **FiDO-R-12G:** Single channel LC Fiber to 12G-SDI converter, with dual SDI outputs
- **FiDO-2T-12G:** Dual channel 12G-SDI to LC Fiber converter
- **FiDO-2R-12G:** Dual channel LC Fiber to 12G-SDI converter
- **FiDO-TR:** SDI/LC Fiber transceiver
- **FiDO-TR-MM:** Multi-Mode SDI/LC Fiber transceiver
- **FiDO-T:** Single channel SDI to LC Fiber converter, with looping SDI output
- **FiDO-T-MM:** Multi-Mode single channel SDI to LC Fiber converter, with looping SDI output
- **FiDO-R:** Single channel LC Fiber to SDI converter, with dual SDI outputs
- **FiDO-R-MM:** Multi-Mode single channel LC Fiber to SDI converter, with dual SDI outputs
- **FiDO-2T:** Dual channel SDI to LC Fiber converter
- **FiDO-2T-MM:** Multi-Mode dual channel SDI to LC Fiber converter
- **FiDO-2R:** Dual channel LC Fiber to SDI converter
- **FiDO-2R-MM:** Multi-Mode dual channel LC Fiber to SDI converter
- **FiDO-4T:** Quad channel SDI to LC Fiber converter
- **FiDO-4T-MM:** Multi-Mode quad channel SDI to LC Fiber converter
- **FiDO-4R:** Quad channel LC Fiber to SDI converter
- **FiDO-4R-MM:** Quad channel LC Fiber to SDI converter
- **FiDO-T-SC:** Single channel SDI to SC Fiber converter, with looping SDI output
- **FiDO-R-SC:** Single channel SC Fiber to SDI converter, with dual SDI outputs
- **FiDO-T-ST:** Single channel SDI to ST Fiber converter, with looping SDI output
- **FiDO-R-ST:** Single channel ST Fiber to SDI converter, with dual SDI outputs
- **FiDO-4T-ST:** Quad channel SDI to ST Fiber converter
- **FiDO-4R-ST:** Quad channel ST Fiber to SDI converter

OPTICAL FIBER | Mini-Converters

FiDO SFP Options From \$445*

Single Cases for CWDM transmitter SFPs are listed below.

When ordering AJA FiDOs for CWDM needs, please order the case as follows, all other FiDOs include Single Mode or Multi-Mode SFPs in price.

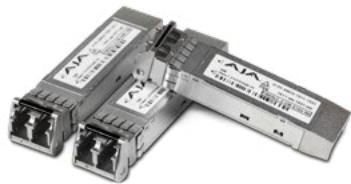
Model case name for ordering:

- **FiDO-2T-X:** \$1240 (Includes CWDM SFP module) Dual channel SDI to CDWM SFP*
- **FiDO-4T-X:** \$2685 (Includes CWDM SFP module) Quad channel SDI to CDWM SFP*

Configure at time of order with CWDM SFPs using AJA's SFP Configurator at www.aja.com/config

Multi-Mode SFP Modules

Single and Dual Channel LC Fiber;
Transmitters, Receivers and Transceivers



Model	Price	Description
FIBERLC-TR-MM	\$345	Single Multi-Mode LC 3G Fiber Transceiver SFP
FIBERLC-1TX-MM	\$295	Single Multi-Mode LC 3G Fiber Tx SFP
FIBERLC-1RX-MM	\$295	Single Multi-Mode LC 3G Fiber Rx SFP
FIBERLC-2TX-MM	\$345	Dual Multi-Mode LC 3G Fiber Tx SFP
FIBERLC-2RX-MM	\$345	Dual Multi-Mode LC 3G Fiber Rx SFP

CWDM SFP Modules \$695

Dual Channel LC Fiber Transmitters

Configure at time of purchase with one of the available CWDM SFP modules. See the Wavelength chart for more info.



Wavelength 1	Wavelength 2
1271 nm	1291 nm
1311 nm	1331 nm
1351 nm	1371 nm
1391 nm	1411 nm
1431 nm	1451 nm
1471 nm	1491 nm
1511 nm	1531 nm
1551 nm	1571 nm
1591 nm	1611 nm

OPTICAL FIBER | Mini-Converters

FiDO is a family of SDI/Optical Fiber extenders. FiDO allows the transport of 12G/3G/HD/SD-SDI over distances up to 10km when using standard Single Mode fiber optic cable with Single Mode models. Multi-Mode models available. Choose LC, ST, or SC connectors, depending on the converter model.

AJA Mini-Matrix: Converter Search Software
www.aja.com/software/mini-matrix



4K | HDR

[View Online](#)

FiDO-T-12G \$785

1-Channel 12G-SDI/LC Single Mode LC Fiber Transmitter

- Simplex connection (LC connector)
- 12G/3G/HD/SD-SDI input
- Support for HDR – High Dynamic Range video
- Reclocked loop through of SDI input
- Uses 5-20VDC power (DWP-U-R1 universal power supply included)



4K | HDR

[View Online](#)

FiDO-R-12G \$785

1-Channel Single Mode LC Fiber to 12G-SDI Receiver

- Simplex connection (LC connector)
- 12G/3G/HD/SD-SDI OUTPUT
- Support for HDR – High Dynamic Range video
- Second SDI output (DA: same signal)
- Dual, matching SDI outputs
- Uses 5-20VDC power (DWP-U-R1 universal power supply included)



4K | HDR

[View Online](#)

FiDO-2T-12G \$1325

2-Channel 12G-SDI to Single Mode LC Fiber Transmitter

- 2 simplex or 1 duplex connection (LC connector)
- 2 independent channels of 12G/3G/HD/SD-SDI inputs
- Support for HDR – High Dynamic Range video
- Both SDI-to-Fiber paths are completely independent
- Uses 5-20VDC power (DWP-U-R1 universal power supply included)



4K | HDR

[View Online](#)

FiDO-2R-12G \$1325

2-Channel Single Mode LC Fiber to 12G-SDI Receiver

- 2 simplex or 1 duplex connection (LC connector)
- 2 independent channels of 12G/3G/HD/SD-SDI OUTPUTS
- Support for HDR – High Dynamic Range video
- Both Fiber-to-SDI paths are completely independent
- Uses 5-20VDC power (DWP-U-R1 universal power supply included)



4K | HDR

[View Online](#)

FiDO-TR-12G \$1325

1-Channel 12G-SDI/LC Single Mode LC Fiber Transceiver

- Duplex connection (LC connector)
- 12G/3G/HD/SD-SDI INPUT and OUTPUT
- Support for HDR – High Dynamic Range video
- Bidirectional, dual channel fiber
- Uses 5-20VDC power (DWP-U-R1 universal power supply included)

OPTICAL FIBER | Mini-Converters



FiDO-TR \$645

1-Channel 3G-SDI/LC Single Mode LC Fiber Transceiver

- 1-channel 3G-SDI/LC Single Mode LC Fiber Transceiver
- Duplex connection (LC connector)
- 3G/HD/SD-SDI input and output
- Bidirectional, dual channel fiber
- Uses 5-20VDC power (DWP-U-R1 universal power supply included)

[View Online](#)



FiDO-TR-MM \$890

1-Channel 3G-SDI/LC Multi-Mode LC Fiber Transceiver

- Duplex connection (LC connector)
- 3G/HD/SD-SDI input and output
- Bidirectional, dual channel fiber
- Uses 5-20VDC power (DWP-U-R1 universal power supply included)

[View Online](#)



FiDO-T \$445

1-Channel 3G-SDI to Single Mode LC Fiber Transmitter

- Simplex connection (LC connector)
- 3G/HD/SD-SDI input
- Looping SDI output
- Uses 5-20VDC power (DWP-U-R1 universal power supply included)

[View Online](#)



FiDO-T-MM \$690

1-Channel 3G-SDI to Multi-Mode LC Fiber Transmitter

- Simplex connection (LC connector)
- 3G/HD/SD-SDI input
- Looping SDI output
- Uses 5-20VDC power (DWP-U-R1 universal power supply included)

[View Online](#)



FiDO-R \$445

1-Channel Single Mode LC Fiber to 3G-SDI Receiver

- Simplex connection (LC connector)
- 3G/HD/SD-SDI output
- Dual, matching SDI outputs
- Uses 5-20VDC power (DWP-U-R1 universal power supply included)

[View Online](#)



FiDO-R-MM \$690

1-Channel Multi-Mode LC Fiber to 3G-SDI Receiver

- Simplex connection (LC connector)
- 3G/HD/SD-SDI output
- Dual, matching SDI outputs
- Uses 5-20VDC power (DWP-U-R1 universal power supply included)

[View Online](#)

OPTICAL FIBER | Mini-Converters



FiDO-2T \$645

2-Channel 3G-SDI to Single Mode LC Fiber Transmitter

- Duplex connection (LC connector)
- Dual, independent 3G/HD/SD-SDI inputs
- Both SDI-to-Fiber paths are completely independent
- Uses 5-20VDC power (DWP-U-R1 universal power supply included)

[View Online](#)



FiDO-2T-MM \$890

2-Channel 3G-SDI to Multi-Mode LC Fiber Transmitter

- Duplex connection (LC connector)
- Dual, independent 3G/HD/SD-SDI inputs
- Both SDI-to-Fiber paths are completely independent
- Uses 5-20VDC power (DWP-U-R1 universal power supply included)

[View Online](#)



FiDO-2R \$645

2-Channel Single Mode LC Fiber to 3G-SDI Receiver

- Duplex connection (LC connector)
- Dual, independent 3G/HD/SD-SDI outputs
- Both Fiber-to-SDI paths are completely independent
- Uses 5-20VDC power (DWP-U-R1 universal power supply included)

[View Online](#)



FiDO-2R-MM \$890

2-Channel Multi-Mode LC Fiber to 3G-SDI Receiver

- Duplex connection (LC connector)
- Dual, independent 3G/HD/SD-SDI outputs
- Both Fiber-to-SDI paths are completely independent
- Uses 5-20VDC power (DWP-U-R1 universal power supply included)

[View Online](#)



FiDO-2T-X \$1,240

2-Channel 3G-SDI to Single Mode LC Fiber Transmitter for CWDM SFPs

- Duplex connection (LC connector)
- Dual, independent 3G/HD/SD-SDI inputs
- Both SDI-to-Fiber paths are completely independent
- Uses 5-20VDC power (DWP-U-R1 universal power supply included)

[View Online](#)

(Includes one CWDM SFP module)

OPTICAL FIBER | Mini-Converters



FiDO-4T \$1495

4-Channel 3G-SDI to Single Mode LC Fiber Transmitter

- 4 simplex or 2 duplex output connections (LC connector)
- 4 independent channels of 3G/HD/SD-SDI
- 4K/UltraHD-SDI over 4 fiber links
- Uses 5-20VDC power (DWP-U-R1 universal power supply included)

[View Online](#)



FiDO-4T-MM \$1985

4-Channel 3G-SDI to Multi-Mode LC Fiber Transmitter

- 4 simplex or 2 duplex output connections (LC connector)
- 4 independent channels of 3G/HD/SD-SDI
- 4K/UltraHD-SDI over 4 fiber links
- Uses 5-20VDC power (DWP-U-R1 universal power supply included)

[View Online](#)



FiDO-4R \$1495

4-Channel Single Mode LC Fiber to 3G-SDI Receiver

- 4 simplex or 2 duplex input connections (LC connector)
- 4 independent channels of 3G/HD/SD-SDI
- 4K/UltraHD-SDI over 4 fiber links
- Uses 5-20VDC power (DWP-U-R1 universal power supply included)

[View Online](#)



FiDO-4R-MM \$1985

4-Channel Multi-Mode LC Fiber to 3G-SDI Receiver

- 4 simplex or 2 duplex input connections (LC connector)
- 4 independent channels of 3G/HD/SD-SDI
- 4K/UltraHD-SDI over 4 fiber links
- Uses 5-20VDC power (DWP-U-R1 universal power supply included)

[View Online](#)



FiDO-4T-X \$2685

4-Channel 3G-SDI to Single Mode LC Fiber Transmitter for CWDM SFPs

- 4 simplex or 2 duplex output connections (LC connector)
- 4 independent channels of 3G/HD/SD-SDI input
- 4K/UltraHD-SDI over 4 fiber links
- Uses 5-20VDC power (DWP-U-R1 universal power supply included)

(Includes both CWDM SFP Modules)

[View Online](#)

OPTICAL FIBER | Mini-Converters



FiDO-T-SC \$445

1-Channel 3G-SDI to Single Mode SC Fiber Transmitter, with SDI Loop Out

- Simplex connection (SC connector)
- 3G/HD/SD-SDI input
- Looping SDI output
- Uses 5-20VDC power (DWP-U-R1 universal power supply included)

[View Online](#)



FiDO-R-SC \$445

1-Channel Single Mode SC Fiber to 3G-SDI Receiver, with Dual SDI Output

- Simplex connection (SC connector)
- 3G/HD/SD-SDI output
- Dual, matching SDI outputs
- Uses 5-20VDC power (DWP-U-R1 universal power supply included)

[View Online](#)



FiDO-T-ST \$445

1-Channel 3G-SDI to Single Mode ST Fiber Transmitter, with SDI Loop Out

- Simplex connection (ST connector)
- 3G/HD/SD-SDI input
- Looping SDI output
- Uses 5-20VDC power (DWP-U-R1 universal power supply included)

[View Online](#)



FiDO-R-ST \$445

1-Channel Single Mode ST Fiber to 3G-SDI Receiver, with Dual SDI Outputs

- 4 simplex input connection (ST connector)
- 4 independent channels of 3G/HD/SD-SDI
- 4K/UltraHD-SDI over 4 fiber links
- Uses 5-20VDC power (DWP-U-R1 universal power supply included)

[View Online](#)



FiDO-4T-ST \$1,495

4-Channel 3G-SDI to Single Mode ST Fiber Transmitter

- 4 simplex output connection (ST connector)
- 4 independent channels of 3G/HD/SD-SDI
- 4K/UltraHD-SDI over 4 fiber links
- Uses 5-20VDC power (DWP-U-R1 universal power supply included)

[View Online](#)



FiDO-4R-ST \$1,495

4-Channel Single Mode ST Fiber to 3G-SDI Receiver

- 4 simplex input connection (ST connector)
- 4 independent channels of 3G/HD/SD-SDI
- 4K/UltraHD-SDI over 4 fiber links
- Uses 5-20VDC power (DWP-U-R1 universal power supply included)

[View Online](#)

Mini-Converter | Accessories



[View Online](#)

DRM \$590

Mini-Converter Rackmount Frame

The DRM is a 2RU high frame that can accommodate up to 12 of the smaller AJA Mini-Converters (D4 – D5 series and others of the same size), up to six of the larger AJA Mini-Converters (D10 or HD10 series), or a mixture of both. The DRM has a built-in 110/220V power supply with 12 connectors to provide 5V power directly to the Mini-Converters without the need for individual power supplies for each Mini-Converter.

The Following AJA Mini-Converter Types Can Be Installed in the DRM:

- D-Series
- HD-Series
- C-Series

The DRM includes a built-in power supply with connections for up to 12 converters to eliminate the need for individual power supplies. An optional front panel is also available.

NOTE: Due to heat, size and power requirements, AJA's Mini-Converters that use 10 watts or more are not supported in the DRM frame.

DWP-U-R1 \$40

Universal Power Supply

The DWP-U-R1 is an internationally compatible universal power supply included free of charge with all AJA Mini-Converters. With four interchangeable plug adapters, the DWP-U-R1 can be used virtually anywhere in the world. A molded, latching, circular connector with gold pins ensures the DWP meets the high reliability requirements of the professional video industry.



[View Online](#)

PWR-CABLE \$65

P-TAP to 2x AJA Mini-Converter Power Connectors

PWR-Cable provides two AJA Mini-Converter power connectors for use with batteries for convenient power supply solutions to AJA Mini-Converters, Ideal for use in the field or on set.



Mini-Converter | Accessories



P-TAP-CBL \$45

P-Tap to AJA Mini-Converter Power Cable

P-TAP-CBL provides an elegant cable connection for powering AJA Mini-Converters from a standard P-tap (or D-tap) on your battery or battery plate, simplifying power supply needs in the field or on a shoot.



CMP \$99

Converter Mounting Plate

Converter Mounting Plate: Mount most AJA Mini-Converters on industry standard wireless transmitter brackets, etc. Flexible mounting options allow direct attachment of converters to cameras, rigs, and battery plates. One bracket with two mounting screws included.

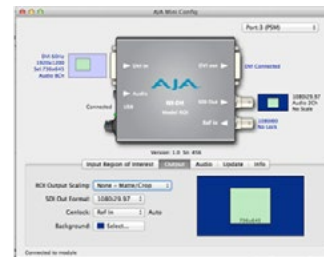
[View Online](#)



RMB \$7

Rackmount Bracket

Easily mount AJA Mini-Converters to the side of a rack. One bracket with two mounting screws included. Also available in a 10 pack; RMB-1



AJA Mini-Config FREE

Visual Configuration and Control Software
AJA's free Mini-Config software can be used with any USB-enabled AJA Mini-Converter and provides an easy-to-use graphical interface with detailed information about the current input and output formats. Control all the parameters of any supported AJA Mini-Converter as well as loading firmware updates from AJA that add new features and functionality.

openGEAR | Cards and Rackframe

5 LEGENDARY
YEAR
WARRANTY

 For critical broadcast applications, AJA openGear compatible converter cards, with DashBoard support, provide the highest levels of quality and reliability for use in OG frames including the new OG-X-FR.

AJA Mini-Matrix: Converter Search Software
www.aja.com/software/mini-matrix



4K | HDR

[View Online](#)

OG-Hi5-4K-Plus \$595

openGear 4K/UltraHD (4x 3G-SDI) to full HDMI 2.0 Converter

- 4x 3G-SDI inputs
- Support for 4:2:2/4:4:4 HDMI 2.0 output
- Controlled by DashBoard network control software
- HD conversion supported
- HDR support for HDR10 and HLG
- Embedded audio support
- Compatible with DFR-8321, OG3 and OGX openGear frames



4K | HDR

[View Online](#)

OG-HA5-4K \$595

openGear 4K/UltraHD HDMI to 4K/UltraHD (4x 3G-SDI) Converter

- Supports HDMI 2.0 up to 60p at 4:4:4, 4:2:2, and 4:2:0
- Supports quadrant (square division) and 2SI (two sample interleave) 4K/UltraHD SDI mapping
- 4x 3G-SDI outputs
- Controlled by DashBoard network control software
- HD resolutions supported
- HDR Infoframe analysis with AJA DashBoard
- Embedded audio support
- Compatible with DFR-8321, OG3 and OGX openGear frames



4K

[View Online](#)

OG-4K2HD \$795

openGear 4K/UltraHD to 3G-SDI and HDMI Down-Converter

- 4K (4096x2160) and UltraHD (3840x2160) support
- Down-conversion for supporting 4K on HD-SDI and HDMI devices
- Simultaneous HD-SDI and HDMI output
- Controlled by DashBoard network control software
- Aspect ratio conversion from full 4K to HD
- Supports up to 4K/UltraHD 50/60fps high-framerate input formats
- Compatible with DFR-8321, OG3 and OGX openGear frames



[View Online](#)

OG-UDC \$695

openGear HD/SD Up, Down, Cross-Converter

- Converts between 3G, HD and SD formats
- Supports 1080p 50/60
- Controlled by DashBoard network control software and external DIP switch
- 2x 3-Pin Terminal Block connectors (included)
- 16-channel embedded SDI audio input and output
- Reference Input
- Compatible with DFR-8321, OG3 and OGX openGear frames

openGEAR | Cards and Rackframe

5 LEGENDARY
YEAR
WARRANTY



OG-3G-AMD \$795

openGear 3G-SDI 8-Channel 24-bit AES Embedder/Disembedder

- Video Formats: 3G-SDI
- 3G-SDI Embedder / Disembedder in one board
- Input: 1x 3G-SDI BNC
- Outputs: 1x 3G-SDI BNC
- 4x AES BNC (2 channels per input)
- Local and Remote modes
- Incoming embedded audio passed, removed, or overridden
- Configure via openGear DashBoard, or DIP switch
- Power: 5.0 watts
- Hot swappable
- Compatible with DFR-8321, OG3 and OGX openGear frames

[View Online](#)

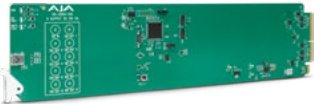


OG-3G-AMA \$795

openGear 3G-SDI Analog Audio Embed/Disembed

- 3G-SDI Embedder/Disembedder
- 8-channel Balanced Analog Audio I/O
- Controlled by DashBoard network control software and external DIP switch
- 8x 3-Pin Terminal Block connectors (included)
- Compatible with DFR-8321, OG3 and OGX openGear frames

[View Online](#)



OG-3GDA-1x9 \$495

openGear 1x9 3G-SDI Reclocking DA

- Video Formats: 150 Mbps - 3 Gbps, format agnostic
- Input: 1x 3G-SDI BNC
- Outputs: 9x 3G-SDI BNC
- Support for HDR – High Dynamic Range video
- Monitor via openGear DashBoard
- Passes embedded audio, all ancillary data including closed caption and time code
- Input Present and Input SMPTE Lock LEDs
- Automatic input equalization and output reclocking
- 270 Mbps, 1.483 Gbps, 1.485 Gbps, 2.966 Gbps, 2.970 Gbps - Auto Select
- Power: 2.5 watts max per card
- Hot swappable
- Compatible with DFR-8321, OG3 and OGX openGear frames

[View Online](#)



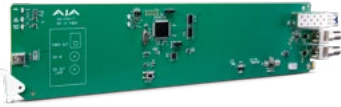
OG-3GDA-2x4 \$550

openGear 2x4 3G-SDI Reclocking DA

- Video Formats: 150 Mbps - 3 Gbps, format agnostic
- Input: 1x 3G-SDI BNC (1x8 mode); 2x 3G-SDI BNC (2x4 mode)
- Outputs: 8x 3G-SDI BNC
 - 4 outputs noninverting (1x8 mode)
 - 2 outputs noninverting (2x4 mode)
- Support for HDR – High Dynamic Range video
- Monitor via openGear DashBoard
- Passes embedded audio, all ancillary data including closed caption and time code
- Input Present and Input SMPTE Lock LEDs
- Automatic input equalization and output reclocking
- 270 Mbps, 1.483 Gbps, 1.485 Gbps, 2.966 Gbps, 2.970 Gbps - Auto Select
- Power: 2.6 watts max per card
- Hot swappable
- Compatible with DFR-8321, OG3 and OGX openGear frames

[View Online](#)

openGEAR | Cards and Rackframe



OG-FiDO-T \$445

openGear 1-Channel 3G-SDI to Single Mode LC Fiber Transmitter

- Video Formats: 150 Mbps - 3 Gbps, format agnostic
- Inputs: 1x 3G-SDI with SDI Loop out
- Outputs: 1x 3G-SDI BNC; 1x Single Mode LC Fiber
- Monitor via openGear DashBoard
- Input Present and Input SMPTE Lock LEDs
- Automatic detection and reclocking
- 270 Mbps, 1.483 Gbps, 1.485 Gbps, 2.966 Gbps, 2.970 Gbps - Auto Select
- Nominal Wavelength: 1310 nm
- Power: 2.5 watts
- Hot swap capable
- Compatible with DFR-8321, OG3 and OGX openGear frames

[View Online](#)



OG-FiDO-R \$445

openGear 1-Channel Single Mode LC Fiber Receiver

- Video Formats: 150 Mbps - 3 Gbps, format agnostic
- Input: 1x Single Mode LC Fiber
- Outputs: 2x 3G-SDI BNC (Mirrored)
- Monitor via openGear DashBoard
- Input Present and Input SMPTE Lock LEDs
- Automatic detection and reclocking
- 270 Mbps, 1.483 Gbps, 1.485 Gbps, 2.966 Gbps, 2.970 Gbps - Auto Select
- Nominal Wavelength: 1260-1620 nm
- Power: 2.5 watts
- Hot swap capable
- Compatible with DFR-8321, OG3 and OGX openGear frames

[View Online](#)



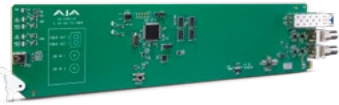
OG-FiDO-TR \$645

openGear 1-Channel 3G-SDI/LC Single Mode LC Fiber Transceiver

- Video Formats: 150 Mbps - 3 Gbps, format agnostic
- Inputs: 1x 3G-SDI BNC; 1x Single Mode LC Fiber
- Outputs: 1x 3G-SDI BNC; 1x Single Mode LC Fiber
- Monitor via openGear DashBoard
- Input Present and Input SMPTE Lock LEDs
- Automatic detection and reclocking
- 270 Mbps, 1.483 Gbps, 1.485 Gbps, 2.966 Gbps, 2.970 Gbps - Auto Select
- Nominal Wavelength: 1260-1620 nm
- Power: 2.5 watts
- Hot swap capable
- Compatible with DFR-8321, OG3 and OGX openGear frames

[View Online](#)

openGEAR | Cards and Rackframe



OG-FiDO-2T \$645

openGear 2-Channel 3G-SDI to Single Mode LC Fiber Transmitter

- Video Formats: 150 Mbps - 3 Gbps, format agnostic
- Inputs: 2x Independent 3G-SDI Inputs, BNC connectors
- Outputs: 2x Independent Single Mode optical fiber, LC connectors
- Monitor via openGear DashBoard
- Input Present and Input SMPTE Lock LEDs
- Automatic detection and reclocking
- 270 Mbps, 1.483 Gbps, 1.485 Gbps, 2.966 Gbps, 2.970 Gbps - Auto Select
- All other rates are passed through and not reclocked
- Wavelength: 1260-1620 nm
- Optical Power: -5dBm (min), 0dBm (max)
- Power: 2.5 watts
- Hot-swap capable
- Compatible with DFR-8321, OG3 and OGX openGear frames

[View Online](#)



OG-FiDO-2R \$645

openGear 2-Channel 3G-SDI to Single Mode LC Fiber Receiver

- Video Formats: 150 Mbps - 3 Gbps, format agnostic
- Inputs: 2x Single Mode LC Fiber
- Outputs: 2x 3G-SDI BNC
- Monitor via openGear DashBoard
- Input Present and Input SMPTE Lock LEDs
- Automatic detection and reclocking
- 270 Mbps, 1.483 Gbps, 1.485 Gbps, 2.966 Gbps, 2.970 Gbps - Auto Select
- Nominal Wavelength: 1260-1620 nm
- Power: 2.5 watts
- Hot swap capable
- Compatible with DFR-8321, OG3 and OGX openGear frames

[View Online](#)



OG-FiDO-2T-X \$1,240

openGear 2-Channel 3G-SDI to Single Mode LC Fiber Transmitter for CWDM

- Video Formats: 150 Mbps - 3 Gbps, format agnostic
- Inputs: 2x 3G-SDI BNC
- Outputs: 2x CWDM LC Fiber
- Monitor via openGear DashBoard
- Input Present and Input SMPTE Lock LEDs
- Automatic detection and reclocking
- 270 Mbps, 1.483 Gbps, 1.485 Gbps, 2.966 Gbps, 2.970 Gbps - Auto Select
- Nominal Wavelength: Choice of 9 wavelength pairs
- Power: 2.5 watts
- Hot swap capable
- Compatible with DFR-8321, OG3 and OGX openGear frames

(Includes CWDM SFP module)

[View Online](#)



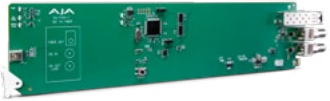
OG-FiDO-TR-MM \$890

openGear 1-Channel 3G-SDI/LC Multi-Mode LC Fiber Transceiver

- Video Formats: 150 Mbps - 3 Gbps, format agnostic
- Inputs: 1x3G-SDI BNC; 1x Multi-Mode LC Fiber
- Outputs: 1x 3G-SDI BNC; 1x Multi-Mode LC Fiber
- Monitor via openGear DashBoard
- Input Present and Input SMPTE Lock LEDs
- Automatic detection and reclocking
- 270 Mbps, 1.483 Gbps, 1.485 Gbps, 2.966 Gbps, 2.970 Gbps - Auto Select
- Nominal Wavelength: 850 nm
- Power: 2.5 watts
- Hot swap capable
- Compatible with DFR-8321, OG3 and OGX openGear frames

[View Online](#)

openGEAR | Cards and Rackframe

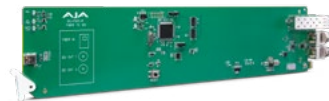


OG-FiDO-T-MM \$690

openGear 1-Channel 3G-SDI to Multi-Mode LC Fiber Transmitter

- Video Formats: 150 Mbps - 3 Gbps, format agnostic
- Inputs: 1x 3G-SDI with SDI Loop out
- Outputs: 1x 3G-SDI BNC Output; 1x Multi-Mode LC Fiber Output
- Monitor via openGear DashBoard
- Input Present and Input SMPTE Lock LEDs
- Automatic detection and reclocking
- 270 Mbps, 1.483 Gbps, 1.485 Gbps, 2.966 Gbps, 2.970 Gbps - Auto Select
- Nominal Wavelength: 850 nm
- Power: 2.5 watts
- Hot swap capable
- Compatible with DFR-8321, OG3 and OGX openGear frames

[View Online](#)

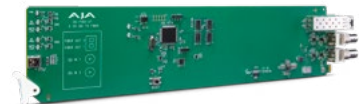


OG-FiDO-R-MM \$690

openGear 1-Channel Multi-Mode LC Fiber to 3G-SDI Receiver

- Video Formats: 150 Mbps - 3 Gbps, format agnostic
- Input: 1x Multi-Mode LC Fiber
- Outputs: 2x 3G-SDI BNC Outputs (Mirrored)
- Monitor via openGear DashBoard
- Input Present and Input SMPTE Lock LEDs
- Automatic detection and reclocking
- 270 Mbps, 1.483 Gbps, 1.485 Gbps, 2.966 Gbps, 2.970 Gbps - Auto Select
- Nominal Wavelength: 850 nm
- Power: 2.5 watts
- Hot swap capable
- Compatible with DFR-8321, OG3 and OGX openGear frames

[View Online](#)



OG-FiDO-2T-MM \$890

openGear 2-Channel 3G-SDI to Multi-Mode LC Fiber Transmitter

- Video Formats: 150 Mbps - 3 Gbps, format agnostic
- Inputs: 2x 3G-SDI BNC
- Outputs: 2x Multi-Mode LC Fiber
- Monitor via openGear DashBoard
- Input Present and Input SMPTE Lock LEDs
- Automatic detection and reclocking
- 270 Mbps, 1.483 Gbps, 1.485 Gbps, 2.966 Gbps, 2.970 Gbps - Auto Select
- Nominal Wavelength: 850 nm
- Power: 2.5 watts
- Hot swap capable
- Compatible with DFR-8321, OG3 and OGX openGear frames

[View Online](#)



OG-FiDO-2R-MM \$890

openGear 2-Channel Multi-Mode LC Fiber to 3G-SDI Receiver

- Video Formats: 150 Mbps - 3 Gbps, format agnostic
- Inputs: 2x Multi-Mode LC Fiber
- Outputs: 2x 3G-SDI BNC
- Monitor via openGear DashBoard
- Input Present and Input SMPTE Lock LEDs
- Automatic detection and reclocking
- 270 Mbps, 1.483 Gbps, 1.485 Gbps, 2.966 Gbps, 2.970 Gbps - Auto Select
- Nominal Wavelength: 850 nm
- Power: 2.5 watts
- Hot swap capable
- Compatible with DFR-8321, OG3 and OGX openGear frames

[View Online](#)

Five Year Warranty

AJA Video warrants that Converter products will be free from defects in materials and workmanship for a period of five years from the date of purchase.

About AJA Video Systems, Inc.

Since 1993, AJA Video has been a leading manufacturer of video interface and conversion solutions, bringing high quality, cost effective digital video products to the professional, broadcast and postproduction markets. AJA products are designed and manufactured at our facilities in Grass Valley, California, and sold through an extensive sales channel of resellers and systems integrators around the world. For further information, please see our website at www.aja.com

AJA Video Systems, Inc.
Grass Valley, California

www.aja.com • sales@aja.com • support@aja.com

