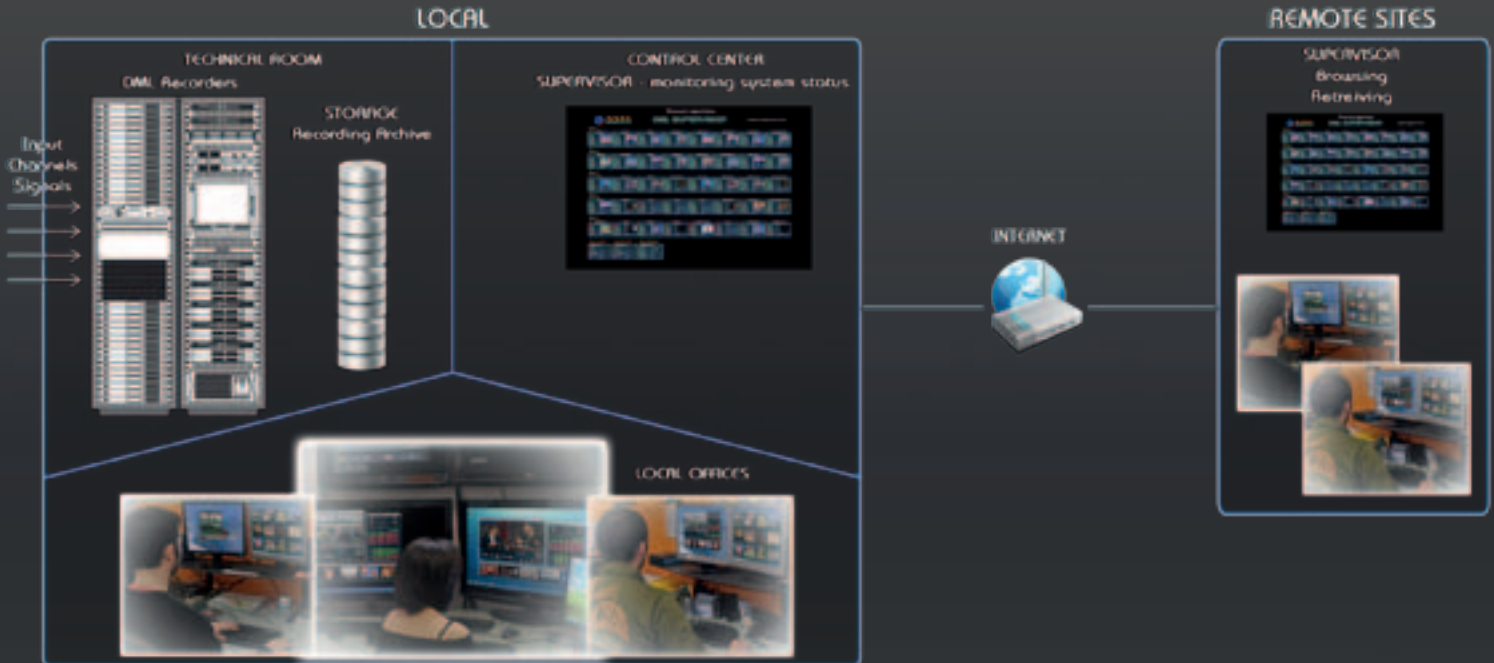


DML

DML is designed for:

- TV broadcasting law obligations
- Advertisement certification
- Monitoring of TV channels and programs
- Video & audio quality monitoring
- A/V streaming over Internet
- CCTV Internal / DVR
- DVB -T and DVT -S TS recording
- Ready for HD Recording

Functional Scheme



MAIN FEATURES

DML records A/V contents coming from the widest variety of sources (composite, Y/C, Antenna, SAT, etc) and stores them on Hard Disk (recordings stay on line depending on hard disks capacity, usually: 30/60/90 days as required by laws in many countries).

DML system is totally maintenance free and oldest recordings are overwritten by the newest ones automatically. Video compression/quality vary according to the archive space and the logging period chosen.

Recording quality may be as high as **"broadcast A/V"**.

Content is accessible from the DML as well from any networked computer, never stopping the recording.

With the **free DML Player software**, content can be easily edited and downloaded on external media such as VHS, CD, DVD and converted to the most popular video formats.

DML files are standard Windows multimedia files, which can also be played on any ordinary multimedia player.

System status is constantly monitored either locally, thanks to **DML-embedded tools**, as well as from any networked computer running the **DML Monitor** free software.

Whenever rising, alarms may be notified via email or SMS.

- **Zero operating costs:** the system is completely automated and totally maintenance free. Non stop 24/7 recording.
- **Reliable:** advanced auto-diagnostic tools guarantee continuous up time.
- **No cassettes**, time lapse recorders, rewinding times, waste of storage space, maintenance costs, etc.
- Automatic management of world **time zones** and **daylight saving**.
- Accurate date and time display **locked to GPS** satellites.
- **Date & time** stamped onto video or displayed "on the fly" by DML Player. On home DVD players date and time are displayed as **subtitles**.
- **Instant playback** available on any connected PC, for content browsing, editing and media conversion.



TURNKEY SYSTEM AVAILABLE

- Video formats **M-JPEG, MPEG-1, MPEG-2, MPEG-4, DIVX, DV, H.264, WMV** with audio **MP3, MP2, PCM**, with configurable compression factor.
- **Data security**: featuring RAID architecture, content is preserved in case of disk failure.
- **Remote system monitoring** from any LAN or Internet connected Pc.
- **Easy content export/conversion** with Mark-In and Out points. Flexible transcoding to most of video formats.
- Video playback on regular TV monitors with Video VGA PC --card.

DML RECORDER: Non Stop A/V Logging and IP Streaming

DML Recorder supports a large variety of video formats, compressions and resolutions, from the efficient and 'handy' DIVX and MPEG-4 to the more traditional MPEG-1, MPEG-2 and M-JPEG.

Simultaneous capture and Windows Media © **streaming** allows viewing of encoded A/V signal from anywhere through Internet.

DML architecture is **future-proof** and conceived for the easiest integration of any new video format.

Date and time display are **superimposed** onto video signal or **embedded** into the A/V data stream.

Date and time info are also displayed on PC screen or as **subtitle** on home DVD players.

Accurate date and time certification is guaranteed through synchronization to GPS satellites time reference with **Axel Technology's Sat Time Synchronizer** receiver.

DML Recorder status is constantly monitored by auto-diagnostic tools. In case of alarms, the operator is warned via **email** or **SMS**.

Monitored parameters: Disk activity / video presence / audio presence / instant data-rate / average data-rate / A/V stream integrity.

DML PLAYER: Content Searching, Browsing and Conversion

DML Player is a free software application for real time content browsing from any networked Pc.

Exclusive **simultaneous multi-channel playback** allows accurate AV temporal comparison.

The **calendar** window shows available recordings. Just 'click' on desired date and time to start payout.

Play speed is variable from 0.5x to 16x. Video can be reproduced also on a regular TV monitor with Video-VGA PC card.

Print-out of single video frames is also supported.

Go To date / time function allows **direct playback** to specific recorded events. Capability to jump to specific date and time using generic Log files.

Mark-in & Mark-out tools along with additional basic editing tools allow extraction of A/V sequences.

Fast **export or conversion** in native or popular formats to fit all distribution and storage needs: Video CD, DVD, E-mail, etc. Mark point positioning is frame-accurate using handy scroll & drag bars, along with keyboard shortcuts.

DML MONITOR: Remote Monitoring Via Lan

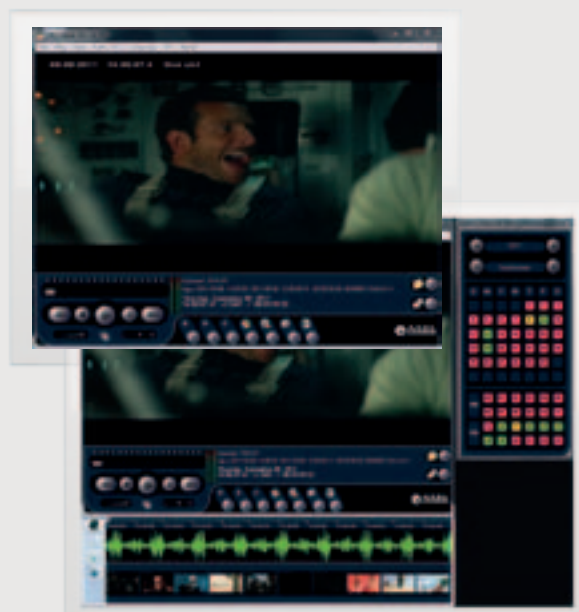
DML Monitor is a free software tool which allows monitoring in real time through LAN and Internet of one or more DML units.

System and **recording supervision** will be available from anywhere.

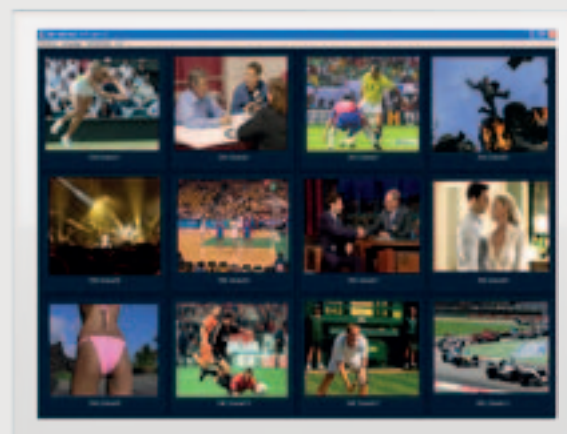
DML Monitor displays current video frame for each recorder, together with **status** info, systems logs, streaming video and the upcoming of **alarms** or parameters out of range.



DML RECORDER



DML PLAYER



DML MONITOR

DML OPTIONS

MULTICHANNEL RECORDING:

of up to 4 A/V signals on a single equipment.

SUPERVISOR:

monitors multiple unit status and connected devices, managing hierarchical alarm levels and notification via email, SMS, fax, etc. Suggested for multichannel environments.

Featuring automatic system recover and emergency intervention (such as spare units activation, A/V routing, remote control of A/V matrix, asynchronous serial communication and GPI, etc.)

XMAM:

fast and simple integration with Axel Technology's Media Asset Management System.

Simple export of media content for organization, searching and browsing. XMAM is a Web-based, user focused interface that supports yaccess and processing of digital assets like video, audio, images, documents and presentations.

It supports standard web browser navigation without additional client software needed.

SAT TIME SYNCHRONIZER:

allows an extremely accurate synchronization of Pc clock to GPS satellite reference.

Recommended for tamper-proof date / time certification.



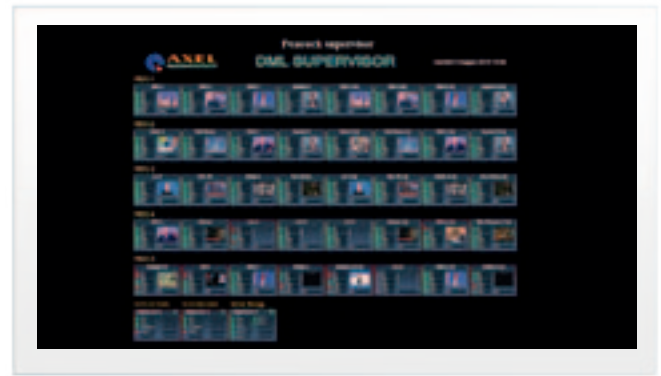
GPS RECEIVER

EZ-DML Software kit edition

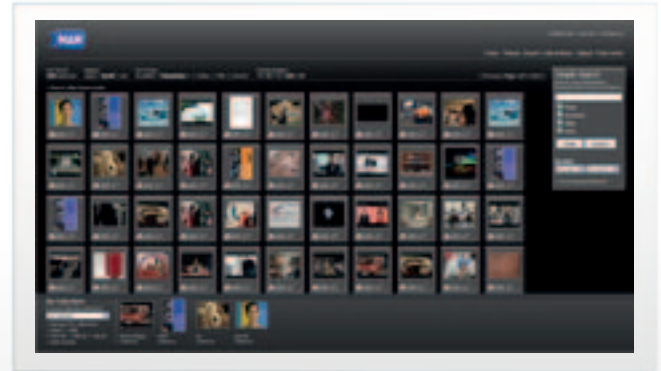
DML is also available as a software 'kit' to be installed on the customer's hardware. The package includes DML Recorder / Player / Monitor applications. Capture devices (PCI/PCIe Cards or USB/DV converters) are available on request.

EZ-DML TECHNICAL SPECS:

Video format	DivX
Audio format	MP3
Output file format	Microsoft Windows AVI



MULTIPLE CHANNEL SYSTEM SUPERVISOR



ARCHIVING & CATALOGUE

DML TECHNICAL SPECIFICATIONS

MINIMUM SYSTEM REQUIREMENTS

Operating System	Microsoft Windows™ XP SP3 / Seven
A/V capture device	PCI, PCIe, USB2, DV (1394 Firewire), DirectShow compatible
CPU	Intel Pentium4 3GHz Core2 Duo – QuadCore suggested
RAM	1 GB – 2Gb suggested for multichannel recordings
VGA	1024x768, 24bits
Audio Board	Windows compatible audio cards
Suggested HD / security	SATA / RAID 5

DATARATE & STORAGE:

VIDEO BIT RATE	AUDIO BIT RATE	1 DAY REC	90 DAY REC
300 kbps	64 kbps	3.8 GB	338 GB
800 kbps	96 kbps	10 GB	900 GB
1 Mbps	128 kbps	12.5 GB	1.2 TB

DML AVAILABLE VERSIONS

Single
MultiChannel

Pictures and technical specs in this leaflet are provided for information purpose only and are subject to change without further notification (Ver. 2.0)