

datavideo®

PRODUCT
GUIDE
2014



CONTENTS

Mobile Video Studio 4	Converter/ Distribution Amplifier 10	HD/SD-SDI PTZ Camera 16	Virtual Studio System 22
MS-3000PPU	DAC-70	PTC-150	TVS-1000
OBV-2800	DAC-60	PTC-120	Test & Measurement 24
MRS-2800	DAC-50	RMC-180P	VS-100
MS-2800	DAC-9P	RMC-190	VS-150
Portable Video Studio 5	DAC-8P	Camera Controller 17	VSM-100
HS-2800	DAC-7/ 7L	MCU-100P	VSM-200
HS-2200	VP-597/ VP-445	MCU-100S	Audio Delay/ Audio Mixer/
HS-600	RMK-2	MCU-200	Audio Converter 25
HS-500	MB-4/ 5/ 6	AD-1	AD-200
Digital Video Switcher 6	Digital Video Recorder 12	Video Streaming Server 18	AD-100
SE-3000	HRS-30HD	NVS-20	DAC-80
SE-2800	HDR-60	IP Video Decoder 18	BAC-03
SE-2200	HDR-70	NVD-20	AM-100
SE-1200	DN-600	Network Media Player 18	Power Center 26
SE-600	DN-700	NVP-20	PD-2A
SE-500	DN-60A	Wi-Fi Bridge Unit 19	PD-4A
Video Monitor 8	Teleprompter 13	NVW-150	PD-6
TLM-170P/ PM/ PR	TP-100	NVW-250	DDC-4012H
TLM-170G/ GM/ GR	TP-300	Intercom/Tally System 20	All In One Cable/ Repeater 27
TLM-702HD	TP-500	ITC-100	CB-22H/ 23H
TLM-702	TP-600	HP-1	CB-30/ 31/ 38
TLM-700HD	Character Generator 14	HP-2/ A	CB-46/ 47/ 48
TLM-700	TC-200+CG-200	Chromakey 21	VP-633
TLM-434H	CG-500	DVK-300HD	VP-634
TLM-430	CG-350	DVK-200	VP-605H
	CG-10HD	CKL-300	VP-737
	CG-100		



MS-3000PPU



OBV-2800



MRS-2800



MS-2800



HS-2800



HS-2200



HS-600



HS-500



HD/SD 16-Channel
1.5M/E Portable Production Unit
MS-3000PPU

The Datavideo MS-3000 instantly transforms any space into a complete live recording studio. As a powerful PPU (portable production unit), it is ideal for fast-turnaround production. MS-3000 can be used in a dedicated facility, ad hoc studio or in a van. With high strength wheels, it can quickly roll it into a vehicle for easy transport. In an easy-to-use configuration, MS-3000 houses a production switcher that supports up to 16 HD/SDI, 10 bit 4:2:2 video inputs, together with flip-out monitors, hard drive video recorders, intercom systems, video test and measurement devices and much more. All are enclosed in a movable flight case providing secure protection on the move. The MS-3000 is truly plug-and play, saving time and effort setting up the video production console for live concerts, live events, sports and conferences.

Model	MS-3000PPU	OBV-2800	MRS-2800	MS-2800
Description	1.5M/E Portable Product Unit 8/12/16-CH HD/SD-SDI inputs 23RU Dual Rack Flight Case	OBV Rack System 8/12-CH HD/SD-SDI inputs 25RU Mobile Rack System (x 2)	Mobile Rack System 8/12-CH HD/SD-SDI inputs 25RU Mobile Rack System	Mobile Video Studio 8/12-CH HD/SD-SDI inputs 8RU Flight Case
Configuration				
Digital Video Switcher	SE-3000-8/12/16 (1.5M/E)	SE-2800-8/12	SE-2800-8/12	SE-2800-8/12
17.3" Rack Mount LCD	TLM-170GM x 2	TLM-170GR x 2	TLM-170GR x 1	TLM-170GR x 1
HD/SD SDI Recorder	HDR-70 x 2	HDR-70 x 2	HDR-70 x 1	HDR-70 x 1
Intercom/Tally system	ITC-100 w/ 8x Belt pack	ITC-100 w/8 Belt pack	ITC-100 w/4 Belt pack	ITC-100 w/4 Belt pack
SDI Vector Scope	VSM-100	VSM-100	---	---
Audio Mixer (6-CH)	AM-100	AM-100	---	---
Audio Delay Box	AD-100 with RMK-1	AD-100 with RMK-1	AD-100 with RMK-1	AD-100 with RMK-1
Power distributor (8-way)	PD-2A	PD-2A	PD-2A	PD-2A
Return Video (8-CH CV)	RP-45A	RP-45A	---	---
Camera Power Distributor	PD-6	PD-6	---	---
HD/SD SDI Amplifier	VP-445 x 4 on 1RU Patch	VP-445 x 1	VP-445 x 1	---
Rack System Integration	23RU Dual Rack Flight Case	25RU Mobile Rack System x 2	25RU Mobile Rack System	8RU Flight Case
Options				
SDI Vector Scope	---	---	VSM-100	VSM-100
Return Video (8-CH CV)	---	---	RP-45A	RP-45A
Camera Power Distributor	---	---	PD-6	PD-6
Camera Power Regulator	DDC-4012H (9-30V to DC12V)	DDC-4012H (9-30V to DC12V)	DDC-4012H (9-30V to DC12V)	DDC-4012H (9-30V to DC12V)
Redundant Power (360W)	PD-4A	PD-4A	PD-4A	PD-4A
Multi-Camera Control	MCU-200P/S	MCU-200P/S	MCU-200P/S	MCU-200P/S
Return Video LCD (CV)	TLM-430H with Ball head	TLM-430H with Ball head	TLM-430H with Ball head	TLM-430H with Ball head
SDI/CV/ITC/DC cable	CB-22H/CB23H (30m/50m)	CB-22H/CB23H (30m/50m)	CB-22H/CB23H (30m/50m)	CB-22H/CB23H (30m/50m)
CB-22H/23H Repeater	VP-605H	VP-605H	VP-605H	VP-605H
SDI/CV/ITC/Cat-5 cable	CB-30/31/38 (30/50/40m*)	CB-30/31/38 (30/50/40m*)	CB-30/31/38 (30/50/40m*)	CB-30/31/38 (30/50/40m*)
SDI/ITC cable	CB-46/47/48 (30/50/100m)	CB-46/47/48 (30/50/100m)	CB-46/47/48 (30/50/100m)	CB-46/47/48 (30/50/100m)
ITC/Tally cable	CB-3/CB-4 (20m/50m)	CB-3/CB-4 (20m/50m)	CB-3/CB-4 (20m/50m)	CB-3/CB-4 (20m/50m)
100m SDI Repeater	VP-633/VP-634	VP-633/VP-634	VP-633/VP-634	VP-633/VP-634

* extendable to 80m



Portable Video Studio
STUDIO IN A BOX

HD 6-Channel
Portable Video Studio
HS-2200

Model	HS-2800	HS-2200	HS-600	HS-500
Built-in Monitor Display	17.3" HD TFT LED back-lit, 1600x900 pix			2x 7" TFT LCD, 480x234 pix ea.
Video Standard	HD & SD	HD	SD only	SD only
Video Format	1080i 50/59.94/60Hz 576i 50Hz, 480i 59.94Hz	1080i 50/59.94/60Hz 576i 50Hz, 480i 59.94Hz	NTSC, PAL	NTSC, PAL
Input Routable / Crosspoint	Fixed	All 6, repeatable 720p 50/59.94/60 Hz	All 8, repeatable	Fixed
Video Input	Standard: 8x SDI, 2x HDMI, 4x CV Max: 12x SDI, 3x HDMI, 6x CV	6x HD-SDI, 2x HDMI (on CH5 & 6)	6x CV 1x DVI-D 1x DVI-I (VGA, need cable adapter)	4x CV or 4x S-Video
Computer Graphic Interface	Max 3 via HDMI	2 via HDMI	Max 2 via DVI-D, HDMI or VGA (need cable adapter for HDMI & VGA)	N/A
Down-converted output	2x SDI	N/A	N/A	N/A
Video output	2x SDI assignable PGM, PVW, AUX & Clean Out 1x HDMI assignable PGM & Multi-view	6x SDI Outputs assignable: AUX 1-4, PGM, PVW, PGM Clean or Multi-view 1x HDMI assignable PGM or Multi-view	2x CV PGM 2x CV AUX1 2x CV AUX2 1x DVI-D Multi-view Option: 2x DV & 2x SDI	1x CV, 1x S-Video or 1x YUV 1x CV Quad PVW
Audio input	4x Balanced XLR	4x Balanced XLR	2x Balanced XLR (Line / Mic) 2x Unbalanced RCA (Stereo pair)	2x 1/4" Mic jack 2x Unbalanced RCA (Stereo pair)
Audio output	2x Balanced XLR	2x Balanced XLR	2x Balanced XLR 2x Unbalanced RCA (Stereo pair)	2x Unbalanced RCA (Stereo pair)
Embedded audio support	Input up to 16 channels, Output 4 channels	Input up to 16 channels, Output 4 channels	Out only (optional DV & SDI)	N/A
Audio Delay Calibration	Up to 8 frames	N/A	Up to 700ms or 17 frames	N/A
A+V switching	Yes	Yes	Yes	N/A
DSK	2x DSK support Lumakey & Linear key (Key / Fill)	1x DSK support Lumakey & Linear key (Key / Fill)	1x Lumakey	N/A
Picture in Picture	2	2	2	1
Logo Insertion	2 (or 1 logo + 1 clock)	2 (or 1 logo + 1 clock)	2	N/A
Built-in Audio Mixer	N/A	N/A	3 channels	3 channels
Built-in Intercom & Tally	8 channels (4 belt-packs incl.)			N/A
Dimension (LxWxH)	455 x 355 x 134 mm			555 x 430 x 155 mm
Weight	9 Kg, Reinforce Plastic Case			9Kg, Aluminium Case

HD/SD 12-Channel Digital Video Switcher
SE-2800



Model	SE-3000	SE-2800	SE-2200
Video Standard	HD & SD	HD & SD	HD
Video Format	1080i 50/59.94/60Hz 720P 50/59.94/60Hz 576i 50Hz, 480i 59.94Hz	1080i 50/59.94/60Hz 576i 50Hz, 480i 59.94Hz	1080i 50/59.94/60Hz 576i 50Hz, 480i 59.94Hz 720p 50/59.94/60 Hz
Video Processing	SDI: 4:2:2 HDMI: YUV 4:2:2, RGB 4:4:4	SDI: 4:2:2 HDMI: YUV 4:2:2, RGB 4:4:4	SDI: 4:2:2 HDMI: YUV 4:2:2, RGB 4:4:4
Input Routable / Crosspoint	Up to 16, not repeatable	Fixed	All 6, repeatable
Video Input	Standard: 8x SDI, 1x DVI-D (on CH8) Max: 16x SDI, 1x DVI-D (on CH8)	Standard: 8x SDI, 2x HDMI, 4x CV Max: 12x SDI, 3x HDMI, 6x CV	6x HD-SDI, 2x HDMI (on CH5 & 6)
Mix HD & SD source	Up to 8 built-in up-converter for 12- or 16-input versions only	Yes	N/A
Computer Graphic Interface	1 via DVI-D or HDMI	Max 3 via HDMI	2 via HDMI
Video output	1x SDI PGM, 1x SDI PVW 4x SDI AUX 2x SDI assignable PGM, PVW & Multi-view 1x DVI-D assignable PGM, PVW & Multi-view 1x HD-YUV, 1x Y/C (SD mode only)	3x SDI assignable PGM, PVW, AUX & Clean Out 2x HDMI assignable PGM & Multi-view	6x SDI Outputs assignable: AUX 1-4, PGM, PVW, PGM Clean or Multi-view 2x HDMI assignable PGM & Multi-view
Down-converted output	N/A	Yes, 2x SDI (CH2 & CH3)	N/A
Built-in Multi-view monitoring out	2x SDI & 1x DVI-D	2x HDMI	2x HDMI
Audio input	4x Balanced XLR	4x Balanced XLR	4x Balanced XLR
Audio output	2x Balanced XLR	2x Balanced XLR	2x Balanced XLR
Embedded audio support	Both In & Out (SDI), up to 16 channels	Input up to 16 channels, Output 4 channels	Input up to 16 channels, Output 4 channels
Audio Delay Calibration	N/A	Up to 8 frames	N/A
A+V switching	Yes	Yes	Yes
DSK	2x DSK support Lumakey & Linear key (Key / Fill)	2x DSK support Lumakey & Linear key (Key / Fill)	1x DSK support Lumakey & Linear key (Key / Fill)
ChromaKey	2 Keyers	N/A	N/A
Picture in Picture	2	2	2
Logo Insertion	Via DSK or Keyers	2 (or 1 logo + 1 clock)	2 (or 1 logo + 1 clock)
Still Store	2, up to 999 HD images	12 HD images	6 HD images
Effects	1.5 M/E w/ FlexSource 2D/3D DVE, FTB, Cut, 32 Wipe with border	FTB, Cut, 8 Wipe with border	FTB, Cut, 8 Wipe with border
Transition Preview	Yes, Transition & Effect	PIP & DSK	PIP & DSK
Sync / Reference In/Out	Built-in Genlock Support external sync with loop thru	Built-in Genlock Support external sync with loop thru	Built-in Genlock
Tally Output	1x D-sub 37pin, dual color	1x D-sub 25pin, dual color	1x D-sub 25pin, dual color
PC Remote Control	Via Ethernet (free Window software) or RS-422	Via Ethernet (free Window software) or RS-422 / RS-232	Via Ethernet (free Window software) or RS-422 / RS-232
Built-in Audio Mixer	N/A	N/A	N/A
Special Features	7 touch screen Menu select Macro Memory Preset: 999 w/ 8 quick recall slots	2-CH SD downconvert output	6x6 Matrix seamless switch
Chassis	2 units, rack-mount mainframe	2 units, rack-mount mainframe	2 units, rack-mount mainframe
Power	Switcher: DC 12V 76W Panel: DC 12V 10W	DC 12V 48W	DC 12V 36W

HD 6-Channel Digital Video Switcher
SE-2200



Model	SE-1200MU	SE-600	SE-500
Video Standard	HD	SD	SD
Video Format	1080i 50/59.94/60Hz 720P 50/59.94/60Hz	NTSC, PAL	NTSC, PAL
Video Processing	SDI: 4:2:2 HDMI: YUV 4:2:2, RGB 4:4:4	4:2:2	4:2:2
Input Routable / Crosspoint	Up to 6, not repeatable	All 8, repeatable	Fixed
Video Input	4x HD-SDI 2x HDMI (RGB/YUV, 1080i/1080P/720P)	6x CV, 1x DVI-D (or HDMI) 1x DVI-I (or VGA)	4x CV or 4x Y/C
Mix HD & SD source	N/A	Up to 2 built-in down-converter on DVI-D & DVI-I input	N/A
Computer Graphic Interface	2 via HDMI	2 via DVI-D, HDMI or VGA	N/A
Video output	2x HD-SDI 2x HDMI assignable PGM(w/DSK 1&2), PGM(w/DSK 1), PGM Clean, PVW(w/o DSK), Multi-view, Input 1-6	PGM: 2x CV + 1x Y/C or 1x CV + 1x YUV 2x CV AUX1 2x CV AUX2 2x DVI-D Multi-view Option: 2x DV & 2x SDI	2x CV & 1x Y/C or 1x CV & 1x YUV 1x CV Quad PVW
Down-converted output	N/A	N/A	N/A
Built-in Multi-view monitoring out	HDMI & Ethernet (MJPEG)	2x DVI-D	1x CV
Audio input	2x Balanced XLR	2x Balanced XLR (Line / Mic) 2x Unbalanced RCA (pair)	2x 1/4" Mic jack 2x Unbalanced RCA (pair)
Audio output	N/A	2x Balanced XLR 2x Unbalanced RCA (pair)	2x Unbalanced RCA (pair)
Embedded audio support	Both In & Out (SDI), up to 16 channels	Out only (optional SDI & DV out) 2 channels	N/A
Audio Delay Calibration	N/A	Up to 700ms / 17 frames	N/A
A+V switching	Yes	Yes	N/A
ChromaKey	2 Keyers	N/A	N/A
DSK	2x DSK support Lumakey & Linear key (Key / Fill)	1x Lumakey	N/A
Picture in Picture	1	2	1
Logo Insertion	Via DSK or Keyer	2	N/A
Still Store	2	1 Frame store	N/A
Effects	FTB, Cut, 32 Wipe with border	FTB, Cut, Mosaic, Paint, Monochrome, 14 Wipe with border	Quad, Split, 11 Wipe with border
Transition Preview	Yes, Transition & Effect	Yes, Transition & Effect	Yes
Sync / Reference In/Out	N/A	Built-in Genlock	Built-in Genlock
Tally Output	1x D-sub 15pin, dual color	2x D-sub 15pin, dual color	1x D-sub 15pin, dual color
PC Remote Control	Via Ethernet (free Window software) or RS-422	Via RS-422	Via RS-232
Built-in Audio Mixer	N/A	3 channels	3 channels
Special Features	Motion JPEG Multi-view streaming	3 Macro Memory Preset	
Chassis	1RU Rack-mount w/ front panel button	Unibody	Unibody
Power	DC 12V 30W	DC 12V 33W	DC 12V 18W



Model	TLM-170P/PM/PR	TLM-170G/GM/GR	TLM-702HD	TLM-702
Screen	17.3" LED Back-Lit	17.3" LED Back-Lit	2x7" LED Back-Lit	2x7" TFT LCD
Chassis	Tabletop (170P) 1RU Pull-Out (PM) 7RU Rack Mount (PR)	Tabletop (170G) 1RU Pull-Out (GM) 7RU Rack Mount (GR)	3RU Rack Mount	3RU Rack Mount
Resolution	1920x1080	1600x900	800x480	480x234
Viewing Angle	(H) +80/-80° (V) +60/-80°	(H) +40/-45° (V) +45/-45°	(H) +70/-70° (V) +50/-70°	((H) +60/-60° (V) +40/-60°
Luminance/Contrast	400cd/m2 600:1	220cd/m2 500:1	300cd/m2 500:1	500cd/m2 300:1
Video Inputs	1x 3G/HD/SD-SDI 2x HDMI 1x HD/SD-YUV 2x Composite Video	1x 3G/HD/SD-SDI 2x HDMI 1x HD/SD-YUV 2x Composite Video	2x HD/SD-SDI 2x HD/SD-YUV 2x HDMI 2x Composite Video	4x Composite Video
Loop Through	1x 3G/HD/SD-SDI 1x Composite Video	1x 3G/HD/SD-SDI 1x Composite Video	N/A	4x Composite Video
Supported Input Resolutions	1080p(23.98/24/25/30/50/59.94/60Hz), 1080i(50/59.94/60Hz), 720p(50/59.94/60Hz), 480i(NTSC), 576i(PAL)	1080p(23.98/24/25/30/50/59.94/60Hz), 1080i(50/59.94/60Hz), 720p(50/59.94/60Hz), 480i(NTSC), 576i(PAL)	1080i(50/60Hz) 720p(50/60Hz) 480i(NTSC) 576i(PAL)	480i(NTSC) 576i(PAL)
Aspect Ratio	16:9, 4:3	16:9, 4:3	16:9, 15:9, 4:3	16:9, 4:3
Tally LED	Live (Red) Cued (Amber)	Live (Red) Cued (Amber)	Live (Red) Cued (Amber)	Live (Red) Cued (Amber)
Audio In/Out	Embedded Audio on SDI and HDMI 3 x Mono RCA Inputs Stereo Speakers	Embedded Audio on SDI and HDMI 3 x Mono RCA Inputs Stereo Speakers	Embedded Audio on SDI and HDMI Audio Level Indicator, 2x Stereo Headphone Jack	N/A
Special Features	3G-SDI Support, Picture-in-Picture, Blue Only, Audio Level Indicator, Safe Frame, Pixel Zoom up to 8x, Network IP Remote, SDI Time Code Display	3G-SDI Support, Picture-in-Picture, Blue Only, Audio Level Indicator, Safe Frame, Pixel Zoom up to 8x, Network IP Remote, SDI Time Code Display	Blue Only, Safe Frame, SDI Time Code Display, Audio Level Indicator, Safe Frame	Dual Screens, Dual Inputs and Dual Loop-Through per Screen
Power	DC 12V, 30 watts	DC 12V, 18 watts	DC 12V, 30 watts	DC 12V, 12 watts

17.3" HD/SD 1080P LCD Monitor
TLM-170P



Datavideo's TLM-170P is a desktop video monitor that delivers superb image quality. It features a 3G-SDI input, a 1920x1080P full HD industrial grade LCD panel, an 8-channel embedded audio monitor and HDMI and HD-SDI inputs. Calibrated for video use and featuring professional inputs, it is ideal for live HD production and post-production environments. It is easy to use, robust, has a long LCD life span and is able to deliver excellent performance for years.

7RU Rack
TLM-170PR



1RU Pull-Out
TLM-170PM



Model	TLM-700HD	TLM-700	TLM-434H	TLM-430
Screen	7" LED Back-Lit	7" TFT LCD	4x4.3" TFT LCD	4.3" TFT LCD
Chassis	Camera Mount	Camera Mount	2RU Rack Mount	Camera Mount
Resolution	800x480	480x234	480x272	480x272
Viewing Angle	(H) +70/-70° (V) +50/-70°	(H) +60/-60° (V) +40/-60°	(H) +80/-80° (V) +80/-80°	(H) +80/-80° (V) +80/-80°
Luminance/Contrast	300cd/m2 500:1	500cd/m2 300:1	320cd/m2 400:1	320cd/m2 400:1
Loop Through			4x HD/SD-SDI	
Video Inputs	1x HD/SD-SDI 1x HD/SD-YUV 1x HDMI 1x Composite Video	2x Composite Video	4x HD/SD-SDI 4x HDMI	2x Composite Video
Supported Input Resolutions	1080i(50/60Hz) 720p(50/60 Hz) 480i(NTSC) 576i(PAL)	480i(NTSC) 576i(PAL)	1080i(50/60Hz) 720p(50/60 Hz) 480i(NTSC) 576i(PAL)	480i(NTSC) 576i(PAL)
Aspect Ratio	16:9, 15:9, 4:3	16:9, 4:3	16:9, 4:3	16:9, 4:3
Tally LED	Live (Red) Cued (Amber)	N/A	Live (Red) Cued (Amber)	Live (Red) Cued (Amber)
Audio In/Out	Embedded Audio on SDI and HDMI Audio Level Indicator, 1x Stereo Headphone Jack	N/A	Embedded Audio on SDI and HDMI, Audio Level Indicator, 4x Stereo Headphone Jack	N/A
Special Features	Blue Only, Safe Frame, SDI Time Code Display, Audio Level Indicator, Safe Frame, Image Flip, Can powered by batteries (Not Included)	Carrying Case Included, Sunshade Included	Blue Only, Embedded Time Code Indicator, Safe Frame	Can be powered by DC adaptor, Sony batteries or D-TAP. TLM-43LB Camera look back system (with RMC-200 and control cable)
Power	DC 12V, 18 watts	DC 12V, 6 watts	DC 12V, 15 watts	DC 12V, 6 watts

VGA to HDMI/ SDI Up/ Down/ Cross Converter

DAC-70

- 3G/HD/SD Up/Down/Cross convert
- Audio/HDMI/SDI/VGA input
- 3G/HD/SD SDI and HDMI output
- Can be rackmounted using optional RMK-2 2RU Rack solution
- DC 12V, 3.6 watts



Model	DAC-70	DAC-60	DAC-50
Conversion	VGA/HDMI/SDI to HDMI/SDI Multi-format Up/Down/Cross	3G/HD/SD SDI to VGA	HD/SD SDI to Analog Up/Down/Cross
Video Inputs	Sel.: 1x VGA, 1x HDMI, 1x 3G/HD/SD-SDI	1x 3G/HD/SD-SDI	1x HD/SD-SDI
Loop Through	Yes	Yes	N/A
Video Outputs	2x SD-SDI with embedded Audio	1x VGA	1x HD/SD-YUV or Composite Video
Audio Inputs	2 x RCA (Stereo Pair)	N/A	N/A
Audio Embedding	2 channels HDMI/SDI Audio or RCA Audio input embedded into HDMI/SD-SDI Signals	N/A	N/A
Supported Video Input Format	800x600 (60Hz), 1024x768(60Hz), 1280x1024(60Hz), 1366x768(60Hz), 1400x1050(60Hz), 1600x1200(60Hz), 480i (NTSC), 576i (PAL), 720p (50/59.94/60Hz), 1080i (50/59.94/60Hz), 1080p(23.98/24/25/29.97/30/50/59.94/60Hz)	480i (NTSC), 576i (PAL), 720P (50/59.94/60Hz), 1080i (50/59.94/60Hz), 1080p (23.98/24/25/29.97/30/50/59.94/60Hz)	480i (NTSC), 576i (PAL), 720P (50/59.94Hz), 1080i(50/59.94Hz)
Output Resolutions	Sel.: 480i, 576i, 720p (50/59.94/60Hz), 1080i (50/59.94/60Hz), 1080p (50/59.94/60Hz)	Sel.: 800x600 (60Hz), 1024x768 (60Hz), 1280x1024 (60Hz), 1366x768 (60Hz), 1400x1050 (60Hz), 1600x1200 (60Hz)	Sel.: 480i, 576i, 720p (50/59.94Hz), 1080i (50/59.94Hz)
Equalizer	Yes	-	Yes
Reclock	Yes	Yes	-
SDI Cable Drive	Yes	Yes	-
Power	DC 12V, 7.2 watts	DC 12V, 3.6 watts	DC 12V, 6.0 watts
Remarks	- Heavy duty design, robust metal casing - Low power consumption (30 ~ 50% less than regular converters) - Low heat dissipation, ideal for long hour operation in normal ventilated environment - Supports wide range of 3G video formats including 1080p 50/59.94/60Hz (DAC-8P/9P/60/70) - Supports YUV and RGB color space (DAC-8P/9P/60/70)		

2x6 3G HD/SD-SDI Distribution Amplifier

VP-597



- 2 x 3G/HD/SD-SDI inputs
- 6 x 3G/HD/SD-SDI distribution outputs
- Supports embedded Audio SDI
- Supports video formats:
- 3G-SDI | HD-SDI: 1080P 50/59.94/60/ 23.98/24/25/30
- SD-SDI 1080i 50/59.4/60/525i /625i/720P/50/59.94/60
- Two input video sources can be controlled by A/B switch or GPI remote

1-4 HD/SD-SDI Distribution Amplifier

VP-445



- Four way HD/SD SDI Distribution Amplifier with Embedded Audio
- Supports multi – standard Operation SD-SDI (SMPTE 259M and SMPTE 344M)
- Supports HD-SDI (SMPTE 292M)

2RU Rackmount Kit

RMK-2

- Rackmount Frame to hold up to 8 DAC Converters
- Built in power distributor for up to 8 converters
- Suitable for DAC-8P, DAC-9P, DAC-60, DAC-70, DAC-80 and future DAC converters



Model	DAC-9P	DAC-8P	DAC-7/ 7L
Conversion	HDMI to 3G/HD/SD SDI	3G/ HD/SD SDI to HDMI	SD Analog to SD-SDI
Loop Through	N/A	N/A	N/A
Video Inputs	1x HDMI	1x 3G/HD/SD-SDI	Sel.: 1x CV, 1x YUV, 1x S-Video
Video Outputs	2x 3G/HD/SD-SDI with embedded Audio	1x HDMI with embedded Audio	2x SD-SDI with embedded Audio
Audio Inputs	N/A	2 x RCA (Stereo Pair)	2x RCA (Stereo Pair) 2x XLR (Stereo Pair)
Audio Embedding	2 channels HDMI Audio Embedded into HD/SD-SDI Signal	2 channels SDI Audio or RCA Audio input embedded into HDMI Signal	2 channels XLR or RCA Audio input embedded into SD-SDI Signal
Supported Video Input Format	480i (NTSC), 576i (PAL), 720P (50/59.94/60Hz), 1080i (50/59.94/60Hz), 1080p (23.98/24/25/29.97/30/50/59.94/60Hz)	480i (NTSC), 576i (PAL), 720P (50/59.94/60Hz), 1080i (50/59.94/60Hz), 1080p (23.98/24/25/29.97/30/50/59.94/60Hz)	480i(NTSC), 576i(PAL)
Output Resolutions	Automatically matches the SD, HD and 3G HDMI video input	Automatically matches the SD, HD and 3G SDI video input	Automatically matches the NTSC, PAL video input.
Equalizer	-	Yes	-
Reclock	-	Yes	-
SDI Cable Drive	Yes	Yes	Yes
Power	DC 12V, 5 watts	DC 12V, 4 watts	DC 12V, 2.4 watts
Remarks	- Heavy duty design, robust metal casing - Low power consumption (30 ~ 50% less than regular converters) - Low heat dissipation, ideal for long hour operation in normal ventilated environment - Support wide range of 3G video formats including 1080p 50/59.94/60Hz (DAC-8P/9P/60/70) - Support YUV and RGB color space (DAC-8P/9P/60/70)		

DAC Series Battery Holder

MB-4



DAC Series Tripod Mount

MB-5



VS-100 Battery Mount Kit

MB-6



BATTERY COMPARISON TABLE								
Battery	SONY NP-F970	SONY NP-F770	SONY BP-U60	SONY BP-U30	Panasonic CGA-D540	Canon BP-975	JVC BN-VF823	
Model	7.2V / 5400mAh	7.2V / 3000mAh	14.4V / 5200mAh	14.4V / 2600mAh	7.2V / 5400mAh	7.4V / 7350mAh	7.2V / 2190mAh	
DAC-7	12W 190min	100min	190min	180min	190min	270min	70min	
DAC-8P	4W 580min	320min	1120min	560min	580min	815min	230min	
DAC-9P	5W 460min	250min	890min	440min	460min	650min	180min	
DAC-50	18W 120min	70min	240min	120min	120min	180min	50min	
DAC-60	6W 380min	210min	740min	370min	385min	540min	150min	
DAC-70	7.2W 320min	180min	620min	310min	320min	450min	130min	
VS-100	3.6W 640min	360min	1240min	620min	640min	900min	380min	

HD/SD Digital Video Recorder
HDR-60

HDR-60 is a hard disk recorder, with removable hard drives. The HDR-60 records from both High and Standard Definition video equipment via HD/SD-SDI. It comes with two removable hard drive enclosures, and is compatible with 2.5" SATA HDD and SSD drives. Once you have completed your recording, simply eject the hard drive enclosure and use USB 2.0 to connect to a PC or MAC based NLE system. The USB port provides power to the unit. You can work directly from the removable drive, or copy video files to your NLE's video drives.



Model	HRS-30HD	HDR-60	HDR-70	DN-600	DN-700	DN-60A
Video Standard	HD & SD			SD & HD-ready (HDV)		SD & HD-ready (HDV)
Video Format	1080P 23.97/24Hz, 1080i 50/59.94/60Hz, 720P 50/59.94/60Hz, 525i/ 625i	1080P 23.97/24Hz, 1080i 50/59.94/60Hz, 720P 50/59.94/60Hz, 525i/ 625i		SD: NTSC, PAL DV/DVCPPro25: 576i 50Hz, 480i 59.94/60Hz HDV: 1080i 50/59.94/60Hz, 720P 50/59.94/60Hz		DV/DVCPPro25/DVCP50: 576i 50Hz, 480i 59.94/60Hz HDV: 1080i 50/59.94/60Hz, 720P 50/59.94/60Hz
Supported Video Input Signal	1x SDI	1x SDI		1x CV 1x DV / HDV (IEEE1394 6-pin)		1x DV / HDV (IEEE1394 6-pin)
Monitoring/ Playback output	1x SDI (input loop thru) 1x HDMI, 1x SDI (Out)	1x SDI (input loop thru) 1x HDMI, 1x SDI (Out)		1x CV 1x DV / HDV (In/Out share)		1x DV / HDV (In/Out share)
Analog Audio Input & Audio Output	N/A (input) 3.5Ø phone jack (output)	2x Balanced mini XLR (Stereo pair)	2x Balanced XLR (Stereo pair)	2x Balanced XLR (Stereo pair) 2x Unbalanced RCA (Stereo pair)		N/A
Embedded Audio	SDI Input / Output (8CH) HDMI Output (8CH)	Yes, both In & Out (8-CH on SDI & 4-CH on HDMI)		Yes, on DV / HDV In/Out (2-CH)		Yes, on DV / HDV In/Out (2-CH)
Storage Medium	Max capacity 750GB on HDD SSD: 120GB / 256GB	2.5" Hard Drive / SSD*, Max capacity 750GB		2.5" Hard Drive / SSD*, Max capacity 750GB		Compact Flash card*
Estimated Record Time (min per 10GB)	SD: 22 (50Mbps) ~ 75 (8Mbps) HD: 10 (125Mbps) ~ 68 (10Mbps)	SD: 22 (50Mbps) ~ 75 (8Mbps) HD: 10 (125Mbps) ~ 68 (10Mbps)		SD / DV: 46 HDV: 50 (1080i) ~ 65 (720P)		SD / DV: 46 HDV: 50 (1080i) ~ 65 (720P)
How to Retrieve Recorded Content	Removable Hard Drive / SSD, transfer data via USB 2.0, USB 3.0 (Q4, 2014)	Removable Hard Drive / SSD, transfer data via USB2.0		- Removable Hard Drive/ SSD, transfer data via USB2.0 - transfer via IEEE1394 (Firewire, in HDD mode)		Removable CF card, transfer via card reader
Storage File System	NTFS	NTFS (read/write on Window, read only on MAC)		NTFS, FAT32 (read/write on Window & MAC)		NTFS, FAT32 (read/write on Window & MAC)
Recorded File Format	MXF OP1A, MOV	MXF OP1A, MOV		SD / DV: AVI, MXF OP1A, MOV HDV: M2T		SD / DV: AVI, MXF OP1A, MOV HDV: M2T
Video Recording Bit Rate/ Color Sampling	MPEG2 Long GOP HD 10Mbps 4:2:0 25Mbps 4:2:0 1440x1080/1280x720 35Mbps 4:2:2 50Mbps 4:2:2 65Mbps 4:2:2 120Mbps 4:2:2 1920x1080/1280x720 MPEG2 Long GOP SD 8Mbps 4:2:0 15Mbps 4:2:2 30Mbps 4:2:2 50Mbps 4:2:2 720x480/720x576 MPEG2 I-Frame Only HD 100Mbps 4:2:2 125Mbps 4:2:2 1920x1080/1280x720 MPEG2 I-Frame Only SD 25Mbps 4:2:2 50Mbps 4:2:2 720x480/720x576	SD: 8Mbps, 4:2:0 15Mbps, 4:2:2 25Mbps, 4:2:2 (I-frame) 30Mbps, 4:2:2 (I-frame) 50Mbps, 4:2:2 (GOP, I-Frame) HD: 10Mbps, 4:2:0 25Mbps, 4:2:0 35Mbps, 4:2:2 50Mbps, 4:2:2 65Mbps, 4:2:2 120Mbps, 4:2:2 100Mbps, 4:2:2 (GOP, I-Frame) 125Mbps, 4:2:2 (GOP, I-Frame)		SD / DV: 25Mbps, 4:2:0 DVCPPro25: 25Mbps, 4:1:1 HDV: 25Mbps, 4:2:0		SD / DV: 25Mbps, 4:2:0 DVCPPro25: 25Mbps, 4:1:1 DVCPPro50: 25Mbps, 4:2:2 HDV: 25Mbps, 4:2:0
Audio Recording Format	Uncompressed PCM	Uncompressed PCM Sampling rate 48KHz 24bit		MPEG-1 Layer 2, 384kbps Sampling rate 48KHz (16bit), 32KHz (12bit)		MPEG-1 Layer 2, 384kbps Sampling rate 48KHz (16bit), 32KHz (12bit)
Time code in/out	Yes	Yes		Yes		Yes, via embedded DV/HDV only
External Sync/ Genlock	Yes, Black Burst & Tri-level w/ loop thru	Yes, Black Burst & Tri-level with loop thru		N/A		N/A
Power failure protection		Content saved up to last second before power failure				
Chassis	Desktop	Desktop 1RU 19" rack-mountable		Desktop 1RU 19" rack-mountable		Handheld, Camera-mountable via Ball-head

* Check compatible storage on the Datavideo website

DV Prompter
TP-300



A teleprompter allows a presenter to look into the camera lens and read a script from a reflected screen equipped with beam-splitter glass. Most teleprompters are for use in the studio but the Datavideo TP range can be used anywhere! Convert Apple or Android smartphones and tablets into cost-effective and easy to use prompter solutions. Scripts can be easily loaded, character's font, size, color and scrolling speed are all adjustable. Wired and optional Bluetooth remotes allow users to control the speed to achieve natural results.



The dv prompter application is available to download Free from Apple™ App Store™ & Google Play.



Model	TP-100	TP-300	TP-500	TP-600
Camera Used	Handheld Cameras	HD/SD Camcorders	DSLR Cameras	ENG Cameras
Device Used	iPod Touch, iPhones & Android Smartphones	Apple iPads Android Tablets	Apple iPads Android Tablets	Apple iPads Android Tablets
Multi-language support	Yes, device dependent including Arabic and Asian languages such as Chinese, Japanese, Korean, Hindi, Tamil and more			
Smartphone/ Tablet Size	Min. Dimension: 105x70mm Max. Dimension: 125x80mm	Min. Tablet Width: 105mm Max. Tablet Width: 198mm	Min. Tablet Width: 105mm Max. Tablet Width: 198mm	Min. Tablet Width: 105mm Max. Tablet Width: 198mm
Hood Dimension/ Prompter Size	Width: 190mm Height: 140mm Depth: 135mm	Width: 250mm Height: 210mm Depth: 447mm	Width: 250mm Height: 210mm Depth: 447mm	Width: 250mm Height: 210mm Depth: 447mm
Remote Control	Wired Remote (inclusive) with headset jack input for Apple iOS devices and some Android devices *Optional Universal Bluetooth Wireless Remote (with USB cable adapter for charging purposes)			
Camera-Mount Interface	Stepping Rings (30.5mm to 94mm)	Prompter Frame	Adjustable Camera Plate	Prompter Rail
Net Weight	0.47 Kg	1.9 Kg	1.9 Kg	1.9 Kg

Portable CG Solution

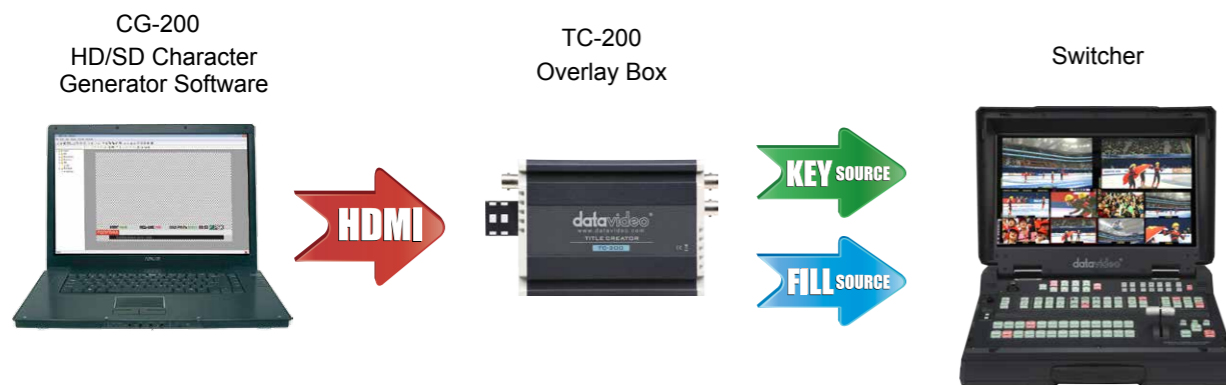
HD / SD Character Generator Kit TC-200+CG-200

The combination of the TC-200 overlay unit and CG-200 brings broadcast-quality live titling to the laptop. Users can now create beautiful motion graphics in real-time without the need for a dedicated workstation - it's a significant breakthrough.

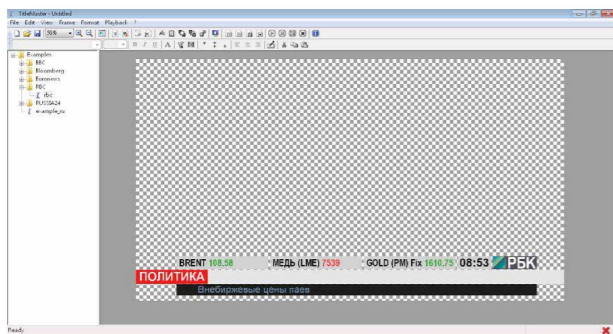
- Includes TC-200 (Overlay box) & CG-200 (Character Generator Software)
- Supports DSK function (via HDMI) or SDI overlay function
- Support HD/SD SDI input and output in Overlay mode
- Supports HD video with 1080i 50/59.94/60; 720p 50/59.94/60
- Compatible with Windows 7/8
- Supports all Windows fonts



- Multi-language support
- Supports animation including JPG, TAG, GIF, BMP, PNG
- Title editing patterns include Slide, Reveal, etc.
- Supports scrolling
- Easy logo set up
- TC-200 working voltage is 7-15V. It can be used with 7.2 V & 14.4 V batteries



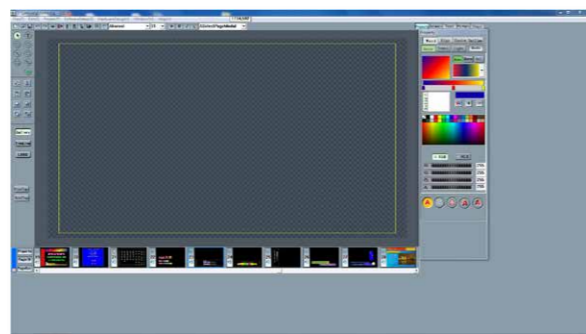
CG-200



CG-200 Example



CG-10HD (Optional)



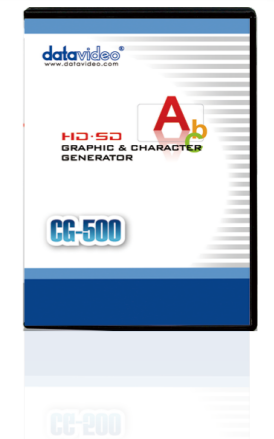
CG-10HD Example



HD/SD Graphic & Character Generator CG-500

The Windows based Datavideo CG-500 graphics, titling, and character generator software is a powerful multi-layer, real-time solution for live programming and post production. It is compatible with widely available professional video hardware and supports the flexible play-out of multiple playlists, or Datavideo's TC-200 device while titles are being created. CG-500 can be used for SD or HD news, reports, weather forecasts, and entertainment programming.

Hundreds of key frame based GPU effects, such as Swirl, Explode, and Linear Light can be rendered in real-time. The software features innovative group and text playing by character, by line, and by text, with fully dynamic textures.



Applications



Model	CG-500	CG-350	CG-10HD	CG-200	CG-100
SD resolution	•	•	•	•	•
HD resolution	•	•	•	•	•
Manual playback control	•	•	•	•	•
Playlists	•	•	•	•	•
Scheduling	•	•	•	•	•
Dynamic Data integration	•	•	•	•	•
Database integration	•	•	•	•	•
Live 3D graphics	•	•	•	•	•
Animated logo / sequence	•	•	•	•	•
Fast graphics rendering	•	•	•	•	•
Keyframe control	•	•	•	•	•
Capture Video Frame	•	•	•	•	•
Template-based	•	•	•	•	•
Media library	•	•	•	•	•
Recommended Video Card for both Internal/External key	Decklink 4K Extreme	Datavideo TC-200	Datavideo TC-200	Datavideo TC-200	Decklink SDI / Studio

HD/SD-SDI PTZ Camera

PTC-150



Control Unit
RMC-180



1-4 Camera Control

HD/SD-SDI PTZ Camera

PTC-120



Control Unit
RMC-190



1-7 Camera Control

Model	PTC-150	PTC-120
Video format	1080p 60 /59.94 /50 /30 /29.97 /25 Hz 1080i 60 /59.94 /50 Hz 720p 60 /59.94 /50 Hz 480i, 576i (on CVBS)	1080p 60 /50 /30 /29.97 /25 Hz 1080i 60 /50 Hz 720p 60 /50 Hz 480i, 576i (on CVBS)
Image Sensor	1/2.8 type MOS	1/2.8 type MOS
Effective Pixels (approx.)	2 Megapixels	2 Megapixels
Min. Illumination	Color: 0.4 Lux, B/W: 0.03 Lux	5 Lux
Electronic Shutter	1/1 ~ 1/16,000 sec	1/1 ~ 1/10,000 sec
Zoom Ratio	22x Optical zoom	20x Optical zoom ; 12x Digital zoom
Gamma	Yes, 4 modes	Yes, 4 modes
Iris Control	Auto / Manual	Auto
Digital Noise Reductions	Yes	2D & 3D
White Balance	ATW / AWC / Manual (Adjustable R and B signals) / Outdoor / Indoor / Fluorescent	Auto / Indoor / Outdoor / One-Push / Manual
AGC / Gain Control	Low1 / Low2 / Low / Mid1 / Mid / High1 / High / OFF (Gain adjustable) Mirror / Flip Image	Auto / Manual
Mirror / Flip Image	Yes	Yes
Focus Mode	Auto / Manual / One-Push / STOP-AF	Auto / Manual
Panning/Tilting Range	Pan: 270° , Tilt: +90° to -20°	Pan: 340° , Tilt: +90° to -30°
Panning/Tilting Speed	1~150°/Sec	1~300°/sec
Preset	50 Position	128 Position
Field of View (Horizontal, Wide)	65.1°	63°
Image Compensation	Dehazing, Day & Night function	Backlight, Exposure
Video Output	3G-SDI x 1 HDMI x 1 CVBS x 1	3G-SDI x 1 DVI-D x 1 Component x 1 CVBS x 1
Tally LED	Yes, dual color	N/A
Remote Control Interface	RS-422, DVIP (RJ45)	RS-232 & RS-422
Model	RMC-180	RMC-190
Maximum Camera Control	4	7
Preset Position	4 for each camera	128 for each camera
Control Protocol	Sony VISCA	Sony VISCA
Connection to Cameras	Point to Point	Daisy Chain

Multi-camera Control Unit

MCU-100P

Panasonic

MCU-100S

SONY



MCU-100 and MCU-200 are designed to control up to four camcorders in studio multicam configuration, giving the producer the ability to match and manage the settings of multiple cameras. Small, compact and light weight, the handheld unit MCU-100 and the rack-mounted MCU-200 control all major image settings, such as iris, master pedestal and gain. They are easy to use in a pressurized environment, giving the camera operator the freedom to concentrate on framing each shot.

- Wide range of control functions include:
 - Gain Up/Down
 - Output Cam/Bar Selection (linked to Auto Knee)
 - White Balance A/B/Preset, AWB/ABB Execution
 - Shutter SS/Fix/Off Selection and Speed Setting
 - Iris Auto/Manual Selection and Adjustment

- Master Pedestal, Peaking
- Camera Menu Operation, Recorder Operation (Rec/Play/FF/Rew/Rec Check)
- User Buttons (3), Character On/Off
- Memory function for camcorder settings
- USB interface for firmware update
- Remote control distance up to 1000m
- Bundled with four remote control cable adapters
- Supported Panasonic camcorders: AG-HPX255, AG-HPX600, AG-HPX370 / 371 / 372, AG-HPX300 / 301 / 302 /304 / AJ-HPX2700G / AJ-HPX3000 / AJ-HPX3700
- MCU-100S Supports Sony HDCAM, Digital BETACAM, and XDCAM camcorders.

Multi-camera Control Unit

MCU-200



Connecting the MCU-100S/100P/200
Connect AD-1 adaptor to the camera's CAM/BS port. Connect an ethernet cable from the AD-1 to the MCU. Parameters can viewed by connecting monitors to each AD-1 adaptor using a CVBS cable. MCU-100 and MCU-200 utilize locking power connectors.

Camera Remote Adaptor
AD-1S/P
(4 Included)

H.264 Video Streaming Server NVS-20



NVS-20 is a broadcast quality HD/SD H.264 video recorder and network streaming server. It is designed for live event streaming and recording in real-time. Equipped with HD/SD-SDI, HDMI and composite video inputs; NVS-20 supports multiple streaming protocols including: DHCP client, MPEG transport stream over IP (UDP), RTP over HTTP, RTSP and RTMP (Flash).

NVS-20 is an easy-to-use device for HD / SD video streaming over local or global IP networks. The unit is remotely controlled using any Mac, Windows computer or mobile device with a web browser. Users can also view real-time video with audio data through WEB UI.

NVS-20 SPECIFICATION			
Encoded Video Stream	<ul style="list-style-type: none"> H.264/AVC up to High Profile Level 4.0 Up to 1920x1080 @ 30p Configurable bitrate up to 6Mbps 	Audio Encoding	<ul style="list-style-type: none"> AAC-LC Audio Codec 48KHz / 16-bit Sampling Rate Configurable bitrate up to 384Kbps
Video Inputs	<ul style="list-style-type: none"> 1x 3G/HD/SD-SDI 1x CVBS 1x HDMI 	Network Feature	<ul style="list-style-type: none"> DHCP Client RTP/RTSP/RTMP/HLS
Audio Inputs	<ul style="list-style-type: none"> SDI Embedded Audio Supported. (2-Channels) HDMI Embedded Audio Supported (2-Channels) 2x XLR (One Stereo Pair) 2x RCA (One Stereo Pair) 	Control	<ul style="list-style-type: none"> Web UI for System Configuration and Control Shortcut Buttons for Start/Stop Streaming
Outputs	<ul style="list-style-type: none"> 1x RJ-45 Female (10/100 Ethernet) 1x USB 2.0 for Recording to USB Drive 		
Supported Video Resolutions	<ul style="list-style-type: none"> 1080@50p/60p(50p/60p Input, 25p/30p record/output) 1080@50i/59.94i/60i 720p (50/59.94/60Hz) 576i (50Hz) 480i (59.94Hz) 		

NVD-20 IP Video Decoder NVD-20



A wired IP video decoder with HDMI, Composite and analogue audio outputs. The NVD-20 decodes all common IP streams including RTP/RTSP, RTMP, UDP, TCP, HTTP and MPEG-TS and can output SD/HD video at resolutions up to 1080p60. The NVD-20 is the perfect partner to the DataVideo NVS-20 IP encoder allowing full HD point to point video links over Ethernet, WiFi or the Internet.

- Operates on standard 10/100Mb Ethernet networks
- Excellent image quality with very low delay
- Unicast and multicast support
- Supports RTP/RTSP, RTMP, UDP, TCP, HTTP and MPEG-TS
- Feature-rich WebUI for configuration and control
- Built in video scaler
- Supports Full HD video and audio
- Supports HDMI and Composite video output
- Supports simultaneous digital embedded and analogue audio output
- Small form factor, rack mountable
- 7-24V DC input

Network Media Player NVP-20



The DataVideo NVP-20 is a fully automated remote control H.264 video player. The NVP-20 can use any USB storage device as its media source; Video files can then be added to the media player by physically copying them to the USB device or can be transferred over the network using FTP.

Using the feature rich web interface, the user can create and load playlists as well as remotely controlling video playback. With the addition of a USB keyboard, the NVP-20's on screen display means the unit can be used completely standalone without IP control. Video playback can also be triggered via GPI.

- Operates on standard 10/100Mb Ethernet networks
- IP and GPI control
- Support multiple playlists
- Excellent image quality up to 1080p60
- Supports mp4, .H.264, .mkv, .mov, .TS
- IP control supports play next clip, play all clips, loop play all clips, pause, resume and seek
- Supports NTFS and FAT/FAT32 formatted USB storage
- Feature-rich WebUI for configuration and control
- Built-in video scaler
- Supports Full HD video and audio
- Supports HDMI and Composite video output
- Supports simultaneous digital embedded and analogue audio output
- Small form factor, rack mountable using RMK-2
- 7-24V DC input

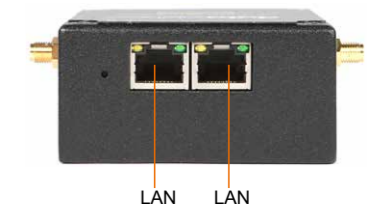
High Power Wi-Fi Bridging Unit NVW-150

NVW-150 is a miniature carrier class WiFi distribution system. Users can connect any network enabled devices via Ethernet to NVW-150 which can then transparently link to a second NVW-150 or NVW-250 with a range of over 250m with the supplied antenna.

- Connect any network (IP) enabled devices over a high throughput long range WiFi link
- Completely transparent, devices connected to either end of the WiFi link will behave exactly as they would if they were connected directly with an Ethernet cable
- Multiple units can be used together (Point to Multipoint)
- Supports transmission speeds up to 450Mb/s
- Supports transmission distances greater than 250m with the supplied antenna (further with optional external antennas).
- Automatically adjusts transmission rates based on current conditions to maintain link stability
- Supports narrow channel widths for increased range and interference immunity
- Can be powered from any DC source (5-20V), 9-24V Passive POE supported
- Wireless profit supports NA (5Ghz 802.11a/n)
- No radio licences required



REAR PANEL



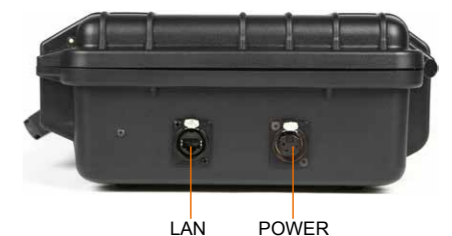
Dual Radio High Power Wi-Fi Bridging Unit NVW-250

Housed in a ruggedized case, NVW-250 is a high-power dual radio WiFi distribution system and local WiFi access point. It transparently links with DataVideo NVW-150/250 units and delivers a range of over 500m with the supplied antennas (further with optional external antennas). It creates a local hotspot to connect devices via WiFi and Ethernet.

- Dual radio design allows one radio to be used for the backhaul between bridging units and the other for as a local access point.
- Ideal for covering larger distances, directional antennas can be used to connect bridging units while the local access point still allows free Omni-directional roaming at each end.
- Supports transmission distances greater than 500m with standard antennae / 10KM with external antennae
- Wireless profit supports either NA (5Ghz 802.11a/n) or NG (2.4Ghz 802.11g/n). Recommend using NG for the local access point for increased device compatibility.
- Dual V-mount battery slot for extended battery life
- Regulated 12V 5A XLR power output for powering external devices
- No radio licences required



SIDE PANEL



Intercom System ITC-100



Communication between the director, camera crew, lighting engineer and control room is essential to produce a polished end result. The ITC-100 Intercom system provides 8-way talkback and tally indicators. The producer can talk to an individual channel or to all channels simultaneously. High S/N ratio makes the communication crisp and clear. The ITC-100 is a standard 19/1U rack design, so it is easy to integrate into any rack system for using in the field or studio.

- Standard 19/1RU rack design
- Supports 8-Way talkback (standard package includes 4 sets of ITC-100SL with belt-pack accessories)
- Additional external earphone and microphone interface
- Dual color tally light indicator
- Selectable channel talk, broadcast to all or mute
- Communication distance up to 200m
- Supplied complete with gooseneck mic and light

HP-1 & HP-2 Headsets (Optional)
ITC-100 comes with MC-1 Headsets. Also available are the heavy duty HP-1 and HP-2 Headsets.



ACCESSORIES (INCLUDED)



Intercom belt pack
4 x ITC100SL cameraman unit including carry case



20m 5-Pin Intercom Cable
4 x 20m XLR to XLR intercom cable



Tally Indicator
Supplied with 4 x camera-mounted tally lights



1.2m GPI Cable
Connection TD-2 tally light with ITC-100 belt pack



Microphone Headset
ITC-100 - supplied with 4 headsets.

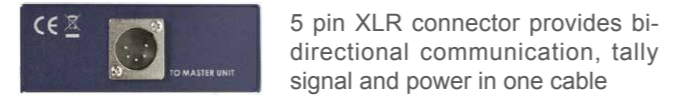


Gooseneck Microphone/Gooseneck Light
XLR gooseneck mic & light

TALKBACK BELTPACK ITC-100SL



REAR VIEW



TALLY LIGHT INDICATOR TD-3



Live HD/SD Chromakeyer DVK-300HD

DVK-300HD is easy and intuitive to use, delivering great results even in the most challenging environments. Most HD chromakey systems are either complex computer-based solutions or included in vision mixers with limited keying features. The DVK-300HD is ideal for users that simply need professional featured and affordable live keying in a portable device. DVK-300HD can be controlled locally the via front panel, or by using a computer direct connected or remotely over an IP network. HDMI and SDI inputs make the DVK-300HD perfect in any live environment, and a range of resolutions including traditional SD resolutions and up-to full HD 1080P.



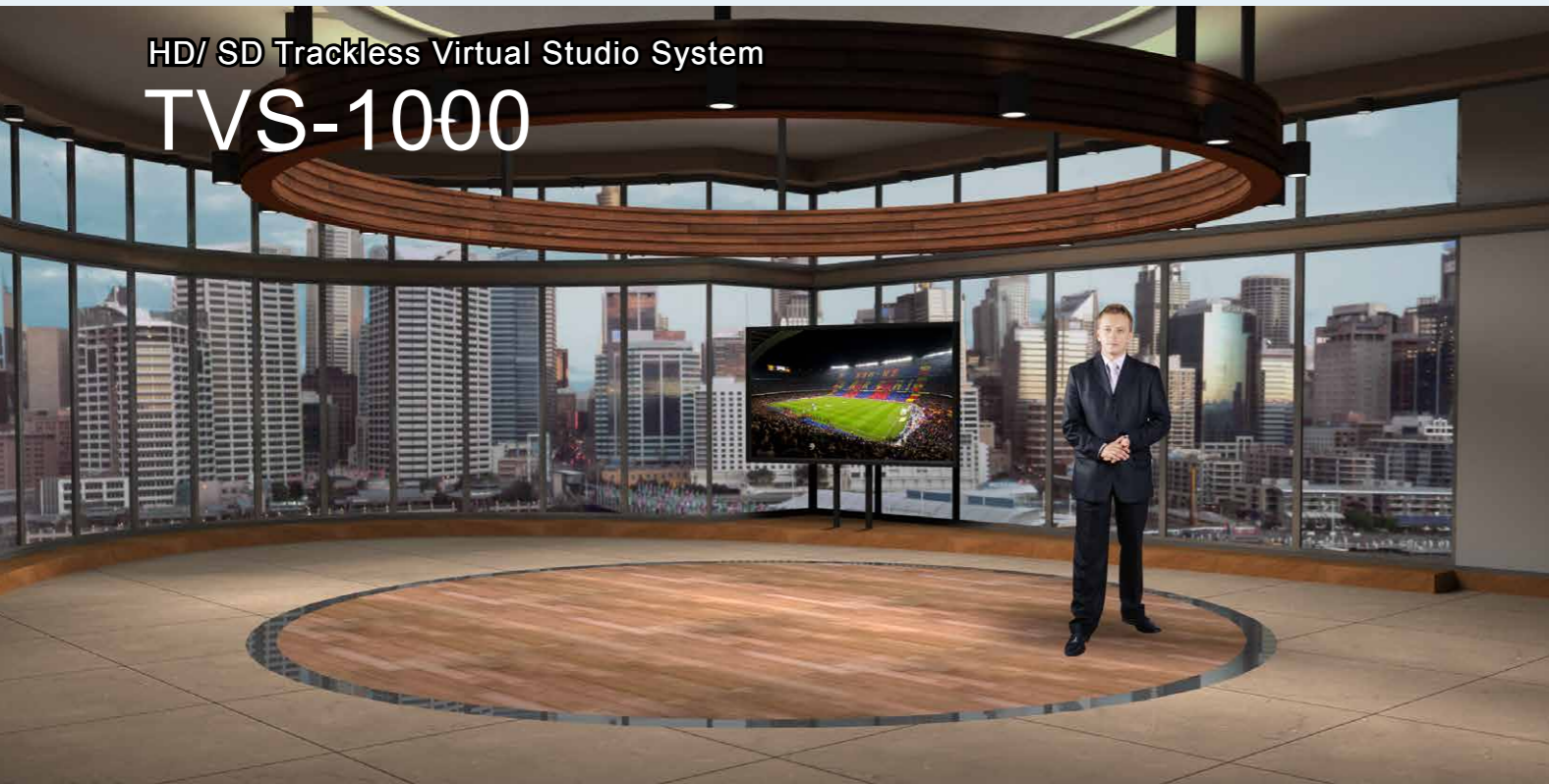
Datavideo CKL-300 is a combination of a dual color (green & blue) LED ring, light controller and a unique 3 x 0.9m (w) x 2.5m (h) retro-reflective backdrop cloth, which is embedded with tiny glass beads. The LED light ring is mounted on the lens of the camera, and projects a highly directional green or blue light on the backdrop cloth. Thanks to the reflective beads, light is then projected back to the camera creating a perfect green or blue background, providing you with excellent keying results with minimal effort.

- Light ring lens size 72 mm (stepping rings 52-82mm available from resellers)

Model	DVK-300HD	DVK-200
Video Standard	3G/HD/SD	SD
Video Format	1080p (25/30/50/59.94/60 Hz) 1080i (50/59.94/60 Hz) 720p (50/59.94/60 Hz) 480i (NTSC), 576i (PAL) Autodetect	480i (NTSC), 576i (PAL) selectable
Foreground Inputs	1x 3G/HD/SD-SDI 1x HDMI (1.4)	1x Composite Video 1x Y/C (S-Video) 1x YUV (Component) 1x DVI-I
Background Inputs	1x 3G/HD/SD-SDI 1x DVI-I	1x Y/C (S-Video) 1x Composite Video
Loop Through Output	N/A 2x 3G/HD/SD-SDI 1x HDMI	CV, YUV & Y/C only 2x Composite Video 1x Y/C (S-Video)
Keying Options	Chromakey Green / Blue, Lumakey	Chromakey Green / Blue, Lumakey
Key Mask/ Spill Correction/ Edge Correction	Yes	Yes
Color Processor	Foreground: Brightness, Contrast, Saturation, Ambient Intensity	Foreground & Background: Brightness, Contrast, Saturation, Tint
Noise Reduction	Yes	N/A
User Preset	4	2
GPI In/Out	N/A	Yes
Controlled Via	Ethernet, RS-232	Front Panel, RS-232
Chassis	1RU 19" Rack-mount Design	2RU 1/2 Rack Design

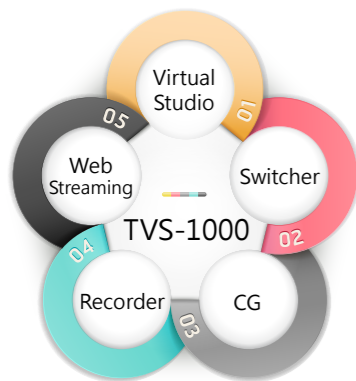
HD/ SD Trackless Virtual Studio System

TVS-1000



The TVS-1000 is a 5 in 1 design which consists of trackless virtual studio system, video switcher, character generator, video recorder and web streaming encoder. It's a versatile, easy to use and cost-effective solution. TVS-1000 is suitable for production companies, corporate producers, users in education, small studios and TV stations.

As a virtual studio solution, TVS-1000 supports pan, tilt and zoom camera movements for dynamic effect. The built-in Virtual Set Maker allows users to fully customize their sets: background images can be inserted with ease, logos can be added to any surface and video can be run in the backdrop. In addition, professional studio templates can be downloaded on <http://www.datavideovirtualset.com>



- Five in One: Virtual Studio, Switcher, Charter Generator, HD/SD recorder and Web Streaming
- Use just one HDMI input: four virtual studio angles), each angle supports 3 phases (pan, tilt, zoom type movements)
- Mini phone jack audio input, audio embedded to PGM HDMI output.
- 2 x DSK to add CG and animation to the scene
- Edit the background: add graphics or videos in the background.
- Chroma Key function delivers perfect keying
- 30 free set virtual set backgrounds are included
- Free TVS-1000 control panel (RMC-220) is included
- Virtual set maker is included. Easy to create your own style virtual set

Applications

TV Station



School



Personal Studio



Functions



Virtual Set Maker

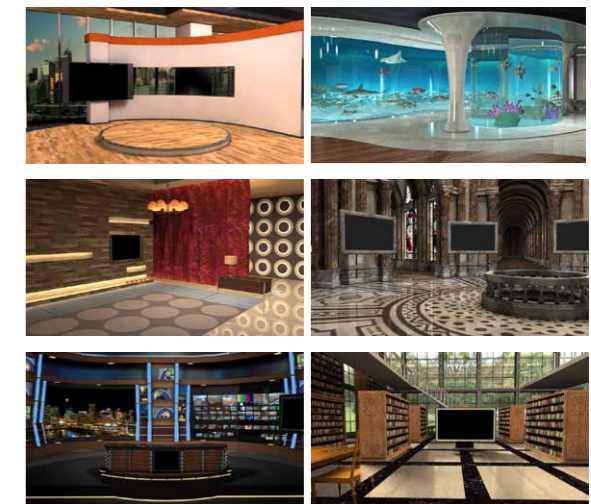


datavideovirtualset.com

Download professional professional virtual set backgrounds from the datavideovirtualset.com



30 virtual set backgrounds Included with TVS-1000



TVS-1000 Control Panel RMC-220

Special designed for virtual programs, makes the operation simpler and easier.



Specification

- Video Input: HDMI x 1
- Video Output: HDMI x 1
- Video Input Format: -1080 30P/29.97P/25P -1080 60i/59.94i/50i -720 50P/59.94P
- Audio Input: Mini Phone Jack x 1
- Downstream Key: 2
- Media: 2 (DDR)
- Virtual Studio: 30 sets
- Still Picture: 2
- Still Text: 2
- Keyer: Chromakey/ Luminance key
- Recording: H.264/ MPEG 2
- Live Streaming: Adobe Flash media/ Ustream/ Livestream
- Hard Disk Capacity: 1TB

Sampling Vector Scope Monitor VSM-100



Accurate video signal analysis and calibration has always been crucial to any live production.

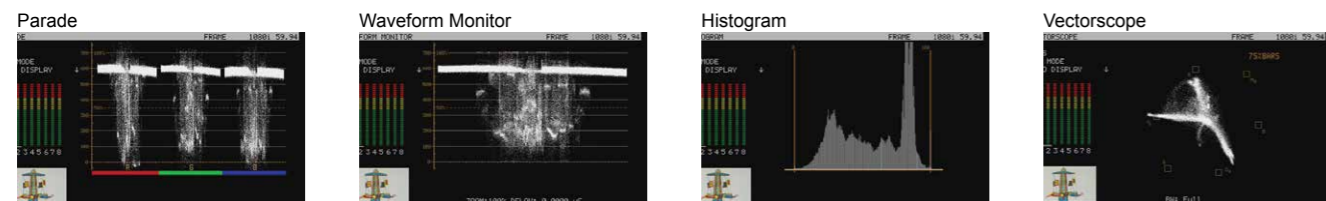
Datavideo VSM-100 and VSM-200 waveform / vectorscope monitor series seamlessly integrate into a compact 19 rack system to ensure consistent and legal color and luminance video levels. At 2RU, they are perfect for use in a production van or any space-limited setup.

VSM-100 has a single waveform / vectorscope unit while VSM-200 features dual scopes. Both models come with two LCD screens, thus no external monitors are required; as such it's highly cost effective.

- VSM-100: one waveform / vectorscope unit with two 4.3-inch HD monitor screens
- VSM-200: two waveform / vectorscope unit with two 4.3-inch HD monitor screens
- Sampling Vectorscope
- HD/SD-SDI input
- HDMI and HD/SD-SDI output, SDI output can be assigned as video source loop out or vectorscope display

- Auto-detect NTSC, PAL and HD signals
- Support four analysis modes: Waveform, Vectorscope, Parade (YCrCb & RGB) and Histogram
- Save and Recall traces for easy comparison of different video signals
- Video input thumbnail with selectable 16:9/4:3 aspect ratio
- Vectorscope reticle can be toggled between 75% and 100%
- Waveform detail can be zoomed 20%, 40%, 60% and 100% - Adjusting Horizontal Delay to view parts of the waveform
- Support embedded audio with on-screen audio level meter for up to 8 selecteable channels
- Monitor screens
- Each monitor has one HDMI and one HD/SD-SDI input with loophrough output
- Auto-detect NTSC, PAL and HD input signal
- Individual adjustments of Brightness, Contrast, Color Saturation and Back Light Level for each monitor
- Support Blue Only function, Safe area marking and Timecode display
- Support embedded audio on SDI, HDMI
- Audio monitoring via on-screen audio level indicator and front panel headphone jacks
- 4:3 & 16:9 display mode switching
- Standard 19-inch rack size, 2RU height, easy for system integration

	VS-100	VS-150	VSM-100	VSM-200
	Waveform/ Vector Scope	Waveform/ Vector Scope	Waveform/ Vector Scope	Waveform/ Vector Scope
Video Inputs	1x HD/SD-SDI	1x HD/SD-SDI	1x HD/SD-SDI	2x HD/SD-SDI
Video Outputs	1x HDMI	1x HDMI	1x HD/SD-SDI	2x HD/SD-SDI
Loop Through	1x HD/SD-SDI	1x HD/SD-SDI	N/A	N/A
Audio Inputs	Embedded Audio through SDI interface			
Audio Outputs	1x 2-Channel 1/8 Jack (Monitor any 2 of 8 audio channels.)			
Input Resolutions	1080i (50, 59.97, 60Hz), 1080p (24, 25, 30Hz), 720p (25, 29.97, 30, 50, 59.97, 60Hz), 576i, 480i			
Additional I/O			<ul style="list-style-type: none"> • Screen #1: 1x HDMI Input • Screen #2: 1x HDMI Input • VS/WFM: 1x HDMI Output 	<ul style="list-style-type: none"> • Screen #1: 1x HDMI Input • Screen #2: 1x HDMI Input • VS/WFM #1: 1x HDMI Out • VS/WFM #2: 1x HDMI Out



Audio Delay Box with Level Adjustment AD-200



There are few audio mixers available for video professionals. Datavideo offers a solution - AD-200. This 2-piece audio system has a rack-mount design for installation in an OB Van or PPU. AD-200 combines audio mixer, level adjustment and audio delay box. The matrix-type audio mapping function allows a combination of multiple audio input channels into one or more output channels. Up to 3 second audio delay is available to synchronize audio with video. AD-200 is user-friendly, supporting 2 audio inputs for microphone or line input and its clear OLED display makes it easy to use.

2-CH Audio Noise Isolator DAC-80



DAC-80 is designed to remove hum and buzz created by ground loops. Voltage differences between different pieces of equipment cause small AC power currents to flow within the shield of audio cables. Capacitance issues can also introduce small current flows within the cable shield. Both problems will create hum in audio signals. DAC-80 delivers the clean audio signal you need, yet remains transparent within the production chain.

Audio Mixer AM-100

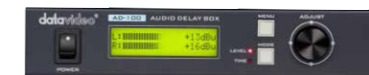


AM-100 is a 1RU 5-channel mixer designed for live video and TV environments. Channel 1 to 4 are designed for microphone or line inputs. The 5th channel is for secondary AUX XLR inputs. AM-100 supports audio-follow-video switching. It is ideal for integration with a Datavideo video switcher.

- Ultra-compact 4 input + 2 AUX mixer featuring low noise, high-headroom design
- Four studio-grade Dynamic Range mic preamps with:
 - 1.Ultra -wide 60dB gain range
 - 2.130dB dynamic range
 - 3.+22dBu line input handling
 - 4.Extended low-frequency response
 - 5.Distortion under 0.0007% (20Hz~20KHz)

- 6.Phantom power for studio condenser mics
- Six high-headroom line inputs
- High resolution 8 segment stereo meters
- Ear phone 6.3mm with knob x1
- Tally In (D-Sub)
- Level indicator
- A+V switch

Audio Delay Box AD-100



AD-100 is an easy to use audio delay box, enabling synchronisation of audio and video. The unit features RCA (phono) connector as well as XLR type connection. Built in a rugged metal housing for use in the field or studio.

- RCA (phono) connector as well as XLR type connection.
- Built in a rugged metal housing for use in the field or studio setup
- Low power consumption

Balanced/ Unbalanced Audio Converter BAC-03



- Stereo Balanced Audio In / Out via XLR Sockets
- Stereo Unbalanced Audio In / Out via Phono Sockets
- Robust Metal Construction
- Supplied c/w Power Adapter

Camera Power Center

PD-6

PD-2A 400 watts 1RU 19 rack Power Distribution Center provides a steady power supply for studio equipment, such as the video switcher, monitors, recorders and intercom system. It features auto-switchable inputs of AC 110V/220, a UPS interface and DC 12V ports. PD-2A has 4 12V/3A terminals, two 12V/5A terminals, two 12V/10A terminals (shared) and XLR DC outputs. It provides up to 400 Watt. The PD-2A adds reliability to studio equipment and consolidates power supplies and cabling. Datavideo PD-4A Power Distribution Center comes with two AC power supplies to provide instant fail-over redundancy. PD-4A provides multiple DC 12V outputs. The automatic port control sequencer intelligently initiates each output to ensure the power supply on start-up.



The PD-4A can also be powered from a regulated DC 12V power source. It can run from a car or van's power outlet with the use of a suitable regulator. PD-6 is a 19 rack mountable universal AC to DC Power Distribution Center, designed to supply steady and sequenced voltage for production kit whilst on location or in your studio. Perfect for use in conjunction with Datavideo studio equipment and the CB-22H / CB-23H via a single power cable. Each of the eight outputs can be configured individually, DC48V, 24V, 14.4V & 12V, with a total power consumption of 360W.

	PD-2A	PD-4A	PD-6
Product Name	Studio Power Distributor	Redundant Power Centertributor	Camera Power Distributor
AC Input	• 100~240 VAC (50Hz or 60Hz) • AC input outlet: One AC input with Power Switch	• 100~240 VAC (50Hz or 60Hz) • AC input outlet: Two AC inputs & Two Power Switches	• 100~240 VAC (50Hz or 60Hz) • AC input outlet: One AC input with Power Switch
DC Backup Input	• One DC 12V/32A, • supports non-regulated DC 12V output	• One DC 12V/25A, • supports non-regulated DC 12V output	N/A
DC Outputs	8 12V±5%, 3A XLR DC Female Jack x 4 12V±5%, 5A XLR DC Female Jack x 2 12V±5%, 10A XLR DC Female Jack x 2	5 12V±5%, 5A XLR DC Female Jack x 4 12V±5%, 10A XLR DC Female Jack x 1	8(x4 30W,x4 60W) 30W:12V(2.5A),14.4V(2A),24V(1.25A),48V(0.6A) 60W:12V(5A),14.4V(4A),24V(2.5A),48V(1.25A) PIN1:GND PIN2:DC OUT PIN3/4:NC
Max. Power Rating	400W	360W	360W
DC Overload	DC overload protection, auto-recovery fuses on each DC output terminal	DC overload protection, auto-recovery fuses on each DC output terminal	Protection type: Recovery automatically after fault condition is removed
AC Overload	non-recovery fuse on the AC input outlet	non-recovery fuse on the AC input outlet	non-recovery fuse on the AC input outlet
LED Indicator	8 DC output LED indicators	Green LED: Unit under working condition Red twinkle: AC Input failed 1~4 XLR DC outputs LED indicator	LED Color Indicator: Red:48V, Weak Red:24V, Green:14.4V, Blue:12V
Power source Input	Selectable of Auto/AC input switch Select AUTO/AC	Selectable of Auto/AC input switch	N/A

DC to DC 12/7.2V 4A Converter

DDC-4012H

When a camcorder connects to external power. Datavideo DDC-4012H DC to DC converter can convert DC 15V~50V to 7.2V / 8.4V / 12V power output. The stable power can protect camera equipment.

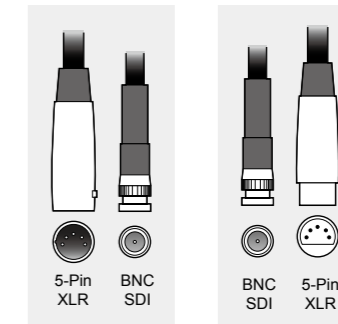
- Aluminium housing
- DC12V +/- 3%
- Velcro for mount on tripod



INPUT	VOLTAGE RANGE	15V~50V DC
	EFFICIENCY(Typ.)	UP TO 85%
OUTPUT	DC VOLTAGE	7.2V / 8.4V / 12V
	VOLTAGE TOLERANCE	±3%
	RATED CURRENT	4 A
	CURRENT RANGE	0~4 A
	RATED POWER	48W
	RIPPLE & NOISE(max)	<400mV
PROTECTION	OVER LOAD	105%~150% rated output power Protection type: Recovery automatically after fault condition is removed
CONNECTOR	DC INPUT 4PIN XLR MALE	PIN1:GND , PIN2/3:NC , PIN4:DC IN
	DC OUTPUT 4PIN XLR FEMALE	PIN1:GND , PIN4:NC, PIN2:DC IN
	DC OUTPUT 5.5mm DC Jack	Center: DC OUT , Shell: GND
ENVIRONMENT	WORKING TEMP	0°C to 40°C (32°F to 102°F)
	WORKING HUMIDITY	10% to 90% (non condensing)
	STORAGE TEMP:HUMIDY	-40°C to +85°C, 10~95% RH
OTHERS	DIMENSION	115 mm x 50 mm x 35 mm (L x W x H)
	WEIGHT	Approx. 0.3 kg/ 0.66 lbs
	CABLE	UL 2464 ,18AWG, L=1M
	SLIDE SWITCH	Selected 7.2V or 12V output
	LED Lamp	RED:DC out 12V, Green: DC out 7.2V

HD/SD 30m/50m/100m All In One Cable w/o Power

CB-46/ 47/ 48



Model	CB-22H/ 23H	CB-30/ 31/ 38	CB-46/ 47/ 48
Interface	- 1 x 4-pin XLR power cable - 1 x 5-pin XLR ITC/Tally cable - 1 x 75Ω BNC for HD/SD SDI video - 1 x 75Ω BNC for CV return video	- 1 x 5-pin XLR ITC/Tally cable - 1 x 75Ω BNC for HD/SD SDI video - 1 x 75Ω BNC for CV return video - 1 x CAT-5 cable for Camera control	- 1 x 75Ω BNC for HD/SD SDI video - 1 x 5-pin XLR ITC/Tally cable
Length	CB-22H: 30m CB-23H: 50m	CB-30: 30m CB-31: 50m CB-38: 40m (cascadable to 80m)	CB-46: 30m CB-47: 50m CB-48: 100m
Repeater	VP-605H	VP-633 and VP-634	VP-633 and VP-634
Applications	- Intercom & Tally - DC Power 12~48V - Video (including HD-SDI) - Return video for Look Back monitor - Datavideo OBV or Mobile Studio	- EFP Multi-camera Operation - Mobile Video Studio	- Intercom & Tally - Video (including HD-SDI) - Range of Datavideo Mobile Studio

100m SDI Repeater (Powered)

VP-633



100m SDI Repeater (Unpowered)

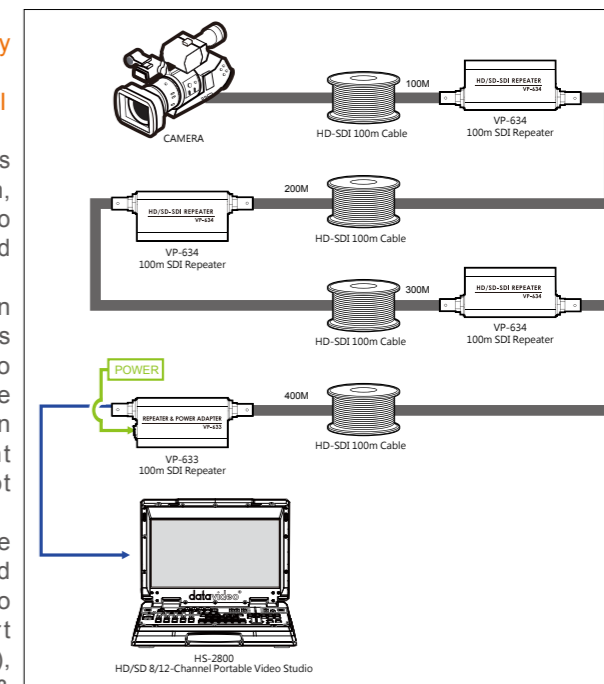
VP-634



VP-633/VP-634 SDI repeaters can significantly extend the maximum cable run of standard SDI cabling.

Up-to 4 SDI repeaters can be used in one chain, allowing runs of up to 1000m SDI video thru good quality SDI cable.

Each run must contain a VP-633 as this has a power connection to supply power through the SDI cables which then powers the subsequent VP-634's (which do not require additional power). For applications where runs of a few hundred meters HD-SDI video are required (concert hall, sports stadium etc.), the Datavideo VP-633 & VP-634 are a very cost effective solution.



All In One Cable Extender

VP-605H

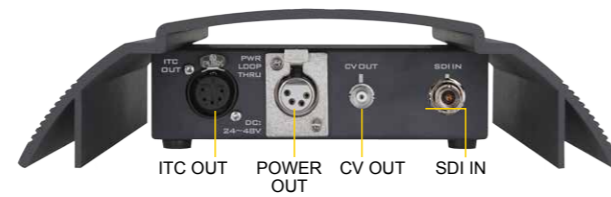
Create SDI cable runs up to 200m

The all in one signal repeater with composite video, power and intercom connections



FRONT VIEW

REAR VIEW



Composite Signal Repeater

VP-737

VP-737 is a simple design of composite video signal repeater which separate into two units, one is installed near the video signal source for transmission, the other to be placed near the display as a receiver.

VP-737 is able to extend composite video source signal up to 200 meters away over Cat5e (or better) cable. With no software configuration requirements, the installation and setup is quick and hassle-free.

- Wired composite video transmission as far as 200 meters
- Completely adaptive - quick, easy installation and setup, no configuration required
- Cat5e extension design make use of existing Cat 5e or better wiring infrastructure



Model	VP-605H	VP-633/634	VP-737
Video and Signal	Input: HD/SD-SDI · CV · Talkback, Tally, DC in Output: HD/SD-SDI · CV · Talkback, Tally, DC out	Input: HD-SDI/SD-SDI Output: HD-SDI/SD-SDI	Transmitter - CV Input (BNC) - DC Input - CAT 5 Output (RJ-45) Receiver - CV Output (BNC) - CAT 5 Input (RJ-45)
Standard	SD: SMPTE 259M HD: SMPTE 292M	SD: SMPTE 259M HD: SMPTE 292M	SD: SMPTE 259M
Video Format	SD : 720x480i · 720x576i HD : 1280x720 50P / 59.94P / 60P 1920x1080 50i / 59.94i / 60i 1920x1080 24P / 25P / 30P	SD : 720x480i · 720x576i HD : 1280x720 50P / 59.94P / 60P 1920x1080 50i / 59.94i / 60i 1920x1080 24P / 25P / 30P	625i PAL, 525i NTSC
Audio	SDI Embedded Audio	SDI Embedded Audio	N/A
Power	DC 12V ~ 25V	DC 12V ~ 25V	DC 12V

datavideo®

Sharing the Value

DATAVIDEO WORLDWIDE OFFICES

Datavideo Technologies Europe BV
Floridadreef 106
3565 AM Utrecht,
The Netherlands
Tel: +31-30-261-96-56
Fax: +31-30-261-96-57
E-mail: info@datavideo.nl

Datavideo UK Limited
Units 1 & 2 Waterside Business Park
Hadfield, Glossop, Derbyshire
SK13 1BE, UK
Tel: +44-1457 851 000
Fax: +44-1457 850 964
E-mail: sales@datavideo.co.uk

Datavideo France s.a.r.l.
Cité Descartes 1, rue Albert Einstein
Champs sur Marne 774477 –
Marne la Vallée cedex 2
Tel: +33-1-60370246
Fax: +33-1-60376732
E-mail: info@datavideo.fr

Datavideo Corporation
7048 Elmer Avenue.
Whittier, CA 90602,
U.S.A.
Tel: +1-562-696 2324
Fax: +1-562-698 6930
E-mail: sales@datavideo.us

Datavideo Technologies Co. Ltd
10F. No. 176, Jian 1st Rd., Chung Ho
District, New Taipei City 235, Taiwan,
R.O.C.
Tel: +886-2-8227-2888
Fax: +886-2-8227-2777
E-mail: service@datavideo.com.tw

Datavideo Hong Kong Ltd
G/F., 26 Cross Lane
Wanchai, Hong Kong
Tel: +852-2833-1981
Fax: +852-2833-9916
E-mail: info@datavideo.com.hk

Datavideo Technologies China Co **Shanghai**
101, NO. 618, LiuYing Rd, Zabei District,
Shanghai, China
Tel: +86 21-5603 6599
Fax: +86 21-5603 6770
E-mail: service@datavideo.cn

Datavideo Technologies China Co **Beijing**
B-1107 Zhuhang 2000 building
100#Balizhuang xili Chaoyang District
Beijing PR China
Tel: +86 10-8586 9034
Fax: +86 10-8586 9074
E-mail: service@datavideo.cn

Datavideo Technologies China Co **Chengdu**
B-823, Meinian square, No. 1388, Middle of
Tianfu Avenue, Gaoxin District,
Chengdu, Sichuan
Tel: +86 28-8613 7786
Fax: +86 21-8513 6486
E-mail: service@datavideo.cn

Datavideo Technologies China Co **Fuzhou**
A1-2405 Room, No. 8, Aojiang Road,
Taijiang District, Fuzhou, Fujian, China
Tel: 0591-83211756 · 0591-83210187
Fax: 0591-83211262
E-mail: service@datavideo.cn

Datavideo Technologies China Co **Chongqing**
11-2 Room, Nanfangxingkong,
No. 1, Keyuansan Road,
Gaoxin District, Chongqing, China
Tel: 023-88119618
Fax: 023-88119619
E-mail: service@datavideo.cn

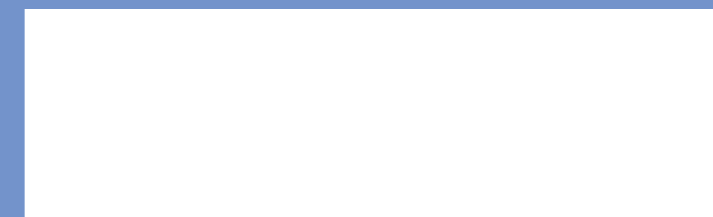
Datavideo Technologies (S) PTE Ltd
No. 178 Paya Lebar Road #06-03
Singapore 409030
Tel: +65-6749 6866
Fax: +65-6749 3266
E-mail: sales@datavideo.sg

Datavideo India Noida
A-132, Sec-63, Noida-201307,
India
Tel: +91-0120-2427337
Fax: +91-0120-2427338
E-mail: sales@datavideo.in

Datavideo India Kochi
1st Floor, Chicago Plaza, Rajaji Road,
Off MG-Road, Kochi 682035, India
Tel: +91 4844-025336
Fax: +91 4844-047696
E-mail: sales@datavideo.in

Datavideo Visual Technology(s) Pte Ltd
No. 178 Paya Lebar Road #06-07
Singapore 409030
Tel: +65-6749 6866
Fax: +65-6749 3266
E-mail: info@datavideovirtualset.com

Datavideo Distributor / Reseller:



www.datavideo.com