

HD2SDI BOX

User Manual



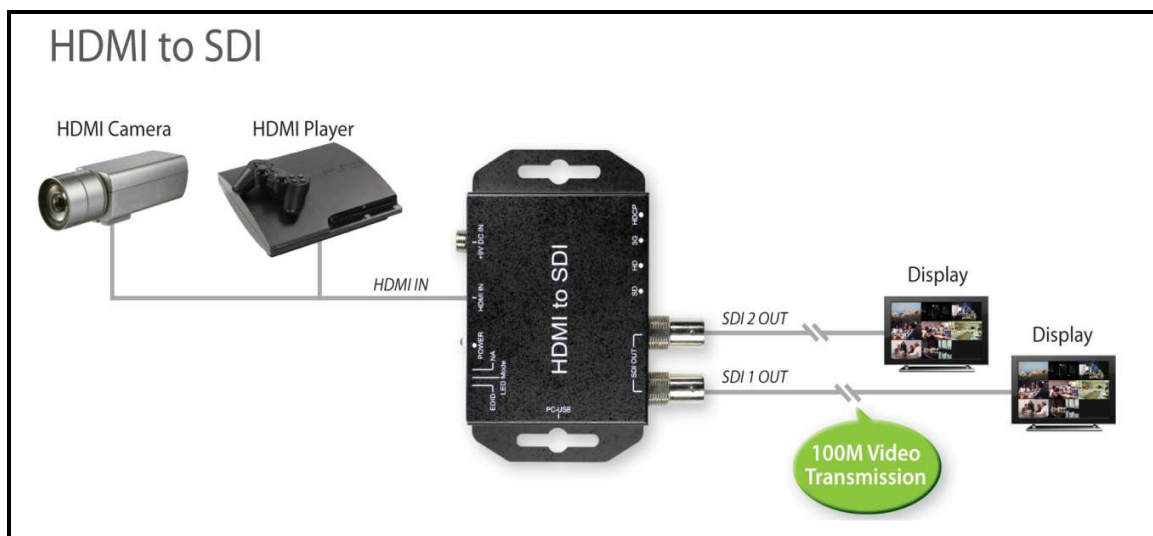
Rev1.0

Index

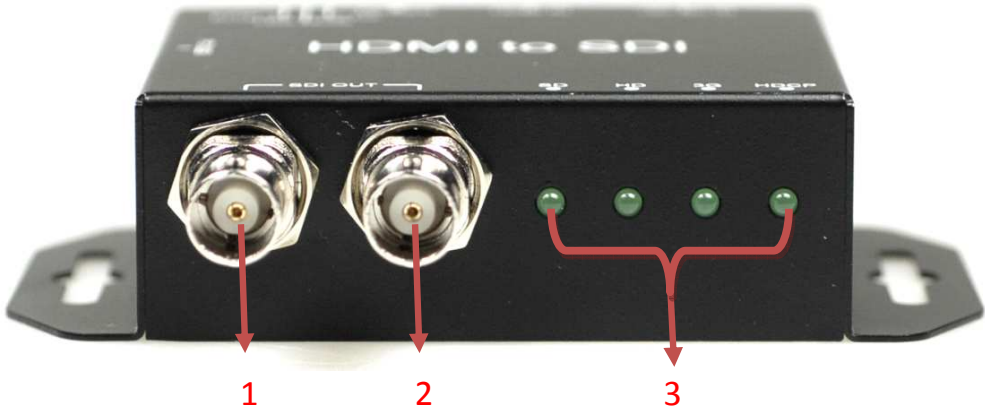
Feature	3
Front Panel.....	4
Rear Panel.....	4
Dip Switch.....	5
EDID Learning	6
Specifications.....	7
Firmware Upload.....	8

Feature

- Supports HD formats:
 - 720p50 & 60
 - 1080i50 & 60
 - 1080p24, 25, 30, 50 & 60
- Support 525i & 625i SD D1 format
- Support up to 2ch of audio output
- Auto 3G/HD/SD-SDI detection
- HDMI 1.3 supported
- SDI compliant outputs
- External DIP Switch Configuration
- Firmware is upgradable in the field using the integrated USB port
- The converter is Plug-and-Play

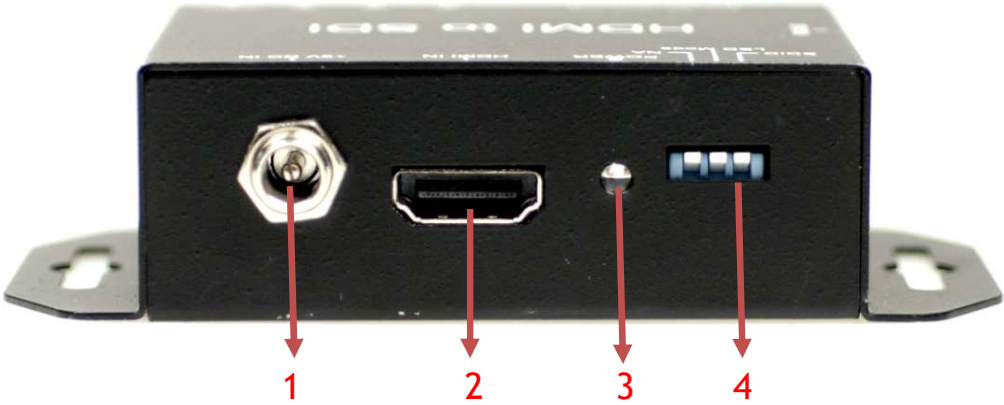


Front Panel

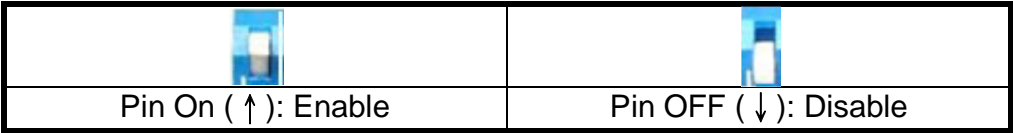


- 1. 3G/HD/SD-SDI Output 1
- 2. 3G/HD/SD-SDI Output 2
- 3. 3G/HD/SD/HDCP LED indicator

Rear Panel



- 1. Power (+6V ~ + 15V)
- 2. HDMI Input
- 3. Power LED indicator
- 4. Dip Switch:



- a. EDID
- b. LED Mode
- c. NA

Dip Switch

- EDID:
 In order to keep the compatibility of HDMI to most monitors, HD2SDI features EDID learning ability.
 Pin On (↑): Default EDID
 Pin OFF (↓): Leaning EDID

- LED Mode:
 Pin OFF (↓):

Resolution	SD LED	HD LED	3G LED	HDCP LED
720 x 480 i (NTSC)	○	○	○	●
720 x 576 i (PAL)	○	○	●	○
1280 x 720 p50	○	○	●	●
1280 x 720 p60	○	●	○	○
1920 x 1080 i50	○	●	○	●
1920 x 1080 i60	○	●	●	○
1920 x 1080 p24	○	●	●	●
1920 x 1080 p25	●	○	○	○
1920 x 1080 p30	●	○	○	●
1920 x 1080 p50	●	○	●	○
1920 x 1080 p60	●	○	●	●
Un-Support	●	●	●	●

- : LED ON
- : LED OFF

Pin On (↑)

Resolution	3G LED	HD LED	SD LED
NTSC / PAL	○	○	●
720p / 1080i / 1080 [24p, 30p]	○	●	○
1080 [50p,60p] / 2K	●	○	○

- : LED ON
- : LED OFF

- NA:

EDID Learning

1. Turn off HD2SDI Box and EDID pin is pull down.
2. Connect the TV monitor thru HDMI port to HD2SDI box, and then turn on HD2SDI box.
3. The LED of HD2SDI box will light, which indicates the EDID learning process is finished.

LED Sequence	SD LED	HD LED	3G LED	HDCP LED
Start ↓ Finish	○	○	○	●
	○	○	●	●
	○	●	●	●
	●	●	●	●
	○	○	○	○

● : LED ON

○ : LED OFF

4. Connect HD2SDI box to the HDMI source through a HDMI cable

Specifications

DESCRIPTION	
Support Video Resolution	SD – 720 x 480 i (NTSC) / 720 x 576 I (PAL) HD– 1280 x 720 p 1920 x 1080 50i/60i 1920 x 1080 24p/25p/30p 3G– 1920 x 1080 50p/60p 2K– 2048 x 1080 24p/30p
SDI format	SD-SDI(SMPTE 259M) HD-SDI(SMPTE 292M) 3G-SDI (SMPTE 424M / SMPTE 425M)
Audio Support	2 Channel
Audio Sample	Auto Ra-sample to 48Khz (For Stereo)
Coaxial Cable Type	RG6/RG59(75 Ω)
Cable Equalization	3G: 100m of RG6/ 86m of RG59 HD: 170m of RG6/ 120m of RG59 SD: 400m of RG6/ 280m of RG59 <i>*1 RG6: CANARE L-5CFB Cable / RG59: Belden 9275 Cable</i> <i>*2 Cable Length Performance: Depending on SDI Signal and Cable Quality</i>
Input	1 x HDMI
Output	2 x BNC [SDI]
BNC Connector	3G 75 Ω inter-locked socket
HDMI Connector	TYPE A [19-pin female]
DIP Switch	3-pin [EDID / LED mode / NA]
Housing	SECC
Dimension	L:104mm x W:63.3mm xH:26mm
Power Source	Power Adapter: AC 100 ~ 240 V/DC (+6 ~ 15 V)
Operation Temperature	0~50°C [32~114°F]
Storage Temperature	-20~+60°C

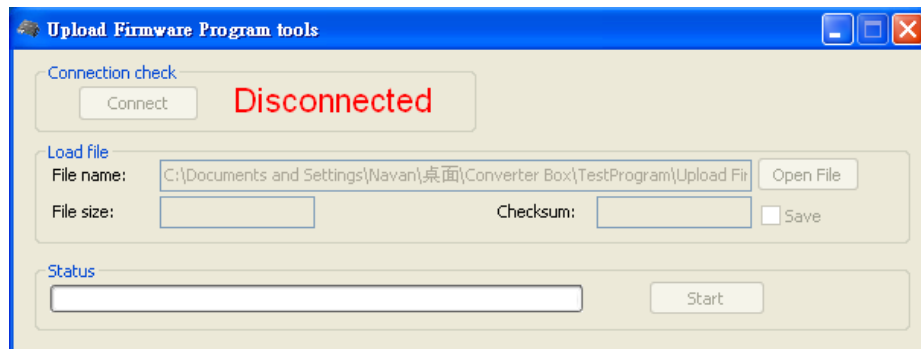
Firmware Upload

- Firmware is upgradable in the field using the integrated USB port

How to Firmware upgrade:

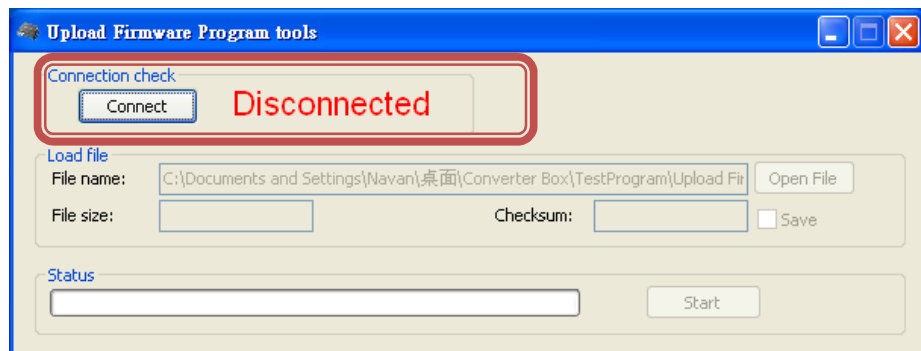
Step 1.

Open Upload Firmware Program tools.exe and connect box to PC by USB Cable.



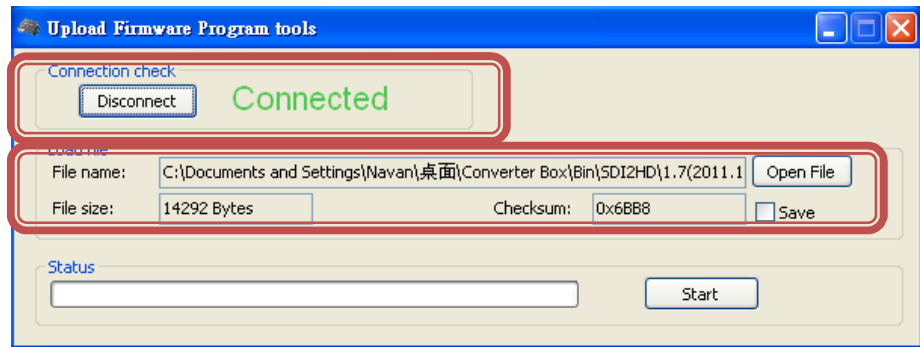
Step 2.

Plug and un-plug “DC adapter” to power on/off the converter box (the connection check status will be changed to “Connect”)



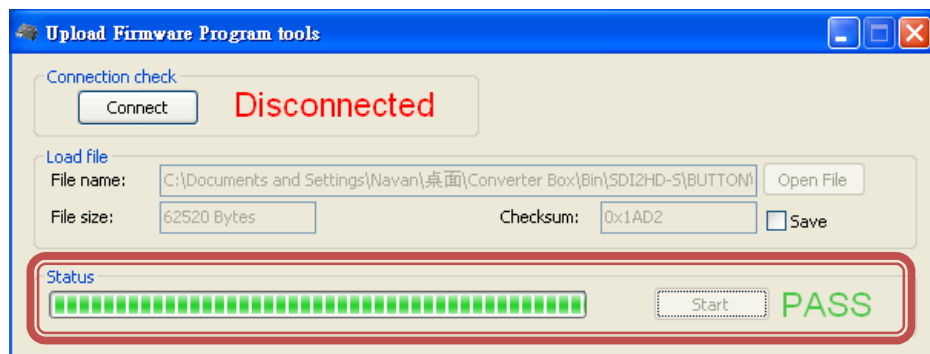
Step 3.

Plug and un-plug “DC adapter” again (the connection check status will be changed to “Connected”) and Please click the Open File button to select the firmware bin file.



Step 4.

Please click “Start’ Button to proceed with new firmware programming. The PASS message will appear when the procedures finished.



Step 5.

Close Upload Firmware Program tools

