

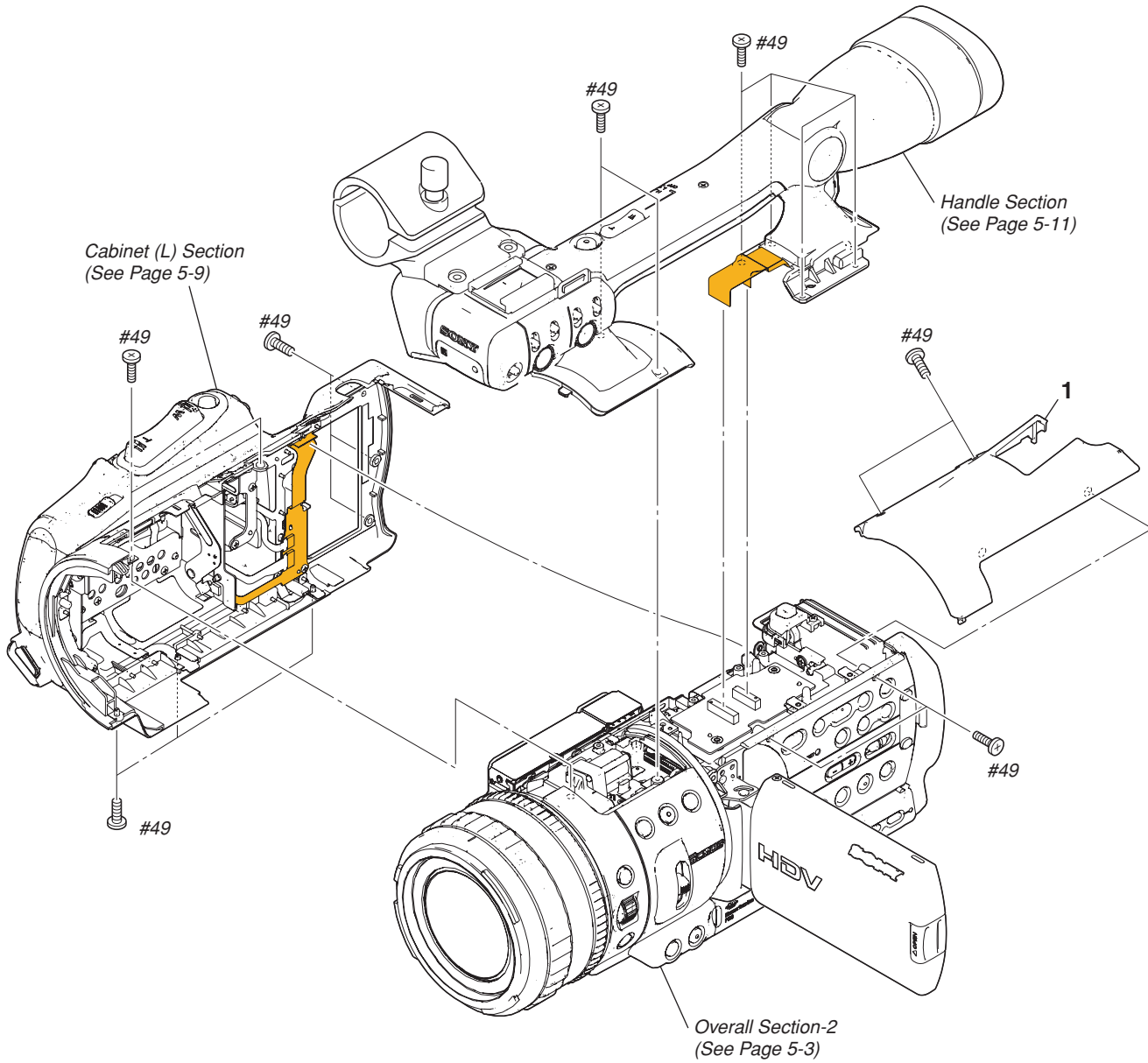
# 5. REPAIR PARTS LIST

## DISASSEMBLY

## HARDWARE LIST

### 5-1. EXPLODED VIEWS

#### 5-1-1. OVERALL SECTION-1



Ref. No.	Part No.	Description
1	2-891-978-11	CABINET, TOP

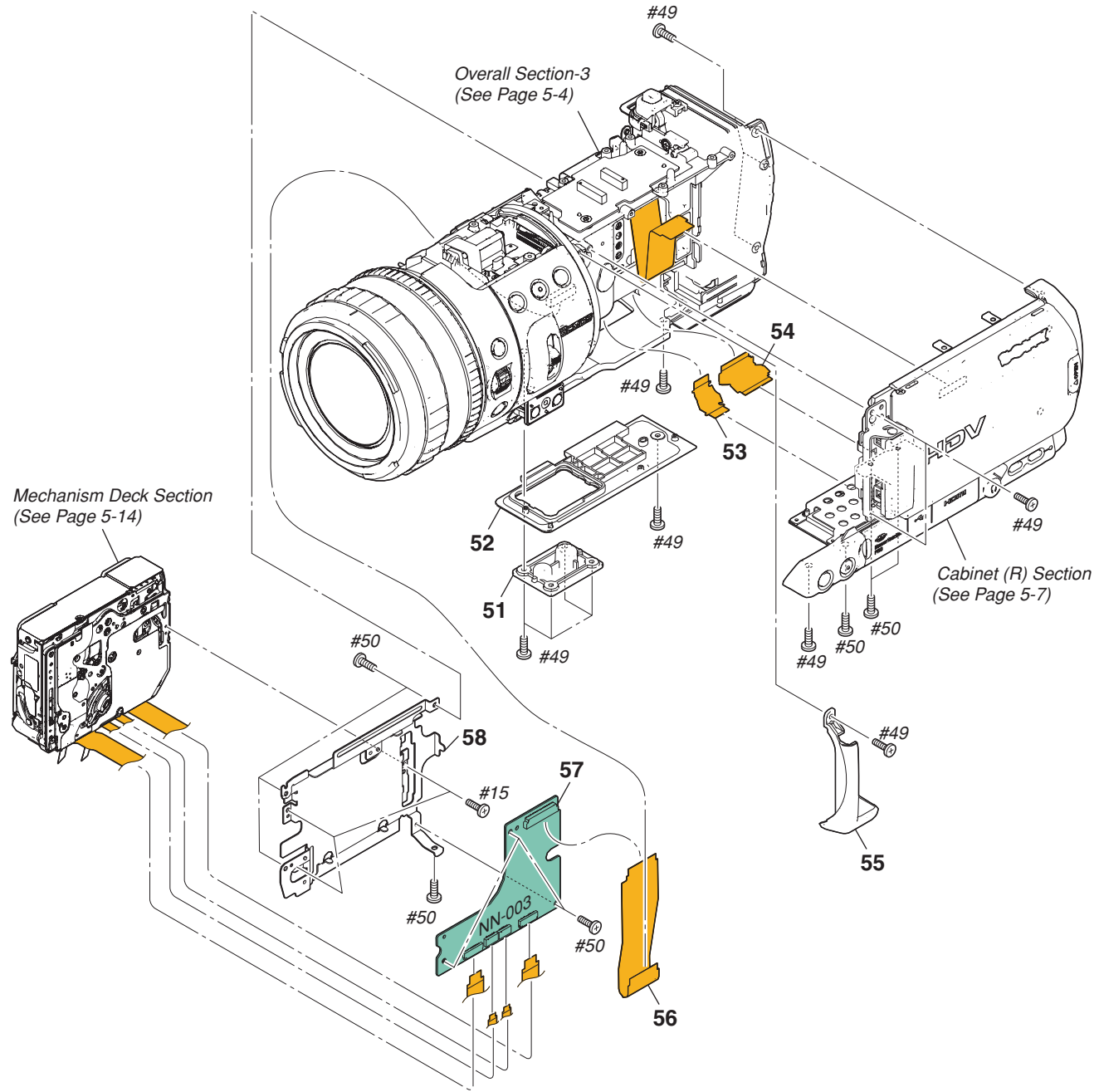
Ref. No.	Part No.	Description
#49	2-630-005-31	SCREW (M2), NEW TRUSTER, P2 (Black)

# 5. REPAIR PARTS LIST

## DISASSEMBLY

## HARDWARE LIST

### 5-1-2. OVERALL SECTION-2



Ref. No.	Part No.	Description	Ref. No.	Part No.	Description
51	2-178-793-01	BRACKET (TRIPOD)	57	A-1217-221-A	NN-003 BOARD, COMPLETE
52	2-891-980-01	PLATE, BOTTOM	* 58	X-2149-998-1	FRAME ASSY, MD
53	1-870-118-11	FP-496 FLEXIBLE BOARD	#15	3-062-214-01	SCREW (M1.4X1.5) (Silver)
54	1-870-115-11	FP-493 FLEXIBLE BOARD	#49	2-630-005-31	SCREW (M2), NEW TRUSTER, P2 (Black)
55	2-892-031-11	COVER (F), HINGE	#50	2-891-494-11	SCREW (M2), NEW TRUSTER, P2 (Red)
56	1-870-113-11	FP-491 FLEXIBLE BOARD			

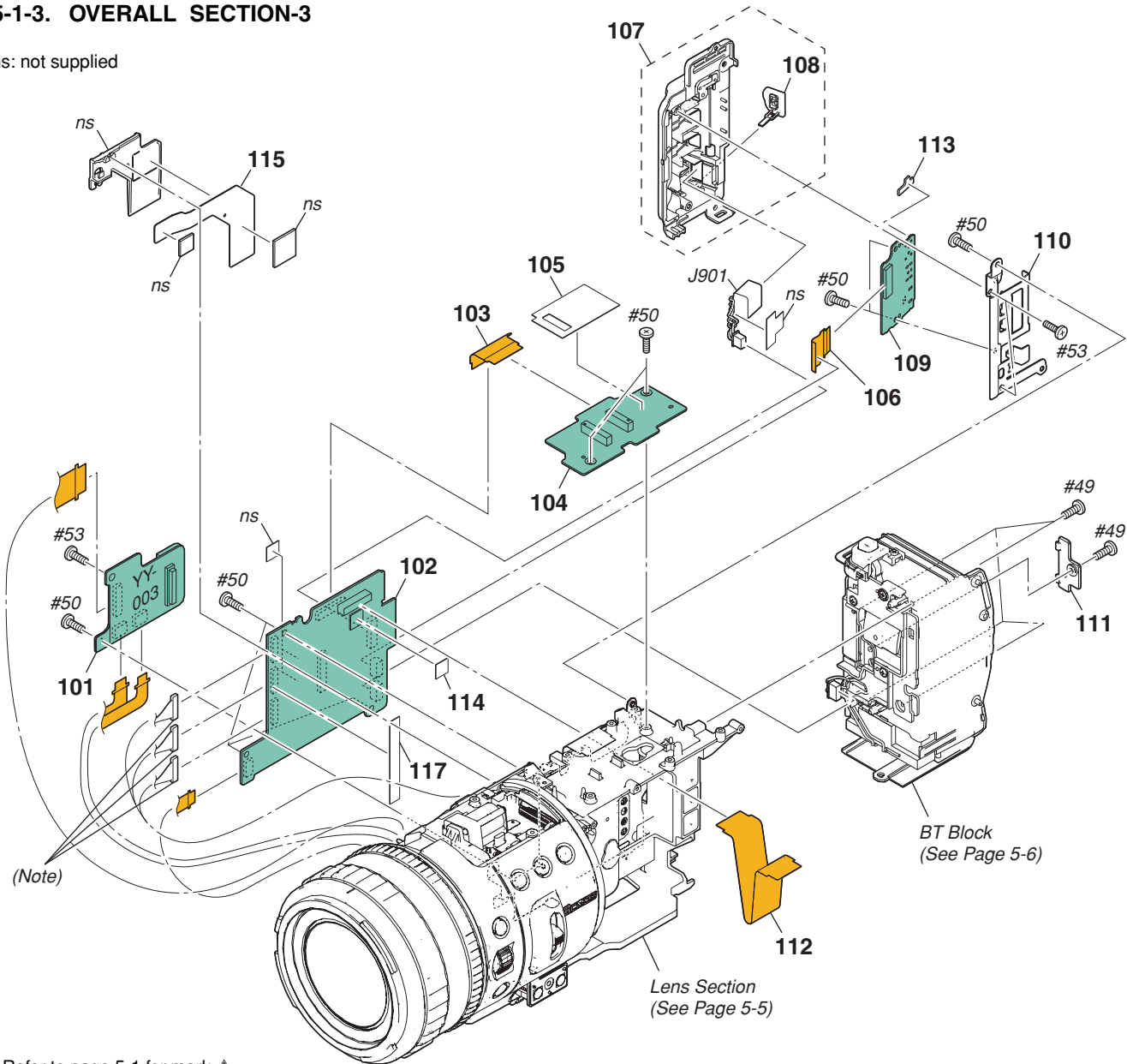
## 5. REPAIR PARTS LIST

### DISASSEMBLY

### HARDWARE LIST

### 5-1-3. OVERALL SECTION-3

ns: not supplied



• Refer to page 5-1 for mark  $\triangle$ .

Note: ハーネス (coaxial cable) を抜く時は2-1ページの“Note for disconnecting the harness (coaxial cable)”を参照してください。

Note: Refer to page 2-1 “Note for disconnecting the harness (coaxial cable)” when changing the harness (coaxial cable).

Ref. No.	Part No.	Description	Ref. No.	Part No.	Description
101	A-1217-225-A	YY-003 BOARD, COMPLETE	* 110	2-891-977-01	HOLDER, JACK PC BOARD (L)
102	A-1217-722-A	TT-003 BOARD, COMPLETE (SERVICE) (NTSC: V1J/V1U/V1N)	111	2-891-982-01	LID, CPC
102	A-1217-723-A	TT-003 BOARD, COMPLETE (SERVICE) (PAL: V1E/V1P/V1C)	112	1-870-116-11	FP-494 FLEXIBLE BOARD
103	1-870-114-11	FP-492 FLEXIBLE BOARD	* 113	2-891-983-01	CUSHION, LIGHT INTERCEPTION
104	A-1217-223-A	OO-003 BOARD, COMPLETE	* 114	2-891-990-01	SPACER (DZ)
* 105	2-896-054-01	SHEET (TP)	* 115	2-891-985-01	SHEET (GF)
106	1-870-117-11	FP-495 FLEXIBLE BOARD	* 117	2-899-567-01	SHEET (TT)
107	X-2149-995-1	CABINET (L) ASSY (D), JACK	$\triangle$ J901	1-815-005-11	CONNECTOR, DC-IN
108	2-891-959-01	DC, JACK LID	#49	2-630-005-31	SCREW (M2), NEW TRUSTER, P2 (Black)
109	A-1217-208-A	II-003 BOARD, COMPLETE	#50	2-891-494-11	SCREW (M2), NEW TRUSTER, P2 (Red)
			#53	3-080-206-21	SCREW, TAPPING, P2 (Black)

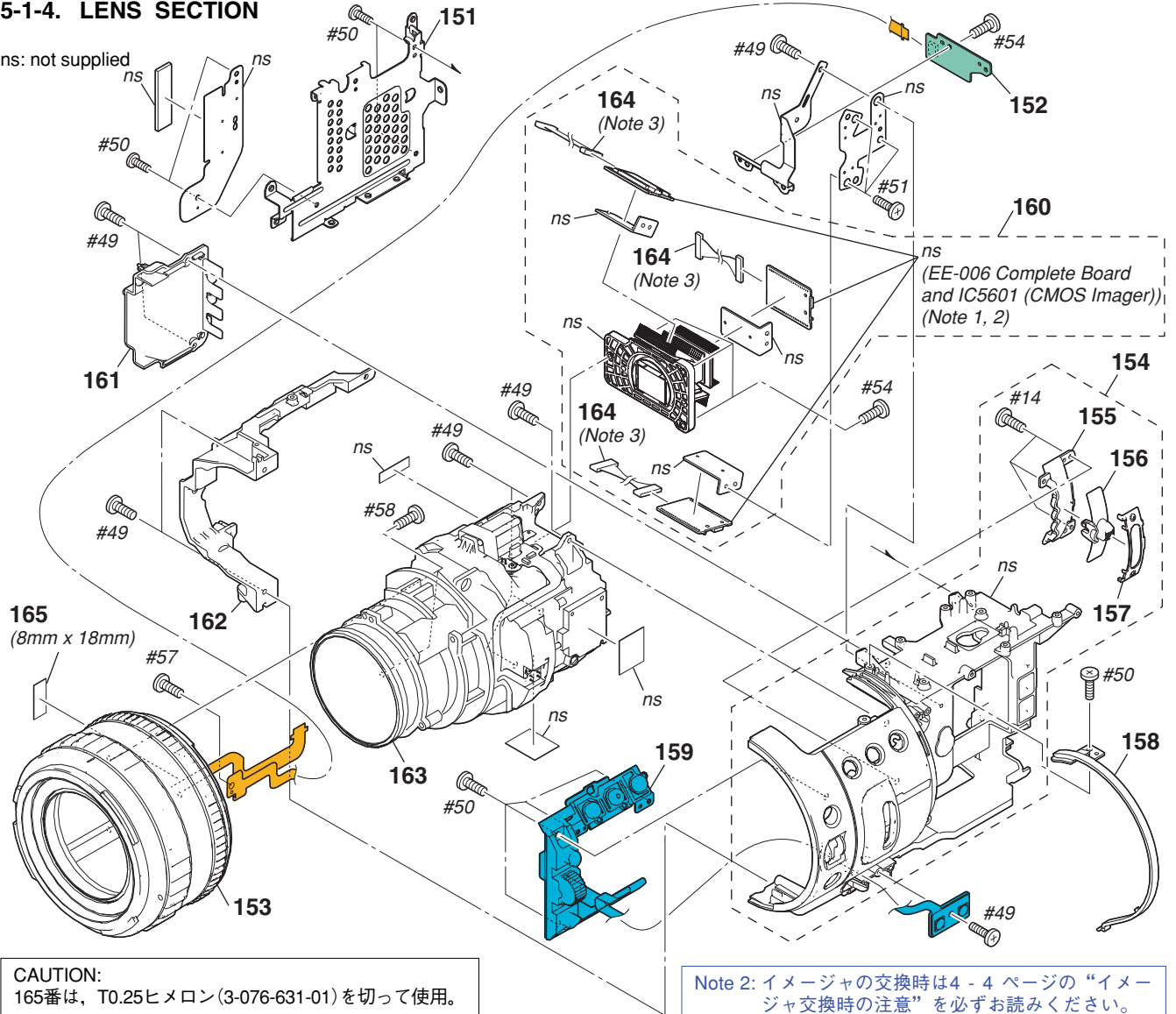
## 5. REPAIR PARTS LIST

### DISASSEMBLY

### HARDWARE LIST

#### 5-1-4. LENS SECTION

ns: not supplied



**CAUTION:**  
165番は、T0.25ヒメロン(3-076-631-01)を切って使用。

**CAUTION:**  
For the part of 165, cut WOVEN (T0.25), FABRIC NON (3-076-631-01) into the desired length and use it.

Note 1: マウント済EE-006基板とIC5601は交換対象ではありませんが、プリズム組立に含まれます。

Note 1: EE-006 complete board and IC5601 are not supplied, but they are included in prism assy.

Note 2: イメージャの交換時は4-4ページの“イメージャ交換時の注意”を必ずお読みください。

Note 2: Be sure to read “Precautions for Replacement of Imager” on page 4-3 when changing the imager.

Note 3: ハーネス (coaxial cable) を抜く時は2-1ページの“Note for disconnecting the harness (coaxial cable)”を参照してください。

Note 3: Refer to page 2-1 “Note for disconnecting the harness (coaxial cable)” when changing the harness (coaxial cable).

Ref. No.	Part No.	Description
* 151	X-2159-300-1	BRACKET (VC) ASSY
152	A-1227-577-A	JJ-004 BOARD, COMPLETE (SERVICE)
153	2-898-191-01	RING UNIT (B187B (SERVICE))
154	X-2149-993-1	CHASSIS ASSY (D), CENTER
* 155	2-891-955-01	RETAINER, ND KNOB
* 156	2-891-954-01	KNOB, ND
* 157	2-891-956-01	PLATE, ND CLICK
158	2-891-975-01	RING, ORNAMENTAL
159	1-479-812-11	SWITCH BLOCK, CONTROL (CK18500)
160	A-1223-596-A	PRISM ASSY (SERVICE) (Note 1, 2)
* 161	2-891-979-01	PLATE (CMOS), INTERCEPTION

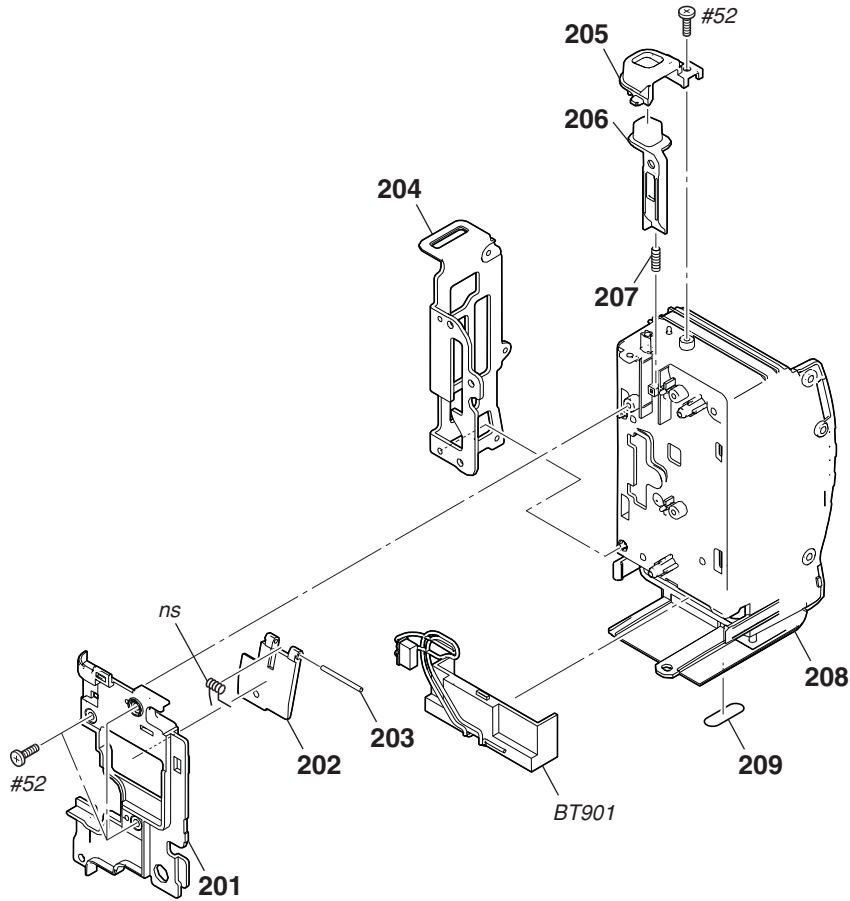
Ref. No.	Part No.	Description
* 162	X-2149-999-1	BRACKET (CL) ASSY
163	A-1227-243-A	UNIT ASSY (B187B (SERVICE))
164	1-963-577-41	HARNESS (COAXIAL CABLE) (Note 3)
165	CAUTION	WOVEN (T0.25), FABRIC NON
#14	2-599-475-11	SCREW (M1.7) (Silver)
#49	2-630-005-31	SCREW (M2), NEW TRUSTER, P2 (Black)
#50	2-891-494-11	SCREW (M2), NEW TRUSTER, P2 (Red)
#51	3-073-686-01	SCREW (M2X2.5) (Silver)
#54	3-318-203-11	SCREW, TAPPING, P2 (Black)
#57	7-627-852-18	SCREW, PRECISION +P 1.7X4 TYPE3 (Black)
#58	3-719-408-11	SCREW (B2), TAPPING, P3 (Silver)

# 5. REPAIR PARTS LIST

## HARDWARE LIST

### 5-1-5. BT BLOCK

ns: not supplied



• Refer to page 5-1 for mark △.

Ref. No.	Part No.	Description	Ref. No.	Part No.	Description
201	2-891-969-01	COVER, BT LOCK	207	3-968-771-01	SPRING, COMPRESSION
202	3-060-595-01	CLAW, BT LOCK	208	2-891-966-01	PANEL, BATTERY
203	3-968-770-01	SHAFT, BT	209	2-178-805-01	FOOT, RUBBER
204	2-891-968-01	SHEET METAL (L), STRAP	△ BT901	1-694-411-31	TERMINAL BOARD, BATTERY
205	2-891-970-11	COVER, BT RELEASE	#52	3-080-206-11	SCREW, TAPPING, P2 (Black)
206	2-891-967-01	RELEASE (SW)			

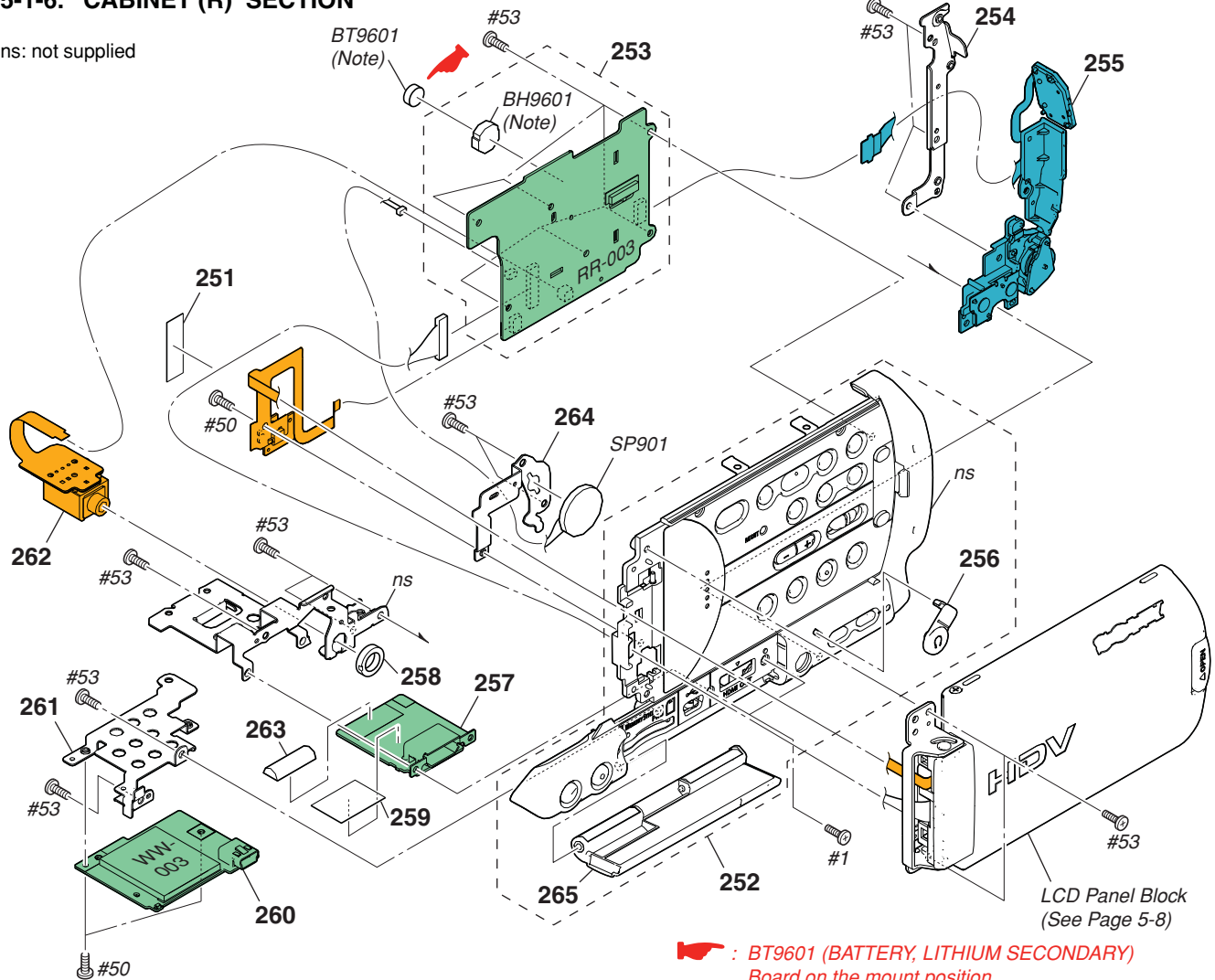
## 5. REPAIR PARTS LIST

### DISASSEMBLY

### HARDWARE LIST

### 5-1-6. CABINET (R) SECTION

ns: not supplied



Note: Replace the battery holder (BH9601) together when replacing the lithium battery (BT9601) on the RR-003 board. (The battery holder removed once cannot be used again.)  
When mounting these parts, mount new battery holder first and attach new lithium battery next.

Note: RR-003基板的リチウム電池(BT9601)を交換する場合はバッテリーホルダ(BH9601)も同時に新品に交換して下さい。(一度使用したバッテリーホルダは再使用できません。)  
部品取り付けの際は、先にバッテリーホルダを取り付けてからリチウム電池を装着して下さい。

: BT9601 (BATTERY, LITHIUM SECONDARY)  
Board on the mount position.  
(See page 4-56.)

#### CAUTION

Danger of explosion if battery is incorrectly replaced.  
Replace only with the same or equivalent type.

#### 注意

電池の交換は、正しく行わないと破裂する恐れがあります。電池を交換する場合には必ず同じ型名の電池又は同等品と交換してください。

• Refer to page 5-1 for mark ▲.

Ref. No.	Part No.	Description
251	3-941-343-01	TAPE (A)
252	X-2159-308-1	CABINET (R) ASSY (D)
253	A-1217-212-A	RR-003 BOARD, COMPLETE
* 254	2-892-033-01	PLATE, CF RETAINER
255	1-479-813-11	SWITCH BLOCK, CONTROL (CF18500)

256	2-892-026-01	LID, HEADPHONE
257	A-1217-219-A	HH-003 BOARD, COMPLETE
258	3-061-234-01	NUT (M6X0.5)
* 259	2-899-674-01	SHEET (HH), INSULATING
260	A-1217-214-A	WW-003 BOARD, COMPLETE

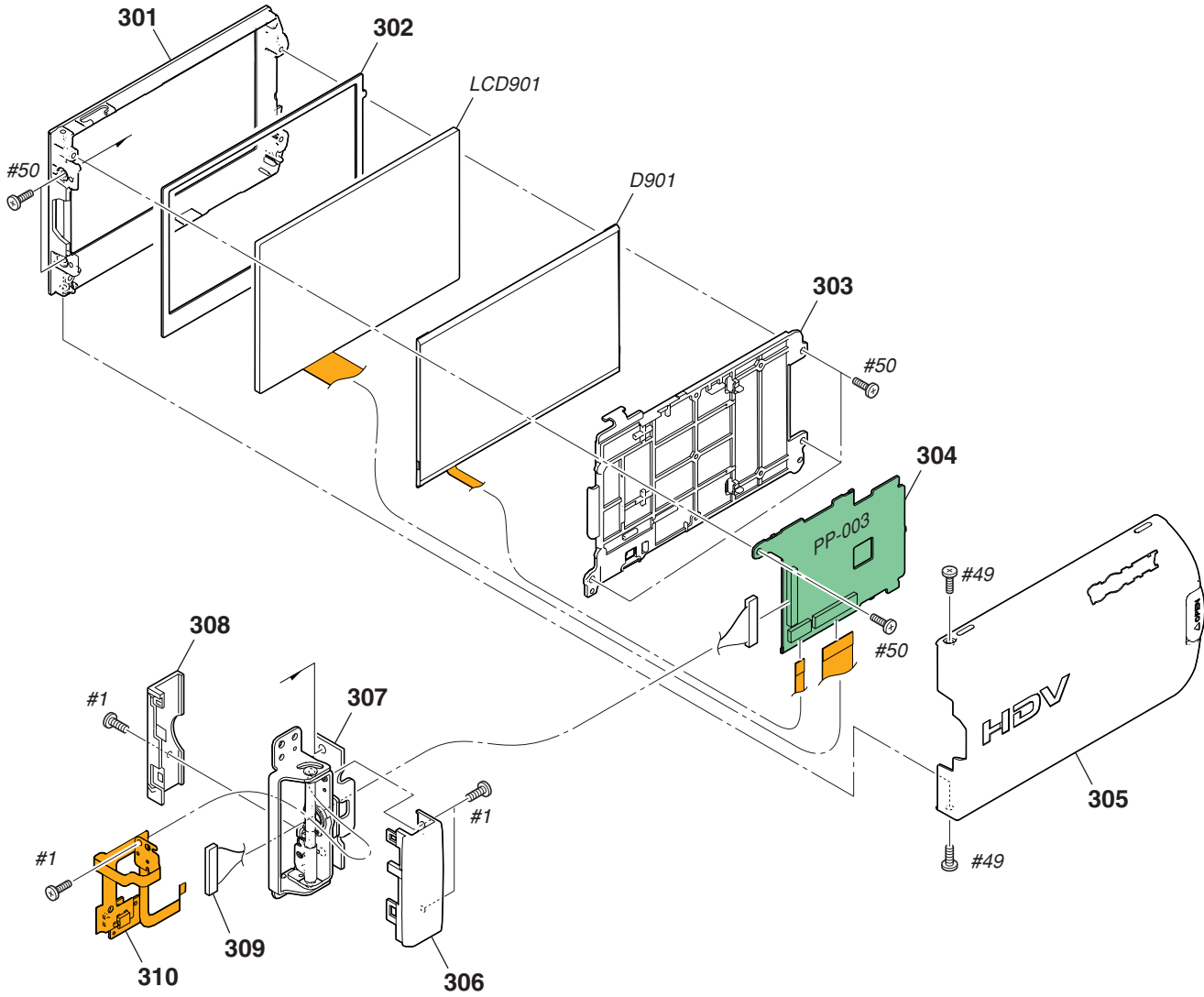
\* 261 2-892-030-01 FRAME JACK EYED

Ref. No.	Part No.	Description
262	A-1217-231-A	FP-486 FLEXIBLE BOARD, COMPLETE
* 263	2-892-034-01	SHEET (HH)
* 264	X-2159-309-1	RETAINER ASSY, SP
265	X-2176-355-1	LID (R) ASSY, JACK
▲ BH9601	1-756-615-41	HOLDER, BATTERY (Note)
▲ BT9601	1-756-134-12	BATTERY, STORAGE, LITHIUM (Note)
SP901	1-825-260-23	LOUD SPEAKER (1.6CM)
#1	2-635-562-11	SCREW (M1.7) (Black)
#50	2-891-494-11	SCREW (M2), NEW TRUSTER, P2 (Red)
#53	3-080-206-21	SCREW, TAPPING, P2 (Black)

# 5. REPAIR PARTS LIST

## HARDWARE LIST

### 5-1-7. LCD PANEL BLOCK



Ref. No.	Part No.	Description
301	2-892-044-11	CABINET (L), PANEL
* 302	2-892-045-01	CUSHION, LCD
303	X-2159-313-1	FRAME ASSY, PANEL
304	A-1217-211-A	PP-003 BOARD, COMPLETE
305	X-2159-312-1	CABINET (R) ASSY (D), PANEL
306	2-892-046-11	COVER (R), HINGE
307	X-2159-310-1	HINGE ASSY
308	3-090-382-21	COVER (REAR), HINGE

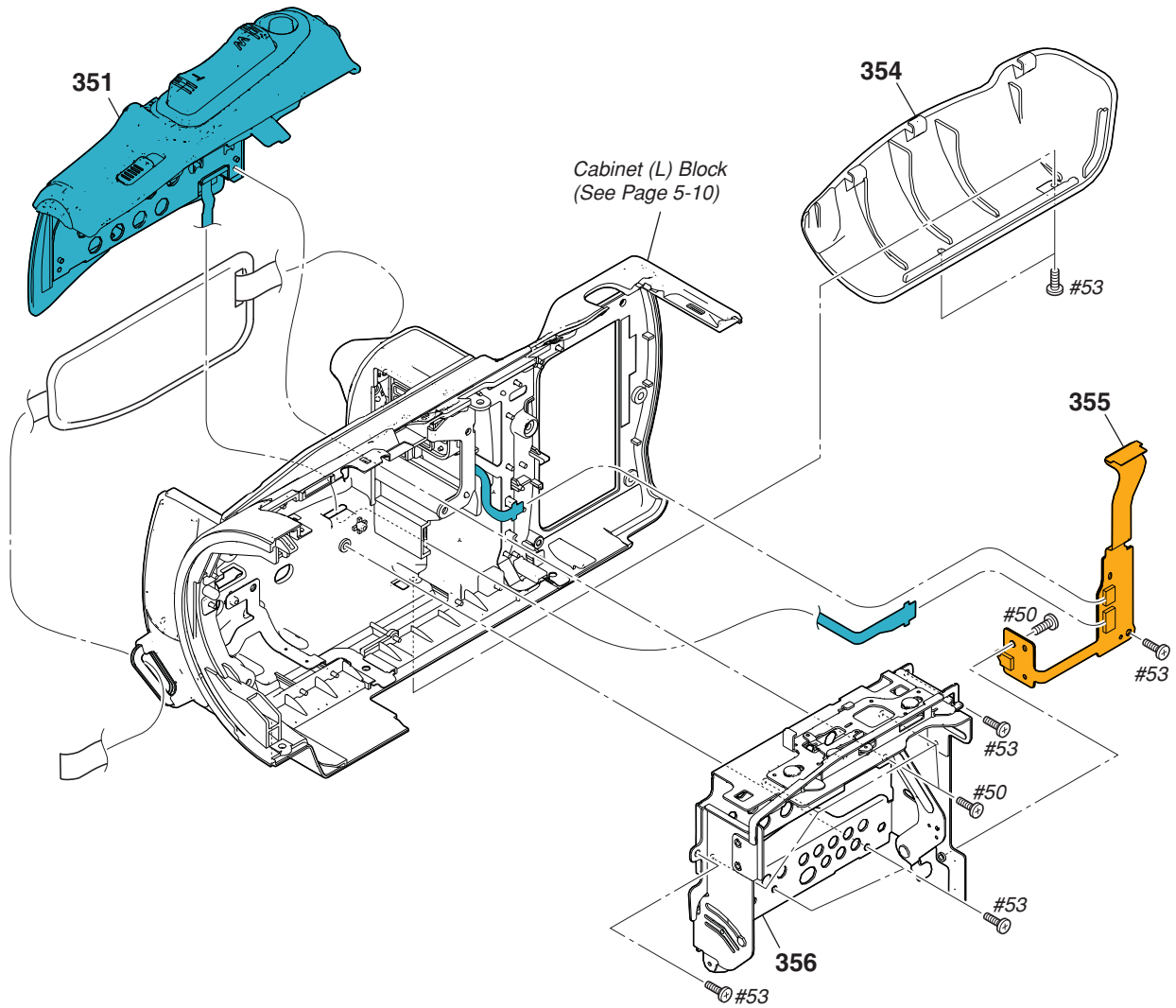
Ref. No.	Part No.	Description
309	1-964-790-11	HARNESS (PR-074)
310	A-1217-232-A	FP-487 FLEXIBLE BOARD, COMPLETE
D901	1-479-622-11	BLOCK, LIGHT GUIDE PLATE (3.5)
LCD901	8-753-270-54	ACX545AKA-1
#1	2-635-562-11	SCREW (M1.7) (Black)
#49	2-630-005-31	SCREW (M2), NEW TRUSTER, P2 (Black)
#50	2-891-494-11	SCREW (M2), NEW TRUSTER, P2 (Red)

# 5. REPAIR PARTS LIST

## DISASSEMBLY

## HARDWARE LIST

### 5-1-8. CABINET (L) SECTION



Ref. No.	Part No.	Description
351	1-479-814-21	SWITCH BLOCK, CONTROL (PL18500)
354	2-891-976-01	COVER, GRIP
355	A-1217-230-A	FP-485 FLEXIBLE BOARD, COMPLETE
* 356	X-2159-301-1	FRAME ASSY, CS

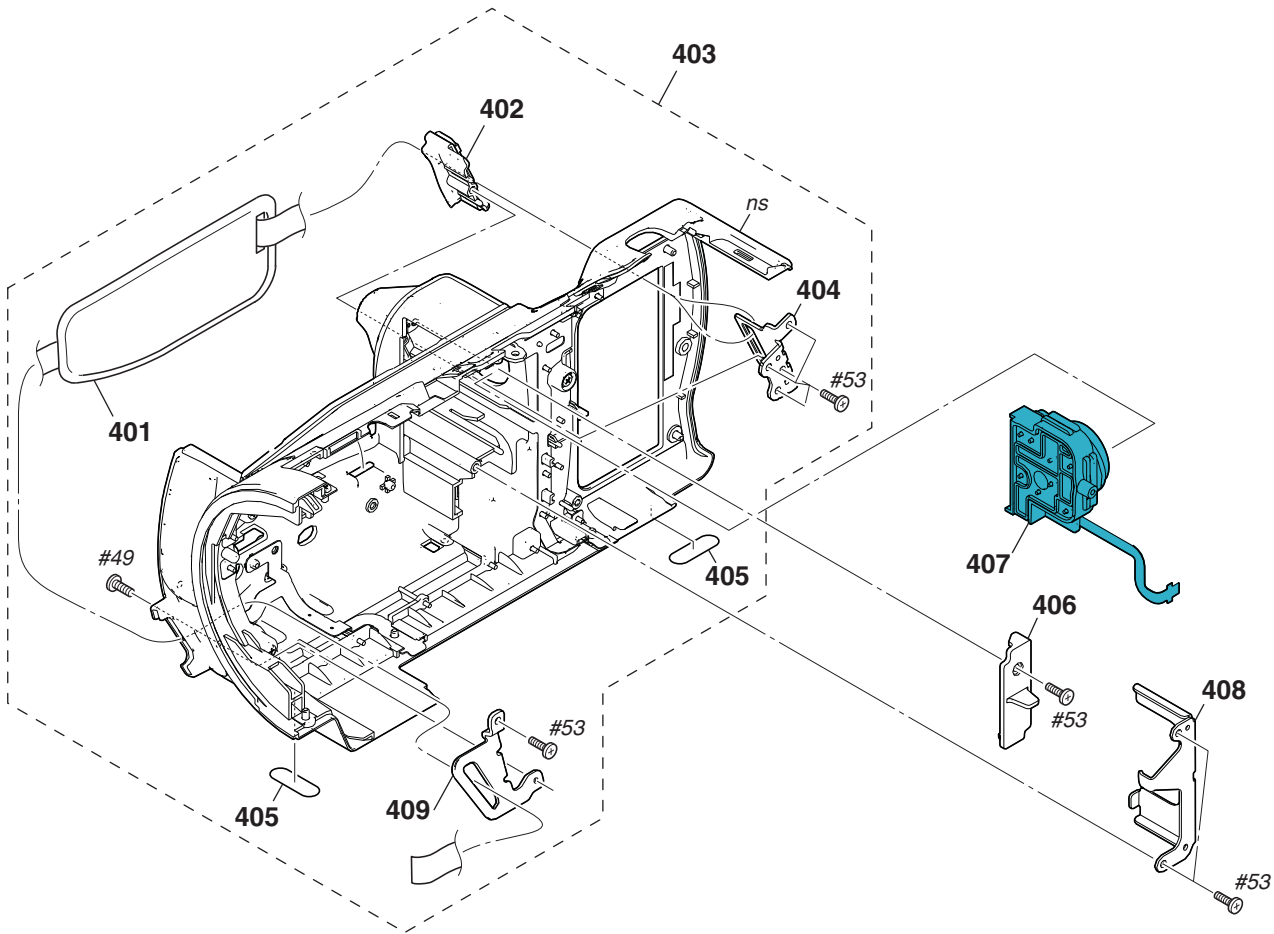
Ref. No.	Part No.	Description
#50	2-891-494-11	SCREW (M2), NEW TRUSTER, P2 (Red)
#53	3-080-206-21	SCREW, TAPPING, P2 (Black)

# 5. REPAIR PARTS LIST

## HARDWARE LIST

### 5-1-9. CABINET (L) BLOCK

ns: not supplied



Ref. No.	Part No.	Description
401	2-892-004-01	BELT, GRIP
* 402	2-892-001-01	HOLDER, GRIP BELT
403	X-2159-304-1	CABINET (L) ASSY (D)
* 404	2-892-003-01	BRACKET (R), GRIP BELT
405	2-178-805-01	FOOT, RUBBER
* 406	2-892-005-01	RETAINER, PS

Ref. No.	Part No.	Description
407	1-479-811-11	SWITCH BLOCK, CONTROL (PS18500)
* 408	2-891-981-01	PLATE, PS FIXED
* 409	2-892-002-01	BRACKET (F), GRIP BELT
#49	2-630-005-31	SCREW (M2), NEW TRUSTER, P2 (Black)
#53	3-080-206-21	SCREW, TAPPING, P2 (Black)

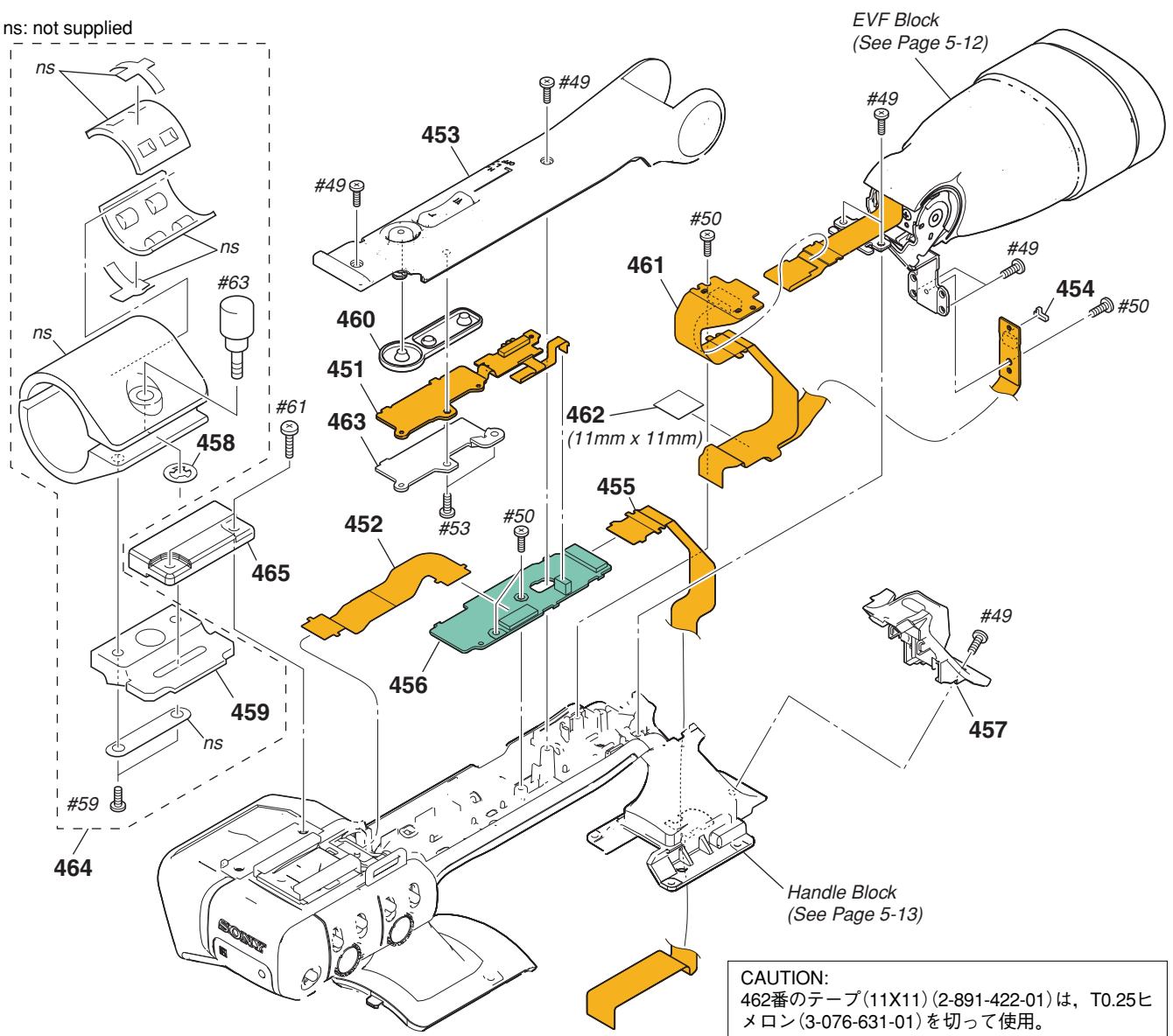
# 5. REPAIR PARTS LIST

## DISASSEMBLY

## HARDWARE LIST

### 5-1-10. HANDLE SECTION

ns: not supplied



**CAUTION:**  
462番のテープ(11X11) (2-891-422-01)は、T0.25ヒメロン(3-076-631-01)を切って使用。

**CAUTION:**  
For the part of 462: TAPE (11X11) (2-891-422-01), cut WOVEN (T0.25), FABRIC NON (3-076-631-01) into the desired length and use it.

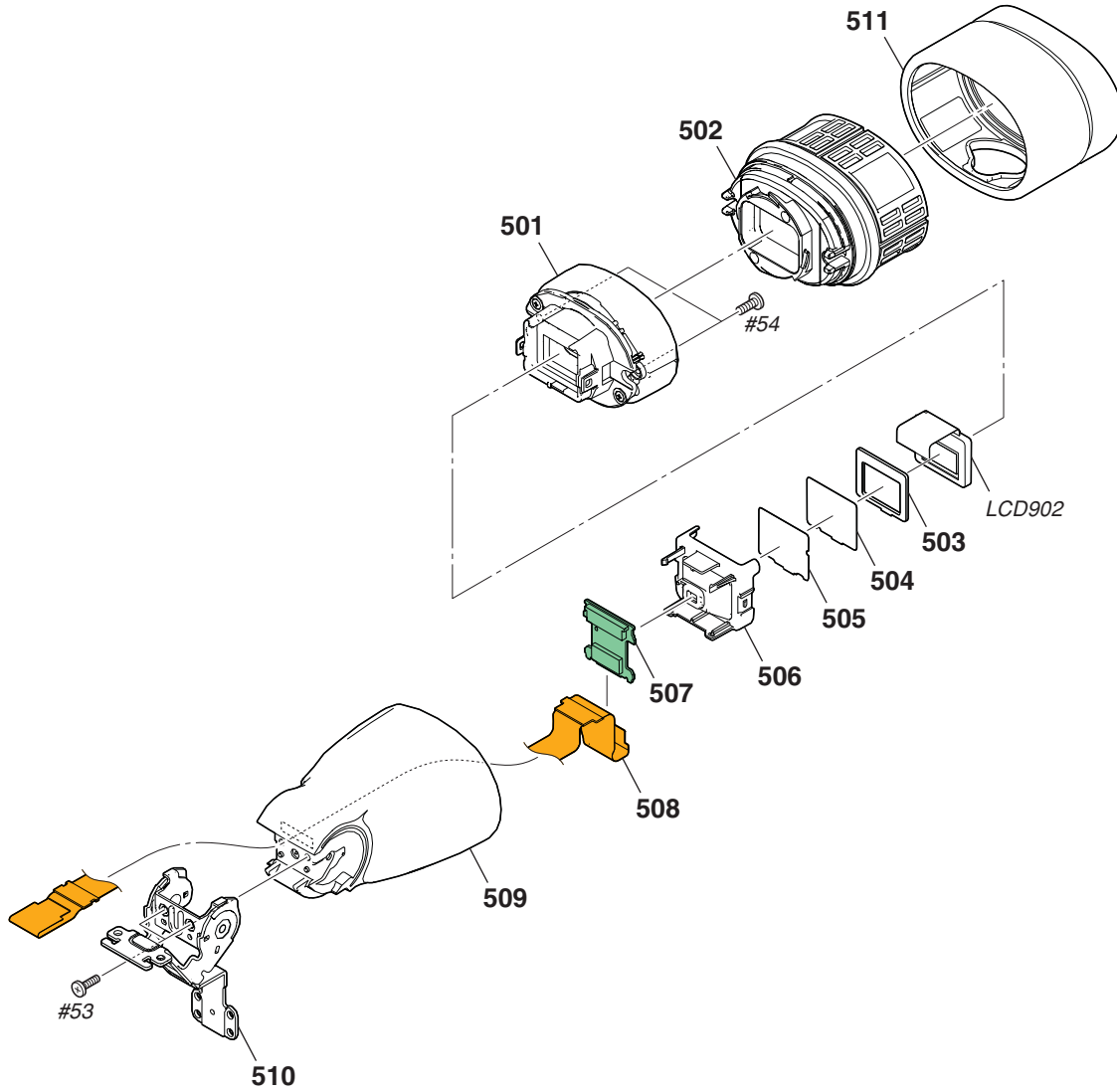
Ref. No.	Part No.	Description
451	A-1217-228-A	FP-483 FLEXIBLE BOARD, COMPLETE
452	1-870-121-11	FP-499 FLEXIBLE BOARD
453	X-2159-321-1	CABINET (UPPER) ASSY (D), HAN
* 454	2-891-983-01	CUSHION, LIGHT INTERCEPTION
455	1-870-122-11	FP-500 FLEXIBLE BOARD
456	A-1217-218-A	GG-003 BOARD, COMPLETE
457	X-2159-323-1	BASE ASSY (D), REMOTE CONTROL
458	3-165-904-01	WASHER, SCREW STOPPER
459	3-060-810-01	BASE, MICROPHONE HOLDER
* 460	2-892-090-01	KEY, RUBBER TACT
461	A-1217-229-A	FP-484 FLEXIBLE BOARD, COMPLETE

Ref. No.	Part No.	Description
462	CAUTION	TAPE (11X11)
463	2-898-108-01	BASE, 2ND KEY
464	X-3950-604-5	HOLDER ASSY, MICROPHONE
465	3-064-629-01	RETAINER (UPPER) D, HOLDER
#49	2-630-005-31	SCREW (M2), NEW TRUSTER, P2 (Black)
#50	2-891-494-11	SCREW (M2), NEW TRUSTER, P2 (Red)
#53	3-080-206-21	SCREW, TAPPING, P2 (Black)
#59	3-080-205-21	SCREW, TAPPING, P2 (Silver)
#61	7-682-549-09	SCREW +B 3X10 (Black)
#63	3-060-811-21	SCREW (M5) (Black)

# 5. REPAIR PARTS LIST

## HARDWARE LIST

### 5-1-11. EVF BLOCK



Ref. No.	Part No.	Description
501	X-2159-325-1	HOLDER ASSY, VF PANEL
502	X-2159-324-1	FINDER ASSY
503	2-892-122-01	CUSHION, VF PANEL
504	2-633-596-01	SHEET (1), VF PRISM
505	2-633-595-01	SHEET (2), VF DIFFUSION
506	2-892-120-01	LAMP, VF HOLDER,
507	A-1217-213-A	UU-003 BOARD, COMPLETE

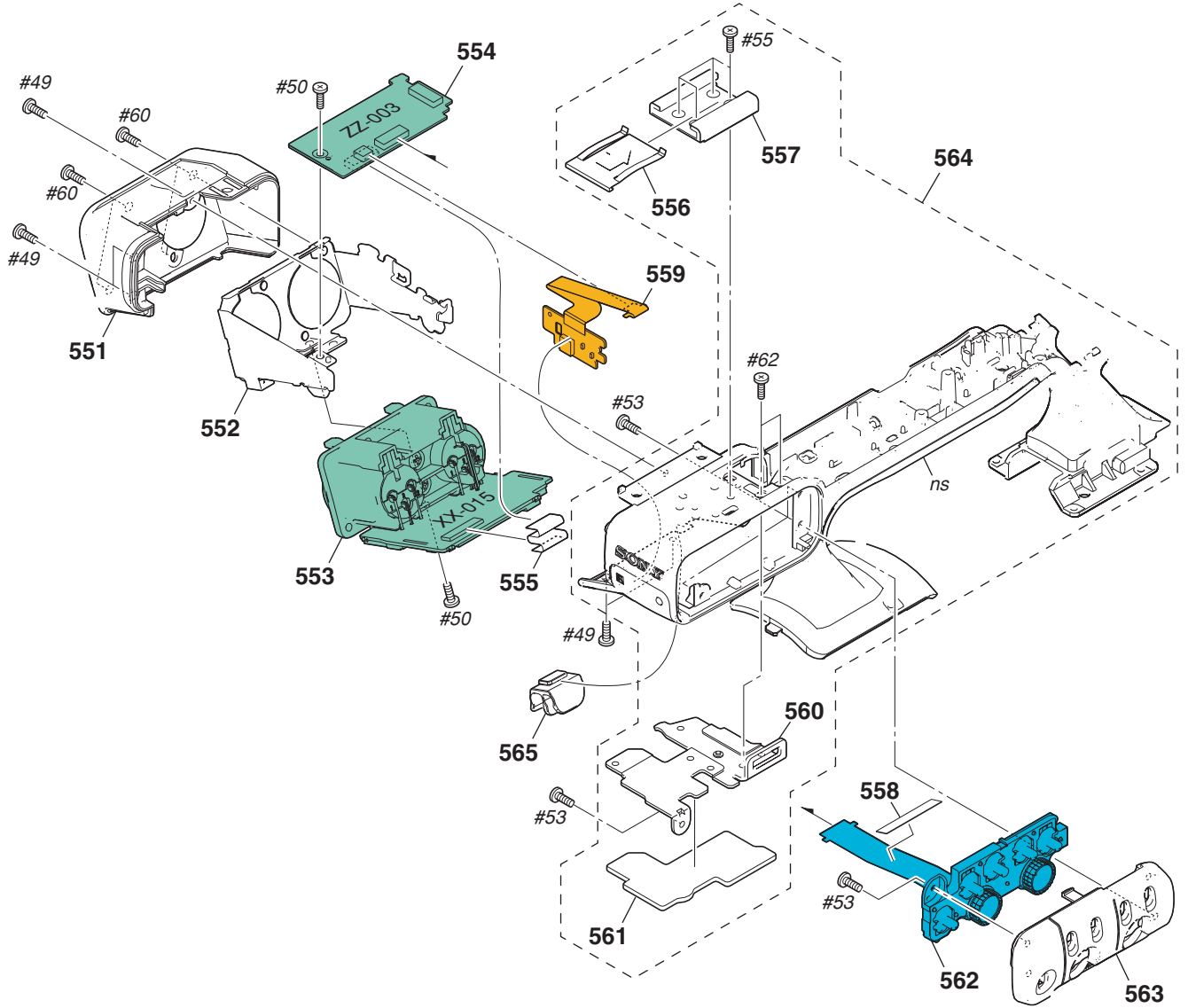
Ref. No.	Part No.	Description
508	1-870-123-11	FP-501 FLEXIBLE BOARD
509	X-2159-328-1	CABINET ASSY (D), VF
510	X-2159-326-1	TILT ASSY, VF
511	2-892-123-01	EYE CUP
LCD902	8-753-210-99	LCX068AK-1
#53	3-080-206-21	SCREW, TAPPING, P2 (Black)
#54	3-318-203-11	SCREW, TAPPING, P2 (Black)

# 5. REPAIR PARTS LIST

## HARDWARE LIST

### 5-1-12. HANDLE BLOCK

ns: not supplied



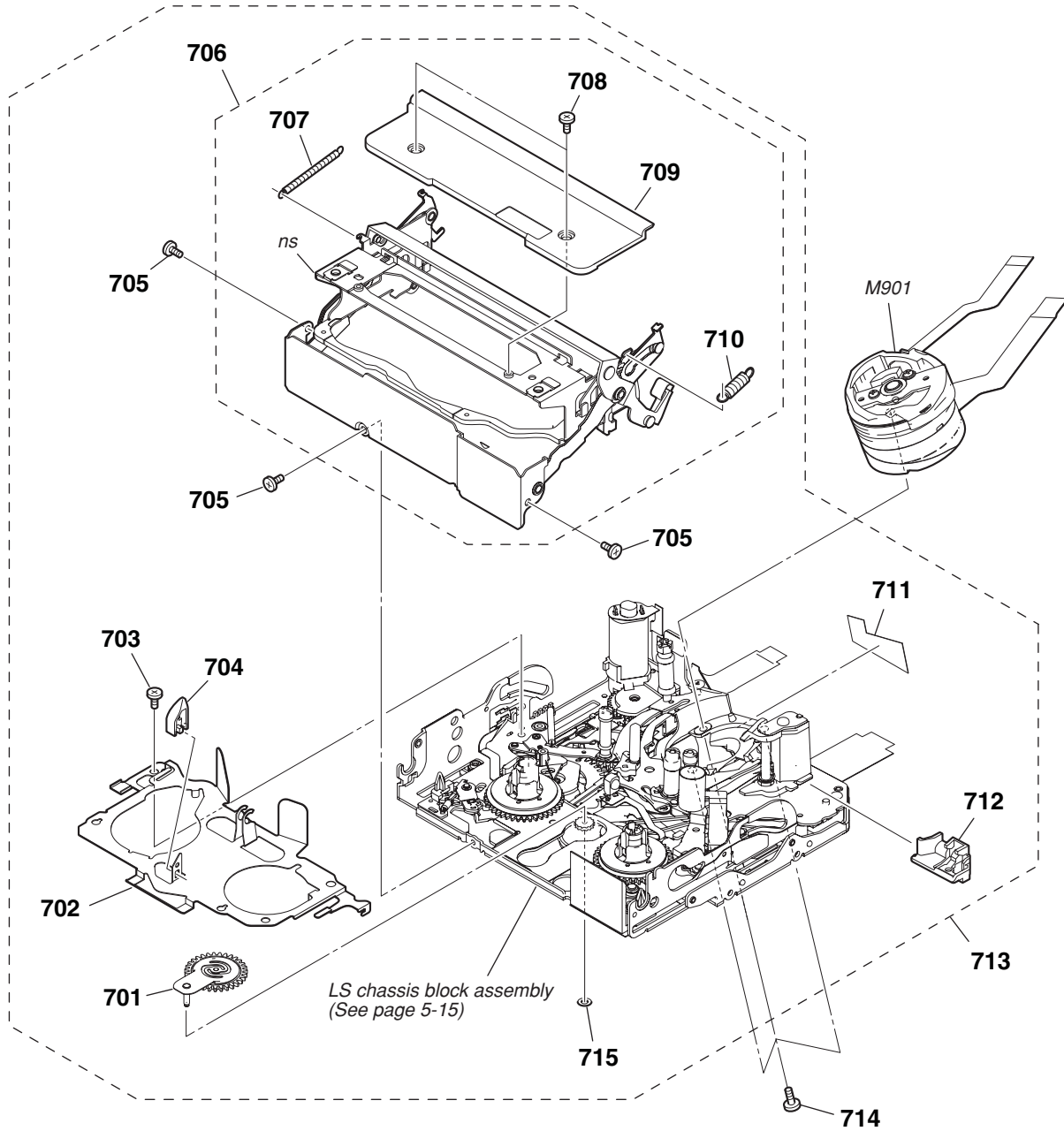
Ref. No.	Part No.	Description
551	2-892-093-01	CABINET (L), XL
* 552	2-892-094-01	SHEET METAL, XL
553	A-1217-224-A	XX-015 BOARD, COMPLETE
554	A-1217-215-A	ZZ-003 BOARD, COMPLETE
555	1-833-615-11	CABLE, FLEXIBLE FLAT (FFC-088)
556	3-688-754-11	SPRING
557	3-069-286-21	SHOE, ACCESSORY
* 558	2-894-845-01	TAPE (XR)
559	A-1217-233-A	FP-488 FLEXIBLE BOARD, COMPLETE
560	2-892-068-01	SHEET METAL, XL BELT
561	2-892-069-01	SHEET (D), POWDER PREVENTION

Ref. No.	Part No.	Description
562	1-479-815-11	SWITCH BLOCK, CONTROL (XR91030)
563	2-892-092-01	CABINET (R), XL
564	X-2159-318-1	CABINET ASSY (D), HANDLE
565	2-892-095-01	CLAMP, CABLE
#49	2-630-005-31	SCREW (M2), NEW TRUSTER, P2 (Black)
#50	2-891-494-11	SCREW (M2), NEW TRUSTER, P2 (Red)
#53	3-080-206-21	SCREW, TAPPING, P2 (Black)
#55	2-655-582-11	SCREW 0+P2 M2 NEWTRU-STAR (Silver)
#60	3-061-062-11	BOLT (M2.6) (Black)
#62	3-080-202-21	SCREW (M2), LOCK ACE, P2 (Silver)

## 5. REPAIR PARTS LIST

### 5-1-13. MECHANISM DECK SECTION

ns: not supplied



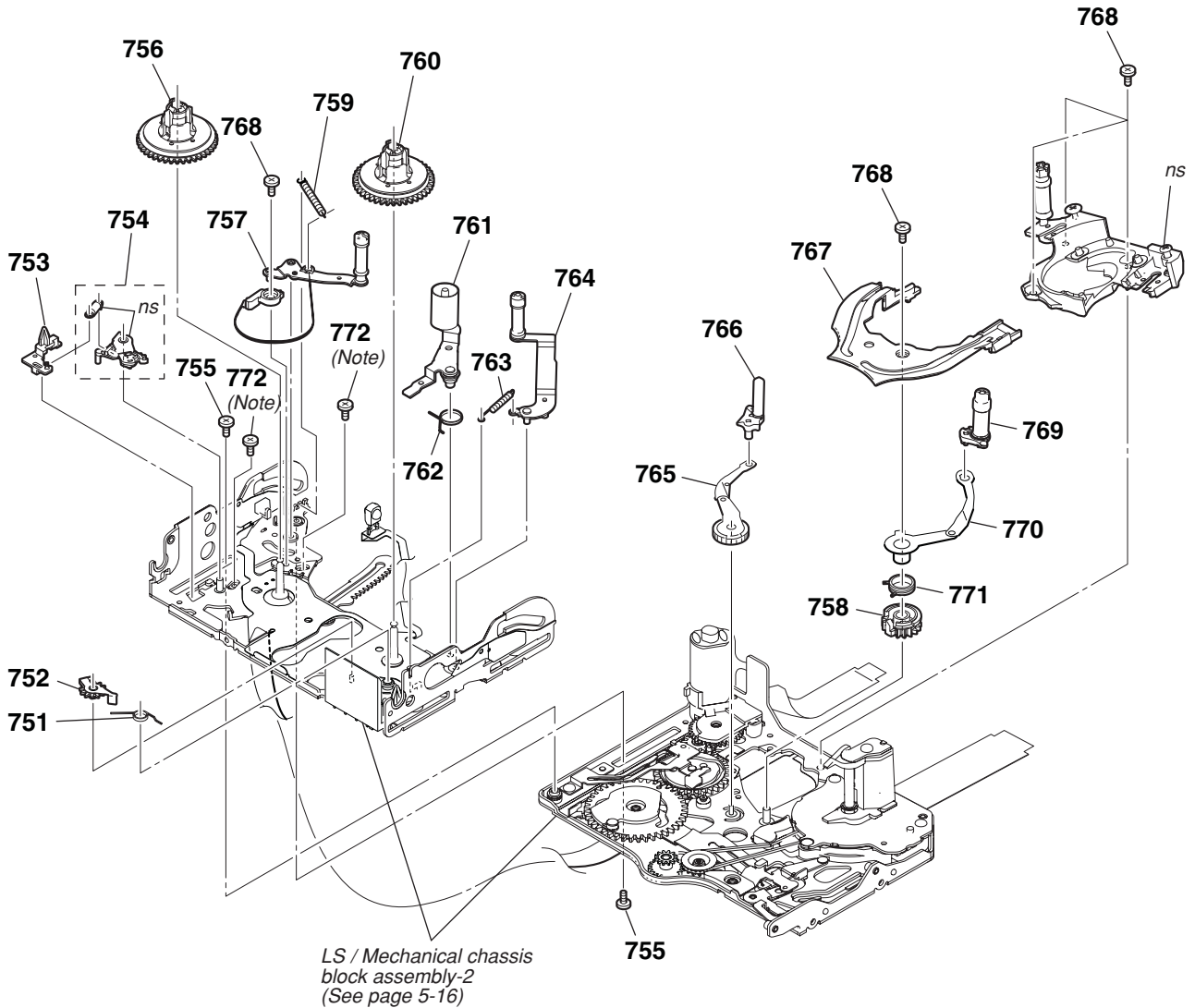
Ref. No.	Part No.	Description
701	X-2024-478-1	PENDULUM ASSY
702	2-342-917-02	LED BASE
703	7-627-850-77	SCREW, PRECISION +P 1.4X1.8
704	3-079-366-11	RELEASE, REEL LOCK
705	3-703-816-08	SCREW (M1.4X1.4), SPECIAL HEAD
706	X-2149-724-1	COMPARTMENT ASSY, CASSETTE
707	2-342-926-01	SPRING (ARM S), TENSION COIL
708	2-546-417-01	SCREW (M1.4)
709	2-342-933-02	PLATE, TOP

Ref. No.	Part No.	Description
710	2-342-927-01	SPRING (ARM T), TENSION COIL
711	2-541-585-01	SHEET, FLEXIBLE ADHESIVE
712	2-342-918-01	TG6 CATCHER
713	A-1080-997-A	MD (N100) SUB ASSY A
714	3-703-816-13	SCREW (M1.4X2.0), SPECIAL HEAD
715	3-315-414-31	WASHER
M901	A-1128-533-A	DRUM (DEH-33B-R)

# 5. REPAIR PARTS LIST

## 5-1-14. LS/MECHANICAL CHASSIS BLOCK ASSEMBLY-1

ns: not supplied



**Note:** These two screws are the fixing screws of the LS cam plate. These two fixing screws are used for adjusting the LS cam plate position. (refer to 4-2. LS cam adjustment of DV mechanical adjustment manual IX)

Ref. No.	Part No.	Description	Ref. No.	Part No.	Description
751	2-342-759-01	SPRING, RVS BRAKE	763	2-342-626-01	SPRING (RETURN TG6), EXTENSION
752	A-1083-005-A	BLOCK ASSY, RVS BRAKE	764	A-1083-002-A	BLOCK ASSY, TG6
753	2-342-731-01	POSITIONING, S	765	X-2024-468-3	ARM ASSY (S), GL
754	A-1083-006-A	BLOCK ASSY, S BRAKE	766	X-2024-465-1	COASTER (S) ASSY
755	3-075-097-11	SCREW (M1.4X1.4), SPECIAL HEAD	767	2-342-612-01	RAIL
756	X-2024-473-1	TABLE ASSY, S REEL	768	3-703-816-13	SCREW (M1.4X2.0), SPECIAL HEAD
757	A-1083-007-B	BLOCK ASSY, TENSION REGULATOR	769	X-2024-466-1	COASTER (T) ASSY
758	2-342-705-01	GEAR (T), GL	770	X-2024-469-1	ARM (T) ASSY, GL
759	2-342-902-01	SPRING, TENSION REGULATOR	771	2-342-716-01	SPRING (T), TORSION COIL
760	X-2024-474-1	TABLE ASSY, T REEL	772	3-703-816-08	SCREW (M1.4X1.4), SPECIAL HEAD
761	X-2024-476-1	ARM ASSY, PINCH			(for adjustment)
762	2-342-906-01	SPRING (PINCH RETURN), TORSION			

