

PACKING LIST



ATTENTION



- Clean your rail with dry towel after use.
- Keep your shaft after cleaning with oilseal.
- Cover your item with towel or papertowel to store
- Place your item at dry place
- We recommend you to place the item horizontally.

COMPANY & INFORMATION

811 Ezen Mechazone
2979 Hagun-ri Yangchon-myeon
Gimpo-si Gyeonggi-do S.KOREA
TEL: 82-708-630-6464 / FAX: 82-2-6008-0820

WWW.VARAVON.COM

e-mail: varavon@naver.com

MADE IN KOREA

SLIDECAM *lite*



- Manual -



VARAVON

SETTING & ASSEMBLING



SPECIAL STEEL ROLLER BEARING



Roller Bearing Camera Slider



Adjusting Brake (Stop Bar)



Assembling Leg



Adaptable Video Head Pin



Easy way for mounting oil seal



Oil seal for cleansing

MODEL & SPECIFICATION



Model 800

Model 600

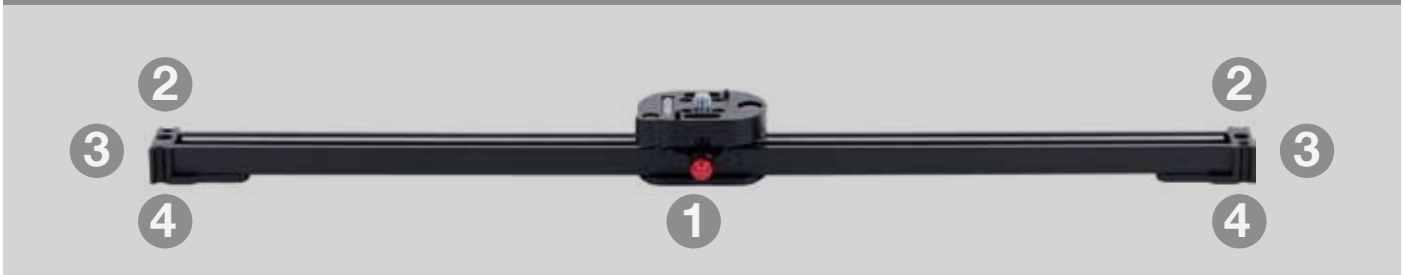
**The Compact & Strong
Body of Aluminum Alloy**

9kg (19.8lb) / maximum load
3~6kg / optimal load

Model	LITE 600	LITE 800
Length	600 mm (24 in)	800 mm (32 in)
Weight	1.25 kg (2.7 lb)	1.5 kg (3.3 lb)
Width	30mm (1.2 in)	
Material	Aluminum Alloy / Steel	
Maximum Load	9kg (19.8 lb)	
Optimal Load	3~6kg (6.6~13 lb)	
Brand	Varavon Slidecam Lite	

SLIDER APPLICATION

Function of the Hole 1/4 inch, 3/8 inch



1 Slope Shoot
Vertical Shoot

2 Flip Shoot

3 Vertical Shoot
Slope Shoot

4 Crane Shoot

Flip Shoot



Crane Shoot



Slope Shoot



Vertical Shoot



APPLY DIVERSE CAMERAS

Enjoy With Your iPhone!



JVC HM100



Canon 5D Mark III



Sony DSC-P150



Canon C300

TENSION TUNING

NOTE

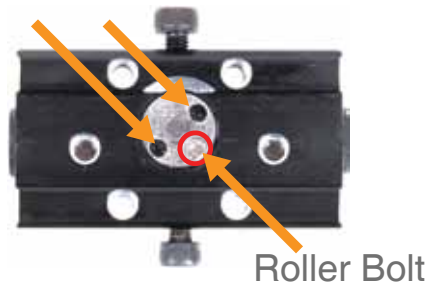


Special Feature

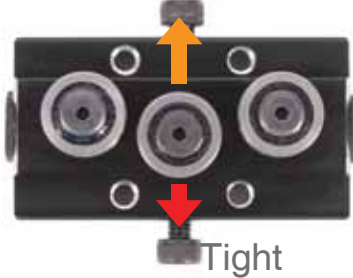
- Roller bearing of the Slidecam LITE is small and light. So, Adhesion of the roller and the shaft is low. This is characteristic of a small roller.
- When adjusting the tension(friction), 2~ 3kg weight must be raised on the rollers.

* Very precise work is needed for tension adjustment.

Adjust Tension



Loosen

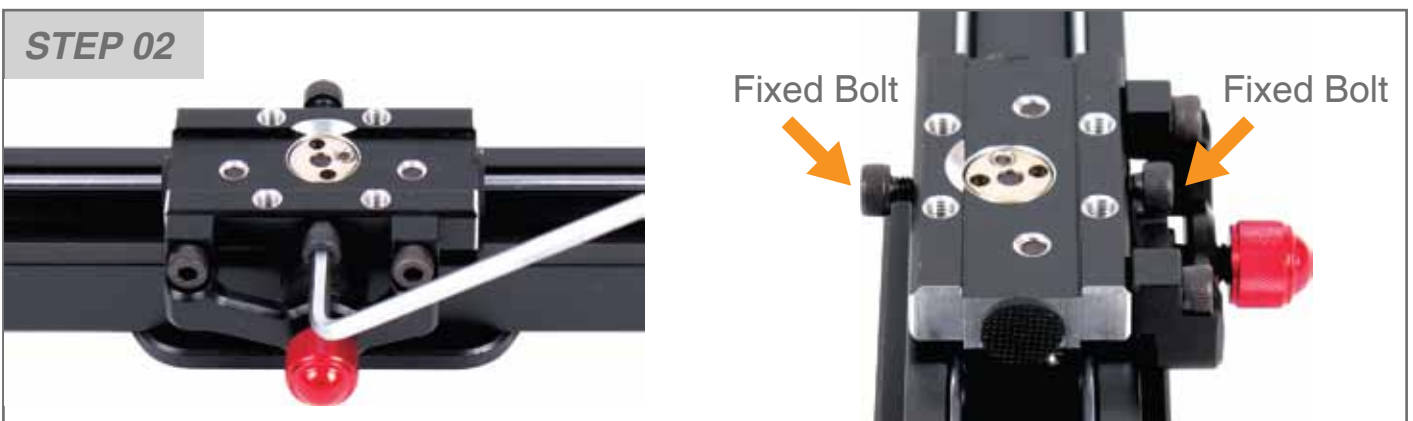


STEP 01



Use wrench to loosen 4 bolts on the block.

STEP 02



Loosen the bolts to make a space for roller to move.

TENSION TUNING

STEP 03



Loosen the bolt on the center.

STEP 04

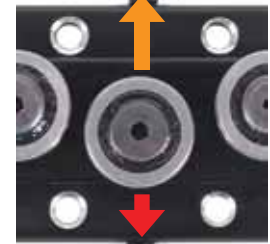


TOP

BOTTOM

Tight

Loosen



Loosen

Tight

Move the roller so you can adjust tension.

STEP 05



STEP 06



Tighten the bolt on the center.

Tighten the bolt on the both sides while you checking secure.