

YOUPLAY

User Manual

(Rev 2.2)



SEDE DI BOLOGNA:

VIA CADUTI DI SABBIVNO 6/F • 40011 ANZOLA EMILIA • BOLOGNA • ITALY
PHONE: +39 051 736555 • +39 051 736154 • FAX: +39 051 736170
e-mail: info@axeltechnology.com • <http://www.axeltechnology.com>

SEDE DI BERGAMO:
VIA ITALIA, 1
24030 MEDOLAGO • BERGAMO • ITALY

SEDE DI LUCCA - Broadcast Audio Devices s.r.l.
VIALE MARCONI, 86
55045 PIETRASANTA • LUCCA • ITALY

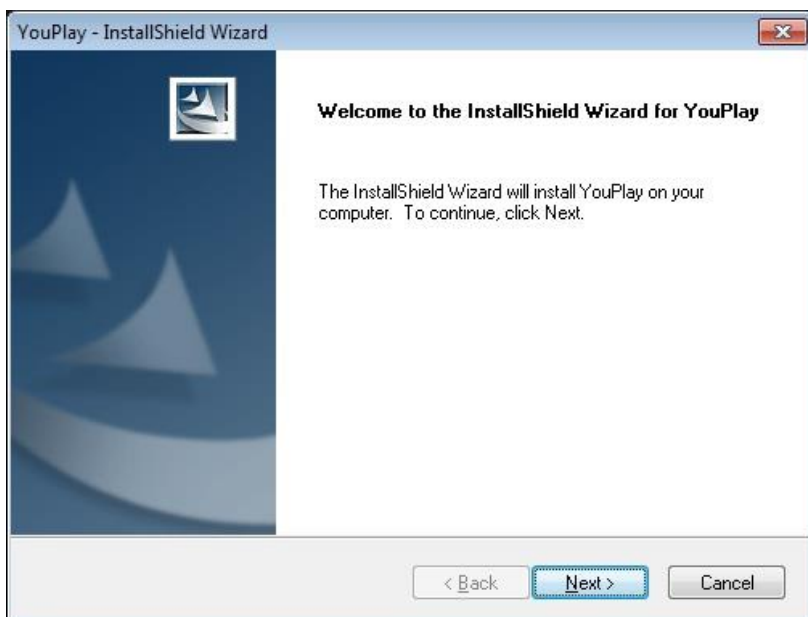
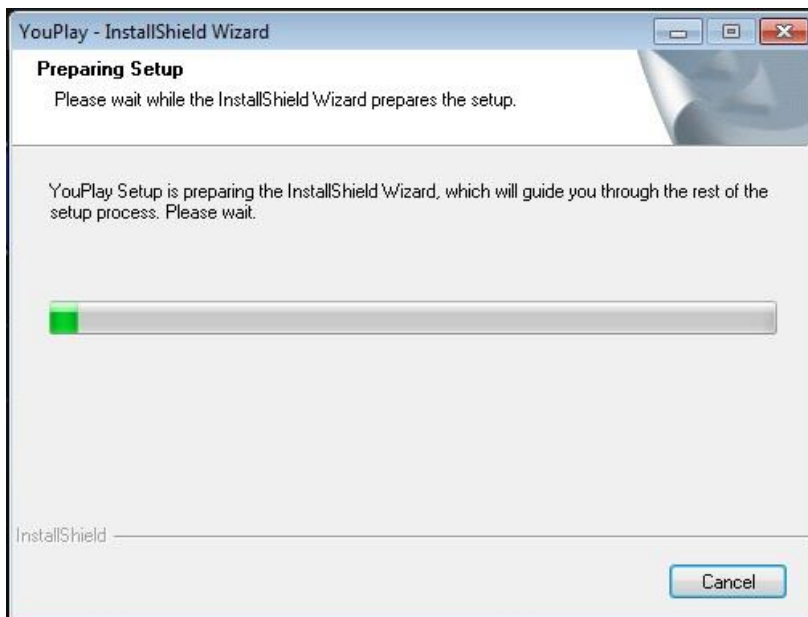
SEDE DI ROMA:
VIA SALARIA, 223 C
00015 MONTEROTONDO • ROMA • ITALY

CONTENT

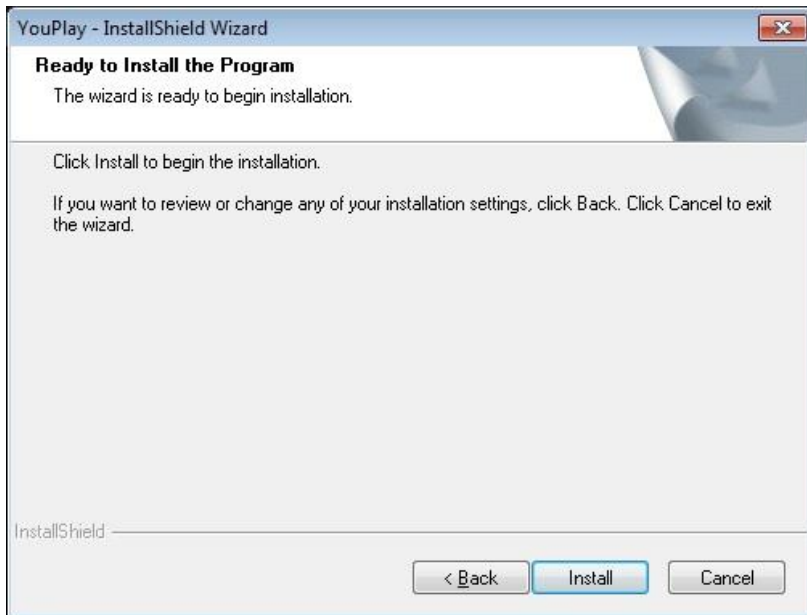
1	INSTALLATION	3
2	HOW TO USE YOUPLAY	5
2.1	RUN THE SOFTWARE.....	5
2.2	HOW TO INSERT A CLIP ON THE PLAYLIST.....	7
2.3	PLAYLIST MANAGEMENT OPTIONS.....	7
2.4	HOW TO PREPARE A CLIP TO BE PLAYED.....	8
2.5	CLIPS OPTIONS.....	8
2.6	PLAYOUT OPTIONS.....	12
2.7	RECORDER OPTIONS.....	14
3	MULTICHANNEL	19
4	SETTINGS	22
4.1	GENERAL.....	22
4.2	DEFAULT.....	23
4.3	PLAYOUT.....	24
4.3.1	*LOGO .ACG FORMAT(ONLY YOUPLAY BROADCAST & YOUPLAY SERVER).....	25
4.4	CAPTURE(ONLY YOUPLAY SERVER).....	25
4.5	REMOTE(ONLY YOUPLAY BROADCAST & YOUPLAY SERVER).....	27
4.6	VDCP(ONLY YOUPLAY BROADCAST & YOUPLAY SERVER).....	28
4.7	SHORTCUTS.....	29
4.8	API(ONLY YOUPLAY BROADCAST & YOUPLAY SERVER).....	30
4.9	TOOLS.....	30
4.10	LOG.....	31
4.11	ANALYSIS OF DAYLIGHT SAVING TIME (SUMMER TIME / WINTER TIME SWITCHING) MANAGEMENT.....	32
4.11.1	Recording (LTC UTC DURATION).....	32
4.11.2	Playout.....	33
5	FINAL CONSIDERATION AND AXEL TECHNOLOGY CONTACT	34

1 INSTALLATION

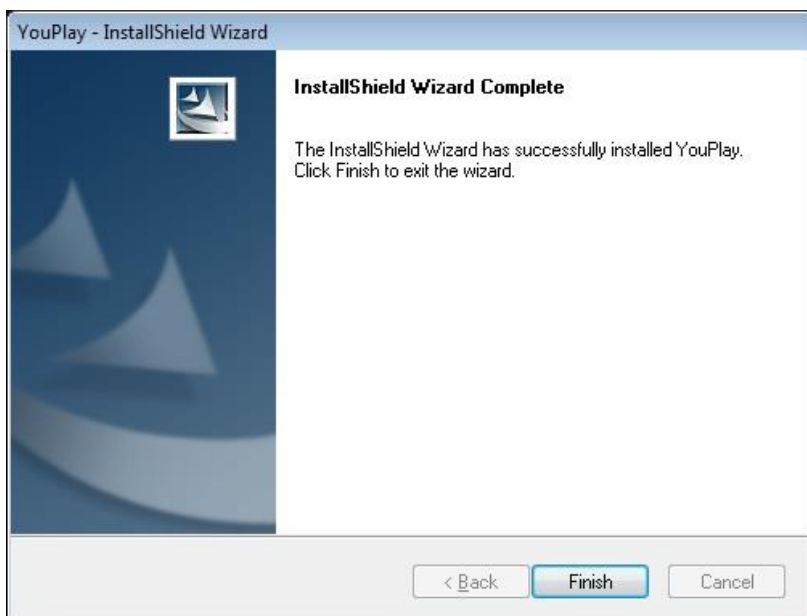
To install YouPlay on your pc, run the install shield



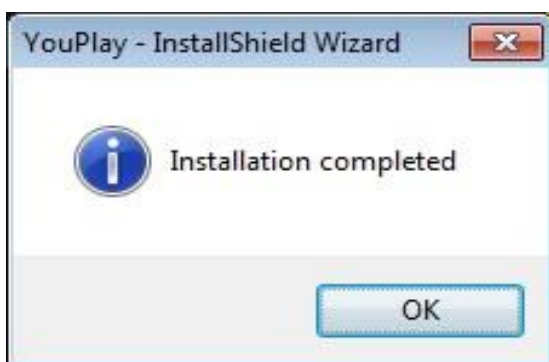
Press NEXT when requested



When you click the **INSTALL** button, the setup will install YouPlay and come other important components, as CG Composer, CG Samples and Multimediapack. After all the installations, it will show the following window:



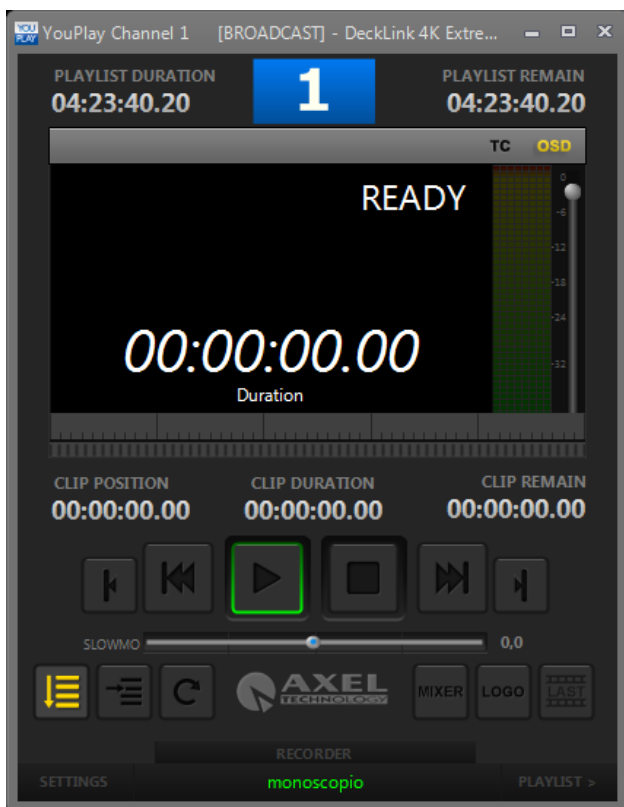
Click finish to complete the setup. It will show a window that confirm that the installation is complete



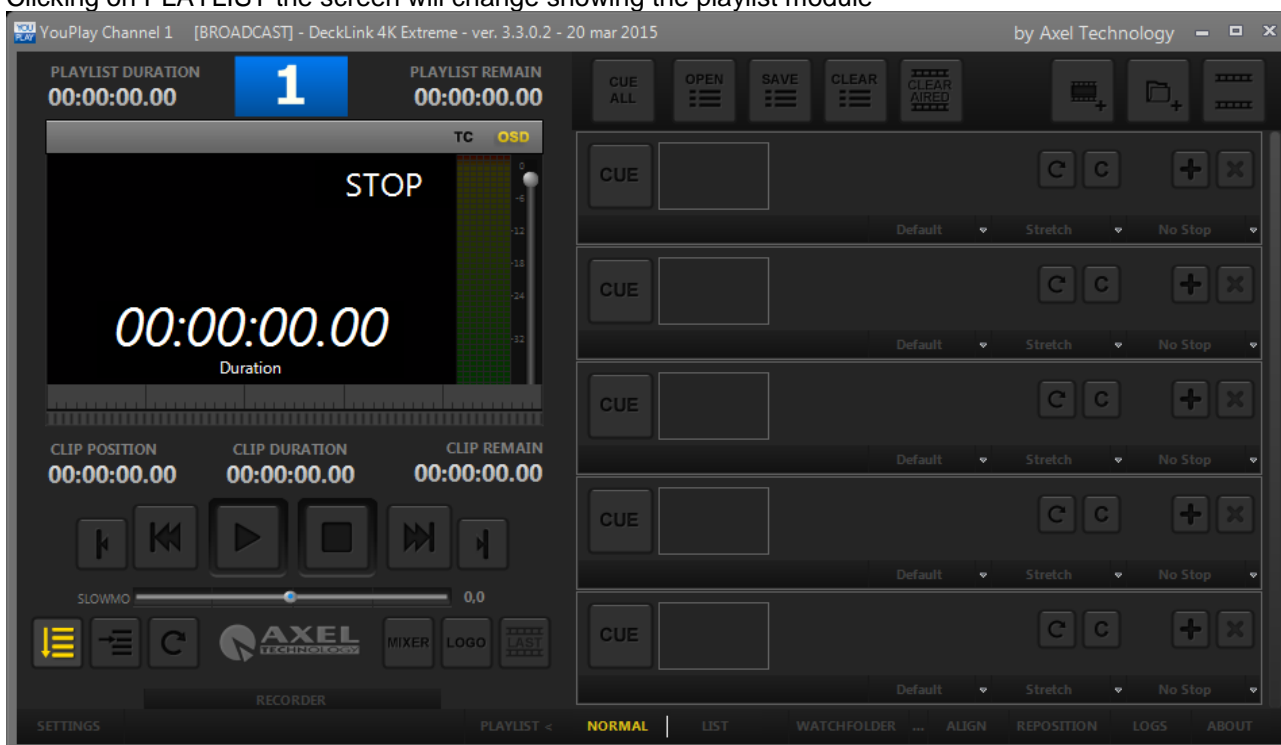
2 HOW TO USE YOUPLAY

2.1 RUN THE SOFTWARE

When you launch the YOUPLAY icon, it will show the following screen

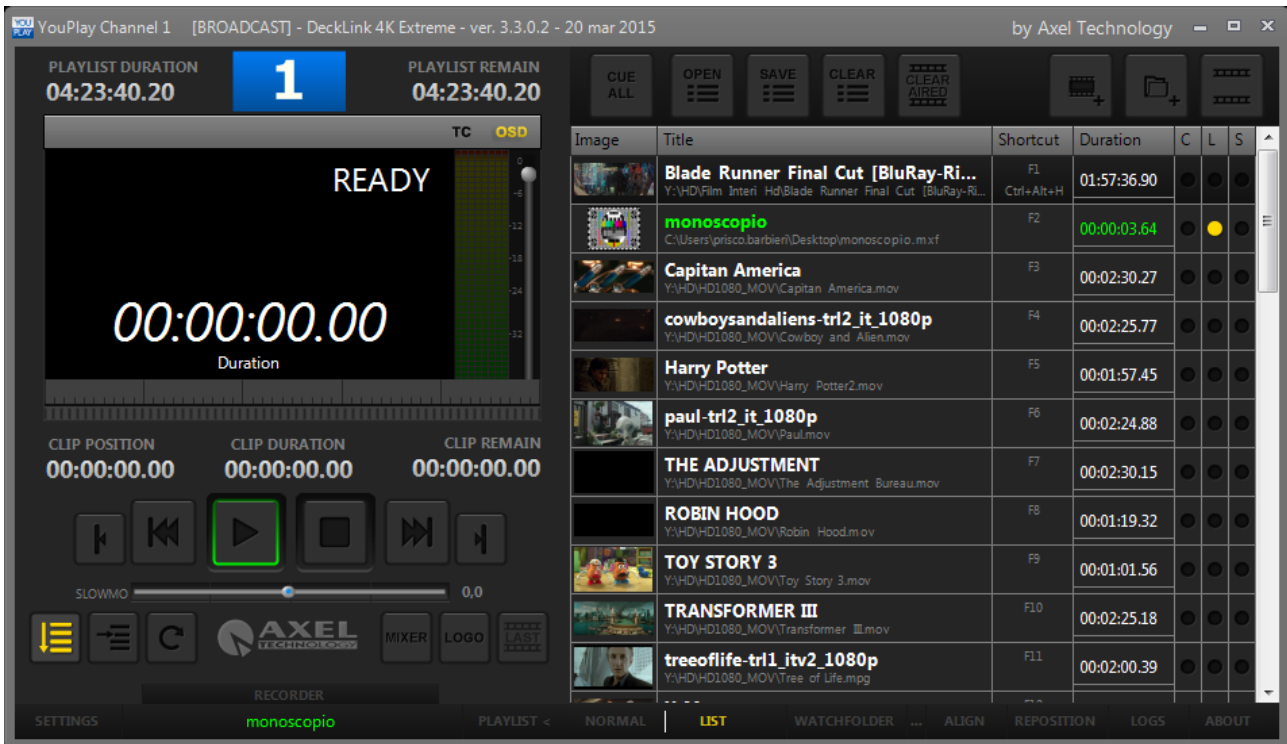


Clicking on PLAYLIST the screen will change showing the playlist module

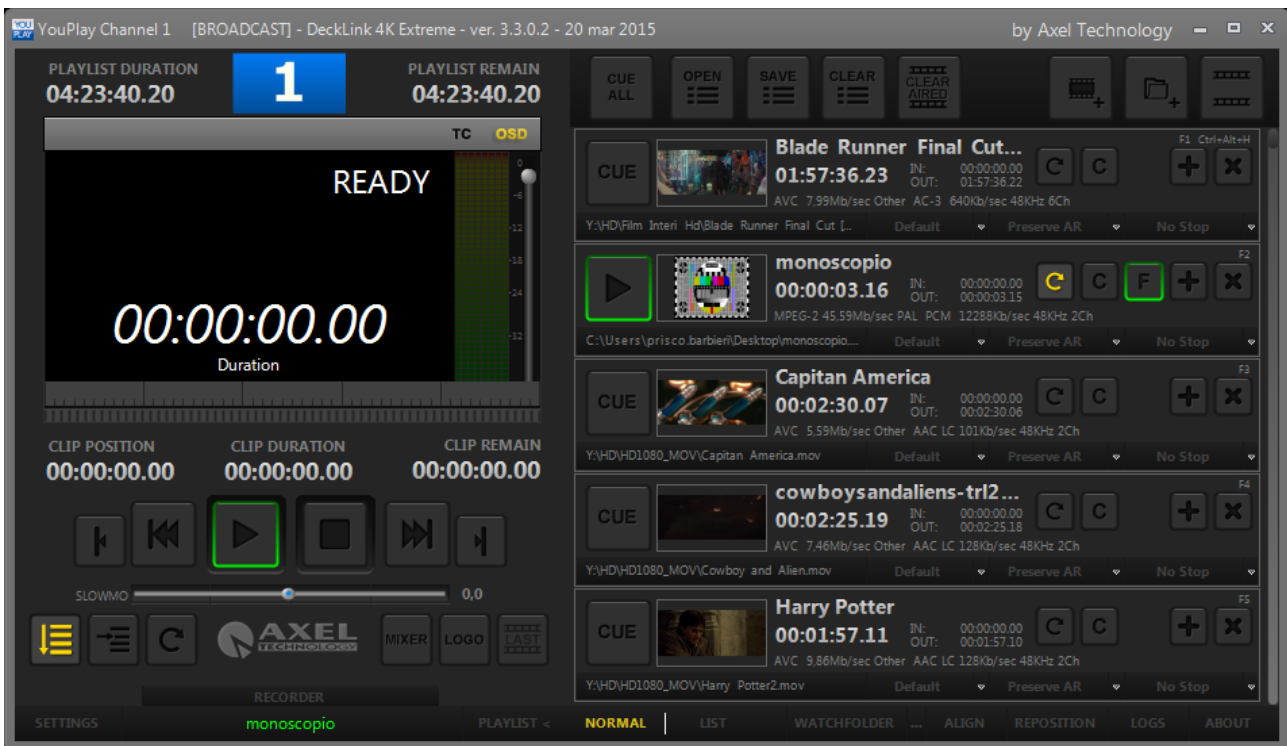


It is possible to choose between two different playlist displays: NORMAL and LIST.

The following image shows the LIST display:



The following image shows the NORMAL display:





It is possible to run multiple instances of YouPlay also if the dongle contains only one licence. The main instance will be the playout, while the other instances can be used to preview (on VGA) and edit clips that

can be dragged and drop into the main playout after editing (keeping the mark in and mark out points set on the second instance).

2.2 HOW TO INSERT A CLIP ON THE PLAYLIST

There are four different ways to add a clip to the list:

1. Click on the  button, then browse the clip in windows mode
2. Open the clip folder, then drag and drop it into the playlist space (right part of the screen)
3. Open the clip folder, then drag and drop it on the preview space (left part of the screen)
4. Use the APPEND CLIP button . WARNING: the APPEND CLIP button will put the clip AT THE END of the playlist
5. Drag and drop from another YouPlay instance (If you keep pressed the CTRL, the clip will be copied and past, otherwise the clip will be moved)

2.3 PLAYLIST MANAGEMENT OPTIONS

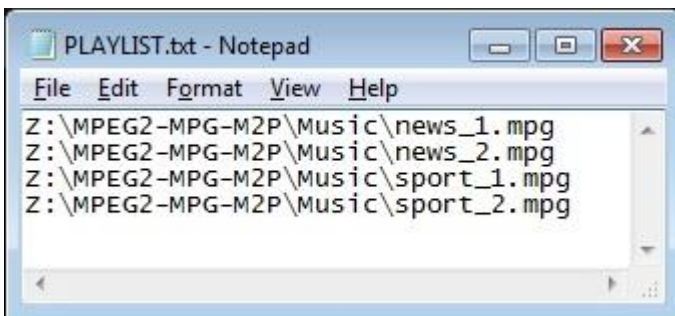


Open a previously saved playlist

The playlist format that can be used with YouPlay are:

.TXT – It is possible to edit manually the playlist using a notepad and listing the paths of the clips

Example of a .TXT playlist:



.LST – Playlist format by YouPlay. When you save a playlist with YouPlay, it will be in .LST format

.XSC – Playlist made with Xscheduler (scheduler software of XTV suite by Axel Technology)

.FCPXML – Playlist made with Final Cut Pro

.XML – Playlist made with Final Cut



Save the playlist currently on YouPlay



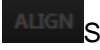
Delete all the clips from the current playlist



If enabled, when a clip will be played, it will be deleted from the playlist



Add the entire content of a folder to the playlist



Shows as first element of the playlist the one currently on air

It is possible to set a WATCHFOLDER, that is a folder where you can constantly check the presence of new clips and insert them quickly. WATCHFOLDER is very useful to add new contents to a program (e.g. newscasts) after a few minutes that the clip is recorded.



If enabled, checks the presence of new files on the WATCHFOLDER.



Use this button to set the WATCHFOLDER path



When this button turns into yellow, it means that there are new clips on the WATCHFOLDER. Clicking on this button all the new clips inside the WATCHFOLDER will be inserted on the playlist.

NB The clips can be moved inside the playlist using drag and drop.

2.4 HOW TO PREPARE A CLIP TO BE PLAYED



All the clips with the green button are ready to be played. The different colours give information about the state of the clip:
 GREEN = Ready
 YELLOW = Preparing
 RED = Error



To prepare a clip ready to be played, click on the CUE button. The CUE button will change into PLAY button to show that the clip is ready to be played.



It is possible to prepare ALL the clips of the playlist by enabling the button CUE ALL. WARNING: Preparing ALL the clips will cause a larger use of memory and the system could become slower.



It is also possible to select some clips to be ready by clicking on the C button.

2.5 CLIPS OPTIONS

Here a description of all the options that can be applied to the clips on the playlist



Breakfast In America ... Name of the clip

00:02:37.06 Length of the clip

MPEG-2 7.63Mb/sec PAL MPEG Audio Layer 2 224Kb/sec 48KHz 2Ch Multimedia info

Y:\Clip Musica \Breakfast_In_America_4560.m ... File path

00:00:00.00
00:02:37.05 Mark In and Mark Out



Loop mode. The clip will be played continuously.



Cue mode. The clip will always be ready to be played.



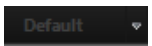
First Frame. This button appears only if the clip is ready to be played. It allows to put on air the first frame.



Insert a new clip.



Delete the clip from the playlist.

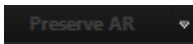


The DEFAULT button will open the following menu:

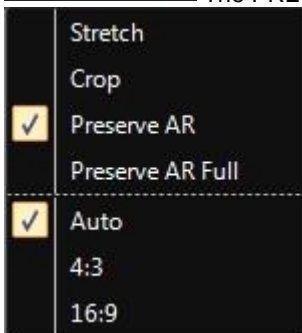


Use this menu to define the clip FIELDS.

NB: It is possible to change the fields of the clip while the clip is on air

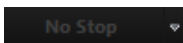


The PRESERVE AR button will open the following menu:

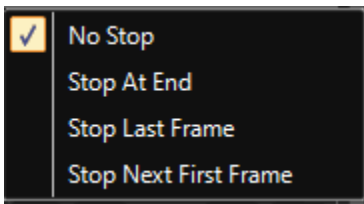


Use this menu to modify Aspect Ratio and Stretch Mode of a single clip without changing the default settings of your TV station.

NB: It is possible to change Aspect Ratio and Stretch mode of the clip while the clip is on air

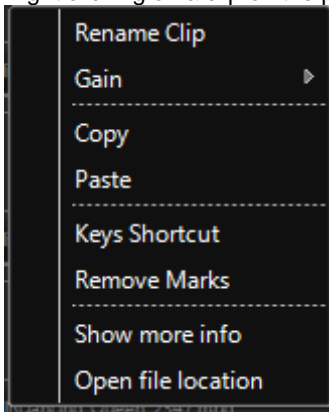


The NO STOP button will open the following menu:



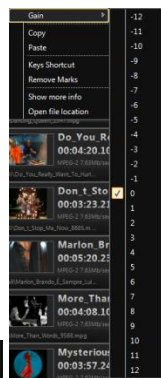
Use this menu to choose how to stop the clip

Right clicking on a clip on the playlist, it will show the following menu:



Rename Clip

Rename a clip



Gain

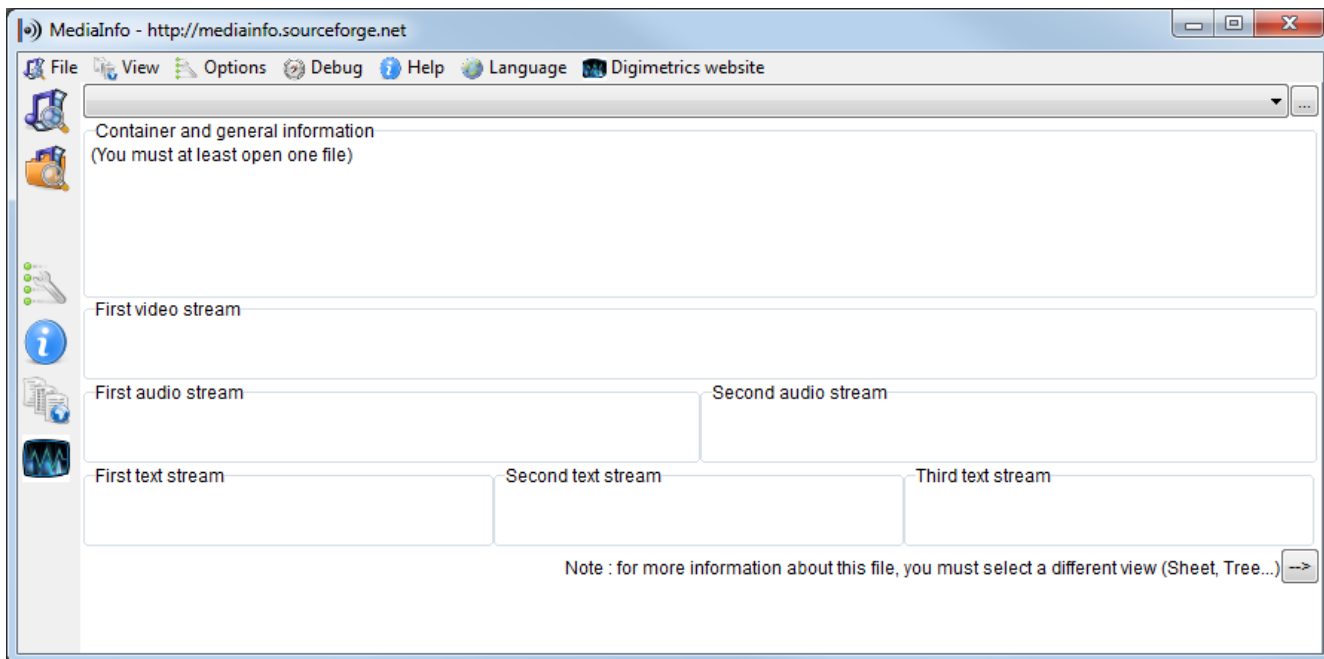
choose the gain level for the volume

Copy
Paste

Copy or past a clip

Show media info

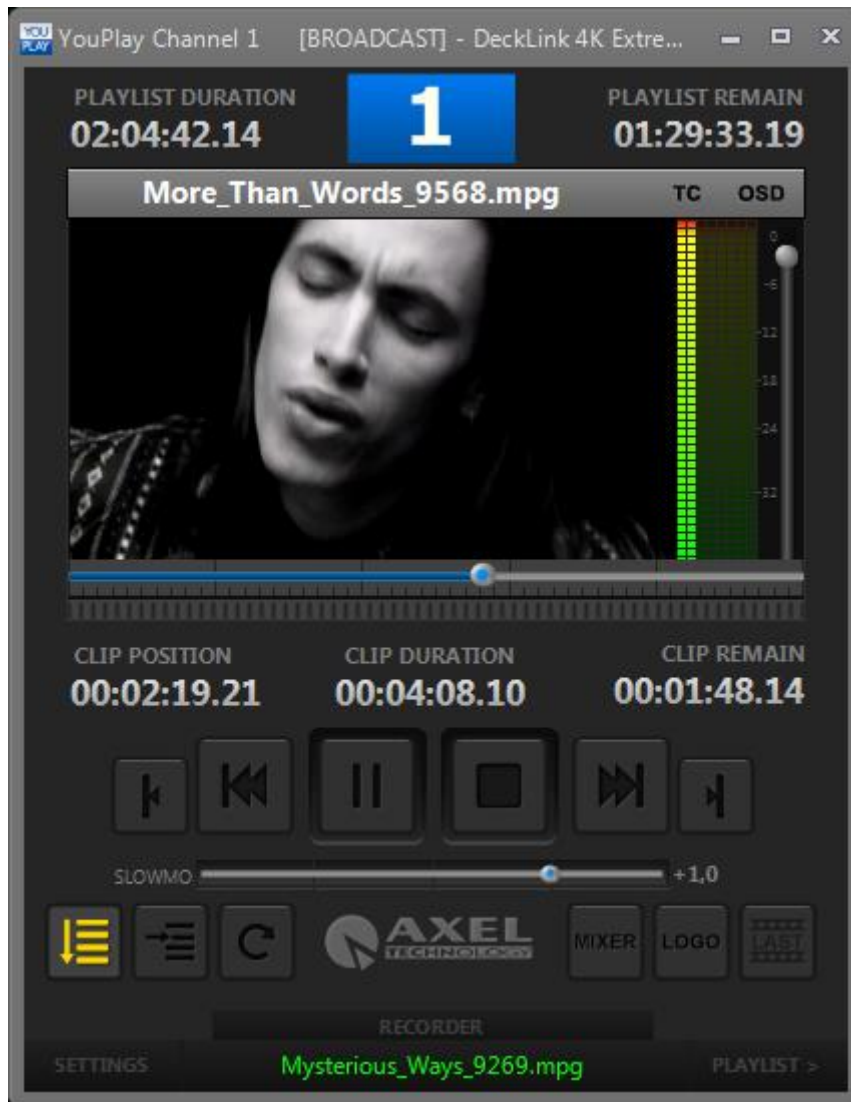
This option will show all the info about the clip



Open file location Open the folder where the clip is located.

2.6 *PLAYOUT OPTIONS*

On the left of the screen there is the playout panel.



The playout options are:



Clip preview. Double click on the preview will run the clip on

Windows Media Player



Play the clip. This button will change into PAUSE while the clip is playing.



Stops the clip while playing.



Back to the previous clip/restart clip. NB: If you click this button before 3 seconds from the start, it comes back to the previous clip, after 3 seconds it will restart the current clip.



Go to the next clip.



Set mark in point.



Set mark out point.



Allows to play the clip slower or faster.

Move the cursor to the left (for slower play) or to the right (for faster play). To come back to the normal speed, click on the PLAY button.



Applies the changes to mark in and mark out.



Remove markers.



If enabled, plays the whole playlist continuously, but always respecting the stop mode set on the single clips.



If enabled, it will stop playing at the end of the clip. WARNING: when this function is enabled, all the stop mode of the clips will be disabled and the No Stop option on the clips will be hidden.



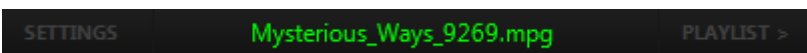
Loop mode. The clip will be played in loop until the clip will be stopped or the One At a Time mode will be enabled.



Show or hide the logo (see SETTINGS to know how to set a logo).



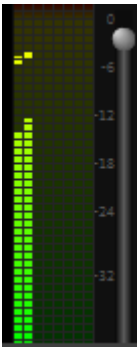
If enabled, it stops the clip on the last frame. NB It can be enabled only if One At a Time mode is enabled.



Shows the next clip on the playlist

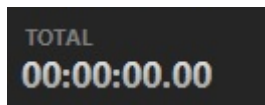


Playout cursor. It is possible to move it to search a particular point on the clip.

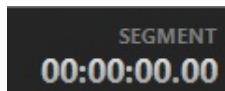


Realtime Volume Control. It is possible to change the volume of the clip even if the clip is running, moving the cursor up or down.

2.7 RECORDER OPTIONS



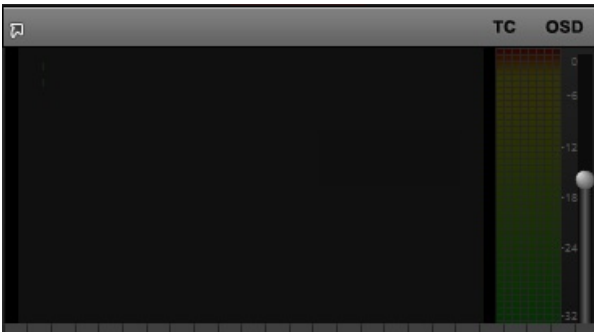
This is the current point of the clip



This is the duration from the start of the current segment, after

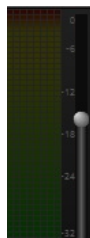


the presson of the button



Monitoring area of the current REC

OSD= Total Time and recording state.
 TC = TimeCode. Enable the visualization of the TimeCode in the capture
 By clicking on the time label, you can change between Segment Duration or Total Duration



Change or correct the audio level of the current clip in rec.



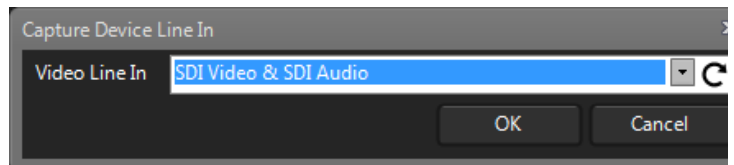
Dropped frames. The Max value is settable from settings

IDR	ADR	LEFT TIME	LEFT DISK
0.00 Mbs	0.00 Mbs	0s	0.0 Kb

Recording parameters
 IDR = Instant
 ADR = Average



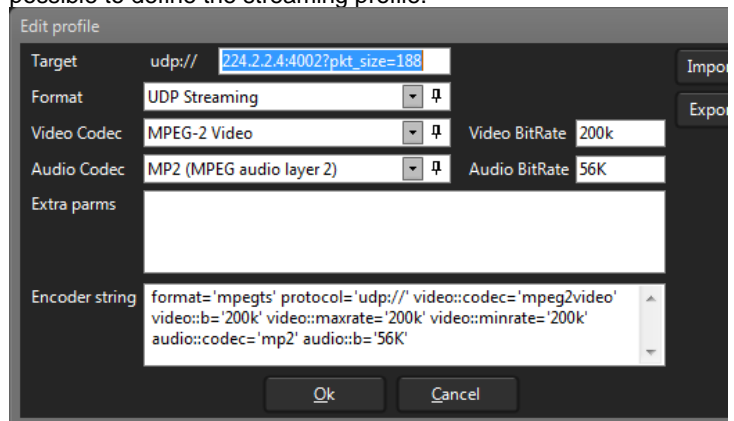
If NDI is enable, it is possible to choose the Video Line-In.



Allows to listen the audio of the rec from the default Windows audio card.



Adds an IP stream.
 By clicking the gear you can open the setting form where is possible to define the streaming profile.





The Switch button creates a new video segment and close the previous one.

Starts the recording

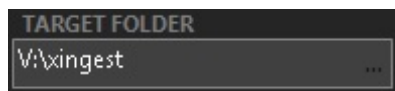
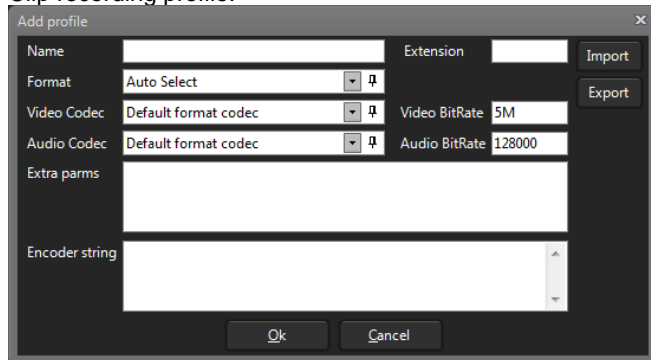
Stops the recording



Name of the clip



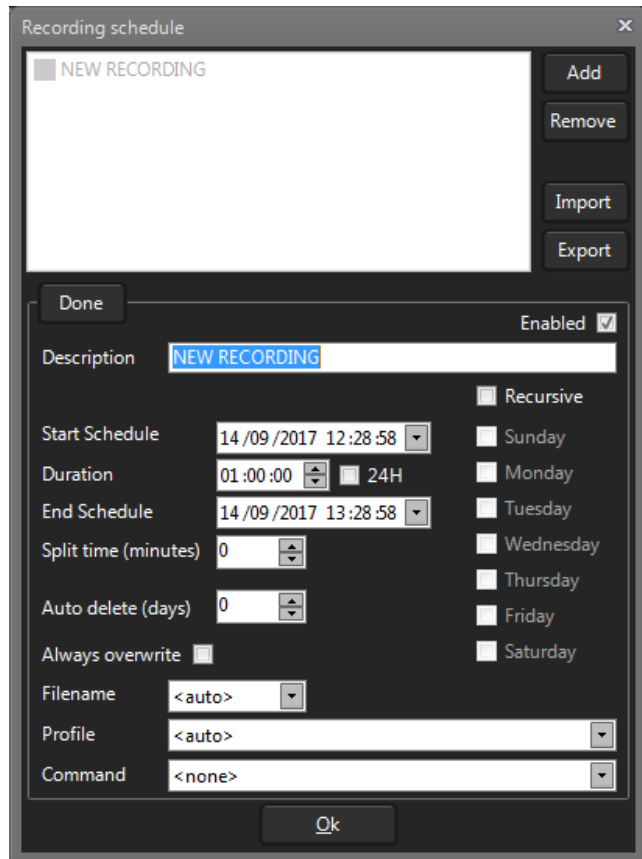
Clip recording profile.



Target folder of the clip. The clip will be saved in this path.



Set a schedule and if it is pressed enable the schedule.



Add	Adds a schedule
Remove	Removes the selected schedule
Done	Confirms the changes on the schedule
Enabled	Decides if the selected schedule is enable.
Start Schedule	Decide the day and the hour of the start of the schedule. If recursive is enabled, defines only the starting time of the schedule
Duration	Define the Duration of the schedule. If selected 24H, the duration is 24 hours.
End Scheduler	Define the day and the hour of the end of the schedule. If Recursive is enabled, define the hour of the end of the schedule.
Recursive	Define if the schedule is recursive. If it is enabled it is possible to select the days of the week.
Split time (minutes)	Further than this minutes a new capture segment will be created.
Auto delete (days)	Further than this days the oldest clips will be deleted on the recording folder.
Filename	If <auto> the schedule records the clip with default file and folder. If Folder, the folder in which you want to record will be

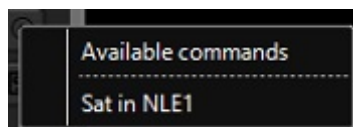
	requested and the file name will be assigned by default. If File, the name of the file to be recorded will be requested and the folder will be assigned by default. If Custom, a file in LTC UTC format and duration will be created in the default folder.
Profile	If <auto> the schedule records the clip with the capture profile by default. Otherwise the selected profile will be used.
Command	If <none> the schedule records without sending any commands, otherwise the selected command will be sent at the capture start.



Snapshot of the current recording.



Send commands



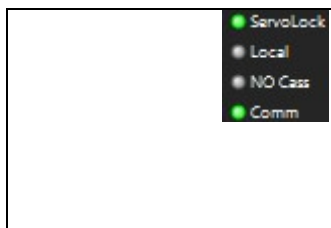
Available commands



If available, connect a video recorder



		Eject the tape from the connected video recorder
		Rewind the tape in the connected video recorder
		Play the tape in the connected video recorder
		Fast forward of the tape in the connected video recorder
		Stop the playback of the tape in the connected video recorder.
		Control for the fast forward or the rewind of the tape. The bottom button controls the jog/shuttle operativity. Jog is fine strokes - generally moving in increments of a frame Shuttle is broad strokes - you turn the wheel a little and depending how far you turn you go faster and faster up to many times real-time.

	<p>Servolock: the tape is in playback</p> <p>Local: it is impossible to control the videorecorder from this panel</p> <p>No Tape: the tape is not present.</p> <p>Comm: No vcr is connected</p>
--	---

SETTINGS

Opens the settings

STATS

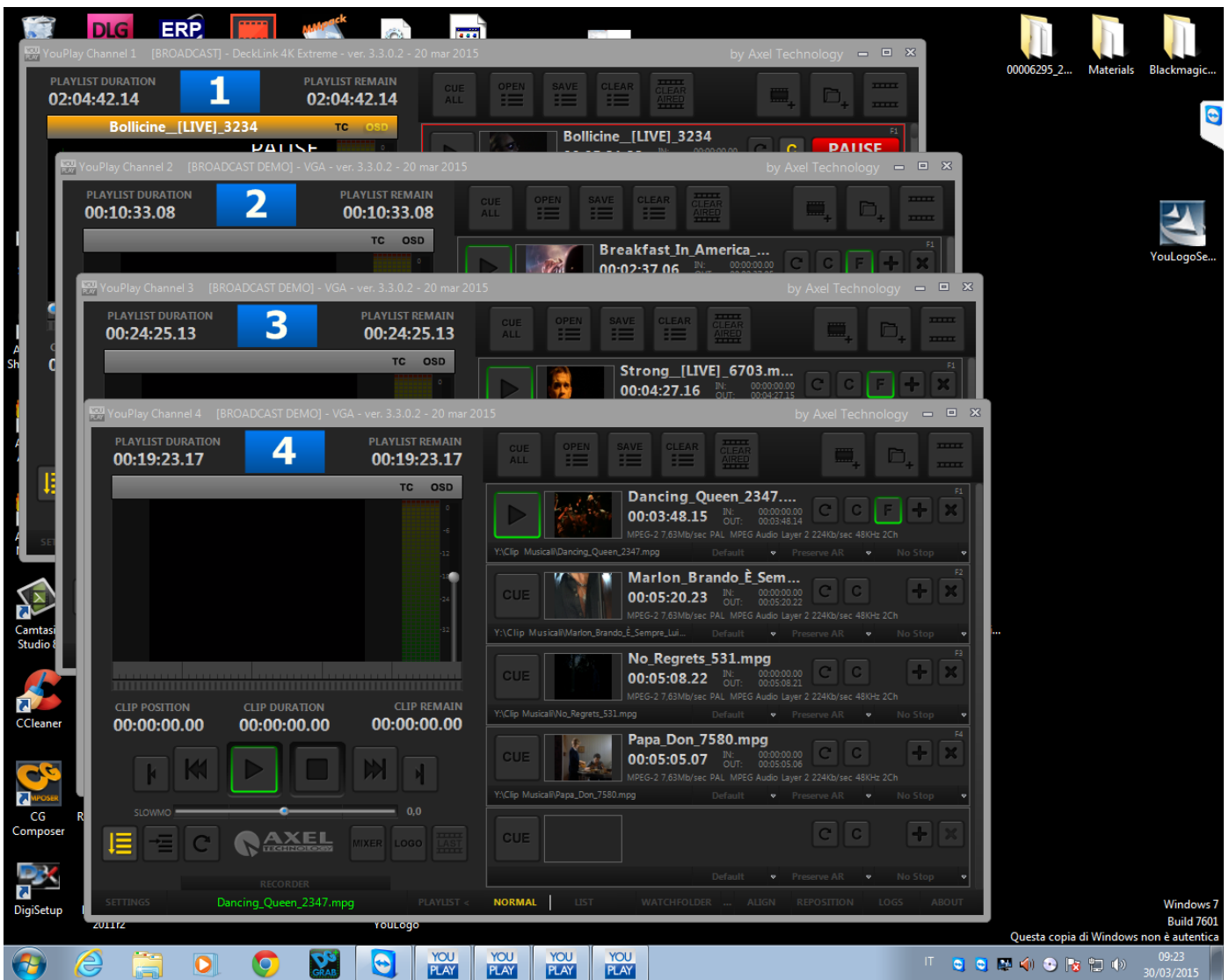
Opens the statistics

PLAYLIST >

Opens or closes the right panel with the playlist

3 MULTICHANNEL

YouPlay can play up to 4 different channel on the same pc.



REPOSITION The reposition button will divide the screen into 4 parts and reposition the multichannel windows as in the following image:

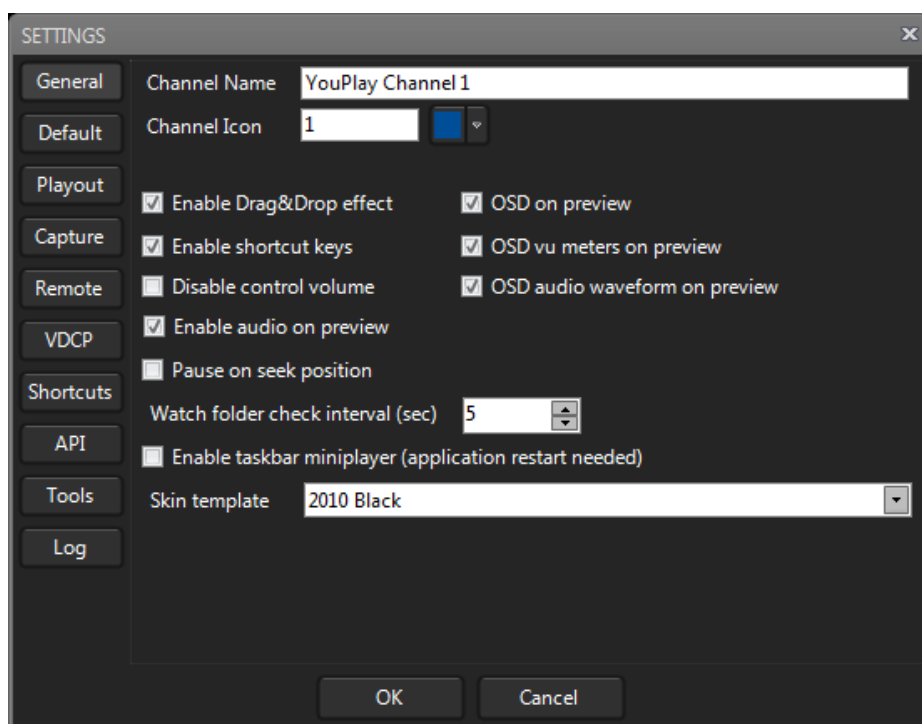
The image displays a multi-channel video production software interface, likely Axel Technology's software, showing four channels (1-4) of a broadcast. Each channel has a main playback area and a playlist area. Channel 1 is paused on 'Bollicine [LIVE] 3234'. Channel 2 is on 'Breakfast In America...'. Channel 3 is on 'Strong [LIVE] 6703.m...'. Channel 4 is on 'Dancing Queen 2347...'. The interface includes various playback controls like play, stop, and fast forward, as well as a 'RECORDER' section. The bottom of the screen shows a Windows taskbar with the date 30/03/2015 and time 09:28.

4 SETTINGS

Click on the **SETTINGS** button to configure YouPlay.

There are ten different settings panels: General, Default, Playout, Capture, Remote, VDCP, Shortcuts, API, Tools, and Log.

4.1 GENERAL



Channel Name Name of the channel that will be shown on YouPlay

Channel Icon Icon on YouPlay GUI. It is useful on multichannel mode to distinguish the channels.

Enable Drag&Drop effect Enables graphics effects during drag and drop actions

Enable shortcut keys Enables the use of shortcut keys

Disable control volume Disables volume control

Enable audio on preview Enables audio in Preview

Pause on seek position When you search for a position, then youplay pause on seek position

OSD on preview OSD(On Screen Display) on preview

OSD vu meters on preview OSD(On Screen Display) vu meters on preview

OSD audio waveform on preview OSD(On Screen Display) audio waveform on preview

Watch folder check interval (sec)

Set the time interval (in seconds) to check if something changed inside the Watch Folder

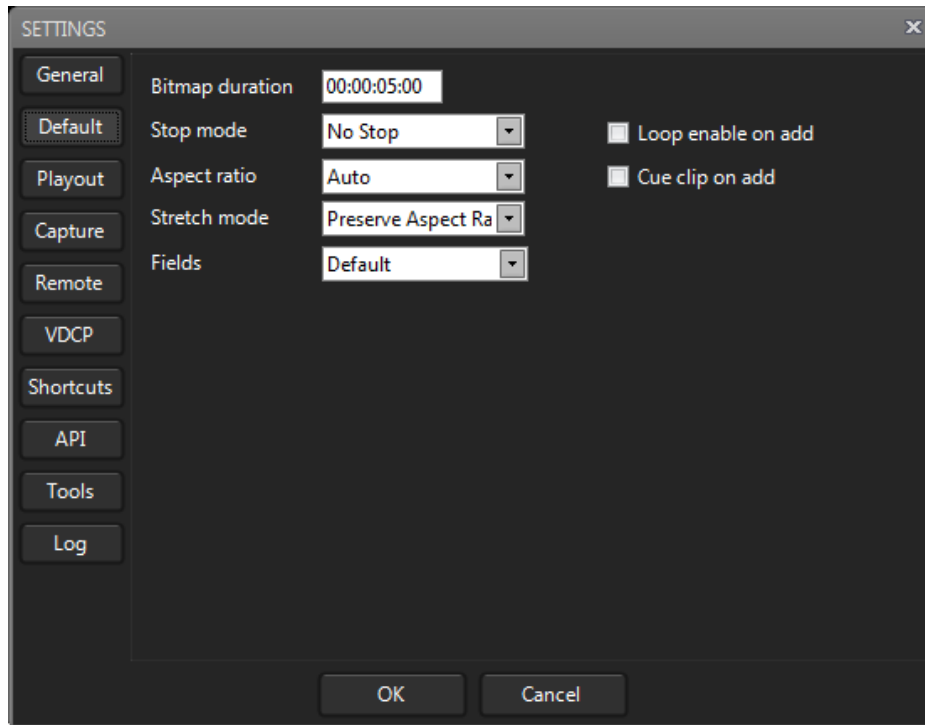
Enable taskbar miniplayer Enable DWM

(see http://en.wikipedia.org/wiki/Desktop_Window_Manager for details)

Skin template

Change the YouPlay skin.

4.2 DEFAULT



Bitmap duration

Changes the time for the Bitmap Duration

Stop mode

Changes the way for the stop mode

Aspect ratio

Changes the ratio for the Aspect ratio

Stretch mode

Changes the option for the stretch mode

Fields

Changes the position for the fields

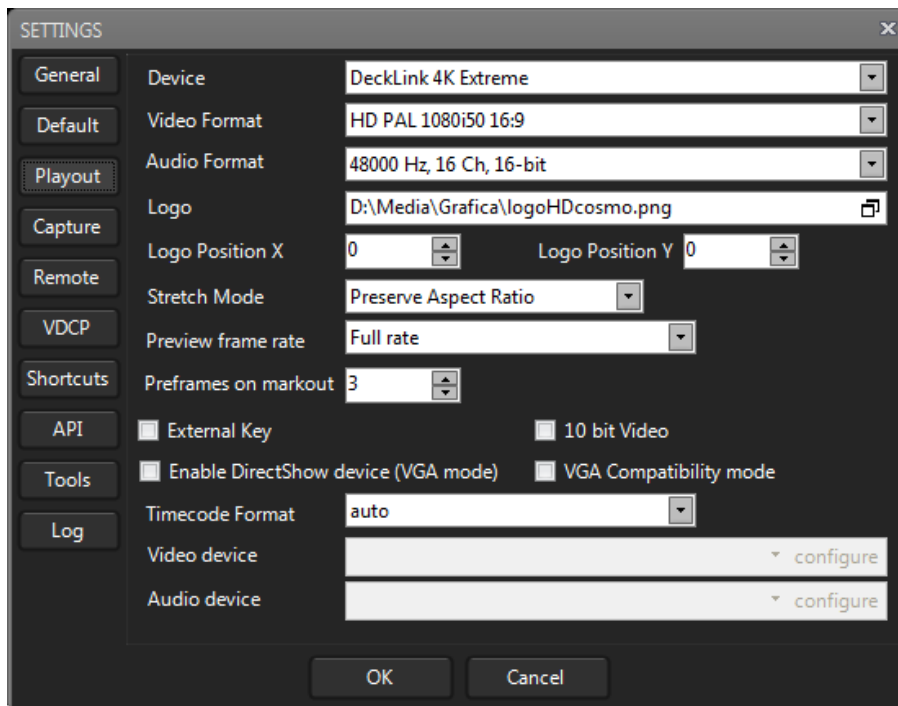
Loop enable on add

enables or disables the loop on add

Cue clip on add

enables or disables the cue clip on add

4.3 PLAYOUT



Device Set output device (e.g. Blackmagic)

Video Format Set video format

Audio Format Set audio format

Logo Set the station logo that can be enabled on playout panel. NB The allowed formats are: .bmp, .jpg, .tga, .png, .swf,
*

Logo Position X **Logo Position Y** Logo position (if not set with Axel CG)

Stretch Mode Default settings for Stretch Mode (it is possible to set different Stretch mode on the single clips, see Clip Options section).

Preview frame rate sets the frame rate for the preview

Preframes on markout Set how many frames before markout it will switch to next clip.

External Key If enabled sets Blackmagic output on RGB 32 with fill and key separated (if the video card can support it). E.G. for SD BM Studio 2, for HD BM 4k.

Enable DirectShow device (VGA mode) If enabled, it creates a direct show virtual device to allow the connection of YouPlay to any other card (e.g. Aja). This mode is active only if Device = VGA.

10 bit Video sets di video in a bitrate of 10 bit

VGA Compatibility mode Change the video preview in order to be compatible with particular remote connection software(e.g. remote Desktop)

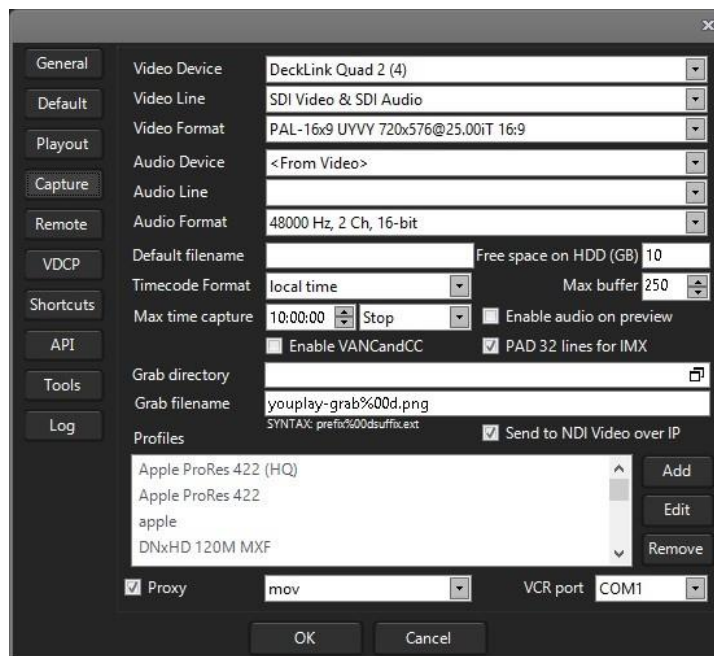
Timecode Format sets the timing synchronization format of the timecode

Video device Set external video device

Audio device Set external audio device

4.3.1 *LOGO .ACG FORMAT(ONLY YOUPLAY BROADCAST & YOUPLAY SERVER
 .acg(Axel CG composer projects, see <http://www.axeltechnology.com/product.php?id=17> for more information)

4.4 CAPTURE(ONLY YOUPLAY SERVER)



Video Device Defines the capture video device

Video Line Defines the video-line (in NDI mode it shows the list of all available streams)

Video Format Defines the recording video format (SD, HD, 2K, 4K, PAL or NTSC)

Audio Device Defines the capture audio device

Audio Line DefinesDetermina l'audio line-in

Audio Format Defines the capture audio format (2..16 Ch, 16, 32, 64bit)

Default filename Defines the default name of the recording

Free space on HDD (GB) Further than this free hard disk space the recording will be stopped.

Timecode Format local time

Defines the TimeCode format.

Max buffer 250

Defines the maximum buffer of the recording

Max time capture 10:00:00 Stop

Further than this time the Stop rule will be applied (the recording will be stopped) or the Split rule will be applied(a new segment will be created and the recording continues)

Enable audio on preview

Enables the audio on the preview.

Enable VANCandCC

Enables the Closed Caption on the captured video

PAD 32 lines for IMX

Applies on the captured video a 32 lines PAD (a little panel of 32 pixel high on the top of the video) for the IMX formats.

Grab directory

Defines the target folder of the grabbed pictures.

Grab filename youplay-grab%00d.png
SYNTAX: prefix%00dsuffix.ext

Defines the filename of the snapshot in the shown syntax.

Send to NDI Video over IP

Enables the NDI over IP stream of the recorded clip.

Apple ProRes 422 (HQ)
Apple ProRes 422
apple
DNxHD 120M MXF

Add
Edit
Remove

Adds, Edits, Removes the captured profiles present on the PC. These changes are the same for all the XIngest instances.

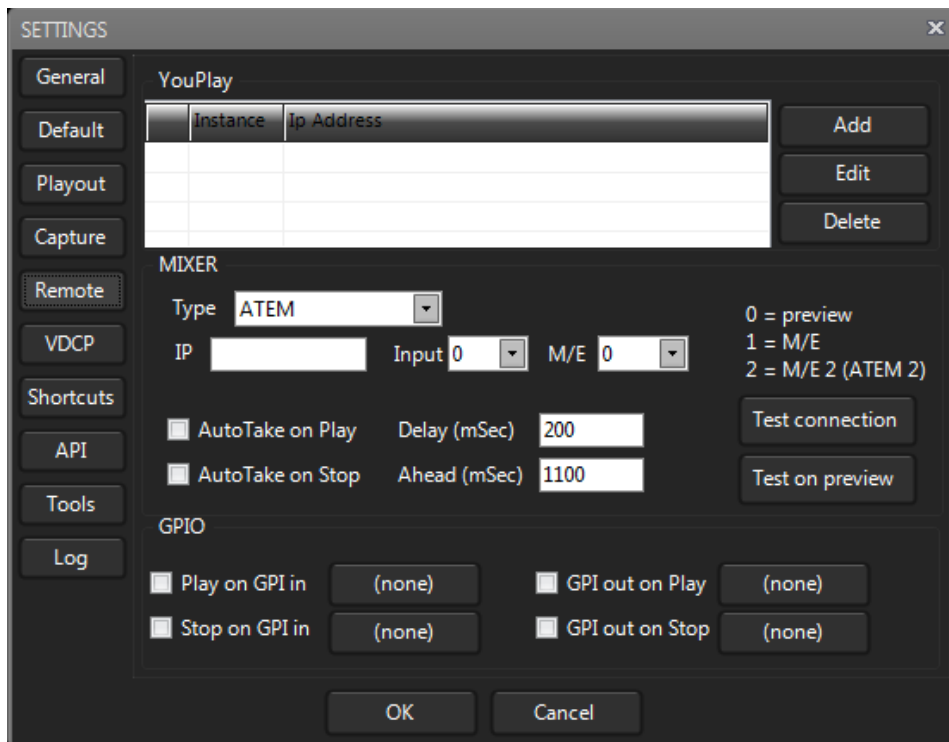
Proxy mov

It enables the video proxy of the recorded clip with the selected profile. If the same capture profile is used, the “_proxy” suffix will be applied.

VCR port COM1

Defines the RS422 COM port of the available external VCR. If <none> is selected no VCR will be initialized in the home page.

4.5 REMOTE(ONLY YOUPLAY BROADCAST & YOUPLAY SERVER)



The Remote Settings panel manages the settings of the ATEM (Blackmagic Mixer).
 NB: The ATEM Software Control must be previously installed on the YouPlay pc.



To add, edit or delete different instances for different mixers.

IP ATEM IP address

Input Input where YouPlay is connected

ME Selection to set mixer ME

AutoTake on Play Delay (mSec) If enabled, play and stop on the playout will give the command to

AutoTake on Stop Ahead (mSec) the ATEM cursor with the delay set.

Test the connection with ATEM

Test the switch command on ATEM preview channel

GPIO

Play on GPI in (none)
 GPI out on Play (none)

Stop on GPI in (none)
 GPI out on Stop (none)

GPO commands from playout to external device (e.g. relay contact) and from external device to playout (e.g. tally from mixer)

It is possible to set two different devices: MOXA and RS232.

GPIO

Device: MOXA

Is Counter Password: _____

IP Address: _____

Port: 502 Timeout: 5000

Channels: 6 Ch 0 Ch 1 Ch 2 Ch 3 Ch 4 Ch 5

OK

GPIO

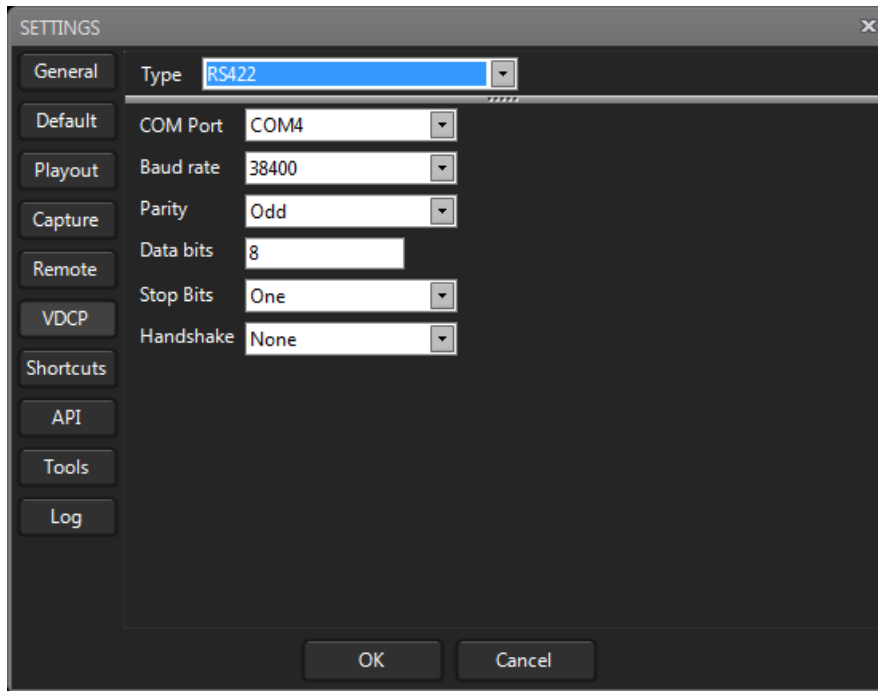
Device: RS232

COM Port: _____

CTS DSR

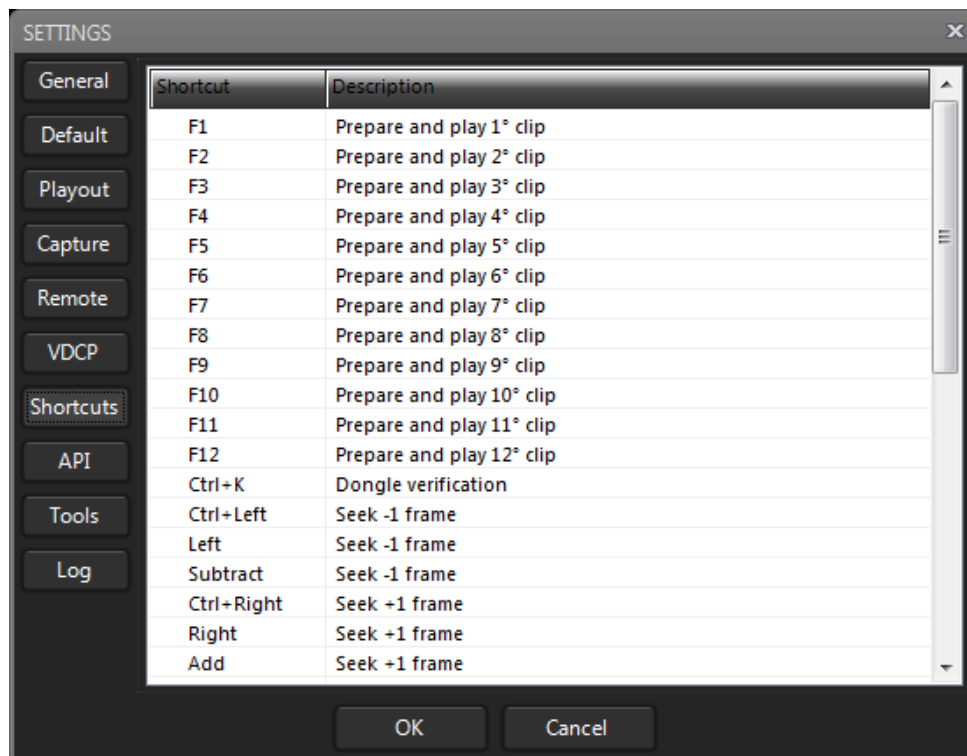
OK

4.6 VDCP(ONLY YOUPLAY BROADCAST & YOUPLAY SERVER)



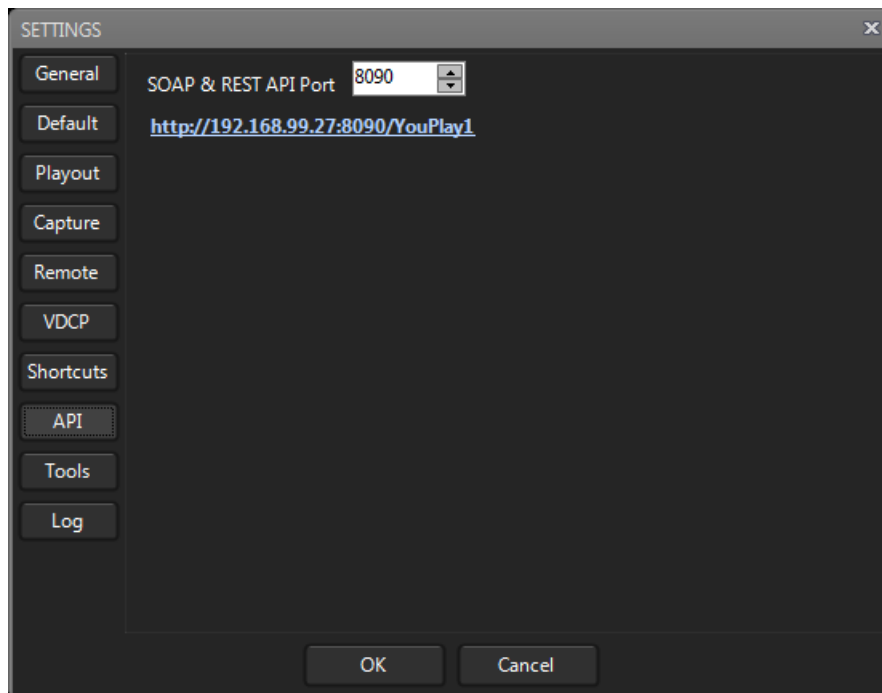
The Vdcp setting panel is to control youplay by an external controller. In the picture all the related settings that you can change.

4.7 SHORTCUTS



List of shortcuts used by the application.

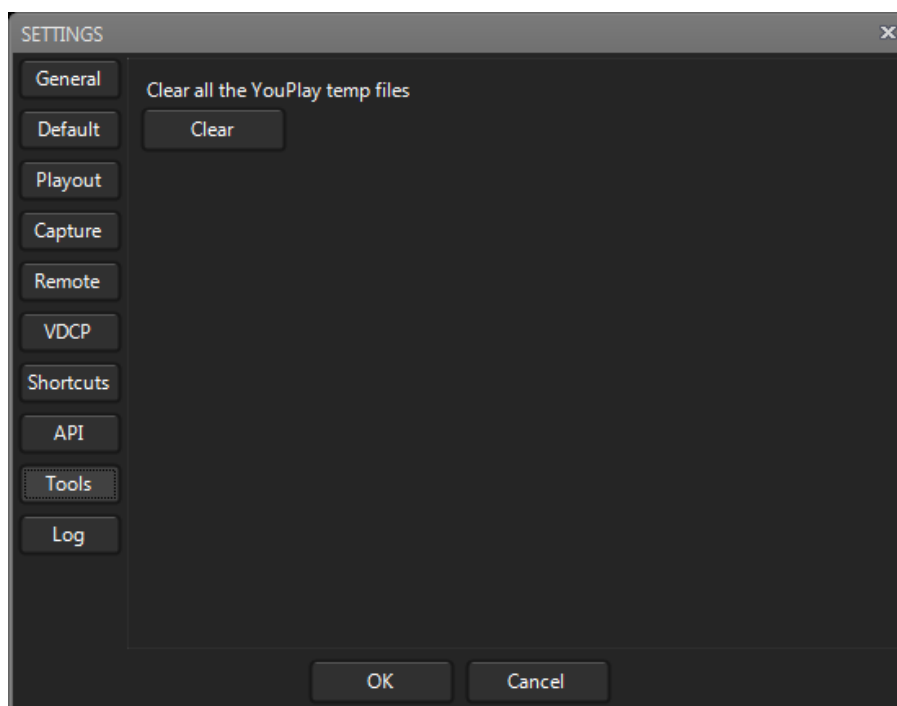
4.8 API(ONLY YOUPLAY BROADCAST & YOUPLAY SERVER)



SOAP & REST API Port TCP port used to expose webservices

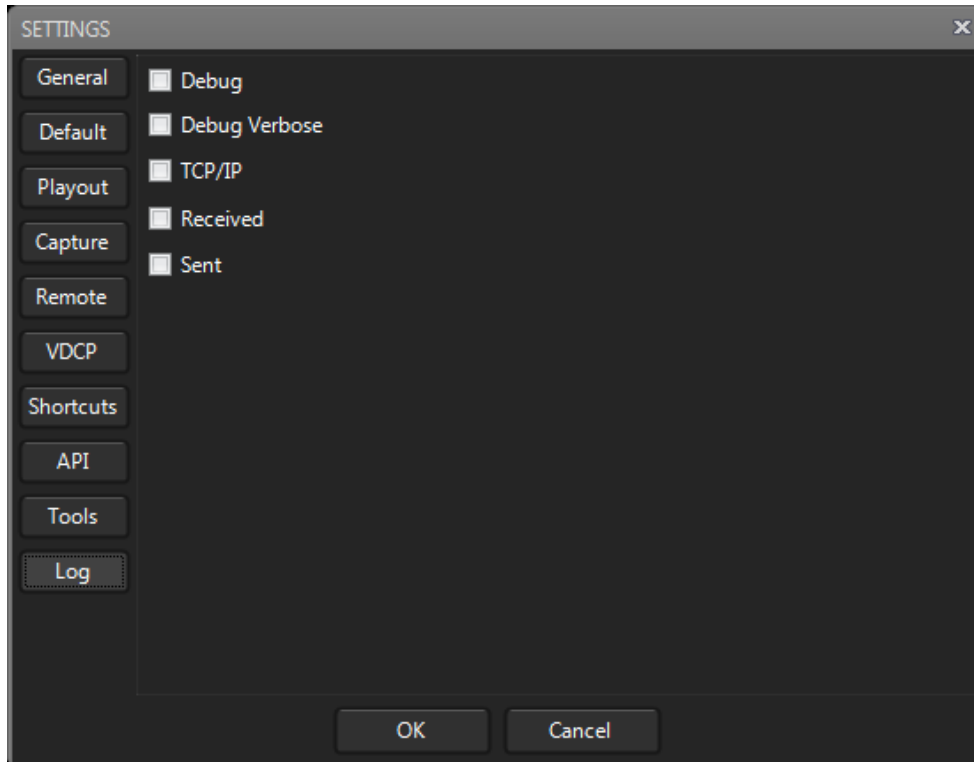
<http://192.168.99.27:8090/YouPlay1> Link to the webservice

4.9 TOOLS

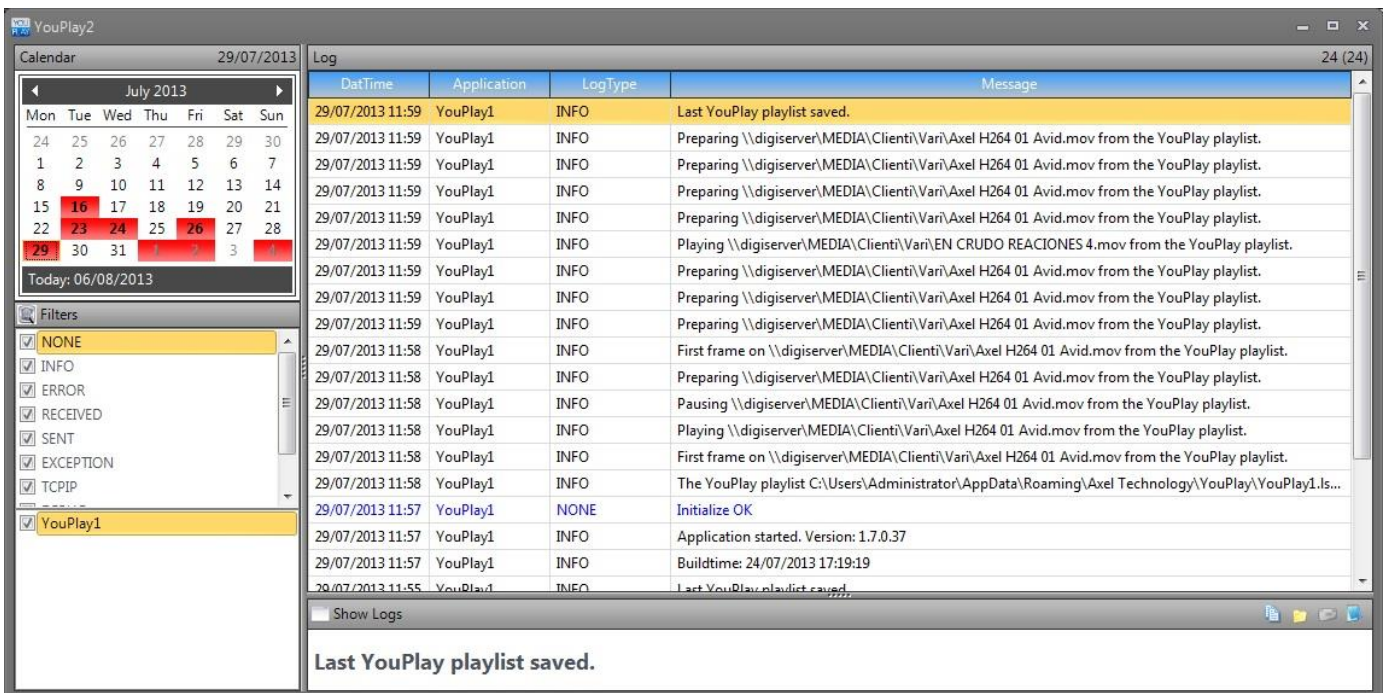


Tools setting panel is to clean all youplay temp files

4.10 LOG



On the Log setting panel it is possible to enable or disable the different logs available.



The Log panel allows to make searches with filters and select the day to be checked through a calendar.

4.11 ANALYSIS OF DAYLIGHT SAVING TIME (SUMMER TIME / WINTER TIME SWITCHING) MANAGEMENT

4.11.1 Recording (LTC UTC DURATION)

Schedule of the YouPlay recording in Custom Mode (LTC UTC DURATION)

Filename	Custom	LTC UTC DURATION
Profile	<auto>	
Command	<none>	

creates files with the following syntax:

o/x LTC-Date LTC-Time UTC-Date UTC-Time Duration TotalFrames Description.extension

o/x	->	o = file opened x = file closed
LTC-Date	->	Local Date format YYYY-MM-DD
LTC-Time	->	Local Time format HH:mm:ss
UTC-Date	->	Universal Date format YYYY-MM-DD
UTC-Time	->	Universal Time format HH:mm:ss.ff
Duration	->	File duration format HH.mm.ss.ff
TotalFrames	->	Total frames (FPS)
Description	->	YouPlay instance
Extension	->	File extension

Examples:

```
x 2017-03-24 02.00.00 2017-03-24 01.00.00.48 00.00.00.00 0000000 YouPlay1.mxf
x 2017-03-24 03.00.00 2017-03-24 02.00.00.48 00.00.00.00 0000000 YouPlay1.mxf
x 2017-03-24 04.00.00 2017-03-24 03.00.00.48 00.00.00.00 0000000 YouPlay1.mxf
x 2017-03-24 05.00.00 2017-03-24 04.00.00.48 00.00.00.00 0000000 YouPlay1.mxf
```

From winter time to summer time

When you have the switch between winter time to solar time, the recording continues without problem with the following result:

```
x 2017-03-26 02.00.00 2017-03-26 01.00.00.48 00.00.00.00 0000000 YouPlay1.mxf
x 2017-03-26 04.00.00 2017-03-26 02.00.00.48 00.00.00.00 0000000 YouPlay1.mxf
x 2017-03-26 05.00.00 2017-03-26 03.00.00.48 00.00.00.00 0000000 YouPlay1.mxf
x 2017-03-26 06.00.00 2017-03-26 04.00.00.48 00.00.00.00 0000000 YouPlay1.mxf
```

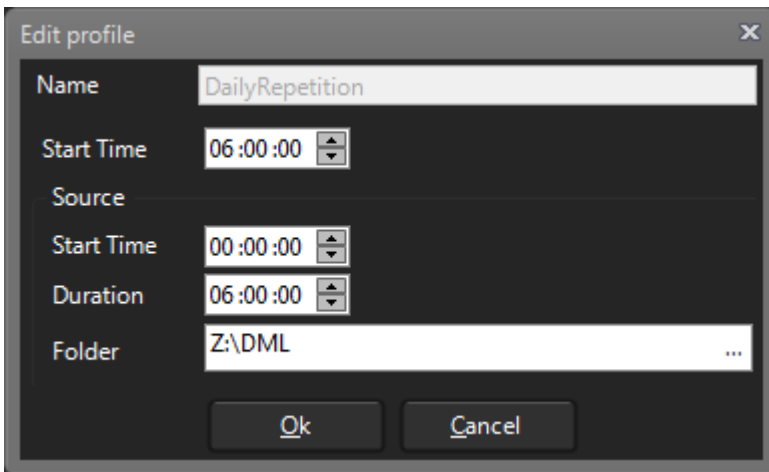
From summer time to winter time:

Instead, when you have the switch between summer time to winter time, the result will be the following one:

```
x 2017-10-29 02.00.00 2017-10-29 00.00.00.48 00.00.00.00 0000000 YouPlay1.mxf
x 2017-10-29 03.00.00 2017-10-29 01.00.00.48 00.00.00.00 0000000 YouPlay1.mxf
x 2017-10-29 03.00.00 2017-10-29 02.00.00.48 00.00.00.00 0000000 YouPlay1.mxf
x 2017-10-29 04.00.00 2017-10-29 03.00.00.48 00.00.00.00 0000000 YouPlay1.mxf
```

4.11.2 *Playout*

If you use the custom schedule DailyRepetition as shown in the following example:



YouPlay will scan the specified directory. It will look for files formatted in LTC UTC DURATION and it will look for Date and Time in UTC.

In this way the clips playout is managed in a transparent, continuative way without interruptions.

