



MARS 400(S) APP User Manual

Shenzhen Hollyland Technology Co.,Ltd

HOW to DOWNLOAD “HollyView” APP?



IOS System:

- Search for “HollyView” in App store.
- Download the App.

HOW to DOWNLOAD “HollyView” APP?



Android System:

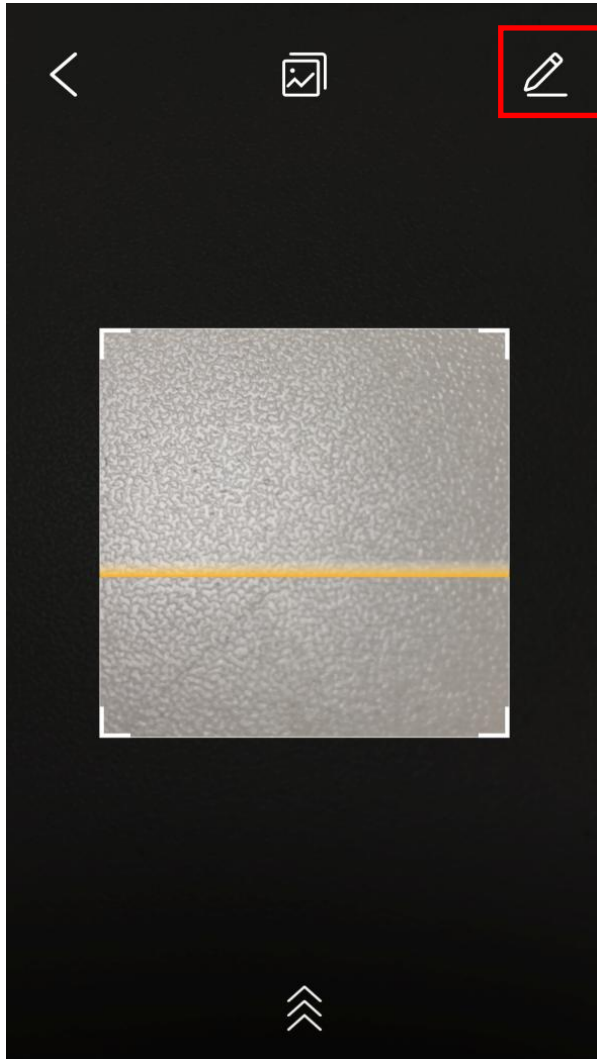
- Search for “HollyView” in Google Play store.
- Download the App.

APP MAIN INTERFACE

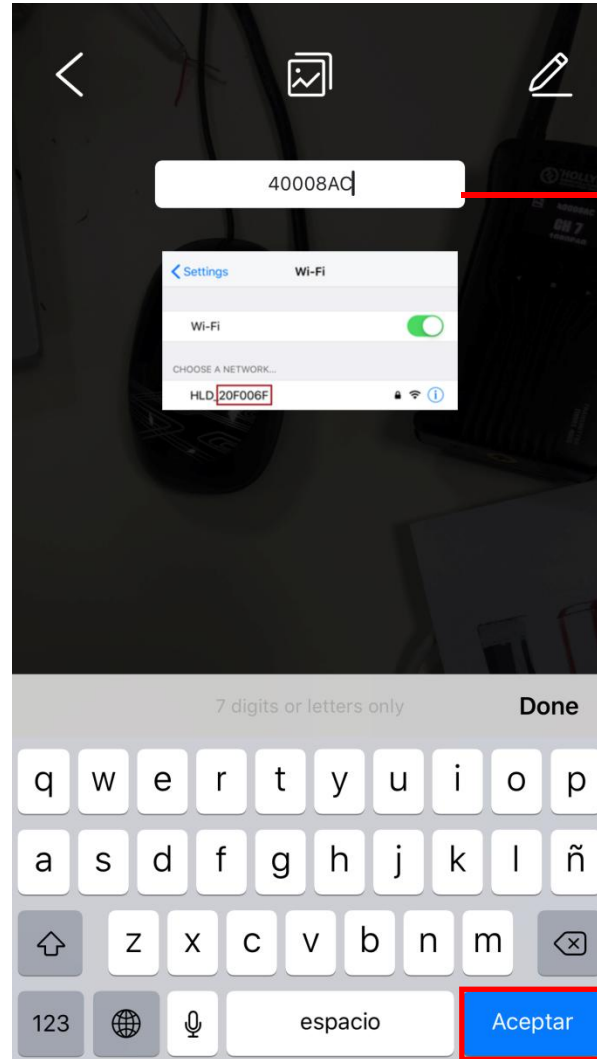


1. Click Connect button to connect device in Device
2. Check saved images and recorded video in Album
3. Select language setting and check APP version information in Me

HOW to CONNECT APP with MARS 400(S)?



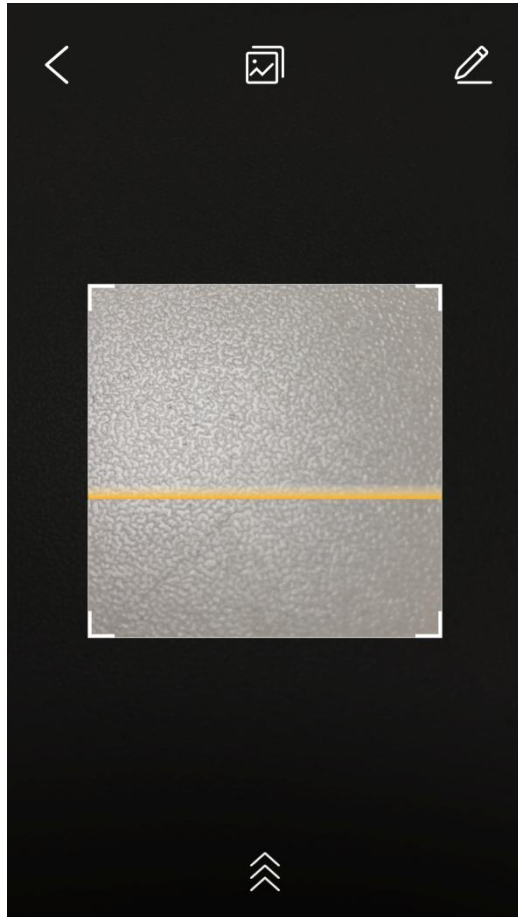
Click



Input the ID of Transmitter

Click “Aceptar” to get connection

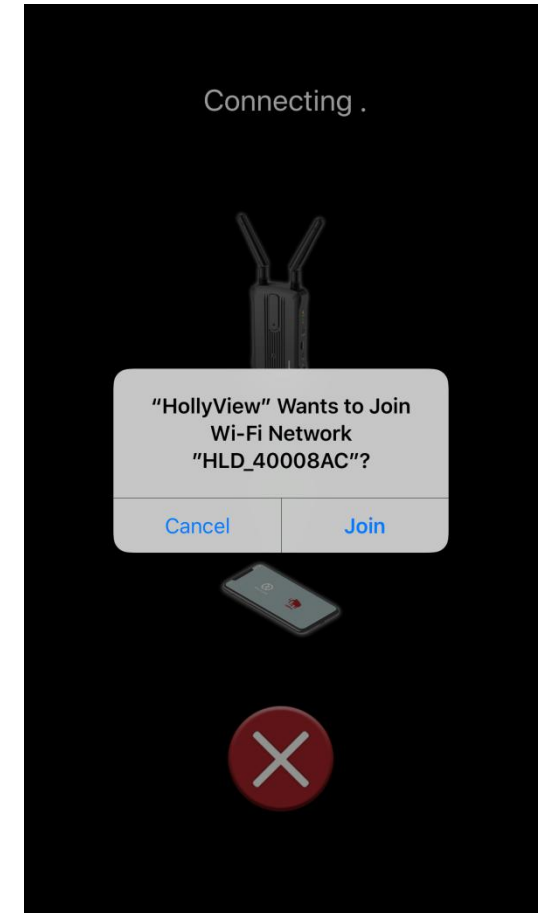
HOW to CONNECT APP with MARS 400(S)?



Please scan the QR code on the back side of Transmitter by APP



After scanning successfully, click “Join” to get connection



APP MAIN SCREEN INTERFACE



Back to Connect

Interface Locking

Function List

System Settings

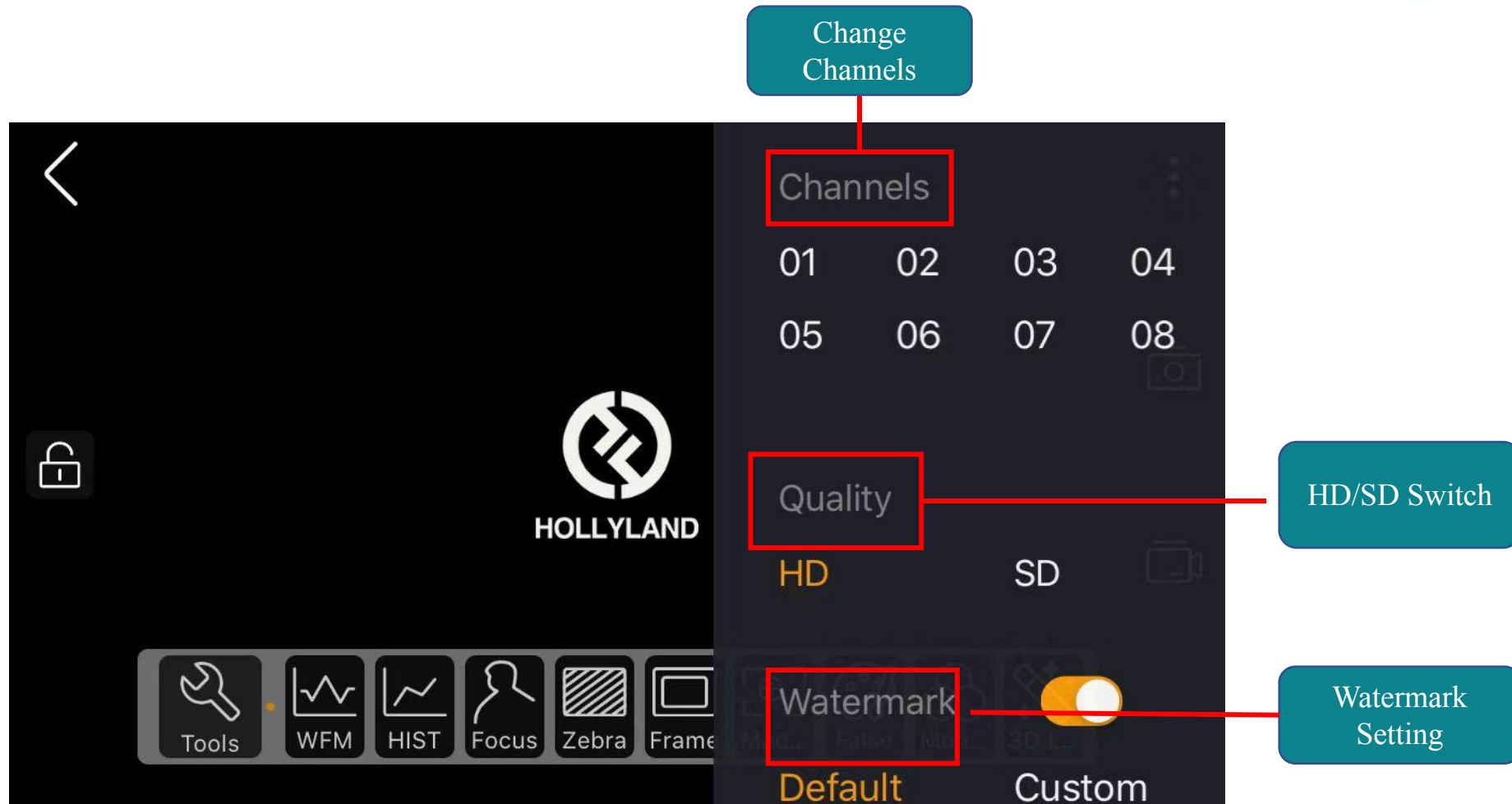
Screenshot

Recording

Click to enable this feature

Long press to enter function Settings

APP SYSTEM STEUO INTERFACE



The image shows a screenshot of the HOLLYLAND app's control interface. A dark overlay menu is open, displaying various settings. Three callout boxes with red lines point to specific features:

- Change Channels:** Points to the 'Channels' header at the top of the menu, which lists eight channel options (01-08) in a 2x4 grid.
- HD/SD Switch:** Points to the 'Quality' section, which has 'HD' selected and 'SD' as an alternative option.
- Watermark Setting:** Points to the 'Watermark' section, which includes a toggle switch currently turned on and two options: 'Default' and 'Custom'.

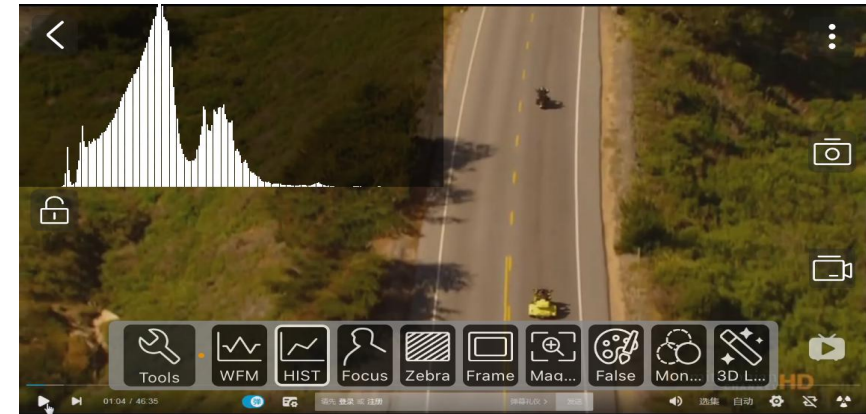
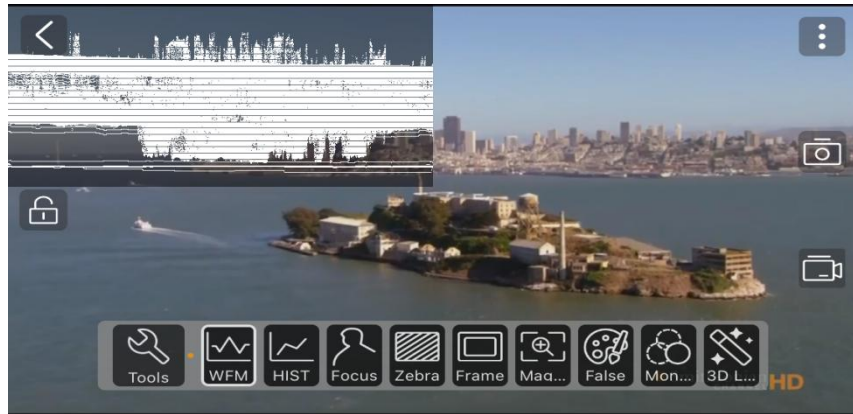
The background interface shows a back arrow, a lock icon, the HOLLYLAND logo, and a bottom toolbar with icons for Tools, WFM, HIST, Focus, Zebra, and Frame.

APP FEATURES INTRODUCTION

Waveform

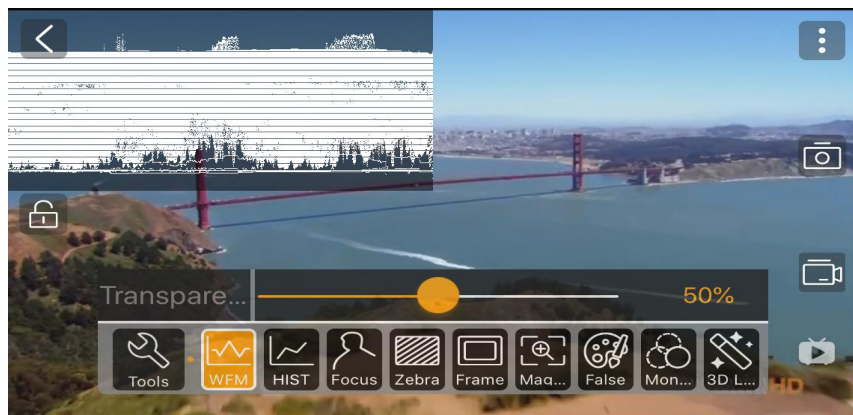
Waveform and brightness histogram are the tools to view auxiliary exposure in a dynamic range

Histogram



↓ Long press the button to adjust WFM

↓ Long press the button to adjust HIST



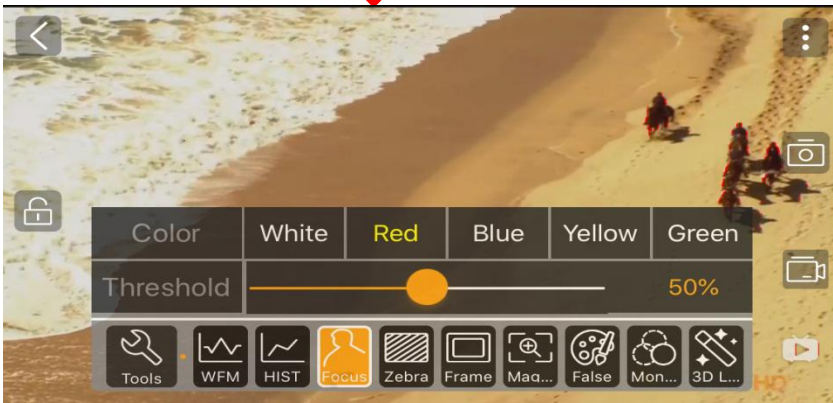
APP FEATURES INTRODUCTION

Focus

Peak focus allows you to focus accurately during recording, with highlights for the upper focus (color optional). Use the bottom slider to change color and adjust focus.

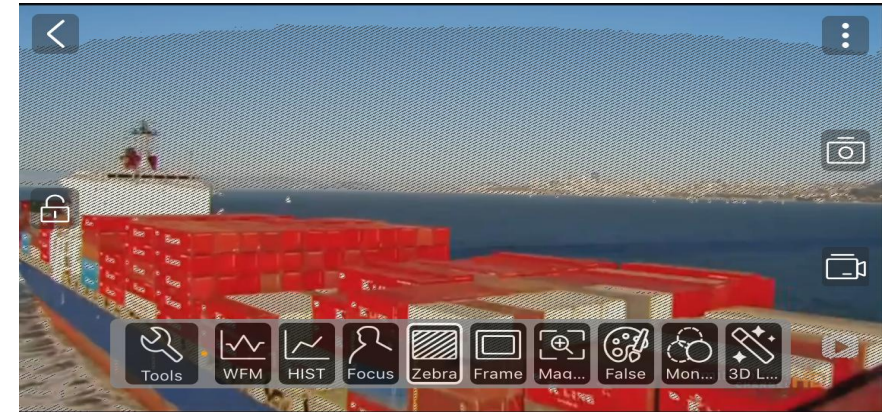


Long press the button to change color and adjust focus

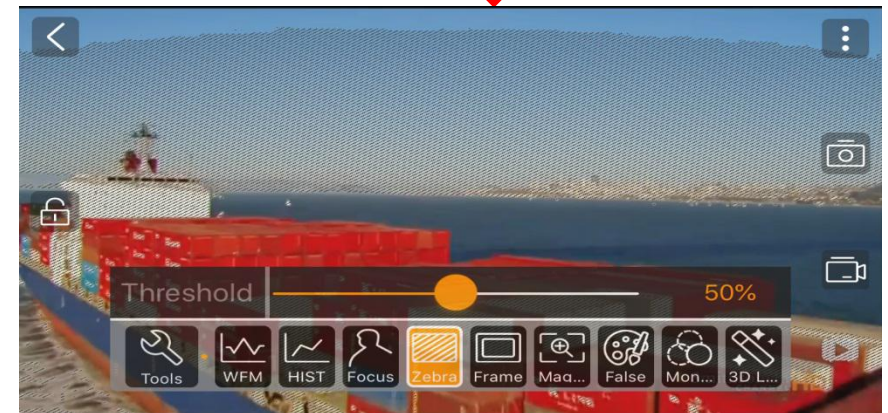


Zebra

Zebra shows the image exposure area. Drag the bottom slider to adjust the zebra pattern



Long press the button to adjust zebra



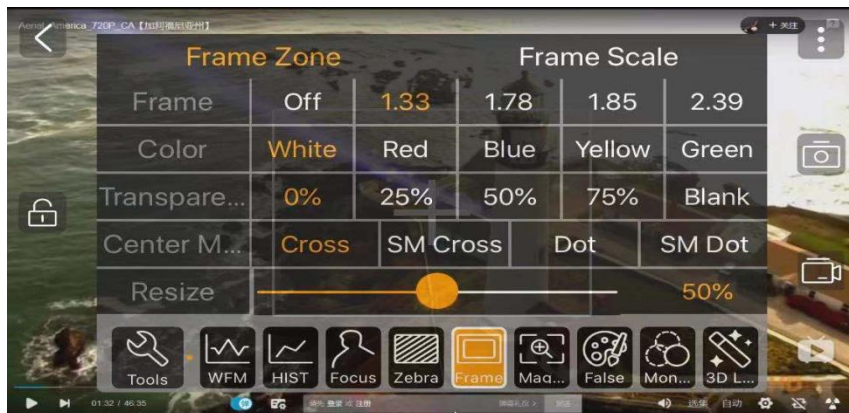
APP FEATURES INTRODUCTION

Frame

The Frame allows you to setup the different aspect ratio of the image.



Long press the button for detailed settings



Magnify

The Magnify can check the focus more accurately with 2x magnification, the size and color is selectable.

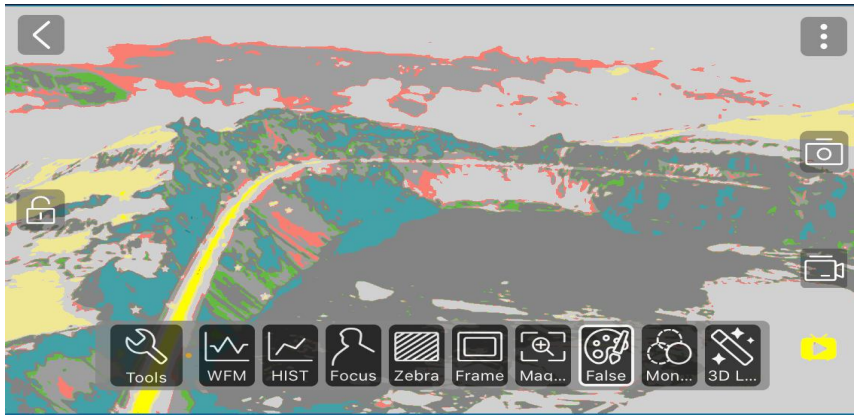


Long press the button to change the size and color

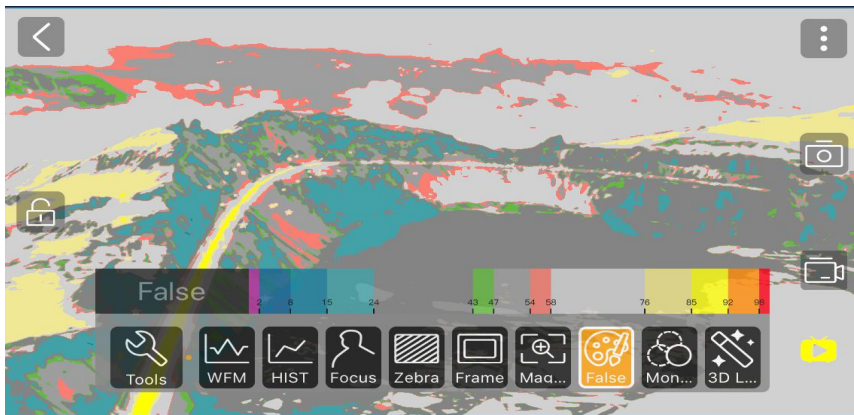


APP FEATURES INTRODUCTION

False Color



↓ Long press the button to select color



Monochrome

Display a single color image; Long press with white, green, blue and gray optional.



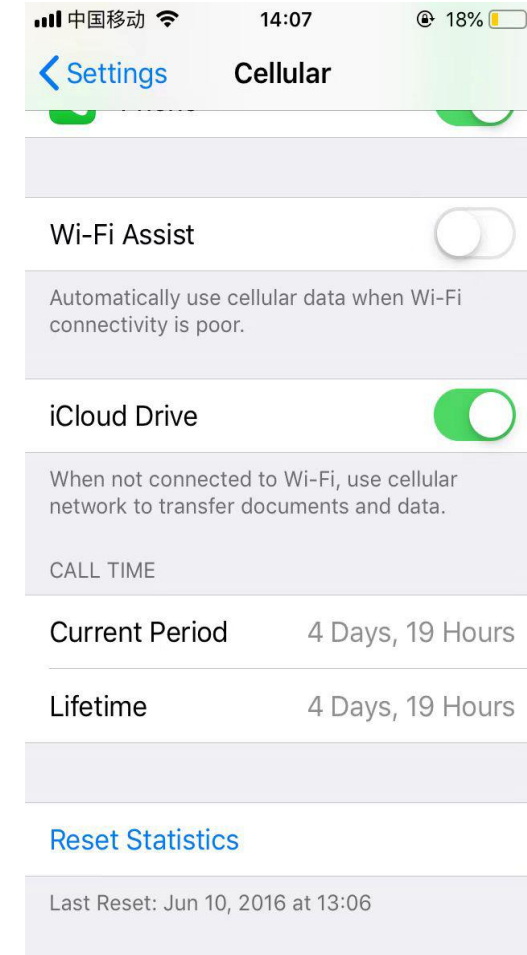
3D LUT



HOW to FIX CONNECT FAILURE PROBLEM



IOS System:
Close the Wi-Fi Assist



Note:

The Wi-Fi of Mars400(S) is unable to connect to the Internet.

If some phone do not close the WIFI assist, the phone will refuse to connect to the WIFI which is unable to connect to the Internet, and that will result in the APP connection failure.

HOW to FIX CONNECT FAILURE PROBLEM



Android System:
Huawei Phones: Close WLAN+
Xiao Mi Phones: Close WLAN
assistant



Note:

The Wi-Fi of Mars400(S) is unable to connect to the Internet.

If some phone do not close the WIFI assist, the phone will refuse to connect to the WIFI which is unable to connect to the Internet, and that will result in the APP connection failure.

FAQ



1. Where are recorded video saved ?

A: In Android system, it will be saved in the phone album.

In IOS system, it will be saved in the APP album.



2. How to delete recorded video?

A: IOS > Open the APP album.
Long press the video and then click the delete button.

Android > Open the phone album directly, then delete it.



3. What are the requirements of APP for mobile phones/Ipad?

A: The Android system has a minimum of Android 7, the IOS system is at least IOS11. At the same time, the phone or Ipad must support 5 GWiFi.



Thanks