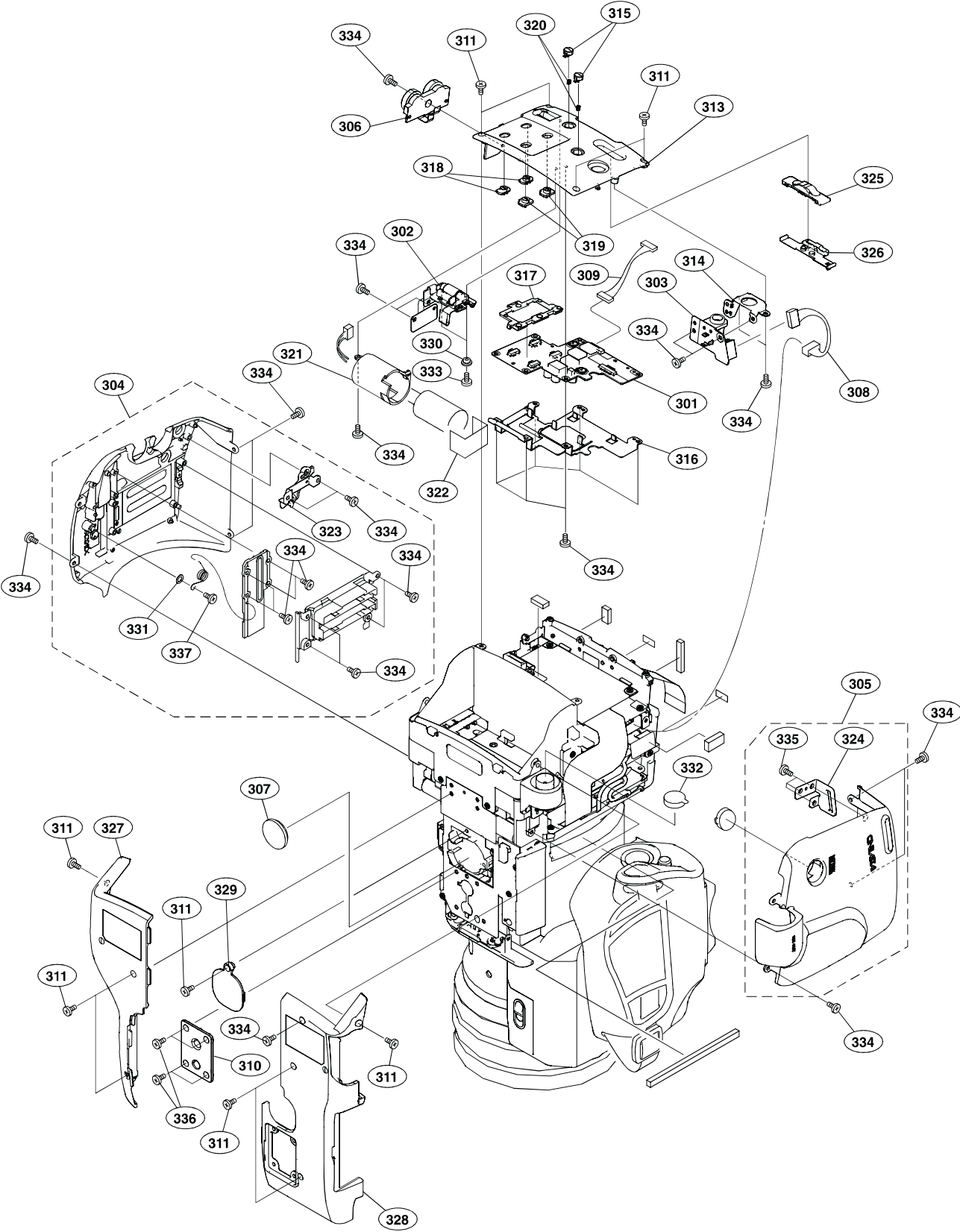


Rear, Inside, Outside Panel Block



Rear, Inside, Outside Panel Block

No.	Part No.	SP Description
301	A-1363-016-A	s MOUNTED CIRCUIT BOARD, ASW-65
302	A-1363-018-A	s MOUNTED CIRCUIT BOARD, SW-1397
303	A-1363-304-A	s MOUNTED CIRCUIT BOARD, DC-143
304	A-1376-923-A	s INSIDE PANEL ASSY
305	A-1376-924-A	s OUT SIDE PANEL ASSY
306	1-480-457-11	s BLOCK, AU VOLUME
307	△ 1-528-174-31	s BATTERY, LITHIUM (CR2032 TYPE)
308	1-965-712-11	s HARNESS, SUB (DC143-RE250)
309	1-965-714-11	s HARNESS, SUB (ASW65-LED465)
310	2-178-793-02	s BRACKET (TRIPOD)
311	3-080-203-31	s SREW(M2), LOCK ACE, P2
312	3-080-206-21	s SCREW, TAPPING, P2
313	3-278-307-01	s PANEL, REAR
314	3-278-308-01	s DC BRACKET JACK
315	3-278-309-01	s PUSH BUTTON REAR
316	3-278-310-01	s REAR PWD HOLDER PLATE
317	3-278-311-01	s SLIDE SW RAIL
318	3-278-312-01	s SLIDE SW REAR A
319	3-278-313-01	s SLIDE SW REAR B
320	3-278-314-01	s SPRING, COMPRESSION L2.5
321	3-278-315-01	s CAPACITOR BRACKET
322	3-278-316-01	s TAPE (C)
323	3-278-618-01	s PUSH BUTTON INSIDE
324	3-278-631-01	s BELT HOLDER PLATE
325	3-278-632-01	s POWER SW
326	3-278-633-01	s POWER SW SLIDE RAIL
327	3-278-649-02	s CASE (BOTTOM)L
328	3-278-650-02	s CASE (BOTTOM)R
329	3-278-651-01	s LID, LITHIUM BATTERY
330	3-285-186-01	s SW SPACER
331	3-701-439-01	s WASHER
332	3-285-384-01	s CUP BNC
333	3-729-013-61	s SCREW(M1.4X4.5), WASHERHEAD(+P)
334	3-968-729-52	s SCREW (M2), LOCK ACE, P2
335	4-644-493-11	s ACE (M2.6), LOCK
336	3-080-203-51	s SREW(M2), LOCK ACE, P2
337	4-644-492-21	s ACE (M2), LOCK