

SONY[®]



SRP-X500P
Digital Powered Mixer

www.sonybiz.net/media



An All-in-One Digital A/V Powered Mixer - Providing an

In 2002, Sony introduced the SRP-X700P Digital Powered Mixer, a new “all-in-one” system concept for multimedia presentations. Designed to function as the central control hub for the integration of video, audio and PC media sources, the SRP-X700P allows for rich content and multimedia presentation systems to be easily configured, without integrating several separate A/V presentation devices.

Expanding upon this concept, Sony is now introducing the SRP-X500P, a cost-effective and ideal choice for use in small to mid-scale presentation systems - for conference rooms, corporate boardrooms and classrooms to houses of worship. Within its compact chassis the SRP-X500P has seven major presentation devices - including an RGB/video switcher, audio mixer, wireless tuner slots, sound processor, and digital power amplifier. For smooth control over presentations there is an easy-to-use front-panel layout, providing instant access controls for compatible Sony VCRs, DVD players, projectors and PCs. Plus, the built-in digital mixer offers important DSP functions, including a feedback reducer and equalizer for high-quality audio.

Features

All-in-One Design

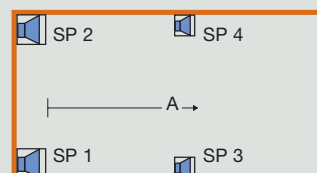
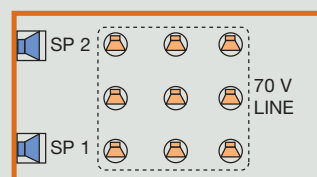
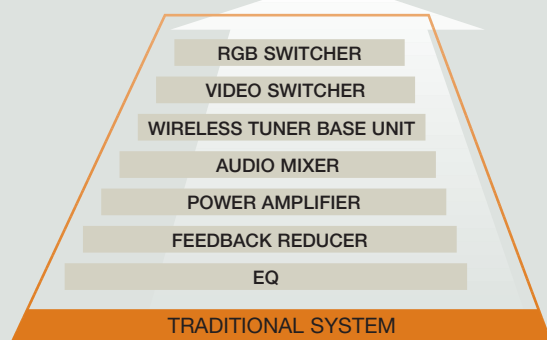
The SRP-X500P incorporates the functionality of seven presentation devices in a compact 3U high, 19-inch rack-mountable chassis, enabling modern presentations using a wide variety of A/V sources. Compared to purchasing these devices separately, the SRP-X500P presents a large reduction in system cost and eliminates time-consuming wiring and adjustments between such devices.



Nine System Presets

Setting up audio parameters of a presentation system can be a difficult task, especially to deliver high-clarity audio to all areas of the venue. The SRP-X500P offers nine factory-default system settings in its memory, enabling more efficient audio adjustment. Speaker system configurations are also included in these settings, allowing quick setup of the audio system by recalling the one best suited for the venue.

SRP-X500P ALL IN ONE DESIGN Digital Processing



SRP-X500P



Front Panel



Rear Panel

Versatile Interfaces

The SRP-X500P offers an array of video, PC, and audio I/Os. In addition to conventional composite and component video inputs, it supports computer RGB input and output, both of which accommodate up to SXGA resolution. As for audio, four microphone inputs and two stereo line inputs are available, each which can be freely assigned to the four audio outputs.

Built-in Four-Channel Digital Power Amplifier

The SRP-X500P is equipped with a four-channel digital power amplifier that can be switched between high and low impedance modes to suit various room types.

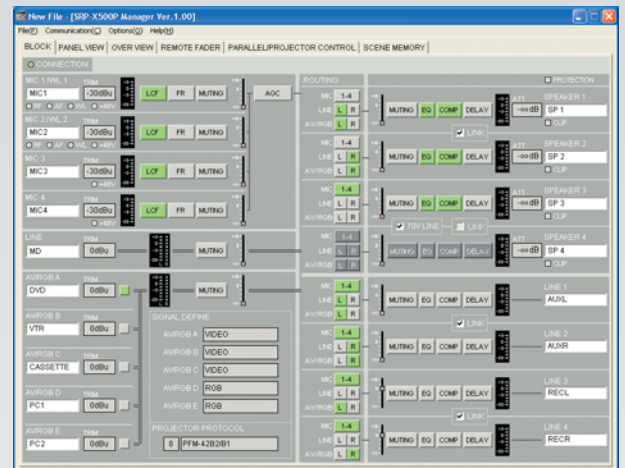
Low impedance mode:

90 W + 90 W + 50 W + 50 W (4 Ω , 8 Ω)*

High impedance (70 V line) mode:

90 W + 90 W (4 Ω , 8 Ω)* + 60 W (82 Ω)

* The same power rating can be acquired for both 8 Ω and 4 Ω speaker impedance. Connect the speakers so the total speaker impedance is 4 Ω or higher.



SRP-X500P Manager Block Screen

PC Control With Easy-to-Use GUI

For system setup and operation from a PC, the SRP-X500P is supplied with the Windows-based SRP-X500P Manager software.* From its easy-to-use GUI, operators can control detailed settings such as the equalizer, AGC, and compressor, before the presentation.

* System requirements:

- OS: Microsoft® Windows® Me, 2000 Professional, XP Professional or XP Home Edition
- CPU: Intel® Celeron® 400 MHz or higher
- RAM: 128 MB or greater
- Available hard disk space: 20 MB or higher

Optional accessories



AN-820A
UHF Antenna



WRU-806A/806B
UHF Synthesized Tuner Unit

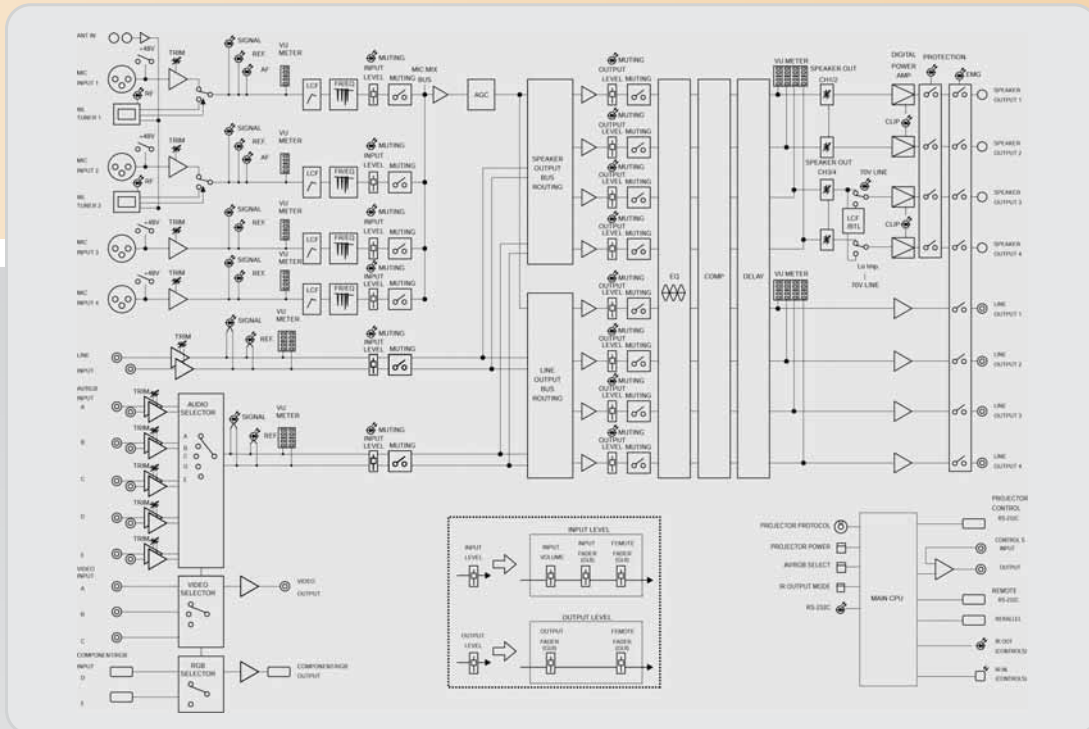


UWP-X1/X2
UHF Wireless Microphone Package (photo shows a tuner unit included in the UWP-X Series package)

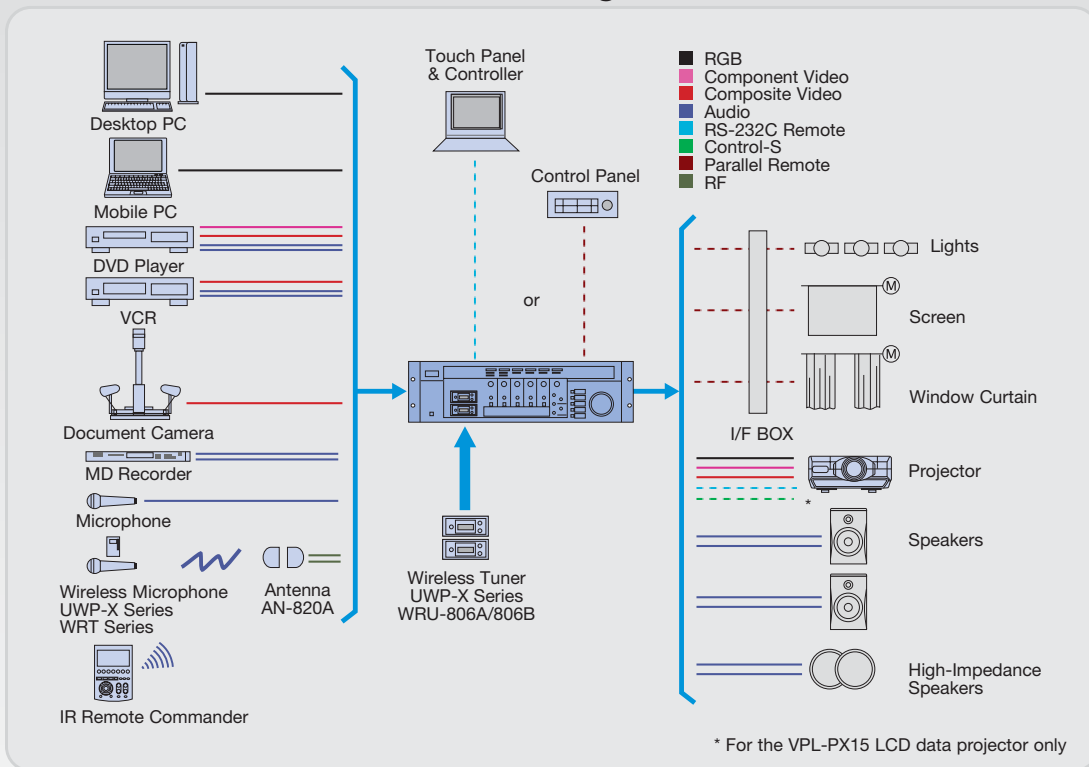


RM-AV3000 Series
Remote Commander

System configurations



Block diagram



Specifications

General

Power requirements	AC 230 V, 50/60 Hz
Power consumption	120 W
Operating temperature	0 to +40 °C (+32 to +104 °F)
Storage temperature	-20 to +60 °C (-4 to +140 °F)
Dimensions (W x H x D)	482 x 132 x 357 mm (19 x 5 1/4 x 14 inches)
Mass	Approx. 12 kg (26 lb 3 oz)
Supplied accessories	AC power cord (1), operation manual (1), foot (4), SRP-X500P Manager Software CD-ROM (1), antenna (2)

Electrical characteristics

Composite video

Colour system	NTSC/PAL/SECAM
Frequency response	50 Hz to 10 MHz
Level	1.0 Vp-p (75 Ω)

Component video

Colour system	NTSC/PAL
Frequency response	50 Hz to 150 MHz
Level	Y: 1.0 Vp-p (75 Ω), R-Y/B-Y: 0.7 Vp-p (75 Ω)

RGB

Frequency response	50 Hz to 150 MHz
Resolution	SXGA: 1280 x 1024 pixels, 60 Hz, supporting 480p/1080i
Level	R/G/B: 0.7 Vp-p (75 Ω), Sync/HD, VD: 1 to 5 Vp-p (47 kΩ) sync positive/negative

Audio (analogue)

Frequency response	Line input to Line output: 20 Hz to 20 kHz ±0.5 dB (1 kHz reference)
T.H.D.	Line input to Line output: Less than 0.01% (1 kHz)
S/N ratio	Line input to Line output: More than 94 dB (IHF A)
Crosstalk	Line input to Line output: Less than -80 dB (1 kHz)

Others

Antenna in (a/b)	BNC x2, DC +9 V out
Microphone power supply	DC +48 V, MIC 1 to 4 inputs

Audio inputs

Input	Connector	Circuit	Channel	Reference/peak level	Impedance
MIC/WL 1, 2	XLR-3-31 type	Balanced	Mono	-60 to -30 dBu/-37 to -7 dBu	More than 2.2 kΩ
MIC 3, 4	XLR-3-31 type	Balanced	Mono	-60 to -30 dBu/-37 to -7 dBu	More than 2.2 kΩ
LINE	Phono x 2	Unbalanced	Stereo	-30 to 0 dBu/+10 dBu	More than 10 kΩ
AV/RGB (A to E)	Phono x 2	Unbalanced	Stereo	-30 to 0 dBu/+10 dBu	More than 10 kΩ

Audio output

Output	Connector	Circuit	Channel	Reference/peak level	Load impedance
LINE 1 to 4	Phono x 1	Unbalanced	Mono	-5 dBu/+15 dBu	More than 10 kΩ

Speaker outputs

Output	Connector	Speaker impedance	Rated power
CH1/CH2	Screw-type binding terminal x 4	4 to 16 Ω	90 W (4 Ω , 8 Ω)*
CH3/CH4 (70 V LINE)	Screw-type binding terminal x 4	4 to 16 Ω (at low impedance) 82 to 10 kΩ (at 70 V LINE)	50 W (4 Ω , 8 Ω)* 60 W (82 Ω)

* The same power rating can be acquired for both 8 Ω and 4 Ω speaker impedance. Connect the speakers so the total speaker impedance is 4 Ω or higher.

AV/RGB inputs

Input	Connector	Signal type
VIDEO (A to C)	Phono x 1	Composite
COMPONENT/RGB (D, E)	D-sub 15-pin	Component/RGB

AV/RGB outputs

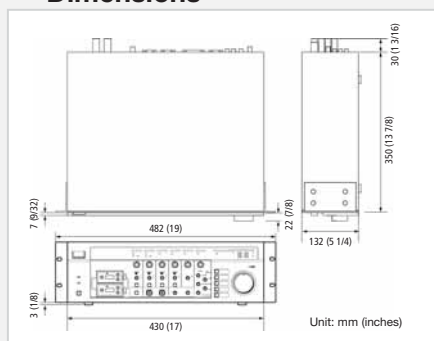
Output	Connector	Signal type
VIDEO	Phono x 1	Composite
COMPONENT/RGB	D-sub 15-pin	Component/RGB

Remote control terminal

RS-232C ports	Connector	Function	
PROJECTOR CONTROL	D-sub 9-pin (male)	Input selection, Power on/standby	
REMOTE	D-sub 9-pin (male)	Setting of SRP-X500P audio and switch functions from a PC running the SRP-X500P Manager software	
Parallel I/O ports	Connector	Function	Type
PARALLEL IN	D-sub 25 pin (female)	AV selection, Power on/off, Scene recall, Volume, Volume up/down, Muting	Make-contact CMOS level, active low
		Output status of Parallel input function	Open collector
Control-S ports	Connector	Function	
PROJECTOR IN*	Mini jack	For the connection of projector remote commander	
PROJECTOR OUT*	Mini jack	Input selection, Power on/standby	

* For the VPL-PX15 LCD data projector only

Dimensions



Services from Sony: working with you, working for you. Recognising that every company and every challenge is unique, we offer a complete and comprehensive range of services all the way through consulting, planning, financing, implementation, training, servicing, maintenance and support. Choose exactly what's right for you, when and where you need it.

Sony Professional Services: Tailor-made design, installation and project management of audio-visual and IT (AV/IT) systems using skills developed over 25 years of systems integration.

Sony Financial Services: Innovative and flexible finance solutions designed to meet budgetary and financial requirements and constraints, enabling businesses to always have the most current technology.

Sony Training Services: A range of off-the-shelf or customised training services from basic operation through to high-level technical maintenance.

Sony Support Services: Fully integrated and customised support for products and systems throughout their operational life, combining proactive and reactive technical services

Not all services are available in all countries. If you'd like to find out more about what we do, who we do it for and how we do it, visit <http://www.sonybiz.net> or contact your local Sony office.

Sony Services

© 2005 Sony Corporation. All rights reserved. Reproduction in whole or in part without written permission is prohibited. Features, design and specifications are subject to change without notice. All non-metric weight and measurements are approximate. Sony and Remote Commander are a registered trademarks of Sony Corporation. All other trademarks are property of their respective owners. CA SRP-X500P/GB- / /2005