

# VFM-058W 5.5" FHD Viewfinder Monitor



Full HD version of the new lightweight viewfinder monitor offers an outstanding picture quality with 5.5 IPS LCD with 1920x1080 resolution, accurate color reproduction and professional features.



## PRODUCT SUMMARY

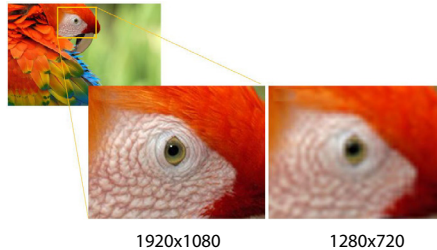
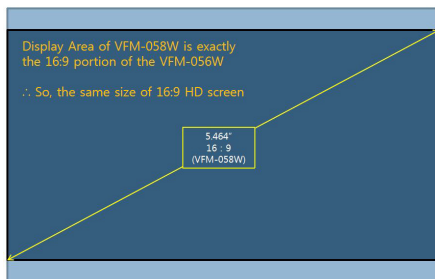
### 5.5" Full HD Viewfinder

The VFM-058W, the lightweight viewfinder monitor, offers an outstanding picture quality with 5.5" LCD, and Full HD resolution of 1920 x 1080. Innovative and ergonomic design of VFM-058W makes you comfortable in the shooting environment and its light solid magnesium case achieves the highest efficiency of ventilation.

The VFM-058W supports multi-formats including 3G/HD/SD-SDI and HDMI that offers a wide application range from DSLR cameras to Pro camcorder for broadcasting and movie shooting. The VFM-058W has various features such as Max Brightness function, Temperature Adaptive Color, HDMI-to-SDI conversion output, 1:1 pixel mode, Luma(Y) Zone Check function, DSLR Scale, Waveform, Vectorscope, Range Error, Focus Assist, Markers, Audio Level Meter with speaker and time code display.

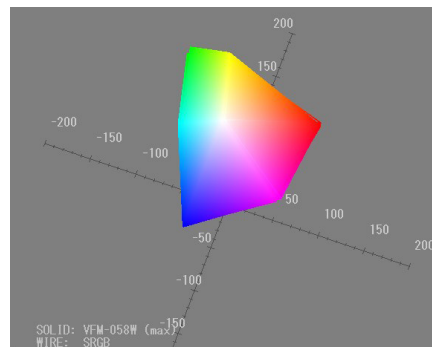
### Razor-Sharp Image

A state-of-the-art IPS LCD with full HD resolution of 1920\*1080 will show you the sharpest detail of what you are shooting. The active display area of VFM-058W is exactly the same as the 16:9 portion of the VFM-056W. With FHD resolution, the pixle density is now 150% higher while maintaining the same size of screen.



### Accurate Color Reproduction

The VFM-058W also guarantees the correct color that is required by the HD standards. Primary colors of VFM-058W covers 100% of the color reproduction range specified in the ITU-R BT. 709 standard. And powered by the TVLogic's color calibration technology and true 8bit driving, most accurate colors with smooth gradation are reproduced to give you the correct look of what you are shooting.



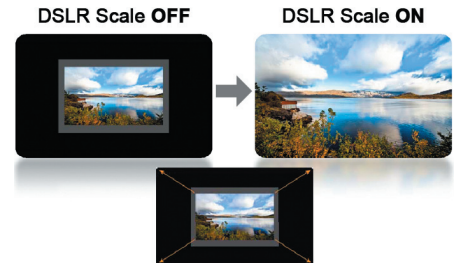
### New Design

The VFM-058W has been redesigned from its prototype of VFM-056W based on the customers' feedback. Acrylic filter now fits into the front bezel to properly protect the screen from dust and shake. Control is now easier with relocated encoder button and menu button. 3 more short-cut keys are added for fast and easy access. Acrylic Filter and HDMI Lock will be supplied as basic accessories. Newly designed flexible sunhood will be the perfect match for outdoor shooting environment.

## FEATURES INCLUDE

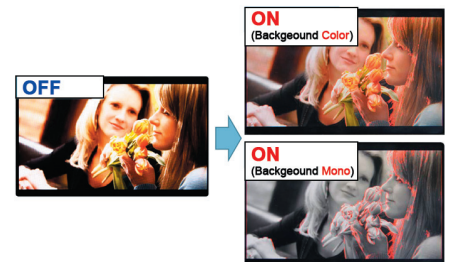
### DSLR Scale

This function is optimized for Canon 5DMK2, 7D and Nikon D7000 that display various resolutions for preview, recording, & playback. DSLR Scale function scales the low resolution input signal from DSLRs to fit the full screen of LVM-074W.



### Focus Assist (=Peaking Filter)

Focus Assist function helps the shooter to easily find out the exact area in the picture with good focus, simply by adding colors on the shape or boundaries of the object in the picture. Mono background mode is added for ultimate focus control.



### Waveform/Vector Scope

Displays Waveform Luma (Y' level) and Vector Scope (B-Y, R-Y on XY axis) in Y/Cb/Cr, Wide and Line modes.

**Range Error**

The LVM-074W can analyze the Luma(Y') and Chroma(Cb/Cr) components of the input video signal and warn the user with blinking pixels, where the video signal is over the maximum or under the minimum of the designated range. This helps the user to optimize the exposure condition of the camera.



**Luma(Y') Zone Check-Color Mode**

Displays designated Luma(Y') level as a solid color on screen to assist in exposure adjustments.



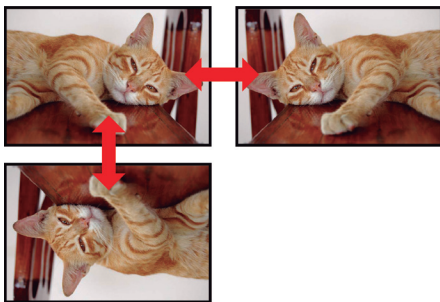
**Luma(Y') Zone Check- Zebra Pattern Mode**

Displays designated Luma(Y') level as Zebra patterns.



**H/V Flip (Auto 180° pivot screen)**

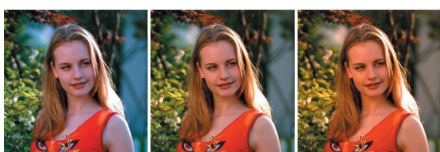
The LVM-074W allows the displayed image to be flipped horizontally or vertically. This feature provides flexible mounting options for camera operators.



**Temperature Adaptive Color**

Internal sensor measures the temperature inside the monitor and compensates the white balance drift caused by a cold or hot weather. This function is useful for shooting under various weather condition.

Ex) LCD panel's color drift vs Ambient Temperature



	VFM-056W/WP	VFM-058W	Note
<b>Display Panel</b>			
Size	5.6"	5.5"	
Resolution	1280x800 (16:10)	1920x1080 (16:9)	
Pixel Pitch	0.095mm	0.063mm	269ppi vs 403ppi
Color Depth	16.7M (Dithered 8bit)	16.7M (True 8bit)	
Color Gamut	NTSC 56%	NTSC 72%	
Viewing Angle	170°(H)/170°(V)	160°(H)/160°(V)	AFFS vs IPS
Luminance	300cd/2	450cd/2	
Contrast Ratio	500 : 1	1000 : 1	
Display Area	121mmx76mm	121mmx68mm	Same Display Area for 16:9 format
<b>Input Interface</b>			
SDI	1xBNC	1xBNC	
HDMI	1xHDMI	1xHDMI	
Analog	3xRCA	-	
<b>Output Interface</b>			
SDI	1xBNC	1xBNC	SDI-to-SDI, HDMI-to-SDI
HDMI	-	1xHDMI	HDMI-to-HDMI, SDI-to-HDMI
<b>Input Signal</b>			
3G-SDI	2.970Gbps		
HD-SDI	1.485Gbps		
S-SDI	270Mbps		
HDMI	1080p (24/25/30/50/60, 1080i(50/60), 720p(50/60) 480i (60), 480p (60), 576i (i50), 576p(50) VESA/IBM modes.		
<b>SDI Input Signal Formats</b>			
SMPTE-425M-A/B	1080p (60/59.94/50/30/29.97/25/24/23.98/30sF/29.97sF/25sF/24sF/23.98sF) 1080i (60/59.94/50)		
SMPTE-274M	1080i (60/59.94/50), 1080p (30/29.97/25/24/24sF/23.98/23.98sF)		
SMPTE-296M	720p (60/59.94/50)		
SMPTE-260M	1035i (60/59.94)		
SMPTE-125M	480i (59.94)		
ITU-R BT.656	576i (50)		
<b>ETC</b>			
Case Material	Magnesium	Magnesium	
Audio In	Embedded Audio		
Audio Out	Analog Stereo (Phone Jack) Internal Speaker (Mixed Mono)		
Power	DC 6.8 ~ 12V		
Power Consumption	8.4W	9.6W	
Operating Temperature	0°C to 45°C (32°F to 113°F)		
Storage Temperature	-20°C to 60°C (-4°F to 140°F)		
Basic Accessories	AC Power Cord DC Power Adaptor BNC Connector Camera Mount Support	AC Power Cord DC Power Adaptor Acrylic Filter HDMI Lock	
<b>Features</b>			
Max Brightness On/Off	VFM-056W & WP	Yes	
TVLogic Calibration Utility		Yes + Auto Cal.	Fast & easy calibration
Temp. Adaptive Color		Yes	
Focus Assist		Yes	
Marker		Yes	
User Aspect		Yes	
Blue Only / Mono		Yes	
H/V Delay		Yes	
H/V Flip		Yes	
USB Field Upgrade		-	Yes
3G Level A/B		Yes	
SDI-to-SDI through out	VFM-056WP only		
HDMI-to-SDI conversion		HDMI to SDI Cross Conversion output	1080p
Waveform/Vectorscope (Y/Cb/Cr, Line Waveform)		Yes	
Range Error		Yes	
Luma(Y') Zone Check		Yes	
Audio Level Meter (16ch)		Yes	
Time Code Display		Yes	

\* Specifications above may be updated without prior notice.

**Optional Accessories**

