



Quick Start Guide

PHYSICAL PROPERTIES



- A:** Power button
- B:** Broadcast button
- C:** Video status indicator
- D:** Network status indicator
- E:** Broadcast status indicator
- F:** Menu navigation button

- G:** Detachable plate
- H:** USB modem port (not shown)
- I:** Micro SD card slot (not shown)
- J:** RP-SMA connectors
- K:** HDMI input
- L:** SD/HD/3G-SDI input

- M:** 10/100 Ethernet port
- N:** Mic/Line stereo input
- O:** USB-C power input
- P:** 1/8" headphone output
- Q:** Thumb screws
- R:** SMA antennas

VidiU Go includes two USB ports designed for VidiU Node (sold separately) or any compatible 3G/4G/LTE USB modem.

TABLE OF CONTENTS

Button Operation	2
Battery	2
Power and Connect	2
Get Online	3
Core	5
Sharelink.....	7
Choose a Platform and Quality	8
VidiU App	9
Recording	10

BUTTON OPERATION



Menu Navigation Button

Use the arrow buttons to navigate through the menus. Press the center button to confirm or open selection.



Broadcast/Record Button

Start/stop broadcast or recording.

BATTERY

VidiU Go is equipped with an internal rechargeable Li-polymer battery, providing up to 2.5 hours of duration. To check the battery life while the device is powered off, press any of the **Menu Navigation Buttons**. The battery life percentage will then be displayed on the front panel.

POWER AND CONNECT

- 1 Connect power to VidiU Go using the included USB-C A/C adapter or another USB-C power source.
- 2 Connect the HDMI or SDI output from your video source to VidiU's input connector (**H or I**).
- 2 Press the Power button on the front panel (**A**).

GET ONLINE

You can use the front panel interface, the built-in web UI (see below), or the VidiU app (iOS or Android) to remotely control and configure VidiU Go to connect to a network. Choose one of the following options to get VidiU online.

Access the web UI

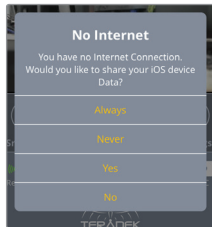
- 1 From the front panel interface, connect to a network, then select **[Info]** to reveal the IP address.
- 2 Enter the network's IP address in your web browser's navigation bar.

Connect via VidiU Node/USB Modem

- 1 Detach the left and right side panels to expose the USB ports.
- 2 Insert a VidiU Node or compatible 3G/4G USB modem on each side, turn the thumb screws clockwise (VidiU Node only), then wait for the  icon to appear on the front panel display.

Connect via Cellular Data Plan (Hotspot)

- 1 Connect your mobile phone to VidiU Go's WiFi network:
VidiU-Go-XXXXX (XXXXX is the last five digits of VidiU's serial number).
- 2 Open the VidiU app and select the corresponding VidiU.
- 3 When prompted, click **Yes** to use your cellular data plan.



Connect to a WiFi Network

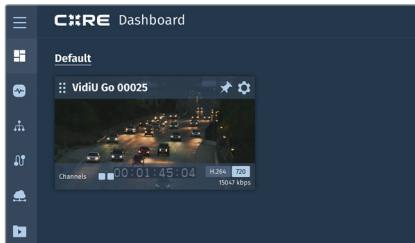
- 1** Navigate to the WiFi menu and select a mode:
 - a. **Access Point (AP) Mode** - Connect your device to VidiU's WiFi network: **VidiU-Go-XXXXX** (XXXXX is the last five digits of VidiU's serial number).
 - b. **Client Mode** - Select **Client**, tap **Scan for Networks**, then enter your credentials for the network you select.
- 2** To configure your network settings, navigate to the **Network** menu, then select **Wireless** (**WiFi** if using the front panel or web UI).

Connect via Ethernet

- 1** Plug an Ethernet cable from the VidiU's Ethernet port to an Ethernet switch or router.
- 2** Navigate to the **Network** menu, then select **Wired** to verify that Ethernet is set to DHCP and to view VidiU Go's IP address.

CORE

VidiU Go can be remotely accessed, configured, and controlled using Teradek's Core Cloud management and routing service. In addition to offering network bonding, remote management, and streaming to multiple destinations, Core allows you to convert an HEVC stream to H.264. HEVC provides the most efficient encoding for both low bitrate and high quality applications, while H.264 is supported by a wider variety of streaming platforms.



Connect VidiU to Core


- 1 From the VidiU app, web UI or front panel, enter the **Cloud** menu, then select **Core**.
- 2 Enter your credentials to log VidiU into your Core account, or visit **corecloud.tv** to create a new account.
- 3 Once a connection is established, you can configure VidiU Go from the Core web UI, or the Core app.

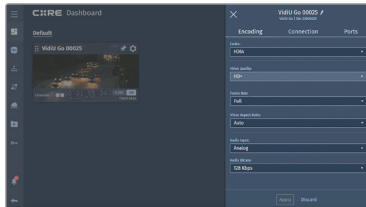


HEVC and H.264


In situations where bandwidth is limited, using HEVC will preserve the video quality while using lower bitrates. Core has built in transcoding functionality to convert video back to H.264 for delivery to streaming platforms that don't support HEVC. To switch between HEVC to H.264:

From the Core web UI

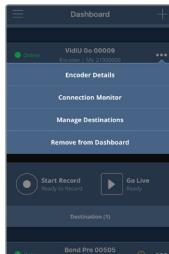
- 1 Tap the  icon to enter the **Settings** menu.
- 2 Tap the **Codec** button and select H.264.
- 3 Tap **Apply** at the bottom of the Settings menu.



From the Core App

- 1 Tap the  icon to enter the **Encoder Details** menu.
- 2 Tap the **Settings** button, then select H.264.
- 3 Tap **Apply** at the bottom of the screen.

Once Core is enabled, you can switch between HEVC and H.264 from VidIU's broadcast settings menu on the front panel or the web UI.



SHARELINK™

Sharelink is another cloud service by Teradek that was created specifically for VidiU Go. Sharelink unlocks the full potential of your live streams by offering all the same benefits as Core (network bonding, streaming to multiple platforms, remote management, and cellular tethering), with the exception of transcoding an HEVC stream to H.264. **A subscription to Sharelink is required to bond Internet connections.**



Supported Connections


- Ethernet
- Up to two VidU Go Nodes or two 3G/4G/LTE USB modems.
- WiFi (AP mode) – Up to four cellular devices with the VidiU App
- WiFi (Client mode) – Connect to an existing wireless network or mobile hotspot

To Activate Sharelink

- 1** Connect your device to VidiU's WiFi network.
- 2** Enter the **Cloud** menu, then select **Sharelink**.
- 3** Tap **Login** to access your Sharelink account, or visit **sharelink.tv** to create an account.
- 4** After creating an account, return to the **login** screen and enter your credentials.

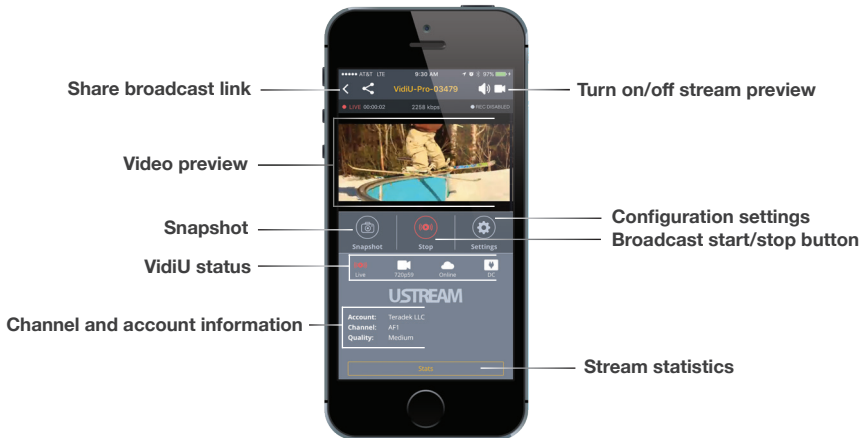
CHOOSE A PLATFORM AND QUALITY

If you don't have a subscription to Core or Sharelink, VidiU can be configured to broadcast directly to any compatible video streaming platform. Simply enter your credentials using the VidiU app, web UI (page 3), or the front panel interface.

- 1 Enter the **Broadcast** menu.
- 2 Choose a platform – **Ustream, Livestream, YouTube, Facebook, Periscope, Vimeo, Wowza** – or select manual **RTMP**.
- 3 Enter your credentials or RTMP destination info, then press apply.
- 4 Select your desired video bitrate and resolution under the **Broadcast Quality** menu.
- 5 To go live, press the **Broadcast/Record** button on the front panel, or the  button on the web UI or the VidiU app.

VIDIU APP

The VidiU app can be used to remotely monitor and configure VidiU, and allows you to broadcast high definition video to any compatible streaming platform directly from your phone or tablet.



RECORDING

VidiU Go supports recording to a micro SD Card or compatible USB thumb drive.

- 1** Detach the left side plate on VidiU Go and insert a compatible micro SD card or USB drive to the corresponding slot. The front panel will indicate that the media is detected.
- 2** Enter the **Recording** menu, and select **Enable Recording**.

Once enabled, a copy of your broadcast will be saved to the storage media. For best results, use Class 6 or higher SD cards.

Recording Operation

- Recordings are triggered by the broadcast state. When a broadcast starts, a new recording is created.
- If a broadcast is interrupted for connectivity reasons, recording will continue.
- If a recorded file exceeds your storage media's file size limits, a new file will be created and recording will continue.
- Recording resolution and quality match your configured Broadcast settings.

Teradek regularly releases new firmware versions to improve performance, add new features, or to fix vulnerabilities. Press the Firmware button at the bottom of the app's display, or visit teradek.com to update your device with the latest firmware.

NEED MORE HELP?

SUPPORT: <http://support.teradek.com> → Contains tips, information and all the latest firmware & software updates.

TERADEK SUPPORT STAFF: support@teradek.com or call 888-941-2111 ext. 2 (Mon-Fri 6am to 6pm PST)



© 2018 Teradek, LLC. All rights reserved.