

Tektronix WFM6100, WFM7000, WFM7100

Multi-format, Multi-standard Waveform Monitors

► Fact Sheet



Supports HD, SD and composite analog video formats.

XGA display with FlexVu™ – Create the display that best meets your needs.

CaptureVu™ – Much more than “freezing” a display.

MyMenu – Frequent tasks at your fingertips.

USB port – removable storage and loading of data.

Quickly check audio with convenient front-panel headphone port.

WFM6100

SD-capable waveform monitor for applications in video systems using SD digital video, composite analog video or both, and that require high-performance monitoring and measurement capabilities.

WFM7000

HD-capable waveform monitor for applications in video systems using any combination of HD digital video, SD digital video or composite analog video and that require basic monitoring capabilities.

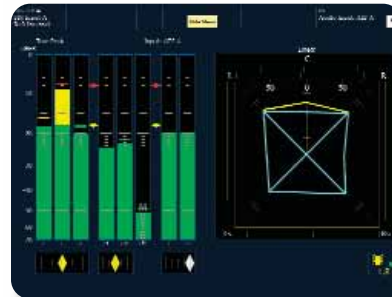
WFM7100

HD-capable waveform monitor for applications in video systems using any combination of HD digital video, SD digital video or composite analog video and that require high-performance monitoring and measurement capabilities.



Patented Timing Display

The intuitive display simplifies facility timing by graphically and numerically showing timing offsets relative to an external reference.



Comprehensive Audio Monitoring Options

Sophisticated audio level and phase displays, audio quality statistics, surround sound display, auto-sensing of Dolby formats, Dolby metadata decode.



Tektronix See and Solve™ Displays

Familiar waveform and vector displays, plus the Lightning and SCH displays for verifying color timing.

Split diamond and Arrowhead displays for quickly ensuring gamut compliance.

Picture display with closed-caption decode.

Extensive alarm detection, status reporting, video quality statistics and error logging.

Broad range of ancillary data monitoring capabilities.

Remote access and control.



Custom Safe Area Graticules

SMPTE, ITU, ARIB and user-definable Safe Area graticules help editors correctly place graphic elements.



SDI Signal Measurement and Data Analysis

High-performance Eye display with jitter and cable measurements plus in-depth analysis of video and ancillary data.

► List of Options

Video Options

Must choose at least one video option when ordering:

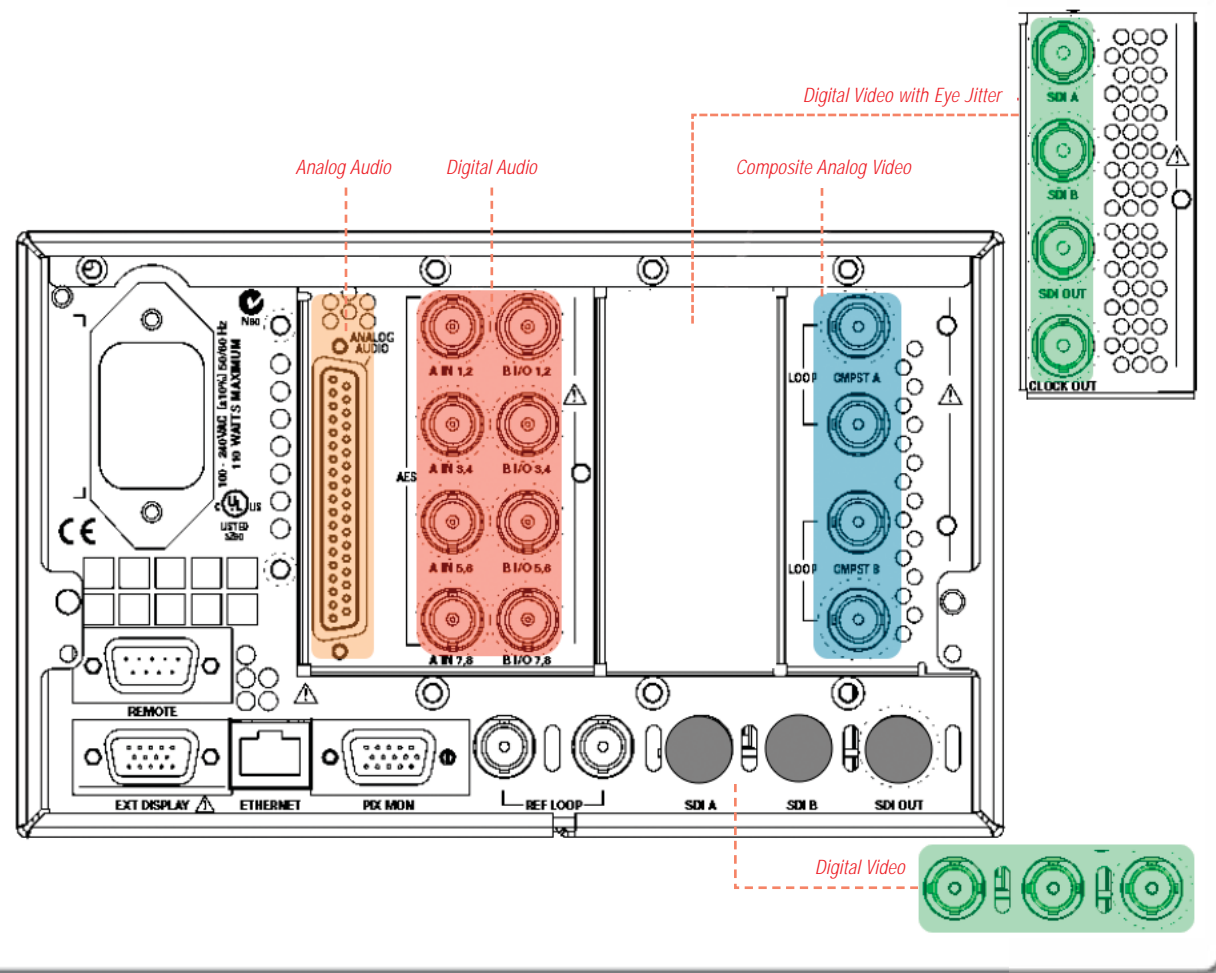
- CPS** – (Available for all models.)
Monitor Composite analog video formats.
- SD** – (Available for all models.)
Monitor Standard Definition digital video formats.
- HD** – (Available for WFM7000 and 7100.)
Monitor High Definition digital video formats.

Audio Options

- DS** – (Available for all models.)
Monitor digital audio (embedded or AES/EBU inputs).
- AD** – (Available for all models.)
Option DS plus monitor analog audio.
- DD** – (Available for WFM6100 and WFM7100.)
Option AD plus monitor and decode Dolby Digital (AC-3).
- DDE** – (Available for WFM6100 and WFM7100.)
Option DD plus monitor and decode Dolby E.

Eye/Jitter and Data Analysis Options

- Available for WFM6100 and WFM7100 with SD or HD option.
- EYE** – Eye pattern display, jitter and cable parameter measurement.
- PHY** – Option EYE plus jitter waveform and Eye parameter measurements.
- DAT** – In-depth analysis of video and ancillary data.



Copyright © 2006, Tektronix. All rights reserved. Tektronix products are covered by U.S. and foreign patents, issued and pending. Information in this publication supersedes that in all previously published material. Specification and price change privileges reserved. TEKTRONIX and TEK are registered trademarks of Tektronix, Inc. All other trade names referenced are the service marks, trademarks or registered trademarks of their respective companies.

4/06 HB/WOW

25W-19436-0