

Panasonic

AG-DTL1

Digital Time-Lapse VTR
(PAL)



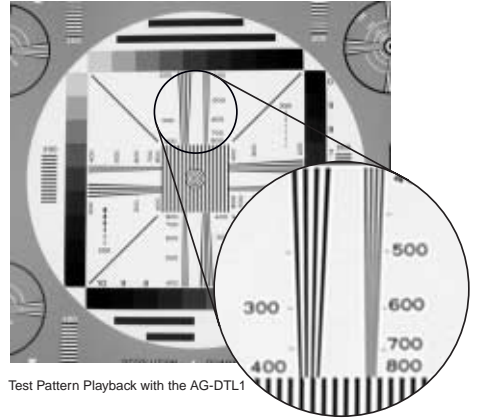
D-TL

Digital Picture Quality On Low-Cost S-VHS Tape

The AG-DTL1 time-lapse VTR, combines high digital picture quality with low operating costs.

Using the professional digital DVCPRO format, the AG-DTL1 records high-quality images onto a standard low-cost S-VHS tape. The AG-DTL1 offers reliability, and ease of operation, two benefits that have made Panasonic a worldwide favorite for surveillance applications.

Superior Frame by Frame Picture Quality with 520 line Resolution



Test Pattern Playback with the AG-DTL1

Panasonic DVCPRO equipment has already won the praise of broadcast and video professionals worldwide. In the AG-DTL1, DVCPRO's digital component recording system delivers superior pictures with 520 line of horizontal resolution (in High-Quality mode). Pictures are free from colour irregularities, ringing, vertical dancing, and skewing. DVCPRO also uses intra-frame compression, not inter-frame compression used in formats such as MPEG. This results in no image degradation even when images are output as single frame units, unlike MPEG, making DVCPRO ideal for the detail-oriented demands of surveillance applications.



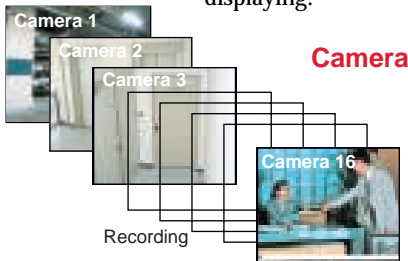
Inexpensive S-VHS Tape

Because video surveillance requires extremely long recording time capability, the cost of tape is critical. To keep running costs down, Panasonic designed the AG-DTL1 to use inexpensive S-VHS tape to record high quality DVCPRO digital video.

And, not only are S-VHS tapes widely available, they are easy to handle, highly durable and efficient to manage by economical tape rotation.

Built-In Frame Switcher for Connection of Up to 16 Cameras

A built-in frame switcher lets the AG-DTL1 record images from up to 16 cameras. Since this is built-in, A/D (analogue/digital) conversion for recording and D/A conversion for playback are only processed one time each, resulting in a high quality recording. In playback, the AG-DTL1 lets you select a particular camera for viewing or high-speed search. It is also possible to designate four cameras for quad displaying.



Playback with quad display

Group Programming

The AG-DTL1 allows timer recording from up to "eight groups" of cameras, with two cameras per group. Date, recording start time, end time, and recording mode can be programmed for each group, and this makes flexible operation possible for each surveillance location.

Timer Recording Programming

The AG-DTL1 lets you set and save those settings which contain recording start time, end time, and recording mode. You can then use the save settings for timer recordings on a weekly basis (same day and time every week), daily basis (same time every day), or on a particular day.

Dual Recording Modes

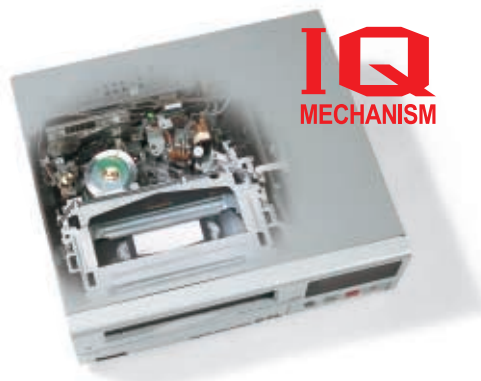
The AG-DTL1 delivers outstanding picture quality with 520-lines of horizontal resolution. The Standard Mode offers extended recording time with picture quality equivalent to S-VHS. Both modes offer a choice of field or frame recording. Recording time can be set in steps, from 3 hours all the way to 960 hours. In the 3 to 24 hour recording range, continuous audio recording is possible.

Recording Mode (Field)

Rec. Time	Interval Time		Audio
	High	Standard	
3 h	0.04 sec.	0.04 sec.	Yes
9 h	0.12 sec.	0.06 sec.	
12 h	0.20 sec.	0.10 sec.	
18 h	0.28 sec.	0.14 sec.	
24 h	0.36 sec.	0.18 sec.	
48 h	0.68 sec.	0.34 sec.	
72 h	1.00 sec.	0.50 sec.	No
96 h	1.32 sec.	0.66 sec.	
120 h	1.64 sec.	0.82 sec.	
180 h	2.44 sec.	1.22 sec.	
240 h	3.24 sec.	1.62 sec.	
360 h	4.84 sec.	2.42 sec.	
480 h	6.44 sec.	3.22 sec.	
960 h	12.84 sec.	6.42 sec.	

Superior Reliability and Durability

At the heart of the AG-DTL1 is Panasonic's renowned IQ mechanism, a proven success in time-lapse recording. Features such as two direct-drive reel motors assure top reliability. The IQ mechanism is designed for easy maintenance and quick parts replacement.



Added Safe Recording Features

- Automatic Recording Check when recording starts
- Automatic Head Cleaning
- Repeat Record Pass Indicator to avoid poor recordings from overuse of tape.
- Blue Screen Indication in non-recording situations
- Tape-End Warning Buzzer
- Power Failure Recovery (1-month timer backup)
- Rec Lock Function

Advanced Recording Features

- Alarm Recording: During extended-mode recording, when an alarm signal is received from an external device, the AG-DTL1 automatically switches to a 3-hour or 9-hour mode recording (preset).
- Emergency Recording: When power is shut off or the unit is set to the "Stop" position, and an alarm signal is received, the AG-DTL1 will automatically begin recording in Alarm Recording Mode.
- External Timer Recording: The system can be "automated" by using an external timer to turn the system on and off remotely.
- Series Recording: two AG-DTL1 VTRs can be connected for automatic alternating recording. This also allows multiplex recording from up to 8 cameras.

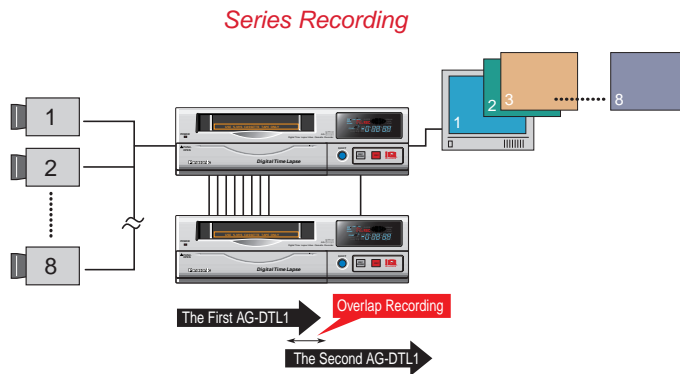
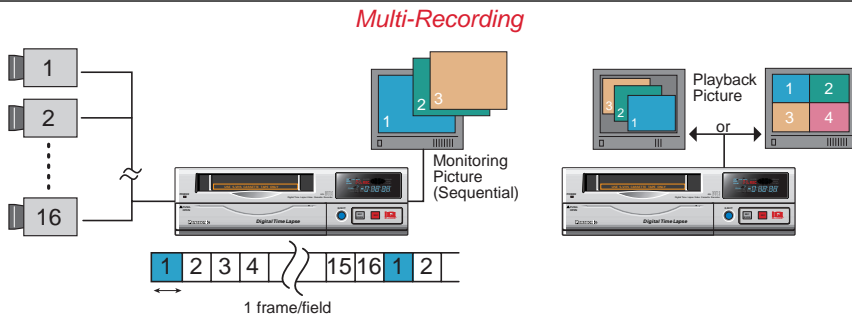
Other Convenient Features

- Summer Time Setting (auto)
- Versatile Search by Date & Time or Alarm Recording
- On-Screen Display for easy mode setting
- RS-232C terminal for PC control



Rear Panel

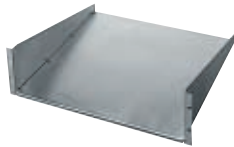
System Applications



Optional Accessories



AG-A11
Wired Remote Controller



AG-M670
Rack Mount Adaptor



AW-E300
1/3" 3-CCD Convertible Colour
Camera
(Lens: option)



WV-CP460/464
Super Dynamic II
Colour Surveillance Cameras
(Lens: option)



WV-CP160
Super Dynamic II
Colour Single-wire VP Camera
(Lens: option)

Specifications

General	
Supply voltage:	AC220V to 240V, 50 to 60 Hz
Power consumption:	35 W
Ambient operating temperature:	5 °C to 40 °C
Ambient operating humidity:	35 % to 85% (no condensation)
Dimensions (W x H x D):	380 x 110 x 340 mm
Weight:	7.2 kg
Recording system:	D-TL recording system (DV compression multi-segment recording)
Recording track:	Audio signal, Linear: 1 track
Tape speed:	20.84 mm/sec. (3-hour mode)
Tape used:	S-VHS standard tape (180-minute tape recommended)
Recording time mode:	3, 9, 12, 18, 24, 48, 72, 96, 120, 180, 240, 360, 480 and 960 hours
FF/REW time:	Less than 3 minutes (using 180-minute tape)
Video	
Horizontal resolution:	
HIGH:	More than 520 lines (B&W/COLOUR) (comb filter ON)
STANDARD:	More than 380 lines (B&W/COLOUR) (comb filter ON)
S/N ratio:	
HIGH:	Better than 50 dB (B&W/COLOUR)
STANDARD:	Better than 50 dB (B&W/COLOUR)
Camera inputs (BNC x 16):	1.0 V[p-p], 75Ω, (loop-through, 75Ω On/OFF), unbalanced
S-VIDEO OUT (4P):	
Luminance signal :	1.0 V[p-p]
Chrominance signal:	0.3 V[p-p] (Burst level)
Audio	
S/N ratio:	42 dB (3-hour mode, "A" weighted)
Frequency response:	70 Hz to 7 kHz (3-hour mode)
Recording /Playback time modes:	3, 9, 12, 18 and 24 hours
Audio input (pin jack):	-10 dBV, 47 kΩ, unbalanced
Mic input:	-60 dBV, 600Ω, unbalanced
Audio output (pin jack):	-8 dBV, 600Ω, unbalanced
Other	
REMOTE connector:	Exclusively designed for AG-A11 remote controller (optional accessory)
RS-232C connector:	D-sub 9 pins, RS232C interface

Weight and dimensions shown are approximate.
Specifications are subject to change without notice.

Panasonic

Matsushita Electric Industrial Co., Ltd.
Systems Business Group
2-15 Matsuba-cho, Kadoma, Osaka 571-8503
Japan
Tel. 81-6-6905-4650 Fax. 81-6-6908-5969
www.panasonic.co.jp/bsd

