



KX-HCM230 : Outdoor use



KX-HCM10 : Indoor use

These plug-in cameras allow you to view images from remote locations via your personal computer*¹ and an Ethernet network*². Use the KX-HCM10 network camera to view warehouse or office. You can even set up the camera in a different building than your PC. The KX-HCM230 can be installed outdoors. Use it to keep an eye on the parking lot, or to monitor traffic conditions. Panasonic network cameras are easy to install, easy to use, and perfect for a variety of business and home applications.

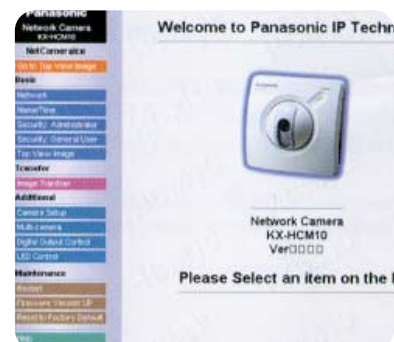
*¹ See system requirements for PC Control on back page.



- Remote pan tilt
- Preset Positioning (8)
- Click to Center



- Multi-image Display-View up to 4 cameras simultaneously
- Can be viewed by up to 10 users (HCM10) / 30 users (HCM230) simultaneously



- User changable top page and Link URL
- Alarm function capability*³
- No direct PC connection required

Small and lightweight, the KX-HCM10 and HCM230 come equipped with built-in web server, control software, and e-mail software. Simply connect the camera to an Ethernet network, and you can control it from a PC using a standard web browser.

The KX-HCM10 and HCM230 each provides up to 640 x 480 video resolution. Each offers remote pan and tilt and can automatically send e-mail when triggered by the time sensor or an optional security sensor. Up to 10 users at a time can view images from a KX-HCM10 or HCM230 (up to 30 users) camera. Using Multi-Image display, a single user can view images from up to four cameras at the same time.

KX-HCM10 (indoor use)



KX-HCM230 (outdoor use. IPX6)



Remote PAN & TILT control



Specifications

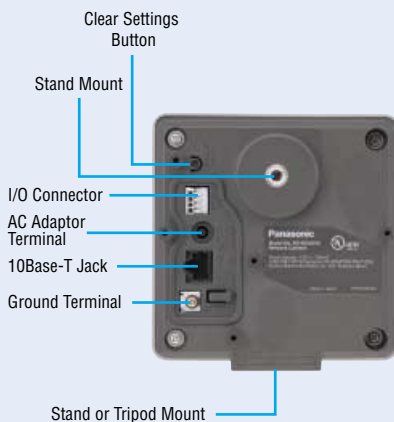
	KX-HCM10	KX-HCM230
Type:	Indoor use	Outdoor use
Max User Access:	10	30
Pan:	60° left and right	
Tilt:	0-45° down	
Preset Positioning:	8	
Image Sensor:	CMOS, 1/3 inch	
Number of Pixels:	320,000 pixels	
Horizontal View Angle:	45°	
White Balance:	Auto/Manual	
Focus:	Fixed, 1m-infinity	
Caliber Ratio:	F1.8	
Exposure:	Auto	
Illumination:	10-10,000 lux	
Video Resolution:	640 x 480, 320 x 240 (default), 160 x 120	
Video Compression:	JPEG/3 Levels	
Magnification:	100% or 150%	
Frame Rate:	Max. 7.5 frames/sec. (640 x 480) Max. 15 frames/sec. (320 x 240) Max. 15 frames/sec. (160 x 120)	
Security:	Administrator or User password protection	
Trigger of Image Transfer:	Time: (Day of the week, Hour, Minute, Second) Alarm-event (Sensor Input)*3	
Image Transfer Protocol:	SMTP	
Message Contents:	Personalized message	
Image Buffer:	About 80 Frames (320 x 240) with time display	About 540 Frames (320 x 240) with time display
Upgrade:	Via Internet connection	
Sensor I/O Connector:	Sensor Input / External device control	
Memory:	2 Mbyte RAM, 2 Mbyte Flash ROM	8 Mbyte RAM, 2 Mbyte Flash ROM
Max Bandwidth Control:	0.1 Mbps-Unlimited	
Network Connection:	10Base-T (RJ-45) x 1	
Mounting:	Wall mount, desk/ceiling mount, tripod mount	
Accessories:	AC Adaptor, Stand, 2 Screws	
Weight:	370 g	470 g
Dimensions (H x W x D):	116 mm x 115 mm x 72 mm	116 mm x 116 mm x 88 mm
Humidity:	20-80% RH, non-condensing	20-90%
Operation Temperature:	5-40°C, indoor only	-20-50°C
Consumption:	8W	6W
Voltage:	AC Adaptor Input: AC 100-240V Output: 9 VDC	AC Adaptor Input: AC 100-240V Output: 12 VDC

Connections

KX-HCM10



KX-HCM230



*1 System Requirements For PC Control

Operating System:	Windows®95, Windows®98, Windows NT®4.0 or Windows®2000, Windows®XP, Windows®Me
Network Protocol:	HTTP, FTP, TCP, UDP, IP, ARP, ICMP, DHCP, DNS
Web Browser:	Microsoft®Internet Explorer 5.0 or later

*2 The remote monitoring via the Internet requires Static Global Address from your Internet provider.
PPPoE connection requires a suitable router. For connecting via the Internet, it is necessary to use functions (port forwarding etc.) such as a router to access the camera from the Internet.
Refer to the instructions of the router.

*3 A sensor must be attached to the Network Camera in order to perform alarm function.

Note:

- Microsoft®, Windows®, Windows NT® and Windows®Me are either registered trademarks or trademarks of Microsoft Corporation in the United States and/or other countries.
- Windows® is Microsoft® Windows® operating system.
- Windows NT® is Microsoft® Windows NT® operating system.
- All trademarks referred to in this catalog are the property of their respective companies.