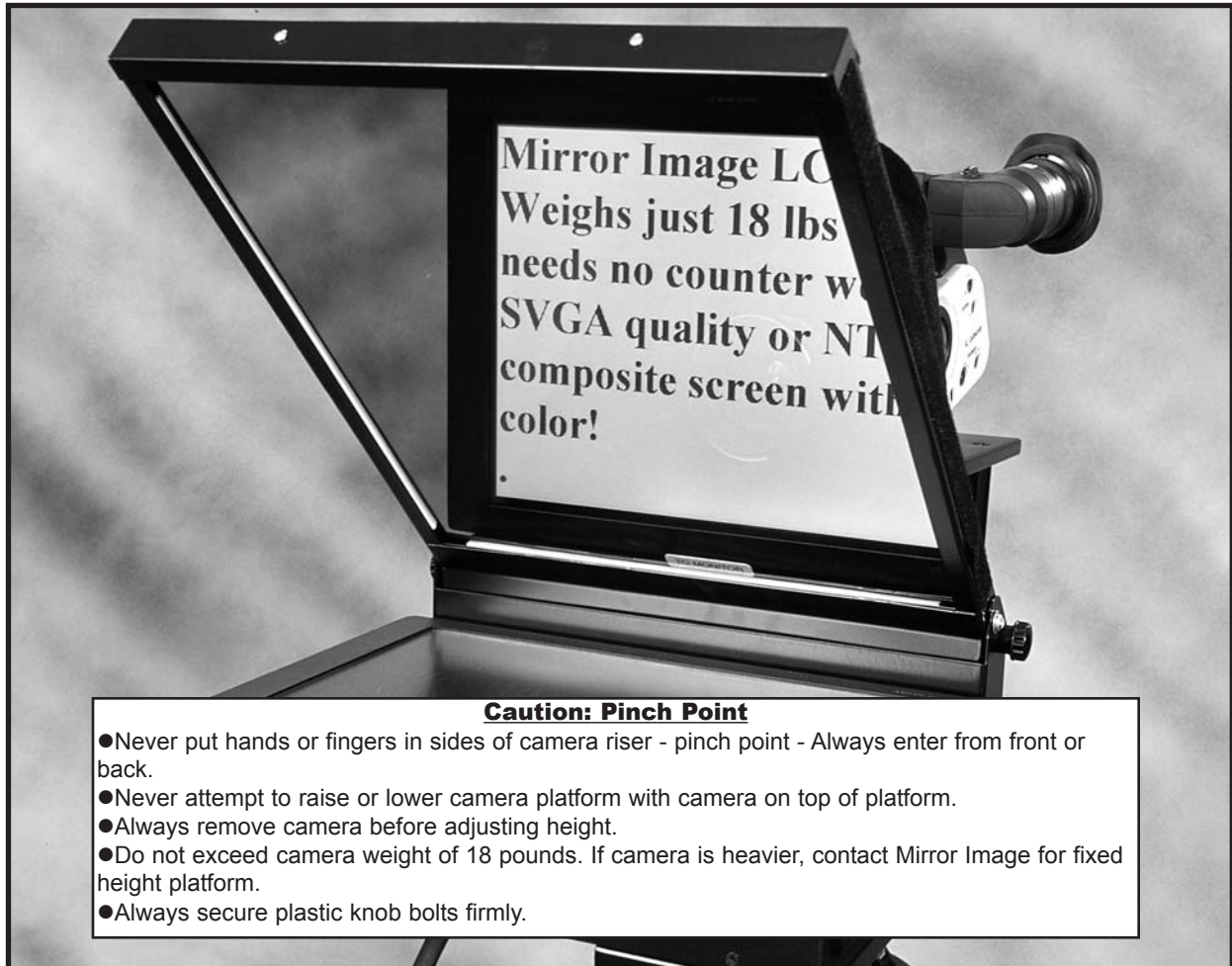


# Set up Instructions for LC Teleprompters SF/sc Teleprompters



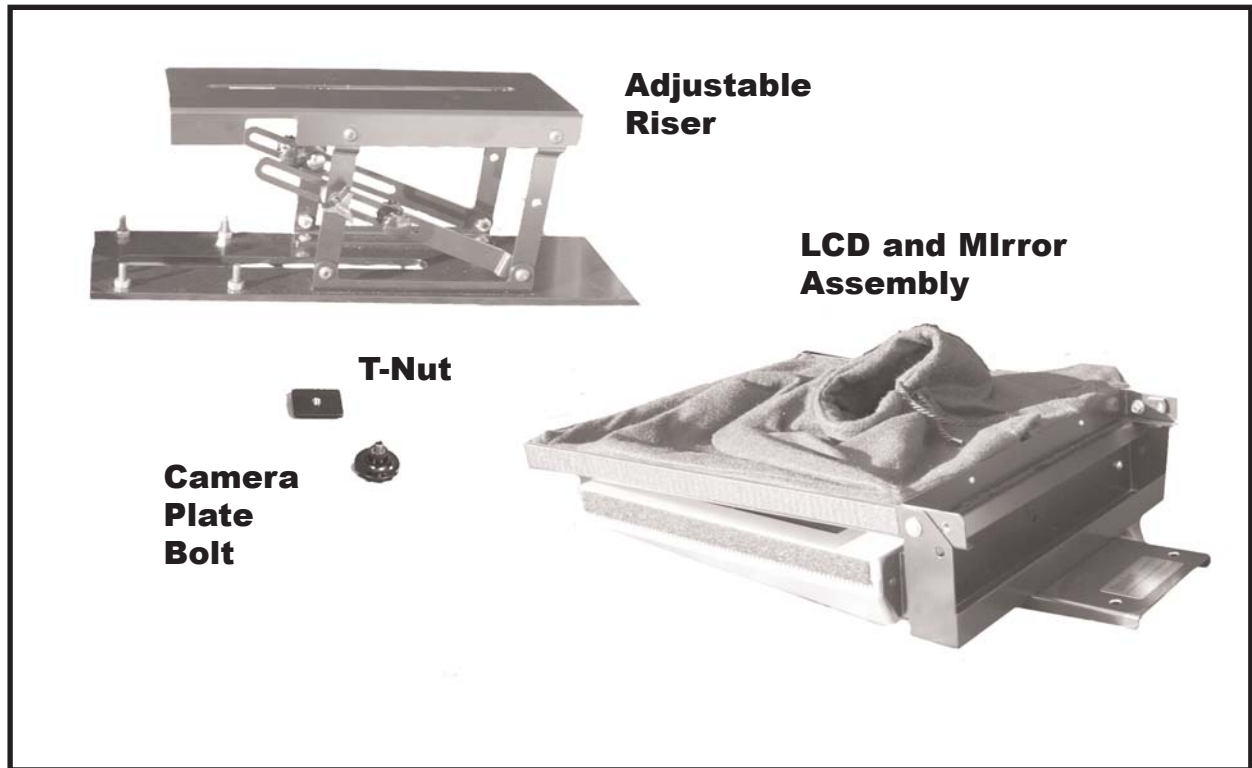
**Mirror Image Teleprompters, Inc**  
2189 Abraham Lane  
Oshkosh, WI 54904

Phone 920-232-0220  
Email: [sales@teleprompters.com](mailto:sales@teleprompters.com)  
**[www.teleprompters.com](http://www.teleprompters.com)**

# *MIRROR IMAGE* TELEPROMPTERS, INC.

MIRROR IMAGE

LC

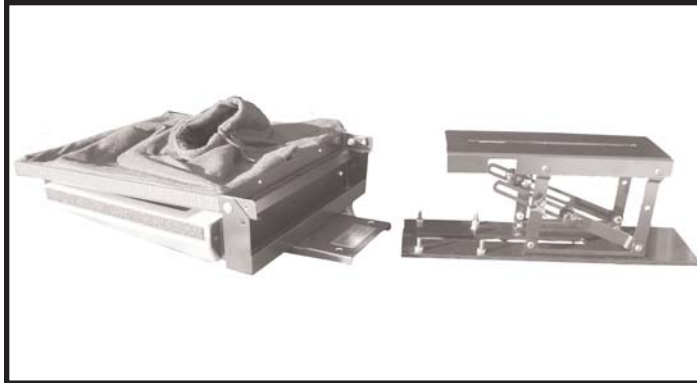


## **Step 1:**

Remove any camera plate from top of tripod and bolt the teleprompter arm onto the tripod head using the T-Nut.

Tighten securely.  
(T-Nut is an industry standard 3/8 x 16 thread size).

LC



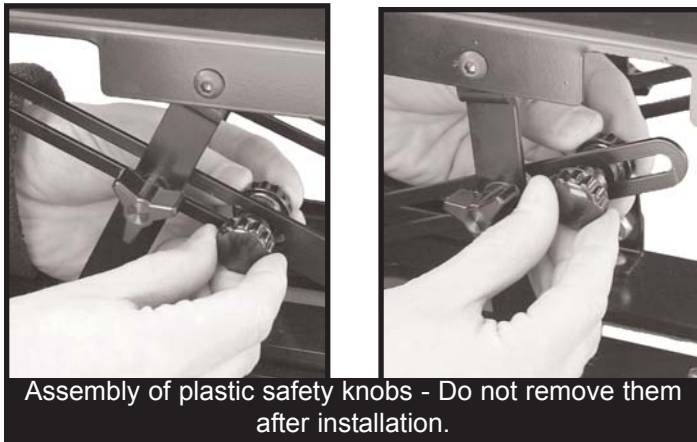
### Step 2:

Loosen four plastic knobs revealing studs. Place monitor bracket over studs and tighten the four plastic knobs in place.



### Step 3:

If your system features a telescoping camera platform, loosen plastic knobs and raise platform. Tighten knobs.



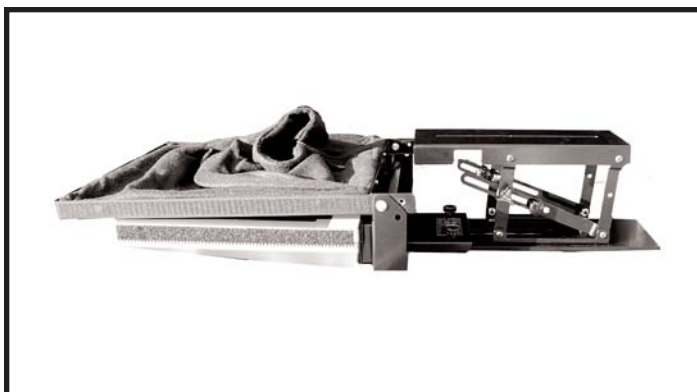
Assembly of plastic safety knobs - Do not remove them after installation.



### Warning:

#### **Caution: Pinch Point**

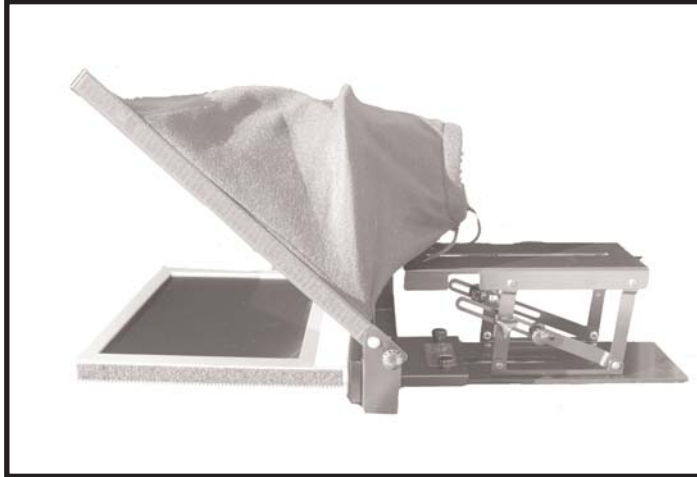
- Never put hands or fingers in sides of camera riser - pinch point - Always enter from front or back.
- Never attempt to raise or lower camera platform with camera on top of platform.
- Always remove camera before adjusting height.
- Do not exceed camera weight of 18 pounds. If camera is heavier, contact Mirror Image for fixed height platform.
- Always secure plastic knob bolts firmly.



### Step 3a:

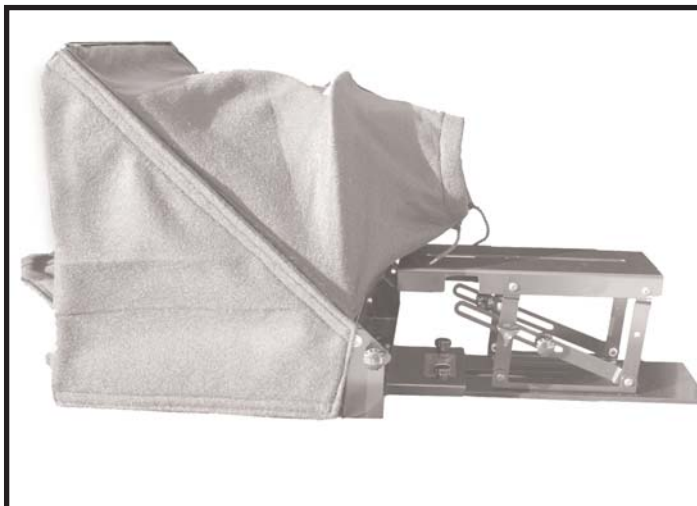
Attach camera plate to arm riser using camera plate bolt. This can be adjusted later.

LC



**Step 4:**

Unfold hood/mirror. Secure in place with threaded studs. Place camera lens in felt opening and secure draw string.



**Step 5:**

Do a final balance check and adjust if needed. Plug in the monitor and connect to computer. Be sure to connect an scan converter/splitter, reverse box as needed.