

JVC

PROFESSIONAL

10.4" LCD COLOUR
VIDEO MONITOR

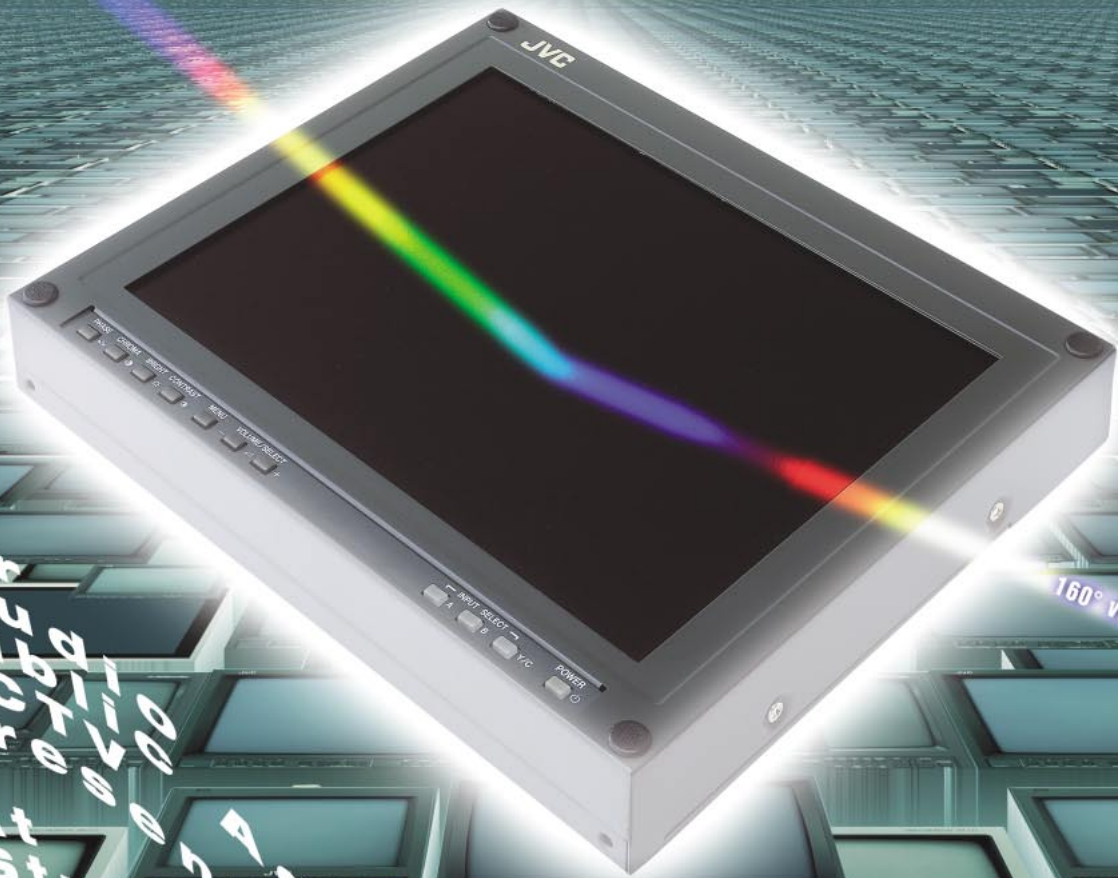
LM-10W

Bright, High-performance
10.4-inch LCD Colour Video
Monitor



- Fully-featured professional LCD video monitor
- PAL/NTSC compatibility
- Wide viewing angle of 160°
- World-wide power operation 120/230V AC
- Low power consumption
- On-screen menu for precise picture adjustment
- Compact, rugged metal cabinet
- Variety of optional accessories
- Dual rack-mountable in a 19" EIA rack

Bright, High-performance 10.4-inch LCD Colour Video Monitor for Professionals



160° viewing angle

SSO
Pstr
PCUR
PCUR
PCUR
At
Stu
Pub
Offi
Sho
Airp
Airp
Car
Ship
Train, etc.

etc.

Designed and engineered for a wide range of demanding professional applications, the LM-10W LCD monitor is a product of JVC's world-beating technologies and experience in providing practical display solutions. Brimming with operational features and delivering bright, crisp pictures from an advanced 10.4-inch LCD, the LM-10W allows a wide viewing angle of 160 degrees. Multi-format compatibility and universal mains input also mean that you can use the monitor anywhere in the world. For enhanced durability, the LM-10W is housed in a tough metal cabinet and a wide range of options that allow for differing installation configurations.

■ **The LCD Advantage**

A liquid crystal display (LCD) has many advantages over a conventional Cathode Ray Tube (CRT) monitor. An LCD of the same screen size as a CRT is lighter, thinner, and consumes less power, which translates into enhanced flexibility in terms of system and installation. An LCD also has a longer life at 50,000 hours. Even then, to recover the original display brightness you need only replace the back light. And as it is immune to electromagnetic radiation, there are virtually no limitations on where it can be installed and used. Together, these benefits give an LCD monitor powerful advantages over a CRT monitor.

■ **Bright 10.4-inch TFT LCD**

The LM-10W comes with a 10.4-inch TFT LCD that delivers an exceptionally bright picture of 250cd/m², which can be viewed in an environment with strong ambient light. A wide display angle of 160 degrees offers easy viewing and eliminates the common shortcoming of the small viewing angle of previous LCDs. Add a fast-response panel and you have a powerful monitor for a wide variety of business

applications. The picture size is larger than you might expect because a displayed image occupies the entire area of the flat-screen. 10.4-inch LCD, the effective display area is equivalent to that of a 12-inch CRT.

■ **Aspect Changeover**

The LM-10W provides aspect changeover capability via on-screen menu for 4:3/4:3 underscan/16:9 aspect ratios.

■ **On-screen Menu**

The LM-10W adopts a user-friendly On-Screen Menu. A Direct-access key lets you instantly adjust PHASE, CHROMA, BRIGHTNESS, and CONTRAST.

■ **Multi-format Compatibility**

JVC's LM-10W has a built-in auto-detection function, which identifies whether input signals are PAL or NTSC, and automatically switches mode accordingly.

■ **Worldwide Power Operation**

You can operate the LM-10W from an AC mains supply anywhere in the world. Automatic universal mains input selects

the correct input voltage in the range from 120 to 230 volts AC. So, all you have to do is plug the monitor into the mains and switch it on.

■ **Space-saving, Rugged Cabinet**

Making the most of the advantage of a thin LCD, JVC has made the LM-10W approximately one-quarter of the depth of a conventional CRT. For users, that means easy installation at a wider range of locations, as well as an elegant, neat appearance. The monitor is housed in a tough metal cabinet for durability and long life.

■ **Wide Choice of Optional Accessories**

The LM-10W is offered with a wide array of accessories for the convenience of users. Options include desk stand, wall-mounting fittings, and a dual mount adapter for the popular EIA 19-inch rack.

■ **Aspect Ratio Switching**

The aspect ratio can be changed between 4:3 and 16:9 at the flip of a switch.



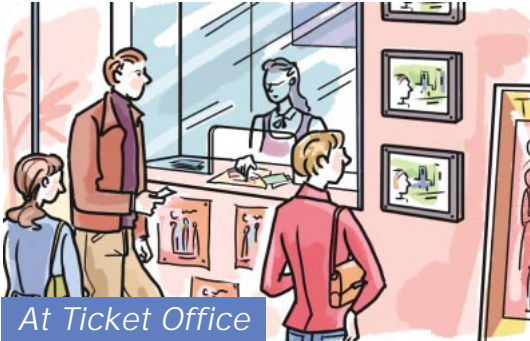
At Studio



At Conference



At Store



At Ticket Office

Specifications

Model	LM-10W
Type	10.4" Colour LCD Video Monitor
Video system	PAL/NTSC
LCD panel	Panel size 10.4" diagonally measured
	Screen size 211.2 (W) x 158.4 (H)mm
	Resolution Horizontal 640 x Vertical 480 pixels
	Pixel pitch 0.33mm
	Aspect ratio 4:3
	Viewing angle 160°
	Display colours 262,144 (RGB each 64 levels)
	Brightness 250cd/m ² (typical)
	Contrast ratio 150:1 (typical)
	Response time 50ms (typical)
Power requirement	120/230V AC, 50/60Hz
Power consumption	0.44A (120V)/0.28A (230V)
Input connectors	
Input A composite	1 line, BNC connectors x 2 1.0V (p-p), 75 ohms, negative sync, auto-termination, bridged output possible
Input B composite	1 line, BNC connectors x 2 1.0V (p-p), 75 ohms, negative sync, auto-termination, bridged output possible
Y/C	1 line, mini-DIN 4-pin x 2 Y: 1.0 V(p-p), 75 ohms, negative sync C: 0.3 V(p-p) 75 ohms (PAL Burst) 0.286 V(p-p), 75 ohms (NTSC Burst) auto-termination, bridged output possible
Audio	1 line, RCA pin x 2 for input A/B and Y/C common use, 500mV rms, high-impedance, bridged output possible
Audio speaker	7 x 4cm oval, 0.5W output
Weight	2.5kg
Dimensions (WxHxD)	259 x 216 x 89.5mm

Options



■ RK-C10L1G
Rack Mount Adapter



■ TS-C10L1G
Stand Unit



■ TS-C10L2G
Wall Mounting Unit



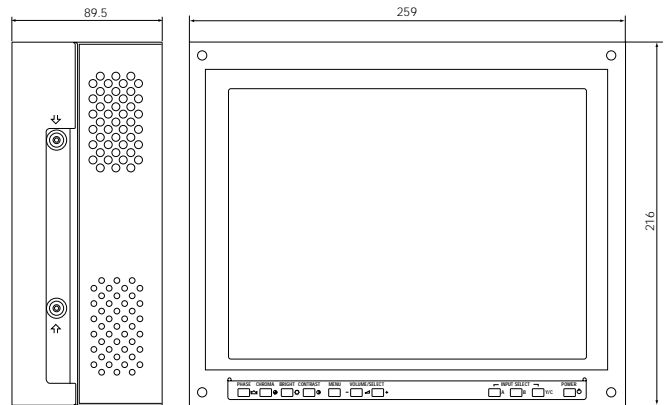
■ TS-C10L3G
Ceiling Suspension Unit



■ TS-C10L4G
Multi Frame

Dimensions

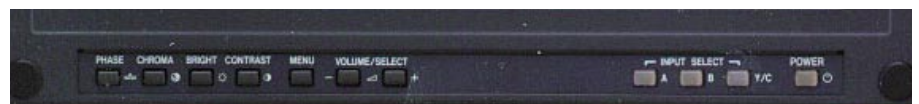
Unit: mm



Rear View



Front Control



JVC

VICTOR COMPANY OF JAPAN, LIMITED

DISTRIBUTED BY

Design and specifications subject to change without notice.