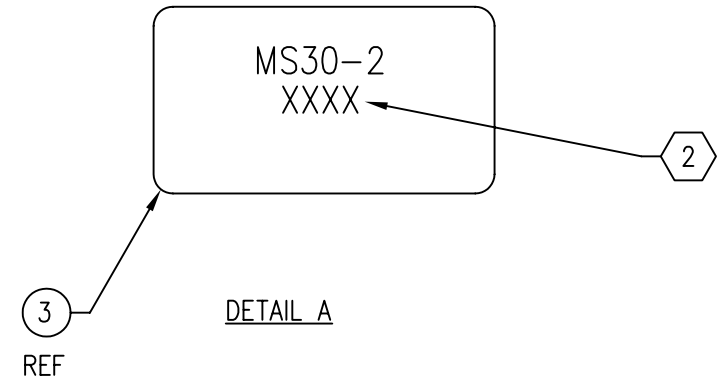
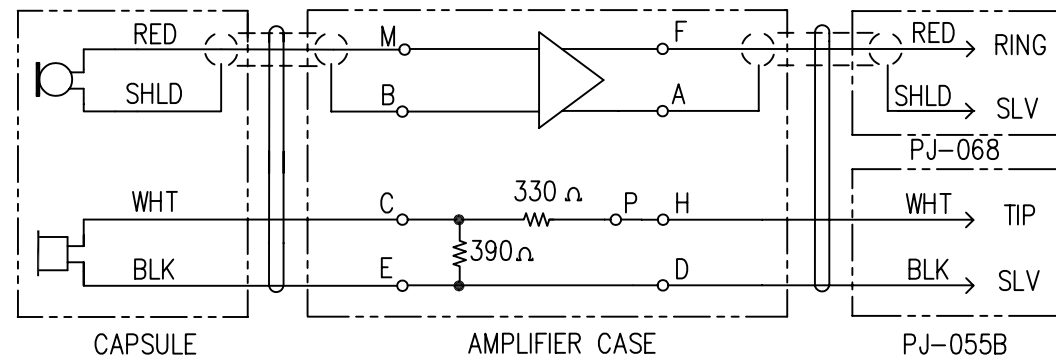


REVISION					
REV	DESCRIPTION	ECO NO.	DATE	BY	CHK'D BY
J	CORRECT ERROR.		12/28/05	JB	ME

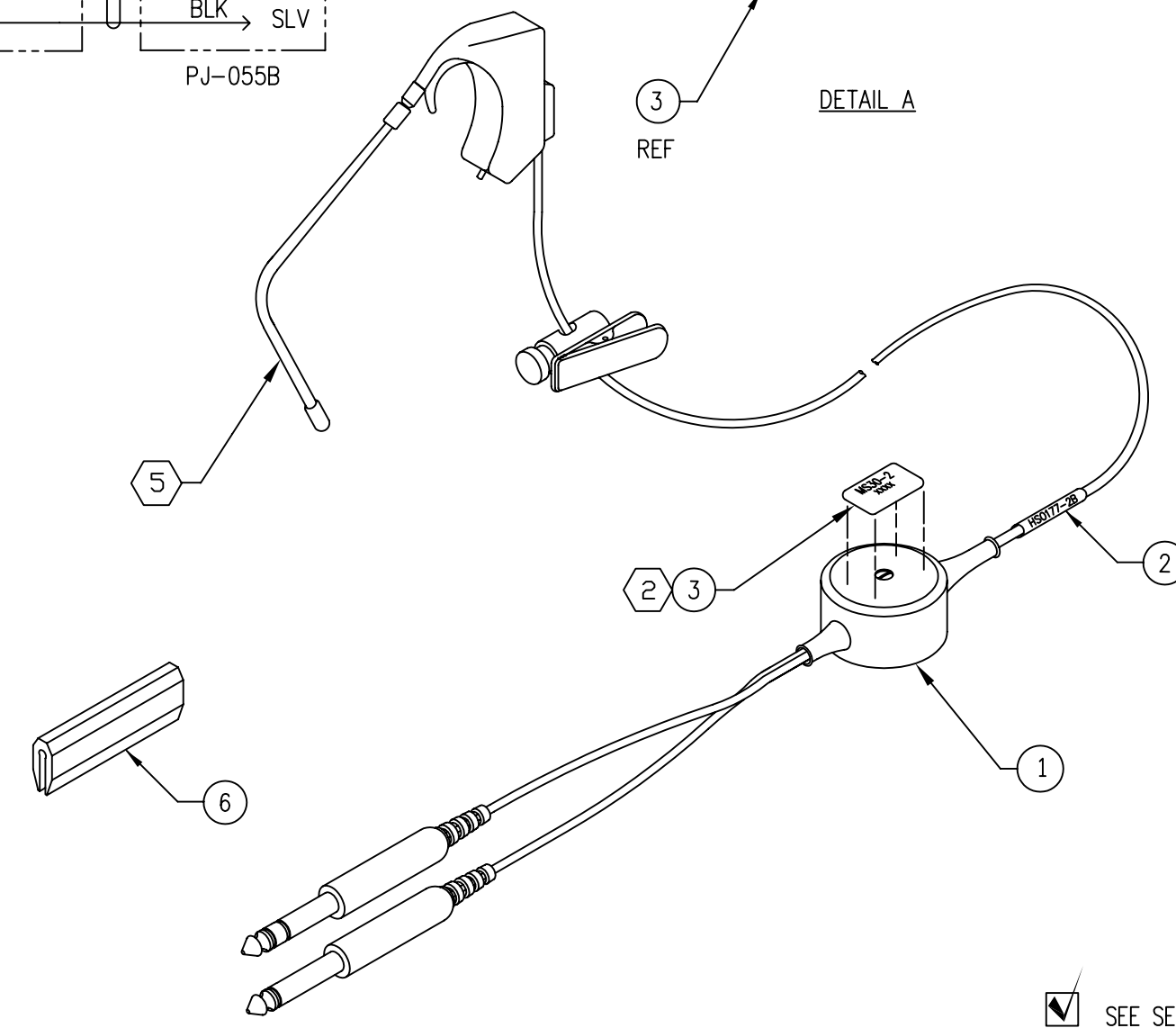
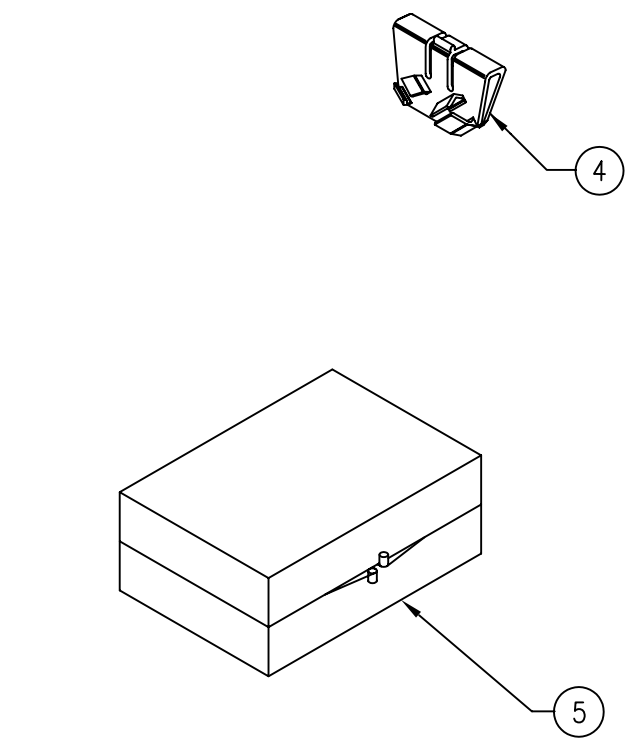


3 REF
DETAIL A

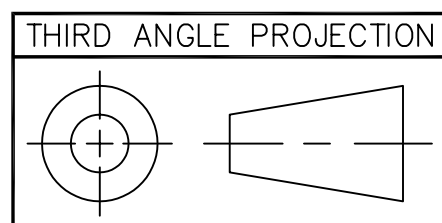
REFERENCE SPECIFICATIONS:
- AT 1 kHz -

TRANSMITTER	
OUTPUT AMPLITUDE	-22.2 ± 3 dBV (55 TO 110 mV RMS) INTO 150 OHMS WITH 44 mA DC FLOWING AND AN INPUT OF 94 dB SPL.
RECEIVER	
OUTPUT AMPLITUDE	92 ± 5 dB SPL INTO A BRÜEL & KJAER TYPE 4157 EAR SIMULATOR USING A DP0 370 EAR PLUG SIMULATOR, EARTUBE PN 15833-01, AND AN OPEN-CIRCUIT INPUT OF 155 mV RMS THROUGH 600 OHMS.
CABLES	
CAPSULE	5 FEET.
CONNECTORS	5 INCHES.
CONNECTORS	
MIC	PJ-068
RCVR	PJ-055B
COLOR	BLACK.
WARRANTY	ONE YEAR.

SEE SEPARATE BILL OF MATERIALS MATING PART. SEE NOTE



- 4 THIS UNIT IS EQUIPPED WITH A LOW-IMPEDANCE TUBE, PN 06433-00.
 - 3. THIS IS A STARSET EQUIPPED WITH AN MS50/T30-2 AMPLIFIER AND CABLE & CONNECTOR ASSEMBLY.
 - 2 IMPRINT THE MODEL NO., DATE CODE, & PRODUCT ID ON THE LABEL (ITEM 3). AFFIX LABEL OVER THE SCREW IN THE TOP OF THE HOUSING.
 - 1. IMPRINT THE MODEL NO. AND DATE CODE ON THE LABEL (ITEM 2). WRAP LABEL AROUND THE CABLE IN THE APPROXIMATE LOCATION SHOWN.
- NOTES: (UNLESS OTHERWISE SPECIFIED) REF 05272, 05446, 91720



UNLESS OTHERWISE SPECIFIED DIMENSIONS ARE IN: INCHES AND TOLERANCES ARE: DECIMAL .XX = ± .01 .XXX = ± .005 ANGLE = ± 2° FRACTION = ± 1/16	DO NOT SCALE		PLANTRONICS Santa Cruz, Ca. TITLE MODEL MS30-2
	DRAWN BY J. BAKER 03/21/00 CHECKED BY M. ERBE 03/21/00 DEV ENG APPD RMS 03/24/00 MFG APPD PROD ENG APPD		
MATERIAL:			SIZE
FINISH:			CAT CODE
			DWG NO.
			REV.
			SCALE 1=1
			SHEET 1 OF 1

Special Products Packed-Level Bill of Materials

Model Number: MS30-2

Part Number: 90166-01

Revision: J

Date: 12/28/05

Receiver Configuration: Monaural

Connector: PJ-068 and PJ-055B

Capsule Type: SSI

Configuration:

Description: This is a Starset equipped with an MS50/T30-2 amplifier and cable & connector assembly.

[View Drawing](#) (only available when viewing BOM online in Word format)

ITEM	QTY	PLANTRONICS PART NUMBER	DESCRIPTION
1.	1	100800-01	HEADSET ASSEMBLY
2.	1	28226-01	LABEL, MODEL NO. & DATE CODE
3.	1	100905-02	LABEL, PRODUCT ID
4.	1	07169-00	EYEGLOSS CLIP ASSEMBLY
5.	1	06448-00	EARPIECE KIT
6.	1	10822-00	KIT, GLASSES BOW ADAPTER
7.	1	66107-01	BOX, UNIVERSAL
8.	1	49677-01	USER'S GUIDE
9.	1	40637-01	POUCH