

STREAMFACTORY X2 PRO SPECIFICATIONS

Video Inputs /Outputs

- SDI (CCIR-601)
- DV/1394
- Composite
- Component (YUV)
- Y/C
- SDI Active Loop output

HiQ Video Pre-Processing

- Median Noise Filtering
- High-quality de-interlacing
- Film compensation

Audio Inputs

- Embedded (SDI)
- DV (Embedded)
- AES/EBU
- Balanced stereo XLR
- Unbalanced stereo analog
- Embedded SDI audio out
- 24-bit A/D conversion @ 48 kHz sampling rate

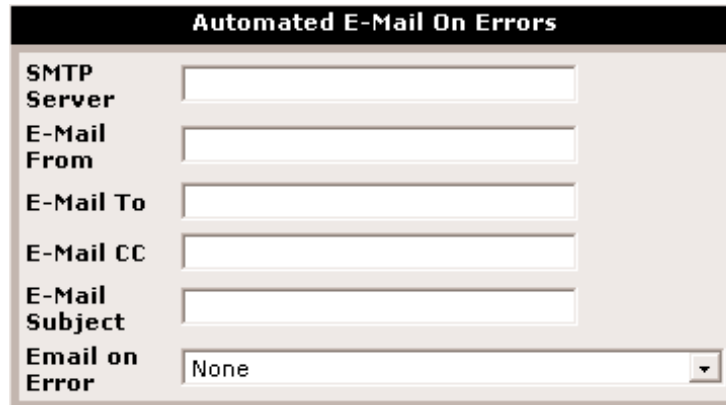
HiQ Audio Pre-Processing

- Low Shelf, High Shelf, Mid-band Parametric
- QuadBand Dynamics
- Expander/Gate
- Compressor/Limiter
- AGC
- Hi-Z headphones out
- HiQ AudioMaster GUI

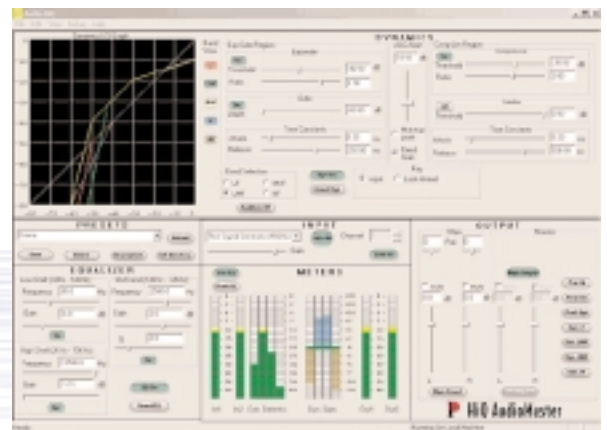
System

- Real and Windows Media MultiStream
- Sorenson Broadcaster for Windows application
- Dual CPUs with 512 MB registered RAM
- 10/100 Mbs LAN (2nd LAN available internally)
- Internal system HDD and removable HDD carrier (2nd data drive is optional)
- Slimline CD-RW
- 1-RU (19" w x 24" d x 1.75" h)
- Proprietary turbine cooling duct and heatsink to ensure ultra-high reliability
- 90-240 VAC 50/60 Hz auto-sensing
- Optional -48VDC supply for Telco applications

In addition to the above, StreamFactory X2 Pro ships standard with RemoteManager version 2 application. This application provides extensive management and control of one or more StreamFactory systems from a remote PC*. New capabilities include support for 3rd-party broadcast automation control, including Louth, Odetics and Sony BVW-75 protocol, as well as Pinnacle's own open SDK/API for third-party application developers.



With all these capabilities, it's no wonder that leading broadcasters and content delivery networks around the world are standardizing on StreamFactory as the backbone of their encoding plant. Companies such as RealNetworks, AT&T Digital Media Services, Eutelsat, Telenor, Esperia, Speedcast, Aliant Telecom, China Telecom and NTT are just a few of the leading broadband service providers that recognize the proven value of the StreamFactory family of broadband encoders.



To learn more about StreamFactory and what it can do for you, visit the Pinnacle Systems website at www.pinnaclesys.com.

**Sorenson Broadcaster for Windows is a stand-alone application that runs independently of the StreamFactory RemoteManager application. For best streaming performance, these two applications should not run concurrently.*

ORDERING INFORMATION

STREAMFACTORY X2 PRO
PPN #14500250A



www.pinnaclesys.com

Pinnacle Systems, Inc. 280 N. Bernardo Avenue, Mountain View, CA 94043 • <http://www.pinnaclesys.com>
• Phone 1-800-4PINNACLE 650-526-1600 • Fax 650-526-1601 • Pinnacle Systems Northern Europe (UK) + 44 (0) 1895 442003 • Central Europe (D) + 49 (0) 69 50 93 04 20 • Netherlands (NL) + 31 (0) 20 624 31 95 • Southern Europe & Middle East (FR) + 33 (0) 1 46 12 03 12 • Scandinavia (S) + 46 (8) 380 427 00 • Latin America & the Caribbean (954) 385-1760 (U.S.A.) • Pacific Rim ++ 65-284-2336 (Singapore) • China 85 (10) 6641 0063 (Beijing) • Japan ++ 81 (3) 5465 0646

© September 2001 Pinnacle Systems, Inc. All Rights Reserved. Pinnacle Systems, the Pinnacle Systems logo, StreamFactory and StreamFactory X2, StreamFactory X2 Pro, HiQ, HiQ AudioMaster, and QuadBand are all trademarks of Pinnacle Systems, Inc. All other trademarks are the property of their respective owners. Specifications are subject to change without notice or obligation.