

Touch Pen

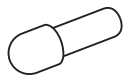
This product is intended for use only with a touch panel.

Warnings

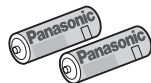
- **Never attempt to disassemble or modify this product.**
To avoid fire, shock, or failure.
- **Be careful not to grasp the infrared-ray-emitting area of the touch pen while using it. This may result in incorrect operation.**
- **Do not press the pen tip down with excessive force.**
- **The pen may not work correctly if there is an intense light source or equipment employing infrared rays nearby. Keep as far away from such light sources as possible.**
- **Do not operate the touch pen simultaneously with the remote control for a TV or VCR. Incorrect operation may result if operated simultaneously.**
- **If the touch pen surface becomes soiled, gently wipe off the soiling with a soft cloth.**
If the surface becomes extremely soiled, soak a cloth in neutral detergent diluted with water, wring out the cloth well, wipe off the surface with the cloth, and then finish by wiping with a dry cloth. Be careful not to let water drops get inside the equipment, as this may cause it to malfunction.
- **If the touch pen will not be used for a long time, remove the batteries to conserve their energy.**

Accessories

Pen tip (3)



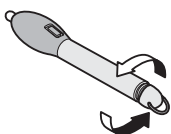
battery (2)



Battery installation

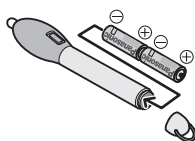
How to install Batteries

1 Remove the battery cap.



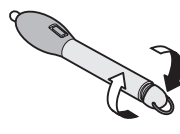
Rotate the cap counter-clock-wise to remove.

2 Insert batteries.



Be sure to insert with the correct orientation.

3 Refit the battery cap.



Rotate the cap clockwise to refit.

Precautions on battery use

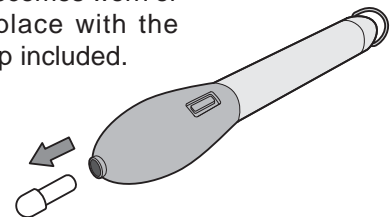
Incorrect installation can cause battery leakage and corrosion that will damage the touch pen.

Observe the following precautions:

1. Batteries should always be replaced as a pair. Always use new batteries when replacing the old pair.
2. Do not combine a used battery with a new one.
3. Do not mix battery types (example: "Zinc Carbon" with "Alkaline").
4. Do not attempt to charge, short-circuit, disassemble, heat or burn used batteries.

Touch pen tip replacement method

If the pen tip becomes worn or damaged, replace with the replacement tip included.

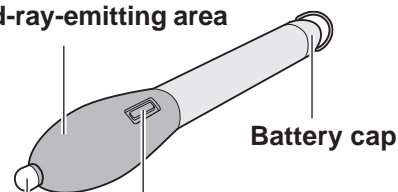


Pull out the old pen tip and replace with a new one.

Naming / Use

Turn on the selection switch at the rear of the touch panel.

Infrared-ray-emitting area



Function switch

Press this to use the functions that can be set in "Touch Panel Setting Program" menu.
(Please refer to the operating instructions of touch panel)

Pen tip

Pressing the pen tip performs the same operation as clicking the left button of the PC mouse.

Touch Pen ID setting and use

In order to use multiple touch pens and touch panels in close distance, it is necessary to set ID numbers for each touch pen and touch panel setting, so that all pens can be operated without interfering with each other.

Prior to touch pen ID setting

Carefully read the Manual for the touch panel, and then continue with the following procedure.

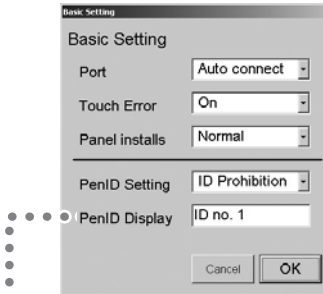
- 1** Turn on the power to the plasma display and PC, in that order.
- 2** Switch the plasma display input to PC.
- 3** After the PC has finished starting up, open "Touch panel setting program" from the "Task Bar" on the PC screen, and click on the "Basic Setting" button.

Touch Pen ID setting

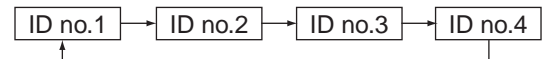
Perform the following operation on the touch panel within 5 meters. (16.4 feet)

- 1** Turn the battery cap of the touch pen counter-clock-wise and remove it. (Be sure that batteries keep staying in the touch pen.)
- 2** Hold the touch pen so the pen tip is facing downwards, press and hold the pen tip, and perform the following operation.
 - 1** Refit the battery cap and wait for at least 2 seconds.
 - 2** Slowly press the function switch 3 times.
- 3** Release the pen tip.
- 4** Slowly press the function switch 3 times.
- 5** Press the pen tip. The touch pen will enter the ID setting mode.

- 6** Press the function switch, and set the ID number.



By pressing the function switch on the touch pen, ID number can be changed with the following sequence.

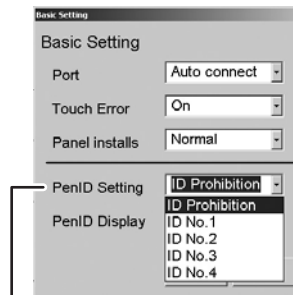


- 7** Press the pen tip. ID number will be set.

Be sure to follow the above procedure when changing ID numbers.

Touch Panel setting for Pen ID

Press "Pen ID Setting" on the "Basic Setting" screen.



- ID prohibition : Recognizes the signals from any touch pens regardless the Pen ID.
- ID no. 1 4 : Recognizes the signals only from the touch pens with the same ID.

Specifications

Battery	LR03, AAA, R03 ... 2 pcs
Battery life	Approx. 500 hours (With 1 operation per second, using 750 mAh alkaline dry cells)
System	PIC microcomputer control, Infrared data transmission system
Transmitted information	ON/OFF status of pen tip switch ID (Identification no.)
Data transmission time	Approx. 10 ms (1 block of data)
IDs (Identification nos.)	4 nos.
ID setting method	Pen : Set in ID setting mode Touch panel : Set with touch panel setting program
Infrared wavelength	940 nm
Burst frequency	38 kHz
Number of infrared LEDs	3
Transmission distance	Approx. 5 m