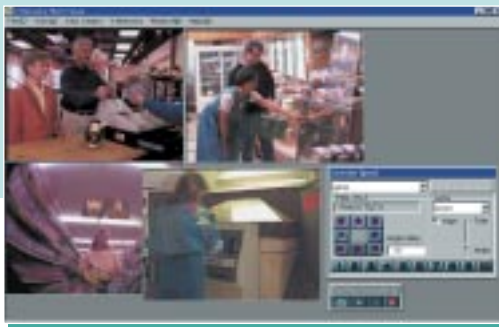


From Multi-Camera Browsing To Remote Viewing And Distribution, JVC's Powerful Software Packages Maximize Your Net Camera's Potential

Multi-Camera Browser Software VN-S200U



VN-S100U

Web Server Software VN-S10WU



<http://www.jvc-victor.co.jp/english/pro/vnetworks/index-e.html>

Features

VN-S200U/VN-S100U

Multi-Camera Browser Software Ideal For Security And Surveillance Applications

- ❖ Multi-Camera Display
(VN-S200U: Up to 16 windows, VN-S100U: Up to 4 windows)
- ❖ Easy Point-and-Click Operation
- ❖ Timer Recording (VN-S200U)
- ❖ Versatile Alarm Functions
- ❖ Sequential Switching
- ❖ Recording/Playback
- ❖ Time Stamp & Camera Name Display
- ❖ Pan/Tilt/Zoom Control

VN-S10WU

Web Server Software For Realtime Webcasting and Distribution

- ❖ Internet Connectivity
- ❖ Simultaneous Access From Up To 256 Clients
- ❖ Multiple User Access Time Management
- ❖ Optimal Security With Three Levels Of Password
- ❖ Pan/Tilt/Zoom Control

For use with these V.NETWORKS:

VN-A1U

- VN-S200U
- VN-S100U



VN-C30U

- VN-S200U
- VN-S100U



VN-C2U

- VN-S200U
- VN-S100U
- VN-S10WU



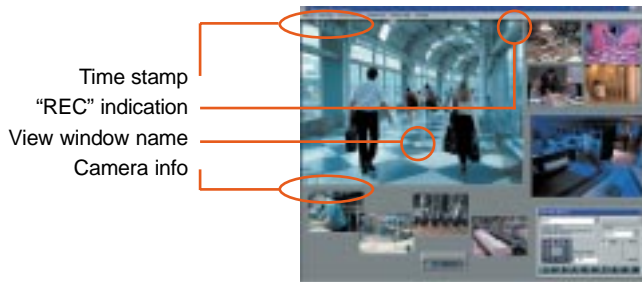
VN-C1U

- VN-S200U
- VN-S100U
- VN-S10WU



Easy-To-Use Software Puts You In Control

VN-S200U/S100U: Multi-Camera Browser Software



❖ Multi-Camera Display

Lets you display multiple camera images (16 windows for VN-S200U, 4 windows for VN-S100U) in separate windows on a single screen. With the VN-S200U, you can register up to 256 cameras by assigning 16 cameras to each window.

❖ Easy Point-and-Click Operation



With our exclusive Management Explorer, you can control and adjust all your V.NETWORKS cameras with simple point-and-click operation.

❖ Timer Recording (VN-S200U)

You can set the VN-S200U to start recording images to the hard disk at specified times with weekly and daily setting options available. For maximum versatility, up to 5 different timer settings can be programmed for each view window.

❖ Versatile Alarm Functions

Ideal for security applications, the VN-S200U/S100U can be connected to an infrared sensor or door alarm and pre-set to execute a variety of operations whenever an alarm signal is received. These include recording, message pop-up, or changing window size. Pre/Post Alarm Playback is provided for easy access to alarm recordings.

❖ Sequential Switching

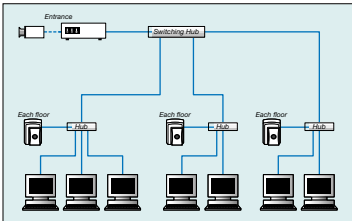
This feature makes it easy to monitor multiple camera images by automatically switching the source camera at designated intervals.

❖ Other Features

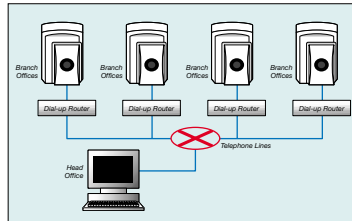
- Recording/Playback On Hard-disk
- Time Stamp & Camera Name Display
- Pan/Tilt/Zoom Control
- Dial-Up Connection Wizard

❖ System Examples

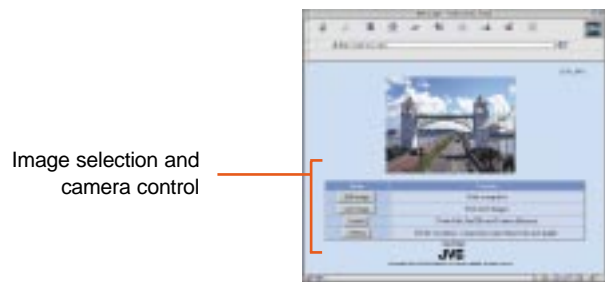
LAN System (Local monitoring system)



WAN System (Remote monitoring system)



VN-S10WU: Web Server Software



❖ Internet Connectivity

With VN-S10WU Web server software, you can distribute live images directly from a V.NETWORKS camera over the Internet.

❖ Simultaneous Access From Up to 256 Clients

A powerful solution for high-traffic visual distribution systems hosted by ISPs or portal sites, the VN-S10WU web server can deliver smooth images from 16 individual V.NETWORKS cameras to as many as 256 client systems.

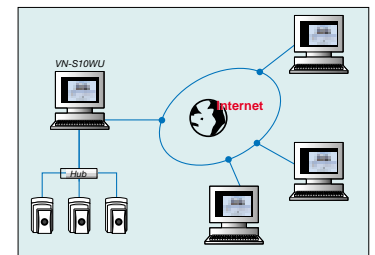
❖ Multiple User Access Time Management

To ensure the camera control exclusively by a single user, it is possible to restrict individual access time to any length of time from 1 to 300 seconds.

❖ Optimal Security With Three Levels Of Password

Three different user levels with password are available: (1) User: image browsing only, (2) Operator: (1) plus pan/tilt and zoom control, (3) Administrator: (1) and (2) plus picture quality and network setting adjustment.

❖ System Example



❖ Other Features

- Pan/Tilt/Zoom Control
- Picture Quality Adjustment

Specifications

Model	VN-S200U	VN-S100U	VN-S10WU
Compatible camera	VN-C1U/C2U/C30U/A1U		VN-C1U/C2U/C3U**
Number of camera windows that can be displayed simultaneously	16 (max.)	4 (max.)	
Number of users that can access simultaneously			256 (max.)
Number of cameras that can be registered	256 (max.)	16 (max.)	16 (max.)
Number of units that can be connected for sequential switching	16 (max.)	4 (max.)	
System requirements	OS	Windows® 95/98/NT4.0 (SP4 or later)/2000/XP*	Windows® NT4.0 (SP4 or later)
	CPU	Pentium II 333 MHz or higher (Pentium III 500 MHz or higher recommended)	Pentium III 500 MHz or higher
	Memory	128 MB or more	
	Hard disk space	10 MB or more	20 MB or more
Display/Video Card	640 x 480 pixels or more, High Color (16 bit) (1024 x 768 pixels or more, True Color (32 bit) recommended)		640 x 480 pixels or more, High Color (16 bit)

* When operating with the VN-C30U in MPEG1 mode, Windows® NT4.0 (SP or later)/2000/XP is only compatible.
** VN-C3U is no longer in production.



DISTRIBUTED BY V.NETWORKS Website: <http://www.jvc-victor.co.jp/english/pro/vnetworks/index-e.html>

E.&O.E. Design, dimensions and specifications are subject to change without notice.