

Panasonic

Closed Circuit Video Equipment

Network Interface Unit WJ-NT104



Monitoring enters the global network era

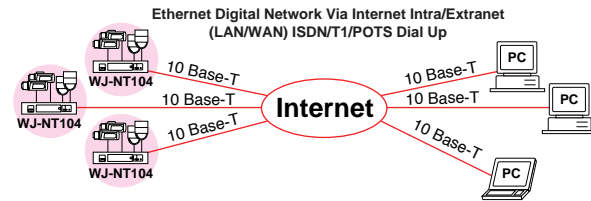
Monitoring on a PC from anywhere via Network (LAN / WAN or the Internet).



The WJ-NT104 unit is fully equipped with image capture, JPEG, and HTTP server functions. It can provide images from up to four video sources with a 10BASE-T Ethernet Network.

Multiple site monitoring can be conducted from multiple location (PC), enabling you to configure monitoring setups to suit your requirements.

The WJ-NT104 supports PC-based monitoring via a LAN / WAN or the Internet, enabling it to be used as part of an extremely flexible monitoring configuration. The WJ-NT104 overcomes time and location constraints, and can also be used as a tool for information service and other applications, in addition to basic monitoring applications.



Monitoring System



Sites can be monitored from any desk, allowing precise, real-time checks of current activity.



at School



at Factory / Office



at Parking-lot



at Hospital / Day Care Center

Information Service



Local images can be distributed over network allowing sites to provide attractive, real-time images at each independent PC work station.



Traffic Information Service



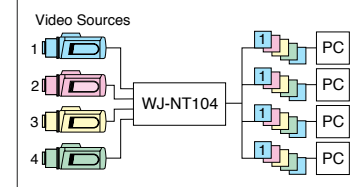
Live Image Service

Select from four operating modes to suit your requirements

Up to four video sources can be connected to a single WJ-NT104 unit. Four modes (listed below) are available for effective use of input from multiple video sources. Different modes can be selected to suit your requirements.

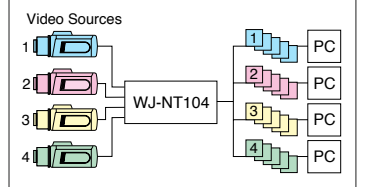
View distributed images : RANDOM INPUT SELECTION MODE

This mode sends the same channel (the last one selected) to all users. If a user selects a new channel, the channel switches on other users' screens as well.



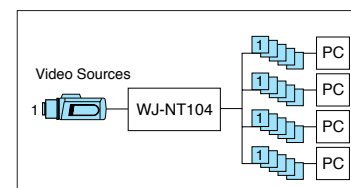
View images individually : MULTIPLE INPUT SELECTION MODE

This mode allows each user to view the individual channels he/she has selected. The channels do not change even if other users select different channels.



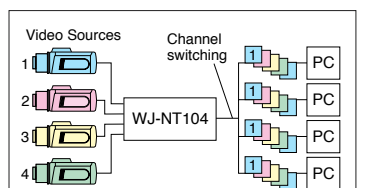
Supervisor can specify images : FIXED INPUT SELECTION MODE

This mode sends the same channel specified by the supervisor to all users. Channels cannot be switched at the user level.



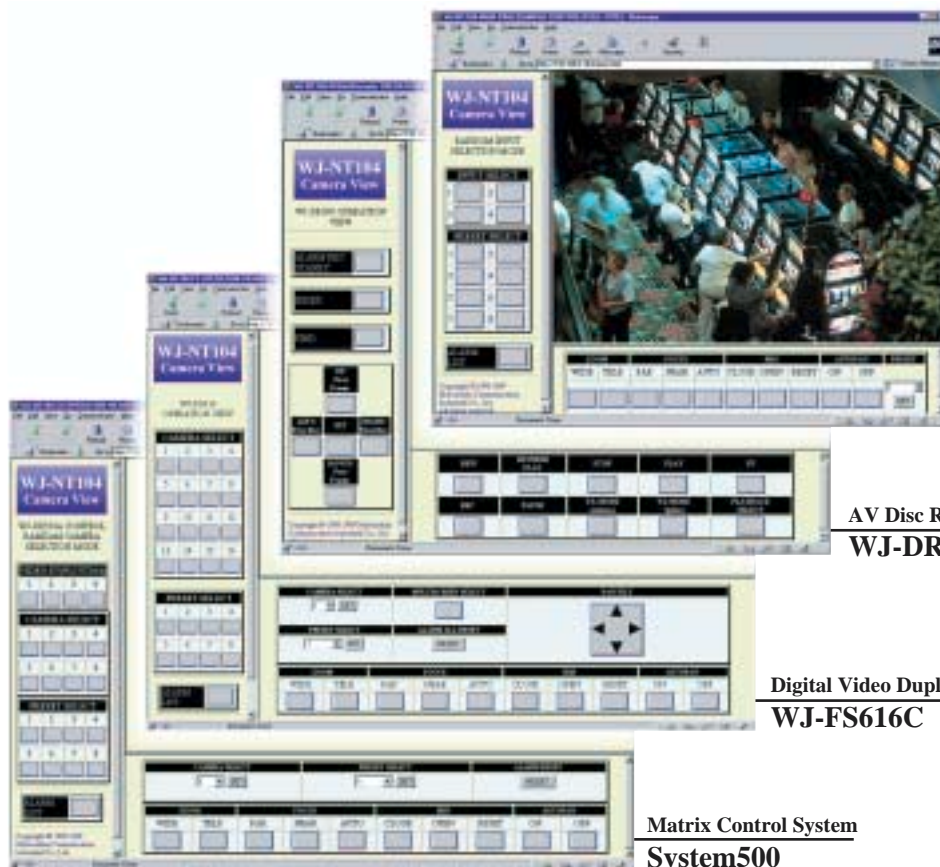
Automatic image switching by : SEQUENCE MODE

This mode sends the same, automatically switched camera images to all users. The switching interval can be specified at the settings screen.



Easy monitoring with a conventional browser

Use of TCP/IP protocols enables easy monitoring from a regular PC* browser. *Personal Computer with Microsoft® Windows for operation installed



Main Page

Operating screen can be customized
The WJ-NT104 incorporates a built-in homepage. This can be replaced with the user's own homepage as required. *Customization is optional.

Simple on-screen settings
The SYSTEM SETUP, NETWORK, ALARM, SERIAL PORT, MODEM, USER, HOST, DATE/TIME, and CAMERA MENU settings can all be configured on the screen.

AV Disc Recorder
WJ-DR200

Digital Video Duplex Multiplexer
WJ-FS616C

Matrix Control System
System500

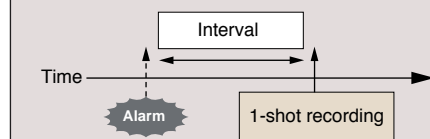
Wide variety of page menus to suit the Panasonic surveillance equipment.

Built-in alarm functions enable reliable monitoring

Capture critical moments without fail <Alarm recording function>
The following alarm recording functions can be selected as required.

1 Record one frame after receiving alarm 1-shot recording

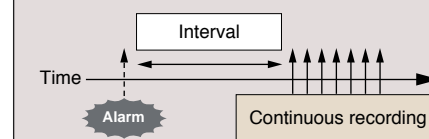
For car number identification in parking lots, or personnel identification at cash dispensers, strong-rooms, or laboratory ID check entrances.



* The interval can be set between 0 and 10 seconds, in 100mm increments.

2 Record images continuously after receiving alarm Continuous recording [after]

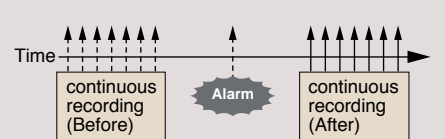
Useful for confirming personnel activity at reception counters or in shopping areas, and for similar applications.



* The interval can be set between 0 and 10 seconds, in 100mm units.

3 Record images continuously before and after receiving alarm Continuous recording [before/after]

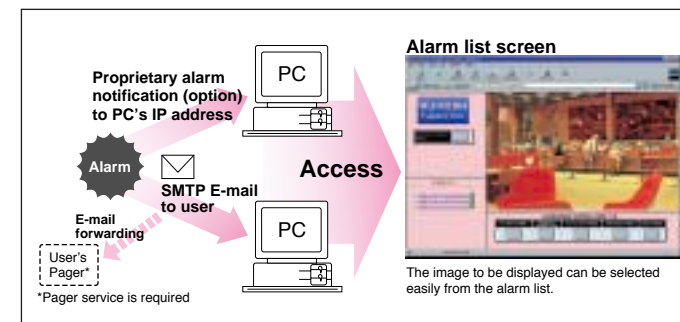
Records prior to an alarm occurring - useful in locations where continuous recording of an event in progress is required.



* Can only be used in "Fixed input selection mode".

Detect important scenes efficiently <Alarm notification function>

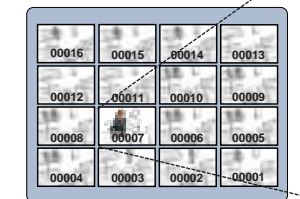
Alarm notification can be sent to PC's destination IP address and/or the user's E-mail address. Up to 16 destinations can be registered.



Improved recording features by connecting with WJ-DR200

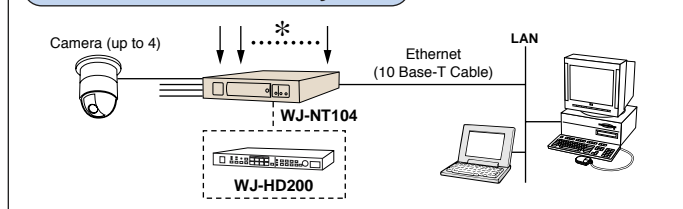
Connecting to the WJ-DR200 (available separately), which uses DVD-RAM, greatly increases the recording and image-search features available, further improving the monitoring system.

Thumbnail search example
Displays 8 or 16 recorded images altogether on a single screen, allowing easy selection of the images to be viewed.

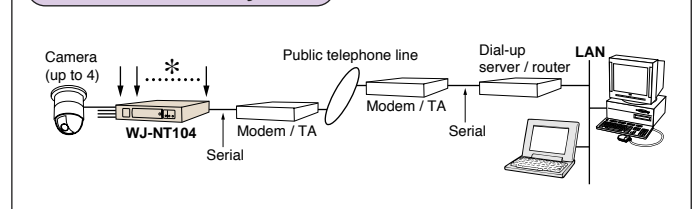


SYSTEM EXAMPLES

LAN / WAN connection system



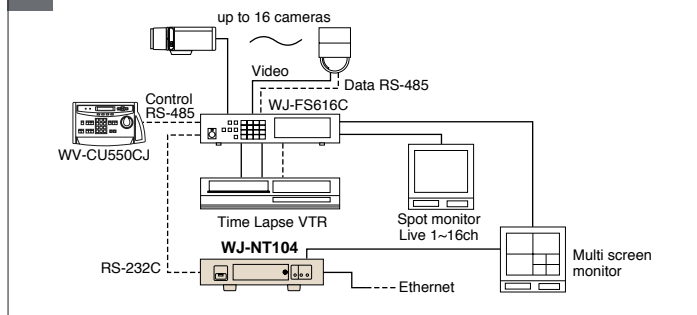
PPP connection system



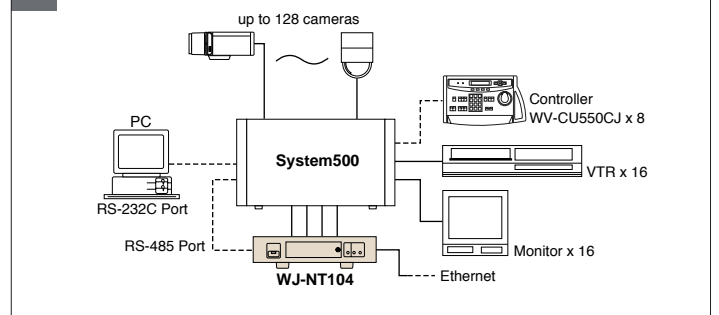
* Up to 8 alarm input connections or up to 4 alarm inputs outputs

TYPICAL SYSTEM CONFIGURATIONS

1 Panasonic Multiplexer WJ-FS616C



2 Panasonic System 500



MAJOR OPERATING CONTROLS

Front View



1. Operate indicator
2. Reset switch
3. RS-232C port
4. Mode selector
5. Link indicator
6. Receiving indicator
7. Transmitting indicator

Rear View



8. Video input connectors
9. RS-485 connectors
10. RS-485 setup switches
11. Parallel (alarm) control port
12. Video output connectors
13. RS-232C port
14. Ethernet port
15. DC power connector

SPECIFICATIONS PAL

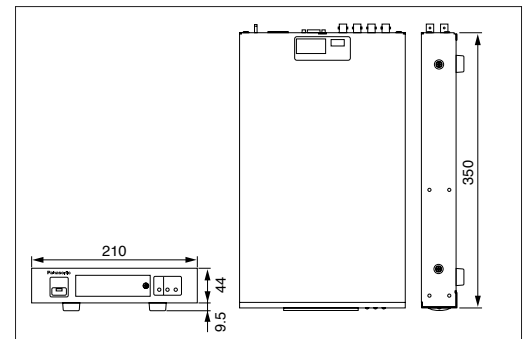
General	
Power Source	12 V DC, 0.8 A
Ambient Operating Temperature	-10°C - +50°C
Ambient Operating Humidity	Less than 90%
Dimensions (W x H x D)	210 x 44 x 350 mm
Weight	2.3 kg
Input and Output	
Video Input	1.0 V[p-p]/ 75Ω PAL Composite Video Signal (x4)
Video Output	1.0 V[p-p]/ 75Ω PAL Composite Video Signal (x4)
Serial Control Port	RS-232C (9-pin D-sub Connector), RS-485 (Terminal)
Parallel (Alarm) Control Port	Default 8-bit input (I/O selectable for all bits depending on the configuration)
Image Resolution	768 (H) x 576 (V); 768 (H) x 288 (V); 384 (H) x 288 (V); 192 (H) x 144 (V)
Image Compression	JPEG (image quality selectable by 4 modes)
Installed protocol	HTTP, TCP/IP, PPP, FTP, SMTP
Camera Coaxial Control	Pan/tilt, Zoom, Focus, Preset, Auto Focus (for Panasonic Dome Camera Series)
LAN Interface	10 Base-T Connector
Security measures	Password type
AC Adapter	220 ~ 240 V AC, 50 Hz

Trademarks

- MS-DOS is a registered trademark of Microsoft Corporation in the U.S.A and other countries.
- Windows and Windows NT are trademarks of Microsoft Corporation in the U.S.A and other countries.
- Netscape Navigator is a trademark of Netscape Communications Corporation.
- Adobe Acrobat Reader is a trademark of Adobe Systems Incorporated.
- Other company names and product names appearing in the manual are registered trademarks or trademarks of the companies concerned.

DIMENSIONS

Unit:mm



OPTIONAL ACCESSORIES

19-type Mounting Brackets

WV-Q204/1

(for mounting one WJ-NT104)

WV-Q204/2

(for mounting two WJ-NT104)

Upgrade Software

WJ-SNT104

(upgrade software kit to Ver.3.0)

• All TV pictures are simulated. • Weights and dimensions are approximate. • Specifications are subject to change without notice. • These products may be subject to export control regulations.

DISTRIBUTED BY:

System Solutions Company
Matsushita Communication Industrial Co.,Ltd.
 4-3-1, Tsunashima-higashi, Kohoku-ku, Yokohama,
 223-8639, Japan
 Tel 81(0)45-540-5769
 Fax 81(0)45-540-5773
 URL
<http://www.mci.panasonic.co.jp/english/prdct/cctv/index.html>

Panasonic

Panasonic is the brandname of Matsushita Electric.
 Printed in Japan
 WJ-JKNT104C[2N-648D]